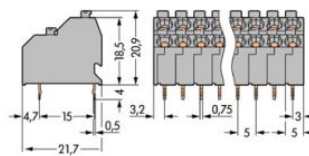
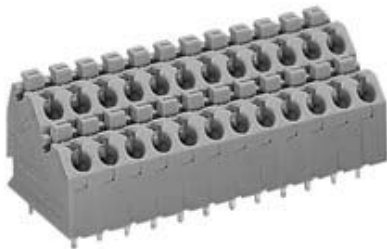


Item no.: 250-702  
 Product description: Double-deck PCB terminal strip 2 solder pins/pole, in line 2x2-pole Pin spacing 5 mm / 0.197 in with push-button with test port for 2.3 mm Ø test pin



Produkt kann von Bild abweichen / product may differ

Packing unit 264 4\*66 pieces

RoHS compliant

Weight	4.03 g
Color	grey
No. of connection Points	4
No. of potentials	4
pole count	2
Height	20.9 mm
Height	0.823 in
Width	11.2 mm
Width	0.441 in
Depth	21.7 mm
Depth	0.854 in
Pin spacing from	5 mm
Pin spacing from	0.197 in
Rating based on	IEC/EN 60664-1
Overvoltage category EN I	III
Pollution degree	2
Measured voltage EN	320 V
Measured shock voltage	4 kV

Current intensity EN	10 A
Overvoltage category EN II	II
Pollution degree	2
Measured voltage EN	630 V



Measured shock voltage	4 kV
Current intensity EN	10 A
Overvoltage category EN III	III
Degree of pollution	3
Rated voltage EN	320 V
Rated surge voltage	4 kV
Nominal current	10 A
Cross section [mm <sup>2</sup> ]	0.5 - 1.5 mm <sup>2</sup>
Wiring method	solid
Cross section [mm <sup>2</sup> ]	0.75 - 1.5 mm <sup>2</sup>
Wiring method	fine-stranded
Cross section [mm <sup>2</sup> ]	0.5 - 1 mm <sup>2</sup>
Wiring method	fine-stranded (with ferrule and plastic collar)
Cross section [mm <sup>2</sup> ]	0.5 - 1 mm <sup>2</sup>
Wiring method	fine-stranded (with ferrule, without plastic collar)
Cross section [AWG]	20 - 14 AWG
Strip length from	9 mm
Strip length to	10 mm
Strip length from [inch]	0.35 in
Strip length up to [inch]	0.39 in
Conductor entry angle to the PCB (degrees)	45 °
Solder pin length [mm]	4 mm



Solder pin width A [mm]	0.5 mm
Solder pin width B [mm]	0.75 mm
Diameter of drilled hole [mm]	1.2 mm
Tolerance of drilled hole diameter [mm]	0.1 mm
Material group	I
Insulating material	PA 6.6
Temperature stability	-60 °C to +105 °C
Flammability category, based on UL 94	V0
Clamping spring material	Nickel-chromium spring steel (CrNi)
Contact material	Electrolytic copper (Ecu)
Contact plating	tin-plated
xxx-xxx/000-006	blue
xxx-xxx/000-012	orange



Item number	Admission office	Approval no.	Voltage [V]	Current [A]	Cross section [ mm <sup>2</sup> ]
250-702	ABS	04-HG469925/1-PDA	450	10	0,5-1,5
250-702	CCA	NL6336	400	10	0,2-1,5
250-702	CSA	154112-1132097	300	10	22-14
250-702	GL	17296-00HH	450	10	0,5-1,5
250-702	KEMA	2114919.01	400	17,5	0,2-1,5
250-702	RMR	11130002	450	10	0,5-1,5
250-702	UR	E45172	300	10	22-14

Sorting criteria: admission office - approval number

© WAGO Kontakttechnik GmbH & Co. KG

Specifications are subject to changes and errors may be expected