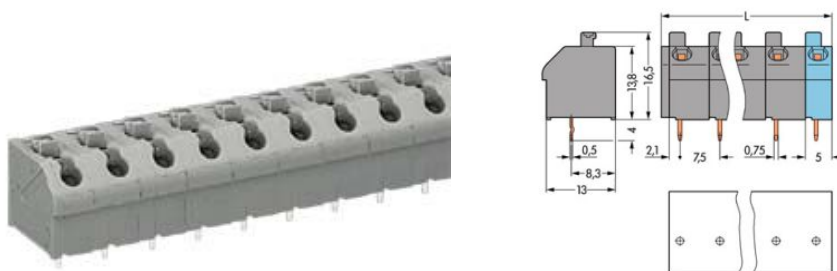


Item no.: 250-612
 Product description: 1-conductor PCB terminal strip 1 solder pin/pole, in line 12-pole
 Pin spacing 7.5 mm / 0.295 in with push-button with test port for test plug up to 2 mm Ø



Produkt kann von Bild abweichen / product may differ

Packing unit 40 4*10 pieces

RoHS compliant

Product group	4 (Printed Circuit)
Weight	14.789 g
Color	grey
No. of connection Points	12
No. of potentials	12
pole count	12
Height	16.5 mm
Height	0.65 in
Width	89 mm
Width	3.504 in
Depth	13 mm
Depth	0.512 in
Pin spacing from	7.5 mm
Pin spacing from	0.295 in
Rating based on	IEC/EN 60664-1
Overvoltage category EN I	III
Pollution degree	2
Measured voltage EN	630 V

Measured shock voltage	6 kV
Current intensity EN	17.5 A
Overvoltage category EN II	II
Pollution degree	2



Measured voltage EN	1000 V
Measured shock voltage	6 kV
Current intensity EN	17.5 A
Overvoltage category EN III	III
Degree of pollution	3
Rated voltage EN	500 V
Rated surge voltage	6 kV
Nominal current	17.5 A
Cross section [mm ²]	0.5 - 1.5 mm ²
Wiring method	solid
Cross section [mm ²]	0.75 - 1.5 mm ²
Wiring method	fine-stranded
Cross section [mm ²]	0.5 - 1 mm ²
Wiring method	fine-stranded (with ferrule and plastic collar)
Cross section [mm ²]	0.5 - 1 mm ²
Wiring method	fine-stranded (with ferrule, without plastic collar)
Cross section [AWG]	20 - 14 AWG
Strip length from	9 mm
Strip length to	10 mm
Strip length from [inch]	0.35 in
Strip length up to [inch]	0.39 in
Conductor entry angle to the PCB (degrees)	45 °



Solder pin length [mm]	4 mm
Solder pin width A [mm]	0.5 mm
Solder pin width B [mm]	0.75 mm
Diameter of drilled hole [mm]	1.2 mm
Tolerance of drilled hole diameter [mm]	0.1 mm
Material group	I
Insulating material	PA 6.6
Temperature stability	-60 °C to +105 °C
Flammability category, based on UL 94	V0
Clamping spring material	Nickel-chromium spring steel (CrNi)
Contact material	Electrolytic copper (Ecu)
Contact plating	tin-plated
xxx-xxx/000-002	yellow
xxx-xxx/000-005	red
xxx-xxx/000-006	blue
xxx-xxx/000-009	light gray
xxx-xxx/000-012	orange
xxx-xxx/000-014	brown
xxx-xxx/000-017	light green
xxx-xxx/000-050	white



Item number	Admission office	Approval no.	Voltage [V]	Current [A]	Cross section [mm ²]
250-612	CCA	NL6336	800	17,5	0,2-1,5
250-612	CSA	154112-1132097	300	10	26-14
250-612	KEMA	2114919.01	800	17,5	0,2-1,5
250-612	UR	E45172	300	2	20-16

Sorting criteria: admission office - approval number

© WAGO Kontakttechnik GmbH & Co. KG

Specifications are subject to changes and errors may be expected