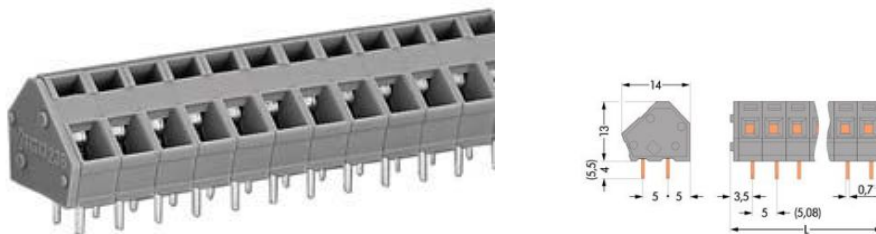


Item no.: 236-408
 Product description: PCB terminal strip 2 solder pins/pole 8-pole Pin spacing 5/5.08 mm / 0.2 in



Produkt kann von Bild abweichen / product may differ

Packing unit 100 4*25 pieces

RoHS compliant

Product group	4 (Printed Circuit)
Weight	7 g
Color	grey
No. of connection Points	8
No. of potentials	8
pole count	8
Height	13 mm
Height	0.512 in
Width	42.3 mm
Width	1.665 in
Depth	14 mm
Depth	0.551 in
Pin spacing from	5 mm
Pin spacing up to	5.08 mm
Pin spacing from	0.197 in
Pin spacing up to	0.2 in
Rating based on	IEC/EN 60664-1
Overvoltage category EN I	III
Pollution degree	2

Measured voltage EN	320 V
Measured shock voltage	4 kV
Current intensity EN	24 A



Overvoltage category EN II	II
Pollution degree	2
Measured voltage EN	630 V
Measured shock voltage	4 kV
Current intensity EN	24 A
Overvoltage category EN III	III
Degree of pollution	3
Rated voltage EN	250 V
Rated surge voltage	4 kV
Nominal current	24 A
Connection method	CAGE CLAMP®CONNECTION
Cross section [mm²]	0.08 - 2.5 mm²
Wiring method	solid
Cross section [mm²]	0.08 - 2.5 mm²
Wiring method	fine-stranded
Cross section [mm²]	0.25 - 1.5 mm²
Wiring method	fine-stranded (with ferrule and plastic collar)
Cross section [mm²]	0.25 - 1.5 mm²
Wiring method	fine-stranded (with ferrule, without plastic collar)
Cross section [AWG]	28 - 12 AWG
Strip length from	5 mm
Strip length to	6 mm



Strip length from [inch]	0.2 in
Strip length up to [inch]	0.24 in
Conductor entry angle to the PCB (degrees)	45 °
Solder pin length [mm]	4 mm
Solder pin width A [mm]	0.7 mm
Solder pin width B [mm]	0.7 mm
Diameter of drilled hole [mm]	1.1 mm
Tolerance of drilled hole diameter [mm]	0.1 mm
Material group	I
Insulating material	PA 6.6
Temperature stability	-60 °C to +105 °C
Flammability category, based on UL 94	0V
Clamping spring material	Nickel-chromium spring steel (CrNi)
Contact material	Electrolytic copper (Ecu)
Contact plating	tin-plated
xxx-xxx/000-004	black
xxx-xxx/000-006	blue
xxx-xxx/000-008	dark gray
xxx-xxx/000-009	light gray
xxx-xxx/000-012	orange
xxx-xxx/000-017	light green
xxx-xxx/000-023	green
xxx-xxx/332-xxx	with 2 solder pins/pole and 5,5 mm long solder pins
xxx-xxx/334-000	with 2 solder pins/pole and 3,6 mm long solder pins



Item number	Admission office	Approval no.	Voltage [V]	Current [A]	Cross section [mm ²]
236-408	BV	11915/BO	500/250	16	0,08-2,5
236-408	CCA	NL6247	250	24	0,08-2,5
236-408	CSA	154112-1673957	300	15	28-12
236-408	DNV	E-9215	250	16	0,5-2,5
236-408	GL	17296-00HH	500/250	16	0,5-2,5
236-408	KEMA	2110204.01	250	24	0,08-2,5
236-408	RMR	11130002	250	16	0,5-2,5
236-408	UR	E45171	600	10	12
236-408	UR	E45172	300	10	28-12

Sorting criteria: admission office - approval number

© WAGO Kontakttechnik GmbH & Co. KG

Specifications are subject to changes and errors may be expected