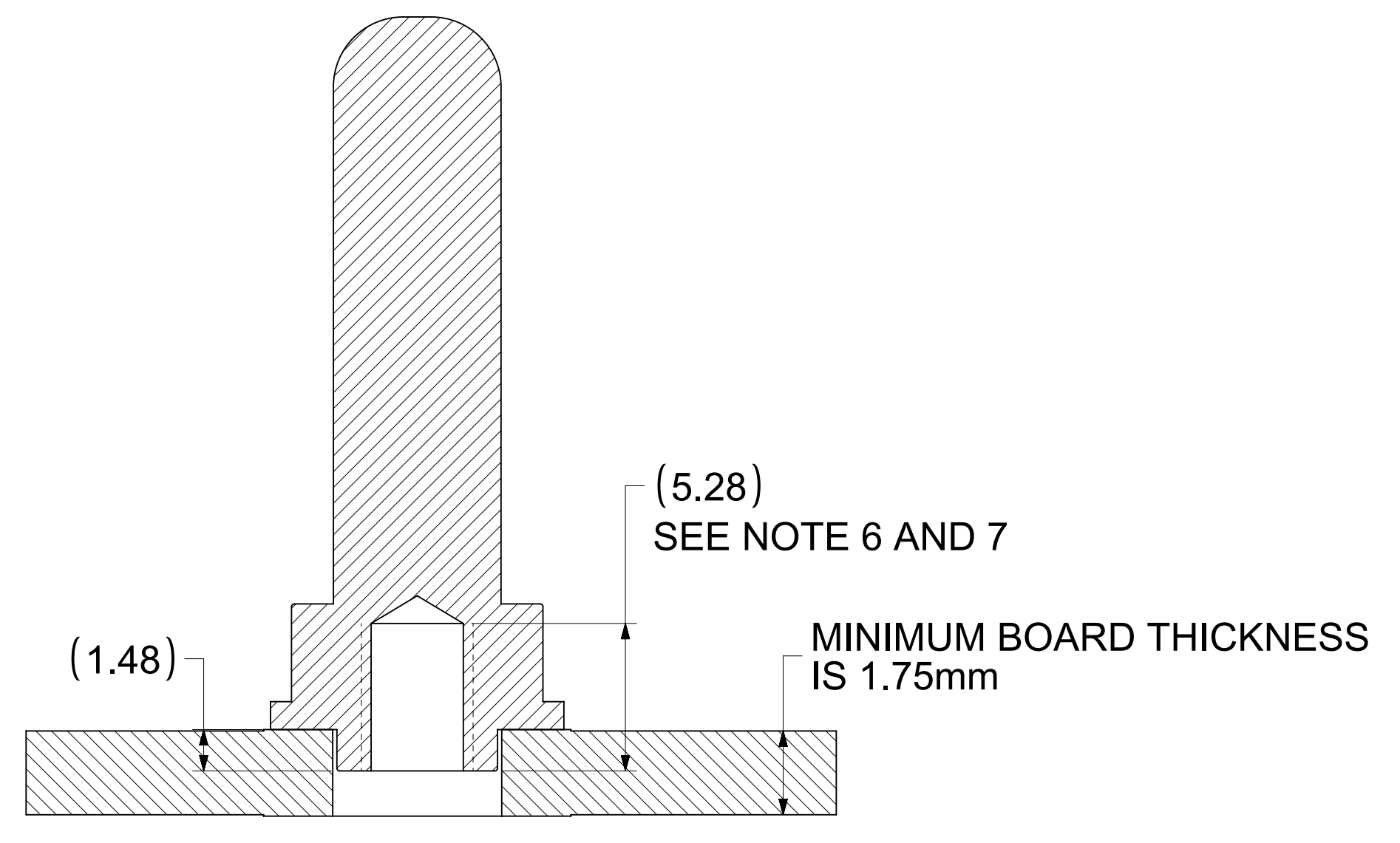
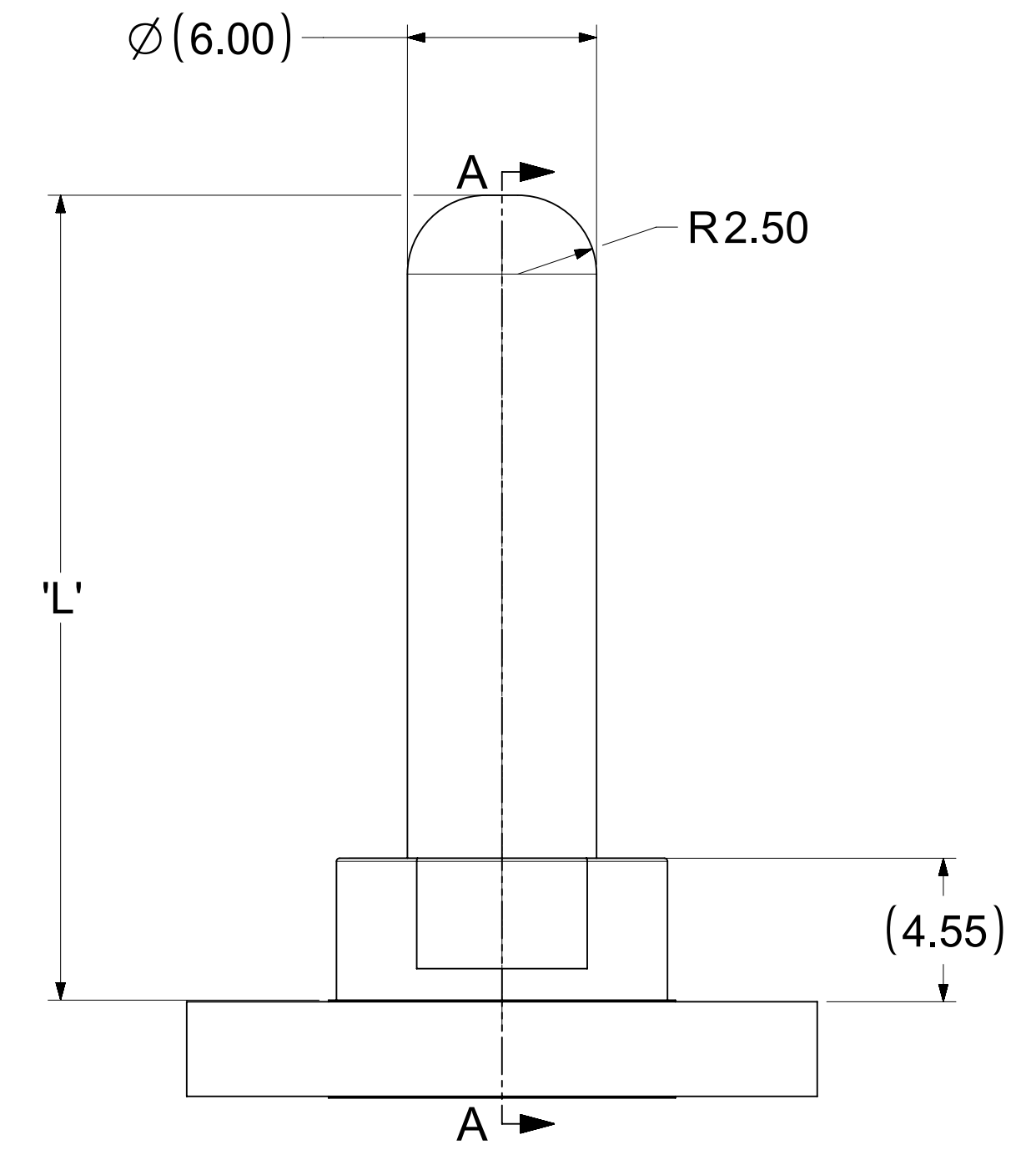
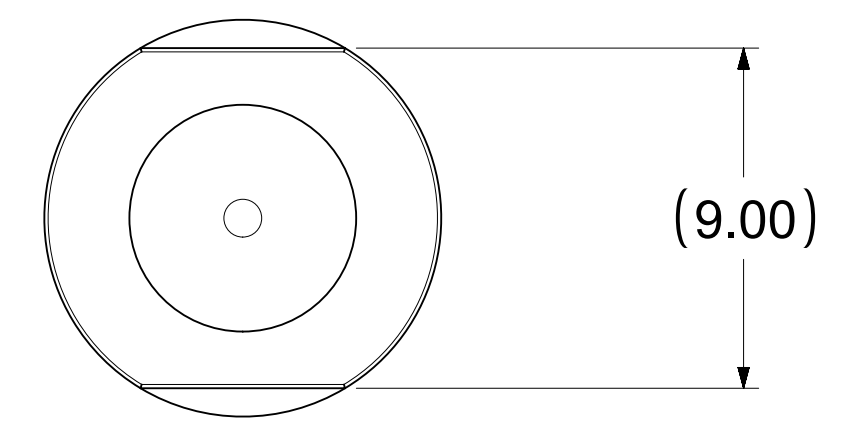
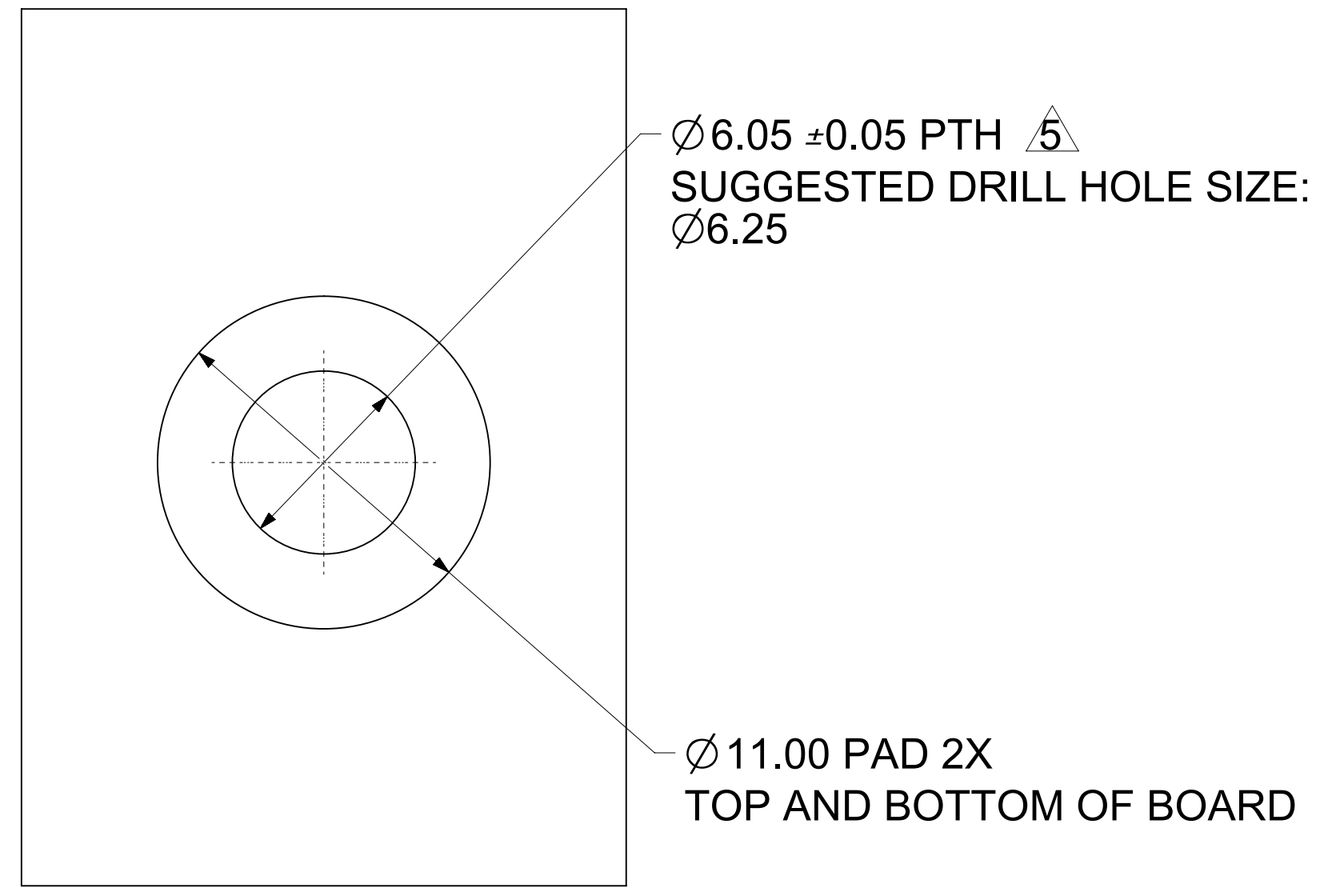


PART NUMBER	DIMENSION "L"
2032636085	18.50
2032636185	25.50
2032636285	20.90
2032636385	30.90
2032636485	27.40
2032636585	23.75
2032636685	40.0



SECTION A-A



RECOMMENDED PCB LAYOUT

NOTES:

1. MATERIALS:
BASE METAL: HIGH CONDUCTIVE COPPER ALLOY
PLATING ON BODY: 3.18 MICRON MIN SILVER OVER 1.27 MICRON MIN NICKEL
2. PRODUCT SPECIFICATION: 2043130006-PS
3. APPLICATION SPECIFICATION: 2043130006-AS
4. PACKAGING SPECIFICATION: 2032630006-PK
5. SILVER COMPONENTS WILL BE SUPPLIED TARNISH FREE BUT MAY TARNISH OVER TIME.
6. PART MOUNTED WITH CONDUCTIVE M4 SCREW AND CONDUCTIVE BELLVILLE WASHER FOR OPTIMAL PERFORMANCE
7. SCREW LENGTH TO BE DETERMINED BY CUSTOMER, SCREWS AND WASHERS ARE NOT SUPPLIED BY MOLEX.

THIS DRAWING CONTAINS INFORMATION THAT IS PROPRIETARY TO MOLEX ELECTRONIC TECHNOLOGIES, LLC AND SHOULD NOT BE USED WITHOUT WRITTEN PERMISSION											
DIMENSION UNITS	SCALE	CURRENT REV DESC: PLATING SPEC				molex					
mm	5:1	UPDATED									
GENERAL TOLERANCES (UNLESS SPECIFIED)		EC NO: 620915				6MM CST SCREW MOUNTED MALE TERMINAL					
ANGULAR TOL	± 0.5°	DRWN: RLOW		2019/07/26		PRODUCT CUSTOMER DRAWING					
4 PLACES	±	CHK'D: BPISZCZOR		2019/07/30		DOCUMENT NUMBER					
3 PLACES	±	APPR: BPISZCZOR		2019/07/30		DOC TYPE					
2 PLACES	± 0.15	INITIAL REVISION:				DOC PART					
1 PLACE	± 0.25	DRWN: JJONIAK		2018/10/10		REVISION					
0 PLACES	±	APPR: BPISZCZOR		2019/03/22		2032636185-SD					
DRAFT WHERE APPLICABLE MUST REMAIN WITHIN DIMENSIONS		THIRD ANGLE PROJECTION		DRAWING		SERIES		MATERIAL NUMBER		CUSTOMER	
		D-SIZE		203263		SEE CHART		GENERAL MARKET		SHEET NUMBER	
										1 OF 1	