



FPC

TE Internal #: 2-84953-5

FPC Connectors, Flex-to-Board, 25 Position, .039 in [1 mm]

Centerline, Zero Insertion Force (ZIF), Right Angle, Surface Mount

[View on TE.com >](#)

Connectors > PCB Connectors > Wire-to-Board Connectors > FFC, FPC & Ribbon Connectors > FPC Connectors



Connector System: **Flex-to-Board**

Number of Positions: **25**

Centerline (Pitch): **1 mm [.039 in]**

Insertion Force Type: **Zero Insertion Force (ZIF)**

PCB Mount Orientation: **Right Angle**

Features

Product Type Features

| | |
|-----------------------------------|--------------------------------|
| PCB Connector Assembly Type | PCB Mount Receptacle |
| Connector Product Type | Connector Assembly |
| Connector System | Flex-to-Board |
| Insertion Force Type | Zero Insertion Force (ZIF) |
| FPC Actuator Type | Stuffer (Plunger Style) |
| Sealable | No |
| Connector & Contact Terminates To | Flexible Printed Circuit (FPC) |

Configuration Features

| | |
|-----------------------------------|-------------|
| Compatible With Wire & Cable Type | FFC, FPC |
| Number of Rows | 1 |
| Number of Positions | 25 |
| PCB Mount Orientation | Right Angle |

Electrical Characteristics

| | |
|-------------------|---------|
| Operating Voltage | 200 VAC |
|-------------------|---------|

Contact Features

| | |
|---|--------------|
| Contact Layout | Inline |
| PCB Contact Termination Area Plating Material Thickness | 2 μm, 3.8 μm |
| Contact Type | Socket |
| Contact Mating Area Plating Material Thickness | 2 μm, 3.8 μm |



| | |
|--|-----------------|
| PCB Contact Termination Area Plating Material Finish | Bright |
| Contact Shape & Form | Single Beam |
| Contact Mating Area Plating Material Finish | Bright |
| PCB Contact Termination Area Plating Material | Tin |
| Contact Base Material | Phosphor Bronze |
| Contact Mating Location | Top |
| Contact Mating Area Plating Material | Tin |
| Contact Current Rating (Max) | 1 A |

Termination Features

| | |
|---|---------------|
| Termination Method to Printed Circuit Board | Surface Mount |
|---|---------------|

Mechanical Attachment

| | |
|-------------------------|-------------|
| Mating Alignment | With |
| PCB Mount Alignment | Without |
| PCB Mount Retention | With |
| Connector Mounting Type | Board Mount |

Housing Features

| | |
|--------------------|------------------------------|
| Housing Material | LCP (Liquid Crystal Polymer) |
| Housing Color | Natural |
| Centerline (Pitch) | 1 mm [.039 in] |

Dimensions

| | |
|------------------------------|---------------------|
| Connector Length | 32.92 mm [1.296 in] |
| Connector Height | 2.56 mm [.101 in] |
| Connector Width | 6.54 mm [.258 in] |
| Accepts Flex Cable Thickness | .3 mm [.012 in] |

Usage Conditions

| | |
|-----------------------------|----------------------------|
| Operating Temperature Range | -40 – 85 °C [-40 – 185 °F] |
|-----------------------------|----------------------------|

Operation/Application

| | |
|---------------------|--------|
| Circuit Application | Signal |
|---------------------|--------|

Identification Marking

| | |
|--------------------------------|------|
| Circuit Identification Feature | With |
|--------------------------------|------|

Packaging Features

| | |
|--|--|
| | |
|--|--|



| | |
|--------------------|-------------|
| Packaging Quantity | 1200 |
| Packaging Method | Tape & Reel |

Product Compliance

[For compliance documentation, visit the product page on TE.com>](#)

| | |
|---|---|
| EU RoHS Directive 2011/65/EU | Compliant |
| EU ELV Directive 2000/53/EC | Compliant |
| China RoHS 2 Directive MIIT Order No 32, 2016 | No Restricted Materials Above Threshold |
| EU REACH Regulation (EC) No. 1907/2006 | Current ECHA Candidate List: JAN 2022 (223) Candidate List Declared Against: JUN 2020 (209) SVHC > Threshold: Not Yet Reviewed |
| Halogen Content | Not Low Halogen - contains Br or Cl > 900 ppm. |
| Solder Process Capability | Reflow solder capable to 260°C |

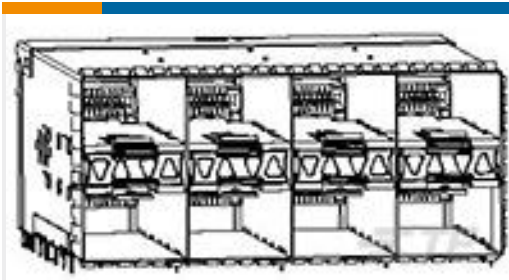
Product Compliance Disclaimer

This information is provided based on reasonable inquiry of our suppliers and represents our current actual knowledge based on the information they provided. This information is subject to change. The part numbers that TE has identified as EU RoHS compliant have a maximum concentration of 0.1% by weight in homogenous materials for lead, hexavalent chromium, mercury, PBB, PBDE, DBP, BBP, DEHP, DIBP, and 0.01% for cadmium, or qualify for an exemption to these limits as defined in the Annexes of Directive 2011/65/EU (RoHS2). Finished electrical and electronic equipment products will be CE marked as required by Directive 2011/65/EU. Components may not be CE marked. Additionally, the part numbers that TE has identified as EU ELV compliant have a maximum concentration of 0.1% by weight in homogenous materials for lead, hexavalent chromium, and mercury, and 0.01% for cadmium, or qualify for an exemption to these limits as defined in the Annexes of Directive 2000/53/EC (ELV). Regarding the REACH Regulation, the information TE provides on SVHC in articles for this part number is based on the latest European Chemicals Agency (ECHA) 'Guidance on requirements for substances in articles' posted at this URL: <https://echa.europa.eu/guidance-documents/guidance-on-reach>

Compatible Parts



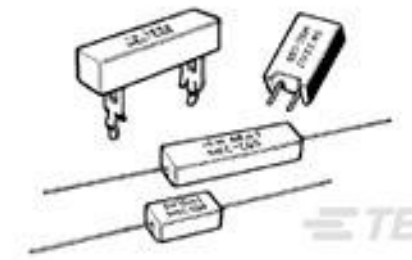
Customers Also Bought



TE Part #2180324-6
zSFP+ STACKED 2X4 RECEPTACLE
ASSEMBLY



TE Part #2176053-4
RLP73M 2A R068 1% 1K RL



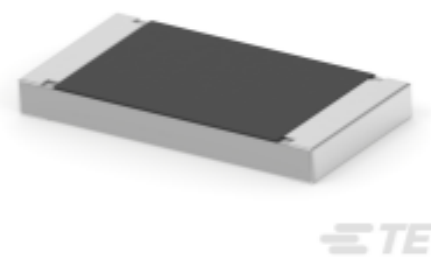
TE Part #1-1623807-9
SQZ5 22R 10% WIRE



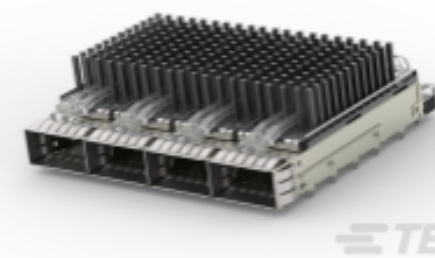
TE Part #1676349-3
RN 0805 47K5 0.1% 10PPM 5KRL



TE Part #2842144-5
10P,2MM,BRK HDR,DRVT,SMD,0.76
AU,TR W/CAP



TE Part #2-2176350-9
CRGCQ 2512 47K 5%



TE Part #2-2170747-3
CAGE ASSY, 1X4, QSF28, SPRING,
HS, LP



TE Part #6-103166-0
24 MODII HDR DRRA SHRD LF



TE Part #1744017-2
02P MTA156 HDR ASSY FL/RET LEG

Documents

Product Drawings

[1MM FPC HORZ.TOP CONT.ASSY 25P](#)

English

CAD Files

[3D PDF](#)

3D

Customer View Model

[ENG_CVM_CVM_2-84953-5_A.2d_dxf.zip](#)

English

Customer View Model

[ENG_CVM_CVM_2-84953-5_A.3d_igs.zip](#)

English

Customer View Model

[ENG_CVM_CVM_2-84953-5_A.3d_stp.zip](#)

English

By downloading the CAD file I accept and agree to the [Terms and Conditions](#) of use.

Datasheets & Catalog Pages



[1-1773959-6-flexible-printed-circuit-con](#)

English

[1-1773959-7-FPC-Connectors-CN](#)

[FPC Connector Family](#)

English

[5-1773461-0_Standard_FPC_Connector_Quick_Reference_Guide](#)

English

Product Specifications

[Product Specification](#)

English

Product Environmental Compliance

[TE Material Declaration](#)

English

Agency Approvals

[UL Report](#)

English