

# ERSA MICRO-CON 60 iA

**REVOLUTIONARY**



Tech tool

130 W heat up rating

## The Intelligent Champion - with Microprocessor Control and PC link

**Multifunctionality and intelligence** are two of the many highlights of our top-of-the-range **ERSA MICRO-CON 60 iA** soldering station. This microprocessor-controlled and fully antistatic soldering station combines **leading-edge technology** and yet has minimal space requirements.

The **ERSA-SENSOTRONIC** micro-processor-control with Fuzzy-Logic "intelligence" provides amazing tip heat-up times (8-12 sec.) and repeatable solder joint quality even at production temperatures (235-250°C/455-482°F).

The ERSA MICRO-CON 60 iA has **automatic identification of four connectable soldering and desoldering tools**, and adjusts the power regulation accordingly:

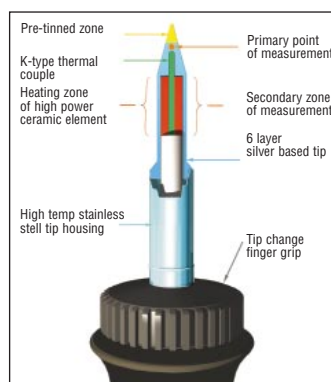
- **Tech tool** (included) for reproducible solder joint quality at production temperatures; (235-250°C/455-482°F)
- **Micro tool**, ultra-light 24g (1oz) for miniature and Fine-pitch soldering
- **Power tool**, 290 watt heat up power, for extreme high-mass and multi-layer applications
- **Pincette 40** conductive tweezer for rapid and safe removal of all SMDs

The extensive soldering iron tip range includes, among others, the super fine 0.2 mm (0.008") pencil tip, the 17 mm (0.669") thermal power tip, and the ERSA Micro Wave, ERSA Tech Wave and ERSA Power Wave tips for **rapid installations of ultra Fine-pitch (TAB) components at production temperatures**. Our continuously expanding range of SMD desoldering tips are **long-life, low cost**, have **rapid heat up times** and can remove everything from MINI-MELF's to large size PLCC's and PQFP's.

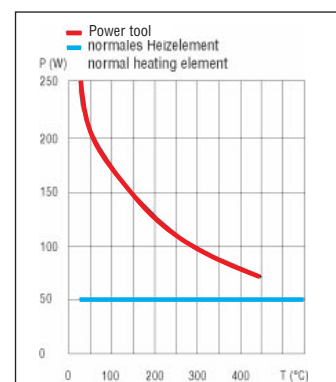
The **revolutionary ERSA Auto RTC (Automatic Room Temperature Compensation)** continuously monitors and compensates for

ambient temperature changes, ensuring maximum tip temperature accuracy regardless of the working environment.

The **multi-level, user-friendly menu** provides: **8 presettable temperatures for rapid application changes, adjustable thermal power settings (for zero overshoot/maximum power balancing), auto tip offset compensation, heating element recovery status, push button calibration, 4-digit password lockout, 0 to 60 minute stand-by, pre-set temperature windows for increased safety and soldering robot applications, user/unit address, and auto error alarm functions.**



Structure of the Tech tool with ERSA DUR-silver based tip



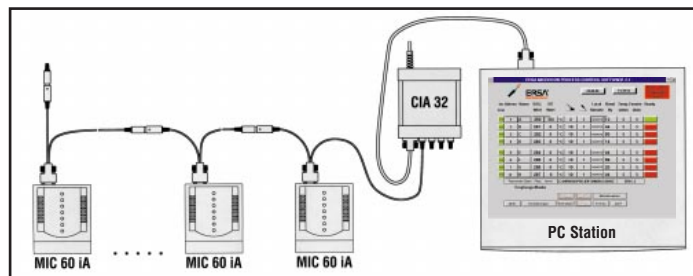
Performance curve with the PTC heating element

Last but not least, the multifunctional holder for both left and right handed users not only acts as a hot tip holder, but also is fully equipped to accept tools with fume extraction systems.

### Optional ERSA MICRO-CON Process Control Software

On-line, real-time process command and control software with interactive communication monitors and documents for ISO 9000 real-time temperature profiles of up to 32 stations. **Supervisor can set, display, and change working temperature from a remote PC with a simple click of the mouse!**

PC networking model with the ERSA CIA 32



Soldering with the ERSA Tech Wave tip



#### Technical data:

**Electronic station MIC 603 IA**  
 Primary voltage: 230 /115V~, 50-60 Hz  
 Secondary Voltage: 24 V~  
 Rating: 80 W  
 Control technique: SENSOTRONIC with Fuzzy-Logic  
 Temperature range:  
 stepless 50°C (120°F) - 450°C (840°F)  
 Function display: 7-digit LCD display with menu control  
 Interface: RS 232 serial with current loop  
 Cable: 2 m (6.6 ft) PVC with connector  
 Model: safety insulated, antistatic according to MIL-SPEC/ESA standards

#### Soldering iron Tech tool

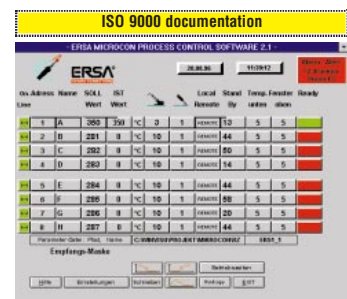
Voltage: 24 V~  
 Rating: 70 W / 280°C (545°F)  
 - 60 W / 350°C (660°F)  
 Heat up rating: 130 W  
 Heat up time: appr. 12 s (to 280°C/545°F)  
 Weight (without cable): appr. 50 g (2 oz)  
 Cable: 1,5 m (4.9 ft) highly flexible/heat resistant, antistatic  
 Model: antistatic according to MIL-SPEC/ESA standards

Solder station down-time/busy time is continuously documented for increased productivity control.

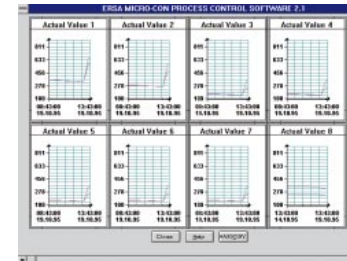
**As an invaluable training aid, the temperature profile process visualization of a hand soldering operation can be printed out at any time.**

Student and trainer can discuss and correct deficiencies by relating soldering technique to an ideal profile!

**Exceeds ISO 9000: exact temperature control at the solder joint**



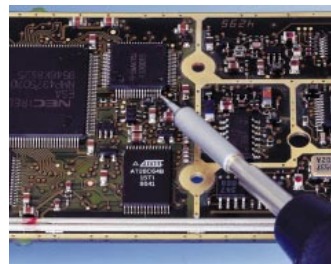
Process visualization with the PC software



#### Hardware and software requirements

IBM-compatible computer, processor 80486 or better, with 8 MB RAM.  
 >500 MB hard disk recommended.  
 VGA graphics format 640 x 480.  
 Running Windows 3.11 or better.  
 2 serial RS 232 interfaces are required.  
 1 x for connecting the mouse.  
 1 x for connecting the ERSA CIA 32 communication interface.  
 VGA monitor, MS-compatible mouse.

SMD soldering with the Micro tool



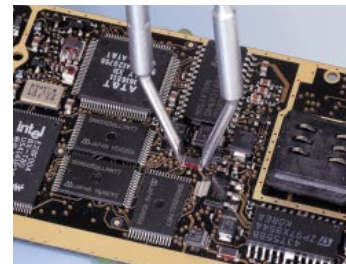
#### Order nos:

**MIC 60 IA** MICRO-CON 60 IA Soldering station with interface complete  
 consisting of:  
**MIC 603 IA** Electronic station  
**640 UDJ** Soldering iron Tech tool with soldering tip 612 UD Holder  
**A 29** Spare parts:  
**64100J** Spare heating element for Tech tool

#### Optional soldering and desoldering tools

**840 CDJ** Soldering iron Power tool (soldering tips for Power tool see page 11)  
**A 29** Holder for 830 CDJ  
**270 BDJ** SMD-soldering iron Micro tool (soldering tips for Micro tool see page 20)  
**A 29** Holder for 270 BDJ  
**430 EDJ** SMD-desoldering tweezers-Pincette 40 (desoldering inserts for Pincette 40 see page 21)  
**A 30** Holder for 430 EDJ

SMD desoldering with the Pincette 40



#### Accessories for PC connection

**CIA 32** ERSA adapter CIA 32 consisting of:  
 Connection cable serial interface, ERSA MICRO-CON Process Control Software, connection cable CIA/MICRO-CON and terminal plug  
**3CIA3260-00** Connection cable, 3 m (9.84 ft) long, to connect further MICRO-CON soldering stations

ERSA CIA 32



Micro tool / Pincette 40 (Option)

65 / 130 W heat up rating



Power tool (Option)

290 W heat up rating