

1825002-6 ✓ ACTIVE

[Alcoswitch](#) | [Alcoswitch DIP](#), [Alcoswitch DIP ADF](#)

TE Internal #: 1825002-6

Alcoswitch DIP, DIP & SIP Switches, Switch, Gold Flash, Black Housing, Polyphenylene Sulfide (PPS), Auto-Insertable, Sealed, 4 Switch, -30 – 85 °C

[View on TE.com >](#)



Relays, Contactors & Switches > Switches > DIP & SIP Switches



DIP & SIP Switch Product Type: **Switch**

DIP & SIP Switch Contact Mating Area Plating Material: **Gold Flash**

DIP & SIP Switch Housing Color: **Black**

DIP & SIP Switch Housing Material: **Polyphenylene Sulfide (PPS)**

Auto-Insertable: **Yes**

## Features

### Product Type Features

DIP & SIP Switch Product Type	Switch
Sealed DIP & SIP Switch	Yes
DIP & SIP Switch Type	DIP
Actuator Style	Flush, Slide

### Configuration Features

Number of Positions	4
Number of Switches	4
Configuration (Pole-Throw)	Single Pole - Single Throw

### Electrical Characteristics

DIP & SIP Switch Voltage Rating	5 VDC
---------------------------------	-------

### Body Features

Seal Type	Tape
Actuator Color	White

### Contact Features

Solder Tail Contact Plating	Gold over Nickel
	1.2 µin
DIP & SIP Switch Contact Mating Area Plating Material	Gold Flash
Auto-Insertable	Yes



DIP & SIP Switch Contact Current Rating	1 A
Contact Base Material	Copper Alloy

### Termination Features

Termination Post Length	4 mm[.157 in]
-------------------------	---------------

### Mechanical Attachment

Mounting Angle	Vertical
DIP & SIP Switch Mounting Type	Through Hole

### Housing Features

DIP & SIP Switch Housing Color	Black
DIP & SIP Switch Housing Material	Polyphenylene Sulfide (PPS)
DIP & SIP Switch Centerline	2.54 mm[.1 in]

### Dimensions

Height	4 mm[.138 in]
Length	12.14 mm[.477 in]

### Usage Conditions

Operating Temperature Range	-30 – 85 °C
-----------------------------	-------------

### Industry Standards

UL Flammability Rating	UL 94V-0
------------------------	----------

### Packaging Features

Packaging Method	Tube
Packaging Quantity	35

### Product Compliance

[For compliance documentation, visit the product page on TE.com>](#)

EU RoHS Directive 2011/65/EU	Compliant
EU ELV Directive 2000/53/EC	Compliant
China RoHS 2 Directive MIIT Order No 32, 2016	No Restricted Materials Above Threshold
EU REACH Regulation (EC) No. 1907/2006	Current ECHA Candidate List: JAN 2022 (223) Candidate List Declared Against: JAN 2021 (211) SVHC > Threshold: Not Yet Reviewed
Halogen Content	BFR/CFR/PVC Free, but Br/Cl >900 ppm in



other sources.

Solder Process Capability

Wave solder capable to 265°C

Product Compliance Disclaimer

This information is provided based on reasonable inquiry of our suppliers and represents our current actual knowledge based on the information they provided. This information is subject to change. The part numbers that TE has identified as EU RoHS compliant have a maximum concentration of 0.1% by weight in homogenous materials for lead, hexavalent chromium, mercury, PBB, PBDE, DBP, BBP, DEHP, DIBP, and 0.01% for cadmium, or qualify for an exemption to these limits as defined in the Annexes of Directive 2011/65/EU (RoHS2). Finished electrical and electronic equipment products will be CE marked as required by Directive 2011/65/EU. Components may not be CE marked. Additionally, the part numbers that TE has identified as EU ELV compliant have a maximum concentration of 0.1% by weight in homogenous materials for lead, hexavalent chromium, and mercury, and 0.01% for cadmium, or qualify for an exemption to these limits as defined in the Annexes of Directive 2000/53/EC (ELV). Regarding the REACH Regulation, the information TE provides on SVHC in articles for this part number is based on the latest European Chemicals Agency (ECHA) 'Guidance on requirements for substances in articles' posted at this URL: <https://echa.europa.eu/guidance-documents/guidance-on-reach>

### Compatible Parts



TE Part # 4-1825059-2  
ADF08STTR04=DIP S,FLUSH,SMT-GW



TE Part # 1-1825059-8  
ADF04STTR04=DIP S,FLUSH,SMT-GW



TE Part # 5-1825059-4  
ADF10STTR04=DIP S,FLUSH,SMT-GW

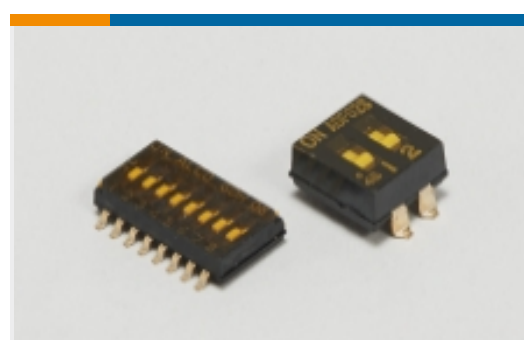


TE Part # 1-1825059-3  
ADF04S04=DIP SWT,FLUSH,SMT-GW




TE Part # 6-1825059-3  
ADF06STR04


### Also in the Series | Alcoswitch DIP



DIP & SIP Switches(291)

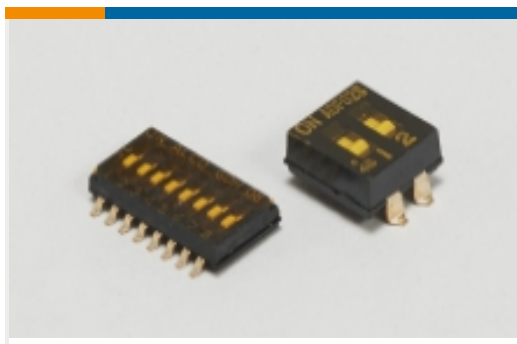


Rotary Switches(25)



Switch Seals & Accessories(1)

### Also in the Series | Alcoswitch DIP ADF

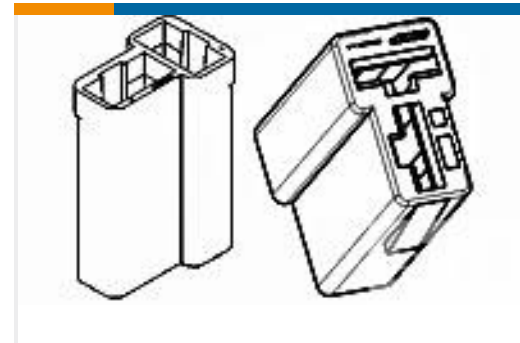


DIP &amp; SIP Switches(78)

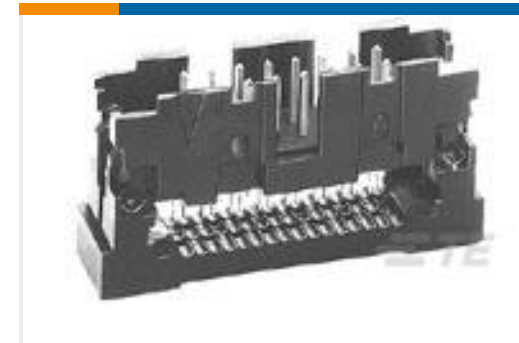
## Customers Also Bought



TE Part #1717254-1  
EMBOSS ASS'Y DDR SODIMM  
SOCKET



TE Part #180907  
FF 250 REC HSG 2P NYLON NAT



TE Part #1-111446-6  
16 UNIV I/O, NO EARS, LEAD FREE



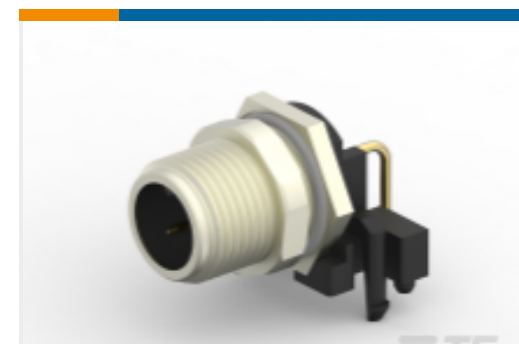
TE Part #1825006-3  
GDS02S04=DIP SW, SLIDE, SMT



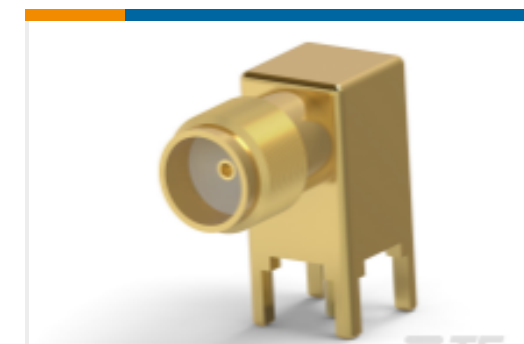
TE Part #1-1879502-6  
CRGH2512 5% 56K 2W



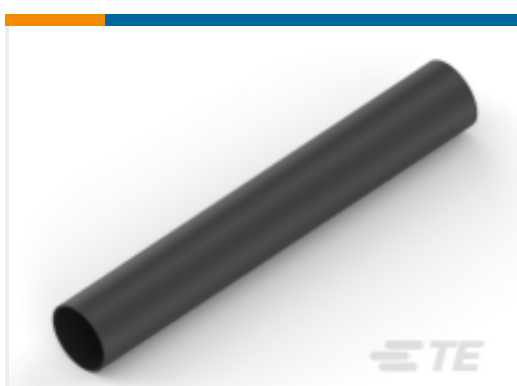
TE Part #1625971-2  
HSA25 100R 5%



TE Part #T4144015021-000  
M12 R/A M PNL REAR A-CODE 2P  
PCBSTD



TE Part #5-1814400-2  
SMA R/A PCB Skt GZD



TE Part #NB08994001  
ATUM-12/3-0-SP



TE Part #1106436-4  
HIPK10/24.STS.1M25G

## Documents

### Product Drawings

[ADF04T04=DIP SWT,FLUSH,THRU/HL](#)

English

### CAD Files

[3D PDF](#)

3D

[Customer View Model](#)

[ENG\\_CVM\\_CVM\\_1825002-6\\_A.2d\\_dxf.zip](#)



English

**Customer View Model**

[ENG\\_CVM\\_CVM\\_1825002-6\\_A.3d\\_igs.zip](#)

English

**Customer View Model**

[ENG\\_CVM\\_CVM\\_1825002-6\\_A.3d\\_stp.zip](#)

English

By downloading the CAD file I accept and agree to the [Terms and Conditions](#) of use.

---

**Datasheets & Catalog Pages**

[SWITCHES\\_CORE\\_PROGRAM\\_CATALOG](#)

English

---

**Product Environmental Compliance**

[TE Material Declaration](#)

English