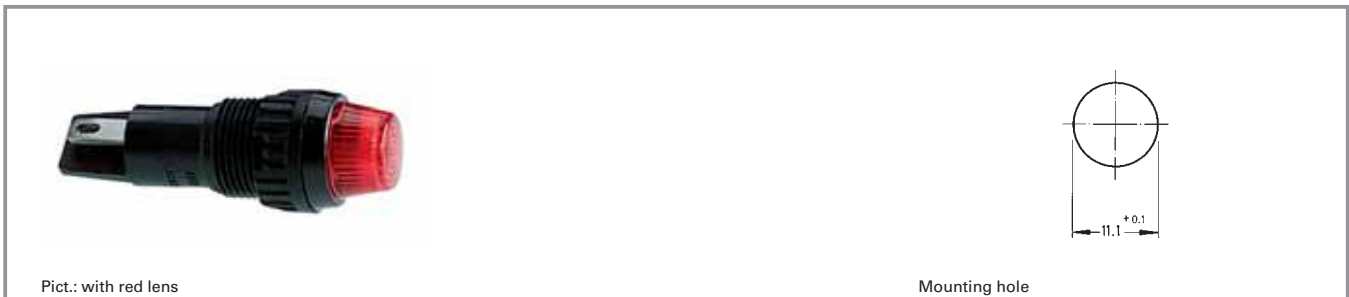


Signal lamps with lamp socket - W 2x4.6d, 11.1 mm



Technical Data

General information

Form of lens	round
Colour of lens	see order block
Diameter of collar	11

Electrical characteristics

Voltage limit max.	35 V
Power limit max.	1.2 W

Dimensions

Overall height	8.5 mm
Mounting depth	28.5 mm
Mounting hole	11.10 mm

Other specifications

Degree of protection from front side	IP40
Weight	1.4 g

Mechanical design

Mounting	ring nut
Terminals	quick connector A 2.8 x 0.5
Lamp socket	W 2 x 4.6 d
Lamp	filament lamp

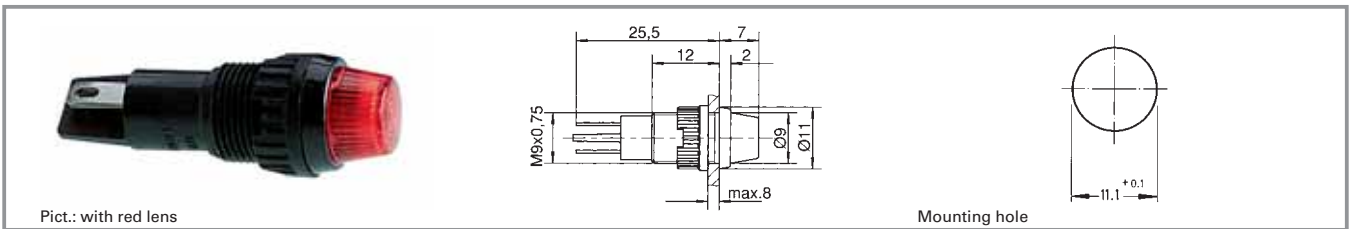
Typical accessories Signal lamps with lamp socket - W 2x4.6d, 11.1 mm

With
Socket

Description	Photo	Order no.	Additional accessories see page
Filament lamp, W 2 x 4.6d base, 24 - 30 V		1.90.120.005/0000	5 - 4
Filament lamp, W 2 x 4.6d base, 60 V		1.90.120.009/0000	5 - 4
Filament lamp, W 2 x 4.6d base, 48 V		1.90.120.010/0000	5 - 4
Filament lamp, W 2 x 4.6d base, 24 V		1.90.120.011/0000	5 - 4
Filament lamp, W 2 x 4.6d base, 12 V		1.90.120.012/0000	5 - 4
Protective sleeve made of Buna N (NBR), 8 x 30		5.52.011.023/0100	
Fixing spanner M 11, M 13		5.58.002.026/0105	5 - 21

Please include the desired lens in your order.

Signal lamps with lamp socket - W 2x4.6d, 11 mm, round lens



Voltage limit max.	Power limit max.	Lamp socket	Colour of lens	Order no. without lens	Note
35 V	1.2 W	W 2 x 4.6 d	-	1.66.003.091/0000	Please include the desired lens in your order.

Technical data see page 3 - 48

Lenses:

Lens transparent colourless: 5.49.255.003/1002

Lens transparent red: 5.49.255.003/1301

Lens transparent yellow: 5.49.255.003/1402

Lens transparent green: 5.49.255.003/1502

Please order luminous elements separately.

3

With Socket