

Signal lamps with lamp socket - E 10 (MES), 16.2 mm



Pict.: red

Screw terminals, yellow

Panel cut-out

Technical Data

General information

| | |
|--------------------|-----------------|
| Form of lens | round |
| Colour of lens | see order block |
| Diameter of collar | 20 mm |

Electrical characteristics

| | |
|--------------------|-------|
| Voltage limit max. | 250 V |
| Power limit max. | 2 W |

Dimensions

| | |
|----------------|-----------------|
| Overall height | see order block |
| Mounting depth | see order block |
| Mounting hole | 16.2 mm |

Other specifications

| | |
|--------------------------------------|------|
| Degree of protection from front side | IP40 |
| Weight | 11 g |

Mechanical design

| | |
|-------------|-----------------|
| Mounting | ring nut |
| Terminals | see order block |
| Lamp socket | E 10 |
| Lamp | filament lamp |

Approvals



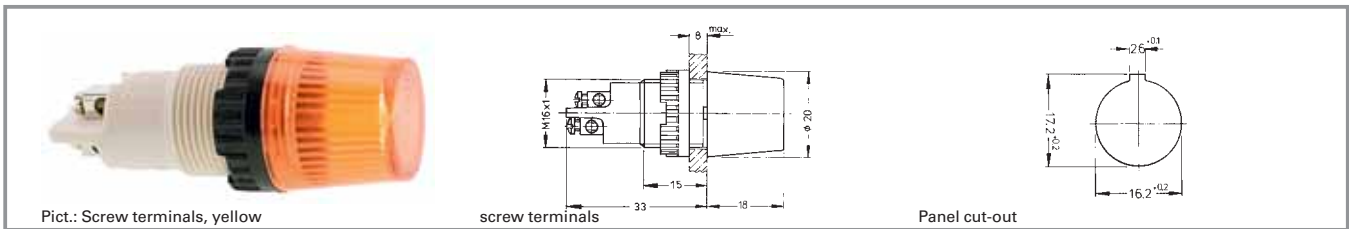
VDE 0710

With
Socket

Typical accessories Signal lamps with lamp socket - E 10 (MES), 16.2 mm

| Description | Photo | Order no. | Additional accessories see page |
|---|-------|--------------------------|---------------------------------|
| Filament lamp, E 10 (MES) base, 24 - 30 V | | 1.90.010.033/0000 | 5 - 10 |
| Filament lamp, E 10 (MES) base, 110 - 130 V | | 1.90.010.037/0000 | 5 - 10 |
| Protective sleeve for terminals | | 5.52.011.026/0100 | |
| Fixing spanner M 15, M 16 | | 5.58.002.019/0105 | 5 - 21 |

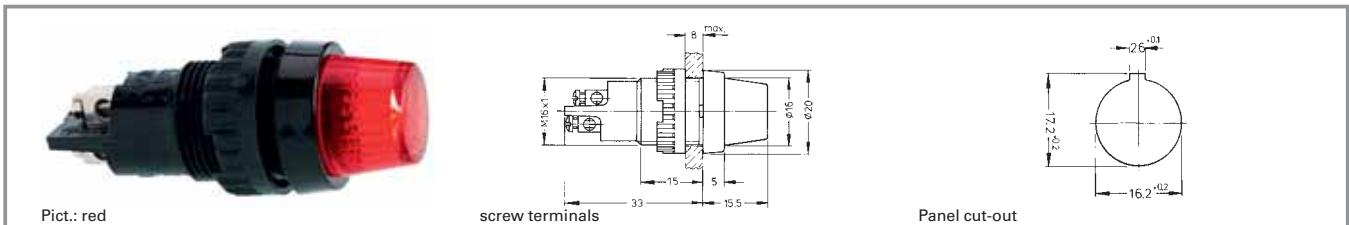
Signal lamps with lamp socket - E 10 (MES), 16.2 mm, round lens



| Voltage limit max. | Power limit max. | Terminals | Colour of lens | Order no. complete | Order no. single parts | |
|--------------------|------------------|-------------------------------|------------------------|--------------------------|------------------------|-------------------|
| | | | | | Housing | Lens |
| 250 V | 2 W | screw terminals nickel-plated | transparent colourless | 1.60.502.001/1002 | 1.60.502.099/0000 | 5.49.227.004/1002 |
| 250 V | 2 W | screw terminals nickel-plated | transparent red | 1.60.502.001/1301 | 1.60.502.099/0000 | 5.49.227.004/1301 |
| 250 V | 2 W | screw terminals nickel-plated | transparent yellow | 1.60.502.001/1402 | 1.60.502.099/0000 | 5.49.227.004/1402 |
| 250 V | 2 W | screw terminals nickel-plated | transparent green | 1.60.502.001/1502 | 1.60.502.099/0000 | 5.49.227.004/1502 |
| 250 V | 2 W | screw terminals nickel-plated | transparent blue | 1.60.502.001/1601 | 1.60.502.099/0000 | 5.49.227.004/1601 |

Technical data see page 3 - 52

Signal lamps with lamp socket - E 10 (MES), 16.2 mm, round lens

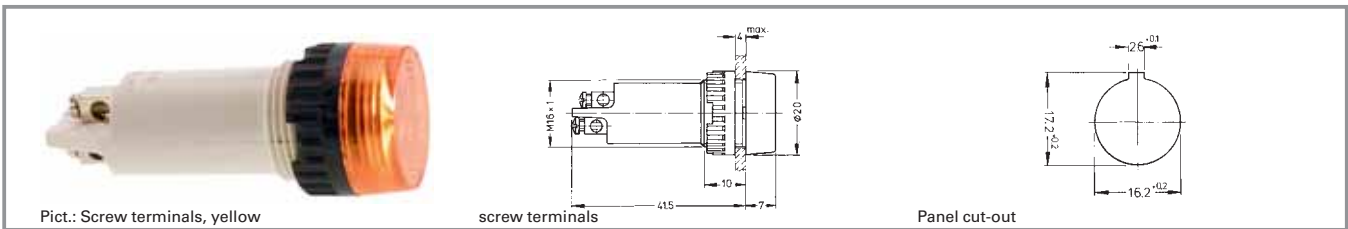


| Voltage limit max. | Power limit max. | Terminals | Colour of lens | Order no. complete | Order no. single parts | |
|--------------------|------------------|-------------------------------|------------------------|--------------------------|------------------------|-------------------|
| | | | | | Housing | Lens |
| 250 V | 2 W | screw terminals nickel-plated | transparent colourless | 1.60.502.102/1002 | 1.60.502.091/0000 | 5.49.205.013/1002 |
| 250 V | 2 W | screw terminals nickel-plated | transparent red | 1.60.502.102/1301 | 1.60.502.091/0000 | 5.49.205.013/1301 |
| 250 V | 2 W | screw terminals nickel-plated | transparent yellow | 1.60.502.102/1402 | 1.60.502.091/0000 | 5.49.205.013/1402 |
| 250 V | 2 W | screw terminals nickel-plated | transparent green | 1.60.502.102/1502 | 1.60.502.091/0000 | 5.49.205.013/1502 |
| 250 V | 2 W | screw terminals nickel-plated | transparent blue | 1.60.502.102/1601 | 1.60.502.091/0000 | 5.49.205.013/1601 |

Technical data see page 3 - 52

Versions with 2.8 x 0.8 quick-connect terminals available on request.

Signal lamps with lamp socket - E 10 (MES), 16.2 mm, round lens



| Voltage limit max. | Power limit max. | Terminals | Colour of lens | Order no. complete | Order no. single parts | |
|--------------------|------------------|-------------------------------|------------------------|--------------------------|------------------------|-------------------|
| | | | | | Housing | Lens |
| 250 V | 2 W | screw terminals nickel-plated | transparent colourless | 1.60.502.002/1002 | 1.60.502.098/0000 | 5.49.227.005/1002 |
| 250 V | 2 W | screw terminals nickel-plated | transparent red | 1.60.502.002/1301 | 1.60.502.098/0000 | 5.49.227.005/1301 |
| 250 V | 2 W | screw terminals nickel-plated | transparent yellow | 1.60.502.002/1402 | 1.60.502.098/0000 | 5.49.227.005/1402 |
| 250 V | 2 W | screw terminals nickel-plated | transparent green | 1.60.502.002/1502 | 1.60.502.098/0000 | 5.49.227.005/1502 |
| 250 V | 2 W | screw terminals nickel-plated | transparent blue | 1.60.502.002/1601 | 1.60.502.098/0000 | 5.49.227.005/1601 |

Technical data see page 3 - 52

3

With Socket