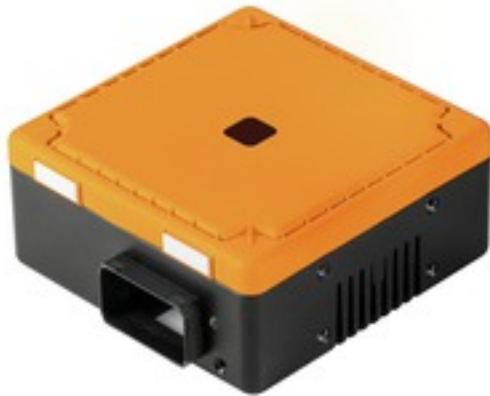


**Industrial Ethernet  
IE-CL240W-PP-REMOTE**

**Weidmüller Interface GmbH & Co. KG**  
Klingenbergstraße 16  
D-32758 Detmold  
Germany  
Fon: +49 5231 1429-0  
Fax: +49 5231 14292083  
www.weidmueller.com



Contactless and maintenance-free energy transmission up to 240 W – FreeCon Contactless offers top performance with the smallest dimensions and maximum efficiency.

**General ordering data**

Type	IE-CL240W-PP-REMOTE
Order No.	<a href="#">1547450000</a>
Version	Contactless power transmission, Secondary side
GTIN (EAN)	4050118353051
Qty.	1 pc(s).

**Industrial Ethernet  
IE-CL240W-PP-REMOTE**

**Weidmüller Interface GmbH & Co. KG**  
 Klingenbergstraße 16  
 D-32758 Detmold  
 Germany  
 Fon: +49 5231 1429-0  
 Fax: +49 5231 14292083  
 www.weidmueller.com

**Technical data**
**Dimensions and weights**

Length	100 mm	Length (inches)	3.937 inch
Width	100 mm	Width (inches)	3.937 inch
Height	50 mm	Height (inches)	1.969 inch
Weight	1,020 g	Net weight	1,020 g

**Temperatures**

Operating temperature	-20 °C...45 °C	Note: room temperature (service)	Consider derating
Storage temperature		Installation temperature	

**General data**

Air gap	0...5 mm	Centre offset	max. 5mm
Coupling time	< 500 ms	Housing main material	Diecast zinc, painted, Cover PBT
Loads	Inductive and resistive loads	Power interface	PROFINET PushPull Power
Protection degree	IP65	Secondary current max.	10 A
Technologie, version	Inductive resonance coupling	Weight	1,020 g

**Electrical properties**

Degree of efficiency	max. 91 %	LED indicator	Status indication via multi-coloured LED
Secondary current max.	10 A	Secondary voltage	24 V DC (19.2...28.8 V DC)

**Classifications**

ETIM 6.0	EC002542	eClass 6.2	27-25-05-04
eClass 9.1	27-04-91-90		

**Downloads**

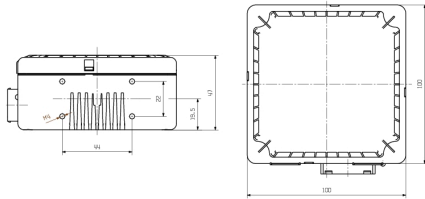
Approval/Certificate/Document of Conformity	<a href="#">EMV / EMC Test</a> <a href="#">CE_FreeCon_Contactless.pdf</a>
Engineering Data	<a href="#">STEP</a>
User Documentation	<a href="#">Manual EN</a> <a href="#">MAN IE GUIDE DE</a> <a href="#">MAN IE GUIDE EN</a> <a href="#">Short Manual</a> <a href="#">Manual DE</a>

**Industrial Ethernet  
IE-CL240W-PP-REMOTE**

**Weidmüller Interface GmbH & Co. KG**  
 Klingenbergstraße 16  
 D-32758 Detmold  
 Germany  
 Fon: +49 5231 1429-0  
 Fax: +49 5231 14292083  
 www.weidmueller.com

**Drawings**

**Dimensioned drawing**



**Derating curve**

