

**Industrial Ethernet
IE-CL240W-PP-BASE**

Weidmüller Interface GmbH & Co. KG
Klingenbergstraße 16
D-32758 Detmold
Germany
Fon: +49 5231 1429-0
Fax: +49 5231 14292083
www.weidmueller.com



Contactless and maintenance-free energy transmission up to 240 W – FreeCon Contactless offers top performance with the smallest dimensions and maximum efficiency.

General ordering data

Type	IE-CL240W-PP-BASE
Order No.	1547440000
Version	Contactless power transmission, Primary side
GTIN (EAN)	4050118352887
Qty.	1 pc(s).

**Industrial Ethernet
IE-CL240W-PP-BASE**

Weidmüller Interface GmbH & Co. KG
 Klingenbergstraße 16
 D-32758 Detmold
 Germany
 Fon: +49 5231 1429-0
 Fax: +49 5231 14292083
 www.weidmueller.com

Technical data**Dimensions and weights**

Length	100 mm	Length (inches)	3.937 inch
Width	100 mm	Width (inches)	3.937 inch
Height	50 mm	Height (inches)	1.969 inch
Weight	1,020 g	Net weight	1,020 g

Temperatures

Operating temperature	-20 °C...45 °C	Note: room temperature (service)	Consider derating
Storage temperature		Installation temperature	

General data

Air gap	0...5 mm	Centre offset	max. 5mm
Housing main material	Diecast zinc, painted, Cover PBT	Loads	Inductive and resistive loads
Power interface	PROFINET PushPull Power	Protection degree	IP65
Technologie, version	Inductive resonance coupling	Turn-on time	1 s
Weight	1,020 g		

Electrical properties

Degree of efficiency	max. 91 %	LED indicator	Status indication via multi- coloured LED
Primary voltage	24 V DC (21.6...26.4 V DC)		

Classifications

ETIM 6.0	EC002542	eClass 6.2	27-25-05-04
eClass 9.1	27-04-91-90		

Downloads

Approval/Certificate/Document of Conformity	EMV / EMC Test CE_FreeCon_Contactless.pdf
Engineering Data	STEP
User Documentation	Manual EN MAN IE GUIDE DE MAN IE GUIDE EN Short Manual Manual DE

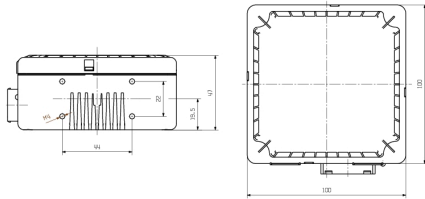
Data sheet

**Industrial Ethernet
IE-CL240W-PP-BASE**

Weidmüller Interface GmbH & Co. KG
 Klingenbergstraße 16
 D-32758 Detmold
 Germany
 Fon: +49 5231 1429-0
 Fax: +49 5231 14292083
 www.weidmueller.com

Drawings

Dimensioned drawing



Derating curve

