

EMC filter surge protection device - TTC-6-SFP-24AC-PT



1316312

<https://www.phoenixcontact.com/gb/products/1316312>

Please be informed that the data shown in this PDF document is generated from our Online Catalog. Please find the complete data in the user documentation. Our General Terms of Use for Downloads are valid.



Surge protection with filter function for a 2-wire floating signal circuit, e.g., 0(4) ... 20 mA current loop, HART-compatible.

Your advantages

- Space-saving and cost-saving with a narrow overall width of just 6 mm
- Quick and tool-free installation of surge protective devices, thanks to Push-in connection technology
- Finding the right product for all possible requirements in MCR applications is easy, thanks to the complete range of products with customized features

Commercial Data

Item number	1316312
Packing unit	1 pc
Minimum order quantity	1 pc
Sales Key	CLC142
Product Key	CLC142
GTIN	4063151598587
Weight per Piece (including packing)	34.7 g
Weight per Piece (excluding packing)	34.7 g
Customs tariff number	85363010
Country of origin	DE

EMC filter surge protection device - TTC-6-SFP-24AC-PT



1316312

<https://www.phoenixcontact.com/gb/products/1316312>

Technical Data

Product properties

IEC test classification	C1
	C3
Type	DIN rail module, one-piece
Product type	Interference filters

Insulation characteristics

Overvoltage category	III
Pollution degree	2

Connection data

Connection method	Push-in connection
Conductor cross section flexible	0.2 mm ² ... 2.5 mm ²
Conductor cross section solid	0.2 mm ² ... 2.5 mm ²
Conductor cross section AWG	24 ... 14

Dimensions

Dimensional drawing	
Width	6.2 mm +0.1 mm
Height	105.8 mm
Depth	69.5 mm (incl. DIN rail 7.5 mm)

Material specifications

Color	traffic grey A RAL 7042
Flammability rating according to UL 94	V-0
Insulating material	PBT
Housing material	PBT

Mechanical properties

Mechanical data

Open side panel	No
-----------------	----

Protective circuit

Maximum continuous voltage U_C	38 V DC
	30 V AC
Rated current	500 mA
Operating effective current I_C at U_C	$\leq 0.1 \mu A$

EMC filter surge protection device - TTC-6-SFP-24AC-PT



1316312

<https://www.phoenixcontact.com/gb/products/1316312>

Residual current I_{PE}	$\leq 10 \mu\text{A}$
Nominal discharge surge current I_n (8/20) μs (Core-Earth)	350 A
Total discharge current I_{total} (8/20) μs	700 A
Voltage protection level U_p (line-earth)	$\leq 80 \text{ V}$ (C1 - 0.5 kV / 250 A)
	$\leq 80 \text{ V}$ (C3 - 20 A)
Response time t_A (line-earth)	$\leq 25 \text{ ns}$
Input attenuation aE, sym.	typ. 0.3 dB ($\leq 50 \text{ kHz}$ / 150 Ω)
Input attenuation aE, asym.	typ. 0.3 dB ($\leq 30 \text{ kHz}$ / 50 Ω)
Cut-off frequency f_g (3 dB), sym. in 50 Ω system	typ. 85 kHz
Cut-off frequency f_g (3 dB), sym. in 150 Ω system	typ. 95 kHz
Cut-off frequency f_g (3 dB), asym. (PE) in 50 Ω system	typ. 100 kHz
Capacity (Core-Earth)	50 nF ($\pm 30 \%$)
Inductivity in series	100 μH ($\pm 30 \%$)
Resistance per path	typ. 0.35 Ω
Surge protection fault message	none
Max. required back-up fuse	500 mA (FF)
Impulse durability (line-line)	C3 - 20 A
Impulse durability (line-earth)	C1 - 0.5 kV / 250 A
	C3 - 20 A

Environmental and real-life conditions

Ambient conditions

Degree of protection	IP20
Ambient temperature (operation)	-40 °C ... 85 °C
Ambient temperature (storage/transport)	-40 °C ... 85 °C
Altitude	$\leq 4000 \text{ m}$ (amsl (above mean sea level))
Permissible humidity (operation)	5 % ... 95 %

Standards and regulations

Standards/specifications	EN 60939-1
Standards/specifications	EN 60939-2
Standards/specifications	EN 61643-21
Standards/specifications	IEC 61643-21

Mounting

Mounting type	DIN rail: TH 35 - 7.5 mm
---------------	--------------------------

EMC filter surge protection device - TTC-6-SFP-24AC-PT

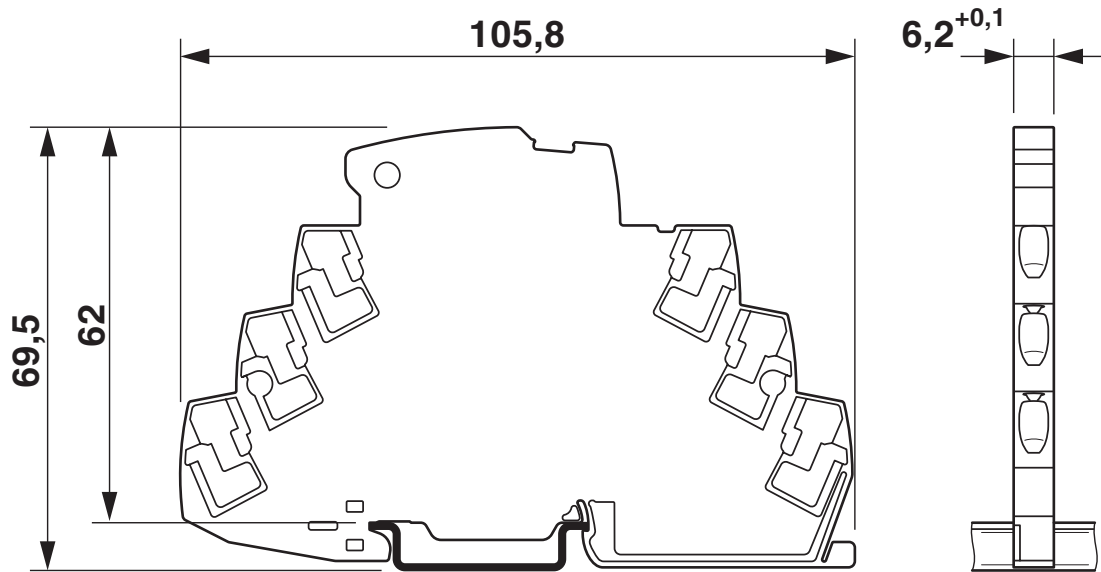


1316312

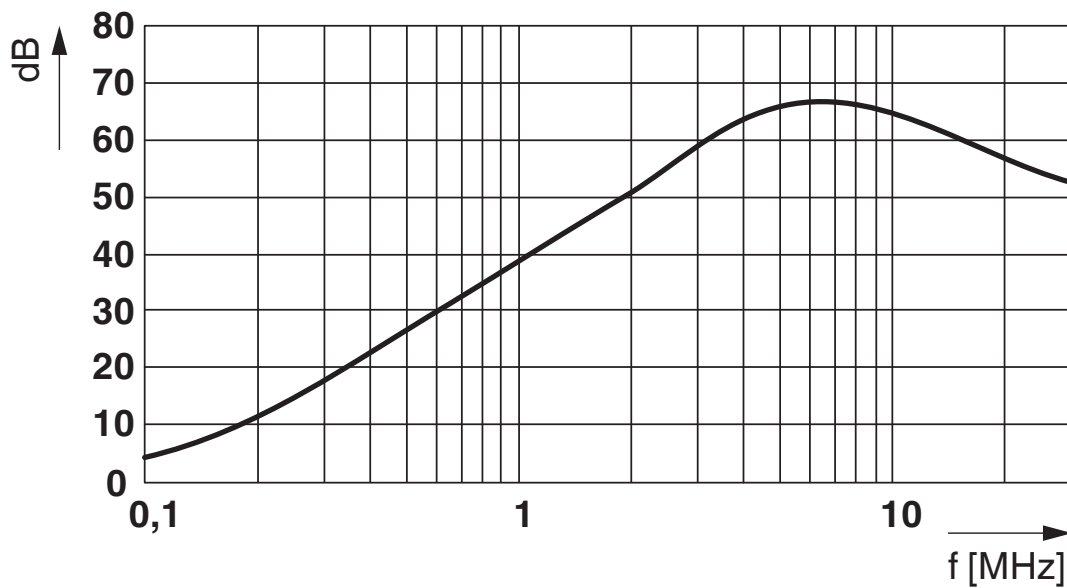
<https://www.phoenixcontact.com/gb/products/1316312>

Drawings

Dimensional drawing



Diagram



Frequency-response curve symmetrical (50 ohms)

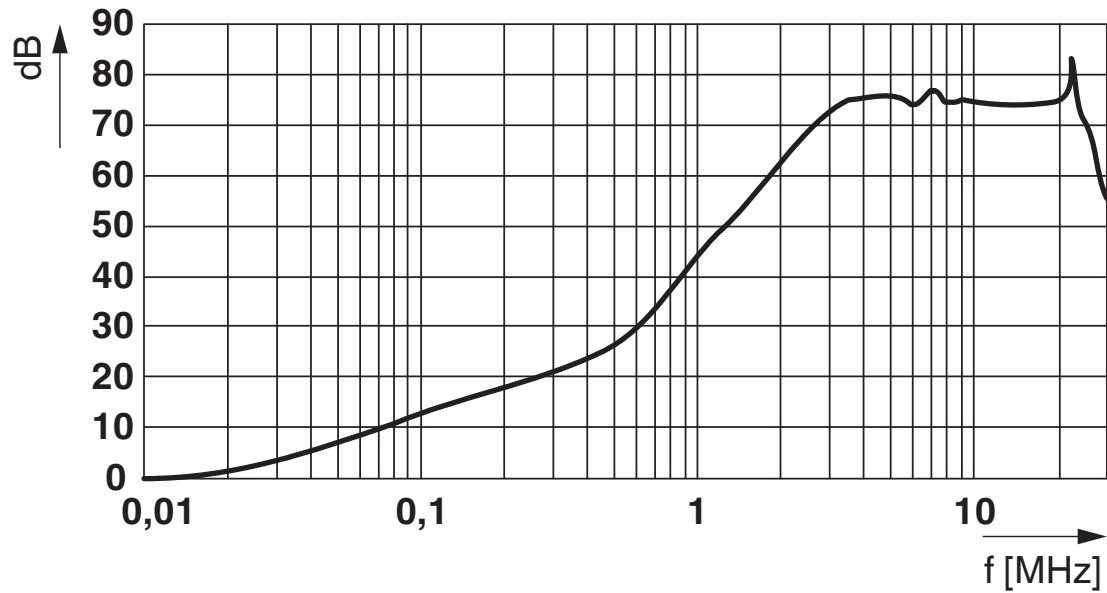
EMC filter surge protection device - TTC-6-SFP-24AC-PT



1316312

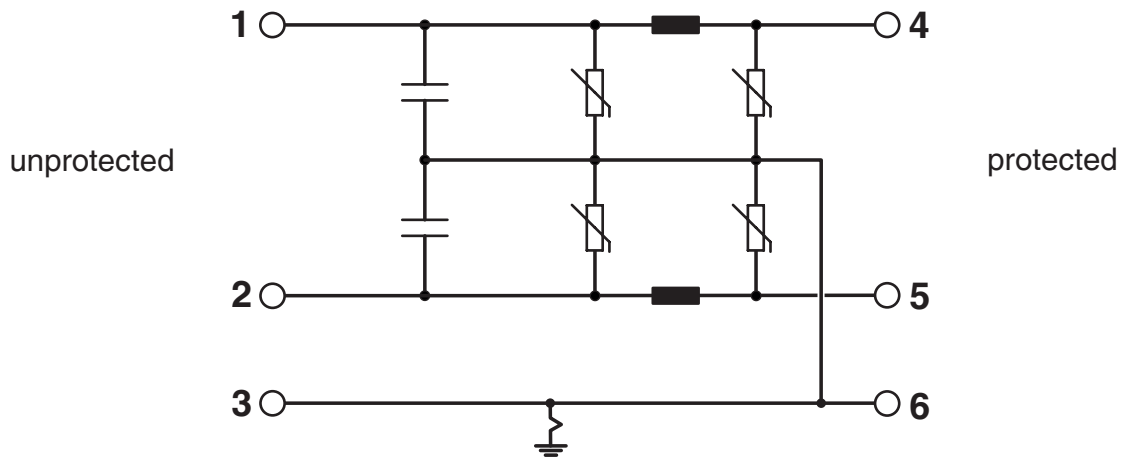
<https://www.phoenixcontact.com/gb/products/1316312>

Diagram



Frequency-response curve asymmetrical (150 ohms)

Circuit diagram



EMC filter surge protection device - TTC-6-SFP-24AC-PT



1316312

<https://www.phoenixcontact.com/gb/products/1316312>

Classifications

ECLASS

ECLASS-9.0	27130807
ECLASS-10.0.1	27130807
ECLASS-11.0	27130807

ETIM

ETIM 8.0	EC000943
----------	----------

UNSPSC

UNSPSC 21.0	39121600
-------------	----------

EMC filter surge protection device - TTC-6-SFP-24AC-PT



1316312

<https://www.phoenixcontact.com/gb/products/1316312>

Accessories

Marker pen

Marker pen - X-PEN 0,35 - 0811228

<https://www.phoenixcontact.com/gb/products/0811228>



Marker pen without ink cartridge, for manual labeling of markers, labeling extremely wipe-proof, line thickness 0.35 mm

Zack Marker strip, flat

Zack Marker strip, flat - ZBF 6 CUS - 0825027

<https://www.phoenixcontact.com/gb/products/0825027>



Zack Marker strip, flat, Strip, can be ordered: Strip, white, labeled according to customer specifications, mounting type: snap into flat marker groove, for terminal block width: 6.2 mm, lettering field size: 5.15 x 6.15 mm, Number of individual labels: 10

EMC filter surge protection device - TTC-6-SFP-24AC-PT



1316312

<https://www.phoenixcontact.com/gb/products/1316312>

Zack Marker strip, flat

Zack Marker strip, flat - ZBF 6:UNBEDRUCKT - 0808710

<https://www.phoenixcontact.com/gb/products/0808710>



Zack Marker strip, flat, Strip, white, unlabeled, can be labeled with: PLOTMARK, CMS-P1-PLOTTER, mounting type: snapped, for terminal block width: 6.2 mm, lettering field size: 5.15 x 6.15 mm, Number of individual labels: 10

Zack Marker strip, flat

Zack Marker strip, flat - ZBF 6/WH-100:UNBEDRUCKT - 0808736

<https://www.phoenixcontact.com/gb/products/0808736>



Zack Marker strip, flat, Strip, white, unlabeled, can be labeled with: PLOTMARK, CMS-P1-PLOTTER, mounting type: snapped, for terminal block width: 6.2 mm, lettering field size: 5.15 x 6.15 mm, Number of individual labels: 1000

EMC filter surge protection device - TTC-6-SFP-24AC-PT



1316312

<https://www.phoenixcontact.com/gb/products/1316312>

End clamp

End clamp - CLIPFIX 35-5 - 3022276

<https://www.phoenixcontact.com/gb/products/3022276>



Quick mounting end clamp for NS 35/7,5 DIN rail or NS 35/15 DIN rail, with marking option, with parking option for FBS...5, FBS...6, KSS 5, KSS 6, width: 5.15 mm, color: gray

Phoenix Contact 2022 © - all rights reserved

<https://www.phoenixcontact.com>

PHOENIX CONTACT Ltd

Halesfield 13, Telford

Shropshire, TF7 4PG

01952 681700

info@phoenixcontact.co.uk