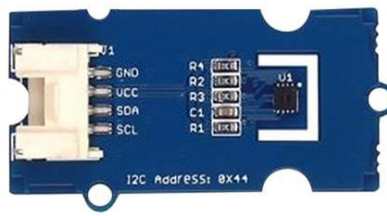
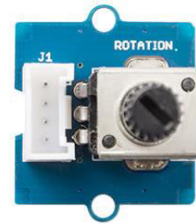
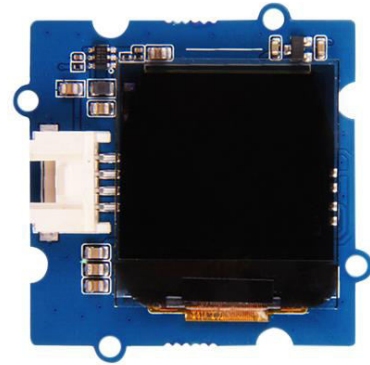
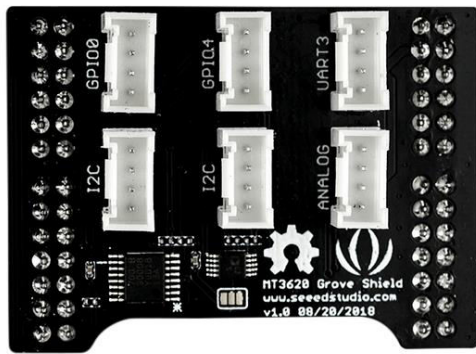




**seed** studio  
The IoT Hardware Enabler



This is a basic starter kit for Azure Sphere MT3620 Development kit. The kit integrates SeedStudio's most popular ready-to-use modular system – Grove. It aims at helping developers get started quickly and experience the Azure Sphere solutions.

Please note that **Azure Sphere MT3620 Development kit is required but not included in this Starter kit.**

Microsoft Azure Sphere is a solution for creating highly-secured, connected, MCU-powered devices. Azure Sphere brings together the best of Microsoft's expertise in cloud, software and silicon—resulting in a unique approach to security that starts in the silicon and extends to the cloud. Together, Azure Sphere certified MCUs, the Azure Sphere OS, and the Azure Sphere Security Service provide you with the confidence and the power to reimagine your business and create the future.

The kit includes one MT3620 Grove shield, which offers:

- 1 x UART
- 2 x I2C
- 1 x Analog
- 4 x GPIO

and 6 Grove modules in several categories:

<b>Category</b>	<b>Module</b>	<b>Description</b>
<b>Analog Input</b>	Grove - Rotary Angle Sensor	Produces an analogue value, which can be read by ADC
	Grove - Light Sensor v1.2	Measuring light levels
<b>Digital Output</b>	Grove – Buzzer	Driven by a digital signal and emits a tone
	Grove - Relay	Driven by a digital signal and switches much higher voltages
<b>Digital I/O</b>	Grove - Blue LED Button	Button acts as an input , LED as an output device
<b>Sensor</b>	Grove - Temp&Humi Sensor(SHT31)	Collects temperature and can be read via I2C interface
<b>Display</b>	Grove - OLED Display 1.12" V2	OLED can display character and picture

### Technical details

Dimensions	200mm x130mm x50mm
Weight	G.W 200g
Battery	Exclude

### Part List

MT3620 Grove Shield	1
Grove - Rotary Angle Sensor	1
Grove - Temp&Humi Sensor(SHT31)	1
Grove - Relay	1
Grove - OLED Display 1.12" V2	1
Grove - Buzzer	1
Grove - Blue LED Button	1
Grove - Light Sensor v1.2	1

## **ECCN/HTS**

ECCN	EAR99
HSCODE	9023009000
USHSCODE	9023000000