

PKA70B1/4 ✓ ACTIVE

[Alcoswitch](#) | [Alcoswitch PKA](#)

TE Internal #: 1-1437624-5

Alcoswitch PKA, Switch Knobs, Knob, Phenolic, Ribbed Knob Design, .25 in [6.35 mm] Shaft Size, 24.9 mm [.98 in] Diameter, Black, Line

[View on TE.com >](#)



Relays, Contactors & Switches > Switches > Switch Knobs



Switch Knob Product Type: **Knob**

Switch Knob Material: **Phenolic**

Knob Design: **Ribbed**

Shaft Size: **6.35 mm [.25 in]**

Switch Knob Diameter: **24.9 mm [.98 in]**

Features

Product Type Features

Switch Knob Product Type	Knob
--------------------------	------

Configuration Features

Skirt	With
Spinner	Without
Spin Plate	Without
Knob Design	Ribbed

Body Features

Switch Knob Material	Phenolic
Switch Knob Color	Black

Dimensions

Shaft Size	6.35 mm[.25 in]
Switch Knob Diameter	24.9 mm[.98 in]

Identification Marking

Indicator Style	Line
Indicator Location	On Skirt

Other

Comment	Top spun aluminum inlay
---------	-------------------------



Product Compliance

[For compliance documentation, visit the product page on TE.com>](#)

EU RoHS Directive 2011/65/EU	Compliant
EU ELV Directive 2000/53/EC	Compliant
China RoHS 2 Directive MIIT Order No 32, 2016	No Restricted Materials Above Threshold
EU REACH Regulation (EC) No. 1907/2006	Current ECHA Candidate List: JAN 2022 (223) Candidate List Declared Against: JAN 2022 (223) Does not contain REACH SVHC
Halogen Content	Low Halogen - Br, Cl, F, I < 900 ppm per homogenous material. Also BFR/CFR/PVC Free
Solder Process Capability	Not applicable for solder process capability

Product Compliance Disclaimer

This information is provided based on reasonable inquiry of our suppliers and represents our current actual knowledge based on the information they provided. This information is subject to change. The part numbers that TE has identified as EU RoHS compliant have a maximum concentration of 0.1% by weight in homogenous materials for lead, hexavalent chromium, mercury, PBB, PBDE, DBP, BBP, DEHP, DIBP, and 0.01% for cadmium, or qualify for an exemption to these limits as defined in the Annexes of Directive 2011/65/EU (RoHS2). Finished electrical and electronic equipment products will be CE marked as required by Directive 2011/65/EU. Components may not be CE marked. Additionally, the part numbers that TE has identified as EU ELV compliant have a maximum concentration of 0.1% by weight in homogenous materials for lead, hexavalent chromium, and mercury, and 0.01% for cadmium, or qualify for an exemption to these limits as defined in the Annexes of Directive 2000/53/EC (ELV). Regarding the REACH Regulation, the information TE provides on SVHC in articles for this part number is based on the latest European Chemicals Agency (ECHA) 'Guidance on requirements for substances in articles' posted at this URL: <https://echa.europa.eu/guidance-documents/guidance-on-reach>

Compatible Parts



Also in the Series | [Alcoswitch PKA](#)



Switch Knobs(4)



Toggle Switches(3)

Customers Also Bought



TE Part #3-643816-4
04P MTA100 CONN ASSY POL RIB



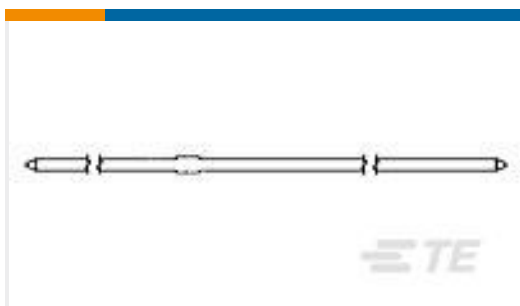
TE Part #1-51864-0
TERMINAL,PIDG R IR 16 8



TE Part #41290
250 FASTON,TAB,BR



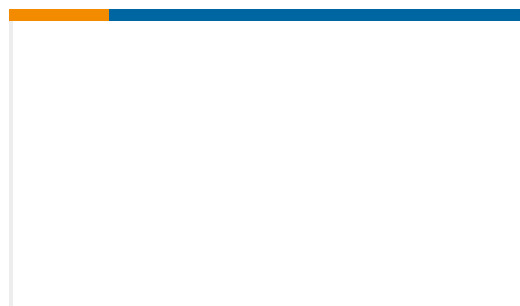
TE Part #647845-8
SERIES 50 HOUSING,YELLOW



TE Part #85931-6
MODII POST LP 30 AU



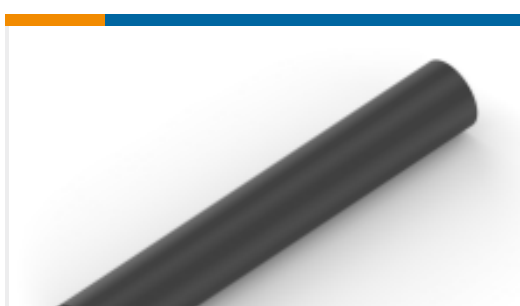
TE Part #2-1437624-0
PKAP70B1/4=KNOB LEX W/POINTER



TE Part #1-1437602-5
SMCD131AK=SW BI-DIR W/LIMITS S



TE Part #1SNK145011R0000
MC512PA 1->100 Horizontal



TE Part #NB14882001
DWP-125-1/8-0-STK



TE Part #1878643-6
M5031C

Documents

Product Drawings

[PKA70B1/4=KNOB PLASTIC 1/4 IN](#)

English

CAD Files

[Customer View Model](#)

[ENG_CVM_1-1437624-5_D.3d_igs.zip](#)

English

[Customer View Model](#)



[ENG_CVM_1-1437624-5_D.3d_stp.zip](#)

English

Customer View Model

[ENG_CVM_1-1437624-5_D.2d_dxf.zip](#)

English

3D PDF

English

By downloading the CAD file I accept and agree to the [Terms and Conditions](#) of use.

Product Environmental Compliance

Product Compliance

English

Product Compliance

English