



# A<sup>RF62</sup> Bluetooth® Class1 RS232 Dongle



## User Guide

No part of this document may be reproduced or transmitted (in electronic or paper version, photocopy) without Adeunis RF consent.

This document is subject to change without notice.

All trademarks mentioned in this guide are the property of their respective owner.

ADEUNIS RF

283, rue Louis Néel

38920 Crolles

France

Phone +33 (0)4 76 92 07 77

Fax +33 (0)4 76 08 97 46

Ref. 08-01-V1-pcy

## Table of Contents

<b>About this Document</b> .....	<b>2</b>
<b>Declaration of conformity</b> .....	<b>3</b>
<b>Overview</b> .....	<b>4</b>
<b>Interface</b> .....	<b>5</b>
Mechanical specification .....	5
Power supply input .....	5
Signal description .....	6
<b>Profiles</b> .....	<b>6</b>
SPP wiring and configuration .....	7
DUN wiring and configuration .....	8
<b>Dongle operating mode</b> .....	<b>9</b>
Command mode .....	9
Transparent mode .....	10
<b>Remote control configuration</b> .....	<b>10</b>
<b>AT Commands</b> .....	<b>11</b>
Description .....	11
Set of commands .....	11
Register description .....	13
<b>Specifications</b> .....	<b>17</b>
<b>Annex 1 : Firmware and document updates</b> .....	<b>18</b>

## About this Document

This guide describes the A<sup>RF62</sup> devices, their options and accessories.

## Declaration of conformity



Manufacturer's name: **ADEUNIS R.F.**  
 Manufacturer's address: Parc Technologique PRE ROUX IV  
 283 rue Louis NEEL  
 38920 CROLLES - FRANCE

declares that the product is used and installed according to the user guide available on our web site [www.adeunis-rf.com](http://www.adeunis-rf.com)

Product Name: **ARF62**  
 Product Number(s): **ARF7501/ARF7502/ARF7503**  
 is designed to comply with the RTTE Directive 99/5/EC:

EMC: according to the harmonized standard EN 301 489.  
 Safety: according to the standard EN 60950-1/2001  
 Radio: according to harmonized standard EN 300-328 covering essential radio requirements of the RTTE directive.  
 Notes: - Conformity has been evaluated according to the procedure described in Annex III of the RTTE directive.  
 - Receiver class (if applicable): 3.  
 According to the 1999/519/EC recommendation, minimum distance between the product and the body could be required depending on the dongle integration.

Crolles, December 5th, 2008  
 VINCENT Hervé / Quality manager

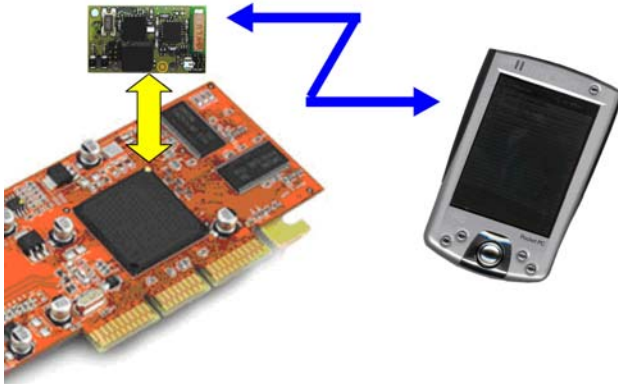
A handwritten signature in black ink, appearing to be 'V. Hervé', is written over the name of the quality manager.

### Download of the user guide

Thank you for having chosen the ADEUNIS RF products.  
 User guides can be uploaded directly on our web site [www.adeunis-rf.com](http://www.adeunis-rf.com)  
 Index **Products**  
 Paragraph **OEM Dongles > Bluetooth® Dongle**  
 Print version available upon request  
 Tel : +33 4 76 92 07 77  
 Email : [arf@adeunis-rf.com](mailto:arf@adeunis-rf.com)

## Overview

The A<sup>RF62</sup> Bluetooth class 1 dongle enables Bluetooth<sup>®</sup> compliant duplex communications over a 150-meter range in the worldwide 2.45 GHz frequency band.



The A<sup>RF62</sup> dongle fully complies with the V2 Bluetooth<sup>®</sup> standard and air data rate goes up to 723 kbps. Data exchange and set-up are only done through an UART data port, under SPP or DUN profile. A miniature antenna is integrated.

A<sup>RF62</sup> can be used in two modes: command mode and transparent mode. The command mode is used to established Bluetooth communications and set/get parameters. The transparent mode is used for data exchange. The dongle converts data from a serial link into a Bluetooth<sup>®</sup> radio frame to be sent to a similar piece of equipment. The communication is half-duplex.

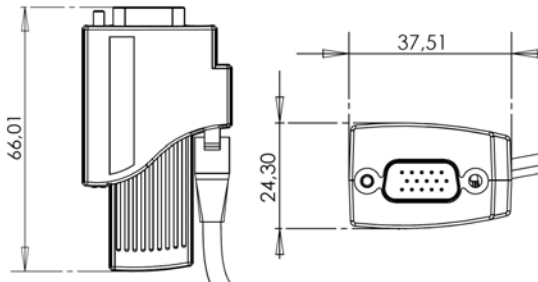
The operating parameters of the Bluetooth dongle (serial link, Bluetooth<sup>®</sup> management...) can be fully updated through AT commands via the serial link.

We recommend reading the "specification of the Bluetooth<sup>®</sup> system core 2.0 + EDR" document available at the [www.bluetooth.com](http://www.bluetooth.com) web site.

## Interface

### Mechanical specification

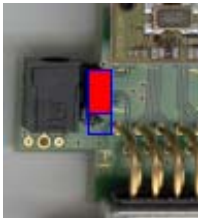
65 x 40 x 25 mm



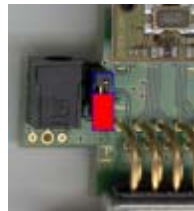
### Power supply input

ARF62 dongles may be supplied using an external power supply through  $\mu$ Jack plug (default) or through RI pin / DB connector. Selection is done with an internal onboard jumper:

#### External Power Supply



#### RI Power Supply



**NOTE :**

ARF62 external power supply is done through a female  $\varnothing 3.5$  mm DC  $\mu$ Jack (Positive on inner pin  $\varnothing 1.3$  mm)

## Signal description

ARF750X Bluetooth Dongles pinout.

Interface Pin	Interface Pin	Interface Pin	Name	Description
ARF7501 Fem DB9 DCE	ARF7502 Mal DB9 DTE	ARF7503 Mal DB15HD DTE		Digital interface
5	5	9	GND	Ground
3 (I)	3 (O)	2 (O)	TXD	Serial data transmission
2 (O)	2 (I)	6 (I)	RXD	Serial data reception
8 (O)	8 (I)	11 (I)	CTS	Clear To Send
7 (I)	7 (O)	12 (O)	RTS	Request To Send
4 (I)	4 (O)	8 (O)	DTR	Data Terminal ready
6 (O)	6 (I)	7 (I)	DSR	Data Set Ready
9 (O)	9 (I)	13 (I)	RI	Ring Indicator / (DC Supply Input -if selected-)
1 (O)	1 (I)	1 (I)	DCD	Data Carrier Detect

## Profiles

The dongle supports 2 different profiles: **SPP and DUN**.

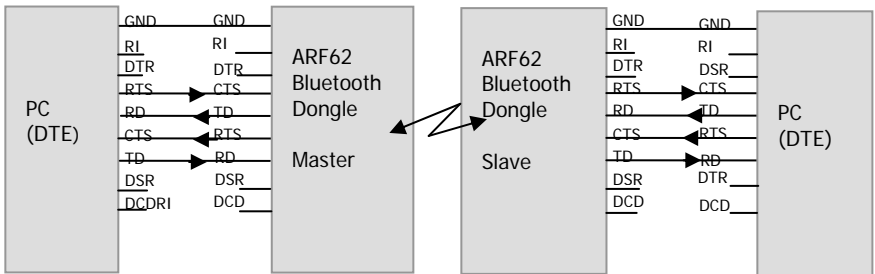
A basic dongle configuration is provided as a guideline for each profile (for more details or customisation see § AT commands).

The dongle can be configured using a terminal at 115200 baud, 8 bits, 1 stop, HW flow control (default serial configuration)



## SPP wiring and configuration

**SPP** (Serial Port Profile) is the standard Bluetooth<sup>®</sup> profile.



**SPP configuration guideline :** in the following example, the Master is configured to performed an auto-connection on reset.

**Master configuration :** enters the command mode using the A+++ sequence. When the <OK> answer is receive, send the following commands:

```

ATS202=1 (auto-connect on reset)
ATS220=1 (SPP profil, default value)
ATS203= slave BT address (use ATINQ 0,10 command to discover
the slave @)
AT&W (save the configuration)

```

**Slave configuration :** enters the command mode and then send the following commands:

```

ATS202=0 (auto-connect disable, default value)
ATS220=1 (SPP profil)
AT&W (save the configuration)

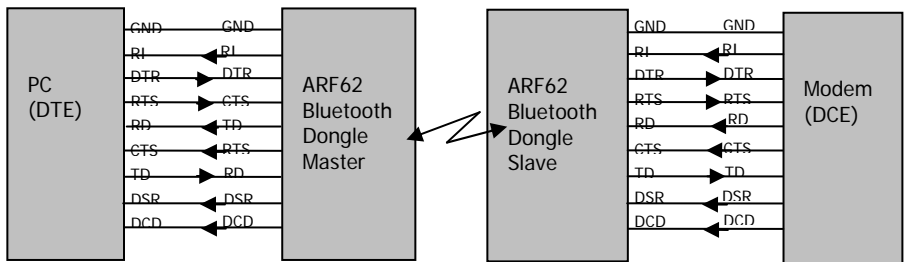
```

Perform a power cycle on both dongles. The dongles are now in transparent mode; the link will be established automatically on reset by the master. When the link is established data can be exchanged using the serial link.

Caution the BT connection establishment can takes several seconds (you can check this establishment in command mode using the AT&L command).

## DUN wiring and configuration

**DUN** (Dial up Network) profile is above the SPP profile. This profile manages the 4 lines DTR, DSR, DCD and RI and is dedicated to PSTN or GSM modems.



DUN configuration guideline : in the following example, the Master is configured to performed an auto-connection on DSR.

Master configuration : enters the command mode using the A+++ sequence. When the <OK> answer is receive, send the following commands :

ATS202=2 (auto-connect on DTR)

ATS220=2 (Dun profil)

ATS203= slave BT address (use ATINQ 0,10 command to discover the slave @)

AT&W (save the configuration)

Slave configuration : enters the command mode and then send the following commands :

ATS202=0 (auto-connect disable, default value)

ATS220=2 (Dun profil) AT&W (save the configuration)

Exit the command mode or perform a power cycle on both dongles. The dongles are now in transparent mode; the link will be established when the

DTR is activated on the master.

When the link is established data can be exchanged using the serial link.

Caution the BT connection establishment can takes several seconds (you can check this establishment either in command mode using the AT&L command or by checking report of a remote signal).

DTR/DSR/RI and DCD I/O configuration :

These lines are set as inputs while the connection is not established or released,

And set as input and output according to the DUN illustration and to the description done in signal description table.

## Dongle operating mode

Two operating modes are available:

- Command mode (usage of AT commands and SPP\_CONFIG mode),
- Transparent mode (serial data are transmitted on radio link).

At power up, the dongle is in transparent mode according to the registers configuration. The boot time is about 1s.

### Command mode

The command mode is used to read and update the dongle configuration registers using AT commands.

In command mode, the radio is inhibited (reception and transmission), excepted when using test command.

**Entering command mode** : issues on the serial link a A+++ sequence. The sequence A+++ characters is accepted only if no character has been seen before and after the A+++ sequence. Register (S214) defines the silence duration.

**Tips** : if you are using a terminal (such as Hyperterm), you have to send the A+++ sequence using a text file (first create a text file containing only the A+++ characters, and then use in Hyperterm the command "Send text file" in the "Transfer menu")

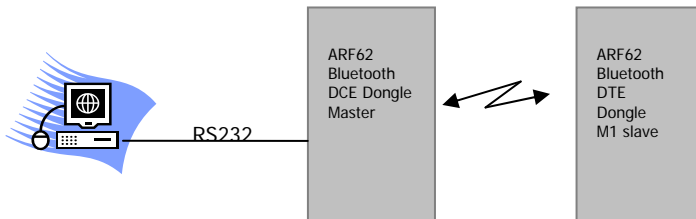
**Exiting command mode** (return back in transceiver mode) : send the serial command  
ATO <cr>

## Transparent mode

In transparent mode, data received from the serial link are transmitted on the radio link. When data are received on the radio link, these data are sent on the serial link.

## Remote control configuration

SPP\_CONFIG mode is used to remotely configure the slave dongle through the master dongle serial link.



This is done, on master side, in 4 steps:

Activation of the SPP\_CONFIG mode using the ATC1 command. When this mode is activated, the command issued on the master will be ignored by the master and transmitted to the slave by radio.

Slave configuration: send command to the slave using the Master serial link. When the remote configuration is done, the master must send an AT&W command to the slave (the AT&W command is mandatory because the slave reboots when the master leaves the SPP\_CONFIG mode or when the RF link is loosed).

Leaving of the SPP\_CONFIG mode using the ATC0 command.

## AT Commands

### Description

**AT commands are interpreted only when the dongle is in Command mode.**

**Commands** : are used to read and update the dongle parameters

A command starts with the 2 ASCII 'AT' characters. 'AT' means 'Attention' follow with one or several characters or other data.

Each command is ended with <cr> (carriage return).

In the same command, the time between 2 characters must be less than 10s.

**Response** : is sent back for each command on the serial link. The answer is:

- <cr><lf 'OK'<cr><lf> (ASCII character 0x4F) for accepted command (or OK command)
- <cr><lf 'ERROR'<cr><lf> for error
- Specific string when specified

### Set of commands

**The SPP CONFIG column indicates whether the command is available or not when the dongle is in SPP CONFIG mode (ATC1 command).**

Commands	Description	SPP CONFIG
	Operating mode selection	
ATO	Return back to transparent mode.	NO
<silence> <b>A+++</b> <silence>	Command mode activation. The A+++ sequence must be preceded and followed by a calibrated silence (no other character)	NO
	Registers management	
ATSn?	Displays the Sn register content where n represents the register number. The response has the following format: Sn=y<cr><lf>	YES
ATSn=m	Sets the Sn register value with 'm'. n represents the register number..	YES
AT&W	Saves the new register configuration in EEPROM. Each time you switch on the modem, the EEPROM configuration will be loaded in the modem registers.	YES
AT&V	Displays all register values. The response has the following format: Sxxx=y<cr><lf> for each register.	YES
AT&F	Restore the register default values	YES
	BT LINK management	
<b>ATINQ</b> <space>MaxDevice, TimeOut	Launch Bluetooth inquiry of devices for a duration d multiple of 1.28s <1..48>, for maximum n (0=unlimited, 1= one device, ...) devices Return BT address and class of device of each peripheral Example : ATINQ 0,10	NO
<b>ATD</b> <space>Bluetooth address	Establish Bluetooth link with device <Bluetooth address> Link established : answer 'OK'<cr><lf> Link not established : answer 'NO CARRIER'<cr><lf> Example : ATD 0018B2000110	NO
ATH	Release Bluetooth link	NO
AT&L	Link connection status. released or established	NO
AT&RSSI	RSSI indicator Link established : answer -xx dBm<cr><lf> (-45 dBm for example) Link not established : answer 'LINK RELEASED<cr><lf> RSSI > -70 dBm : Excellent receipt -70 > RSSI > -80 dBm : Good receipt -80 > RSSI > -90 dBm : Poor receipt RSSI < -90 dBm : Bad receipt	NO
	Miscellaneous	
ATI	Software version display. The response has the following format: Adeunis RF : 7456 Vxx.yy<cr><lf>	YES
ATC0	Exit SPP Config mode	YES
ATC1	Enter SPP Config mode	NO
	Test modes	

AT&T0=xxxx,yyyy,zzzzz	Continuous transmission at xxxx (2402<=xxxx<=2480) MHz, with a designated output power yy (0<=yyyy<=65530) and designated tone modulation frequency zzzzz (0<=zzzzz<=65535). Example : AT&T0=2450,65530,0	NO
AT&T1=xxxx, yyyy	Enables the transmitter at xxxx (2402<=xxxx<=2480) MHz, with a designated output power yy (0<= yyyy <=65530). Payload is PRBS9 data. Example : AT&T1=2450,65530	NO
AT&T2=x, yyyy	Enables the transmitter with a simplified hop sequence designated by the country code x (0<=x<=3), with a designated output power yy (0<=yyyy<=65535). Payload is PRBS9 data. Example : AT&T2=0,65530	NO
AT&T3=xxxx,y,zz	Enables the receiver in continuous reception at xxxx (2402<=xxxx<=2480) MHz, with a choice of low (y=0) or high (y=1) side modulation and a designated attenuation zz (0<=zz<=15). Example : AT&T3=2450,0,0	NO
AT&T4=xxxx, yyyy	Test loopback at xxxx (2402<=xxxx<=2480) MHz, with a designated output power yy (0<= yyyy <=65530). Example : AT&T4=2450,65530	NO

## Register description

The register value could be updated using the ATSn=m<cr> command and displayed using Aton?<cr> command.

At power-up, the previous dongle configuration is read from E2PROM (non volatile) and stored in RAM. The registers are located in RAM, any modification is performed in RAM: To save current register configurations, it is necessary to use the AT&W<cr> command (If not, the updated parameters are lost in case of power shortage).

The registers are shared in 2 types: read only (R) or read/write (R/W)

Type	Register	Function	Description	Default value	Link disconnection if register value change
			Bluetooth management		
R	S200	Local Bluetooth address	Local Bluetooth address of the dongle The local BT address is read only.		NO
R/W	S201	Local device name	Device name must be lower or equal than 32 bytes	"Serial Port Device"	YES
R/W	S202	Auto-connect mode	Auto-connect mode : 0 = disable 1 = Auto-connect on reset or power up 2 = Auto-connect on GPIO (DTR)	0	YES
R/W	S203	Remote Bluetooth address	Remote Bluetooth address used with auto-connect mode enabled.	000000000000h	YES
R/W	S204	reconnection management	Reconnection management used with auto-connection mode Send 'NO CARRIER' <cr><lf> in case of no connection 0 : no reconnection N : number of retries (N<>0 and N <>255) 255 : always	255	YES
R/W	S205	Pin code	Pin code of the dongle must equal to 4 digits	0000	YES
R/W	S206	Encryption	Encryption type : '0' = disabled '1' = enabled	0	YES
R/W	S207	Security	Security type : '0' = disabled the pin code demand '1' = enabled the pin code demand	0	YES
R/W	S208	Class of device	0xXXXXXX	000000h	YES



Type	Register	Function	Description	Default value	Link disconnection if register value change
R/W	S210	Baudrate	Serial link rate in bits/s, see Note 1. '4': 9 600 '5': 19 200 '6': 38 400 '7': 57 600 '8': 115 200	8	NO
R/W	S211	Data length	'8' : 8 bits, see Note 1.	8	NO
R/W	S212	Parity	see Note 1. '1' : none '2' : even '3' : odd	1	NO
R/W	S213	Stop bits	see Note 1. '1' : 1 stop bit '2' : 2 stop bit	1	NO
R/W	S214	Command timeout	Time out duration for detecting the A+++ pattern, <b>unit 1/50s (20ms)</b> : from 1 up to 255x50ms.	50	NO
R/W	S215	Flow control	Flow control management : 0 : disable (RTS/CTS management) 1 : enable (RTS/CTS management) Modifying is enable after ATO command which reboot the system.	1	NO
			Protocol		
R/W	S220	Protocol	'1'= SPP '2'= DUN	1	YES
R/W	S230	Low power modes	0 : not used 1 : Hold Mode : very low power and low throughput 2 : Park Mode : low power and medium throughput 3 : Sniff Mode : low power and maximum throughput 4 : User sniff mode (Bluetooth expert only) – use parameters S231..S234	0	YES
R/W	S231	Sniff parameter Max interval	see Note 2. 6..1344 Wake-up duty cycle (Tsniff) – multiply 625us	800	YES

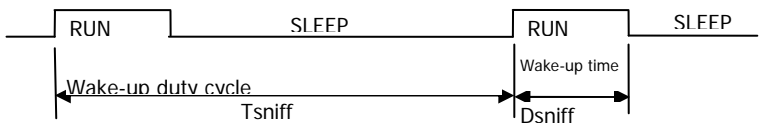
R/W	S232	Sniff parameter Min interval	see Note 2. 0..1342 Sniff offset (Dsniff) – multiply 625us Dsniff must be lower or equal to Tsniff-2	80	YES
R/W	S233	Sniff parameter Attempt	0..672 Number of slots listen by slave during wake-up Sniff parameter attempt must be lower than Tsniff/2	8	YES
R/W	S234	Sniff parameter Timeout	0..40 Number of additional slots listen by slave during wake-up	8	YES

The column “link disconnection if register value change” does not apply if the modification is done remotely (for a slave configured using the SPP CONFIG mode).

#### NOTE 1

when changing the serial link configuration (rate, parity, stop bit...), the answer is done using the old serial link format, the next command must be sent using the new serial format.

#### NOTE 2



## Specifications

Embedded profiles	GAP, SDAP, SPP, DUN
Link set-up and status	Through Hayes commands
Radio rough data rate	723 kbps Bluetooth radio rate bps
UART programmable format	Serial rate from 600 bps to 921 600 bps
UART TTL ports	TD – RD – RTS – CTS (& DTR-DSR-DCD-RI / DUN profile)
Operating-mode	Transparent
RF radiated power	20 dBm (100 mW – Class 1)
Sensitivity	Up to -87 dBm for 10 <sup>-3</sup> /PN9
Operating range (outdoor)	Integrated antenna : up to 150 m
Operating voltage	3,8 to 20 V
Waiting for connection consumption	< 22 mA (All RS232 signals used and connected)
Connected consumption	< 25 mA
Burst transmission consumption (max)	< 380 mA
Transmission consumption	About 60mA (typical value in file transfer)
Operating temperature	-30°C / +70°C
Storage conditions	-45°C / +85°C (10 to 80% HR)
Dimensions	65 x 40 x 25 mm
Standards compliance	EN 300-328 / EN 301 489

### References

**ARF7501A: Bluetooth® Class 1 RS233 DB9 DCE Dongle**  
**ARF7502A: Bluetooth® Class 1 RS233 DB9 DTE Dongle**  
**ARF7503A: Bluetooth® Class 1 RS233 DB15HD DTE Dongle**  
**ARF4013Z: DC Bloc for ARF62 external power supply**  
**205058: DC Bloc ARF62 Ø3.5 µJack adapter**

## Annex 1 : Firmware and document updates

Firmware	Updates
V1.0	Original version

Document	Updates
V1.0	Documents' layout and size
V1.0	Original version