

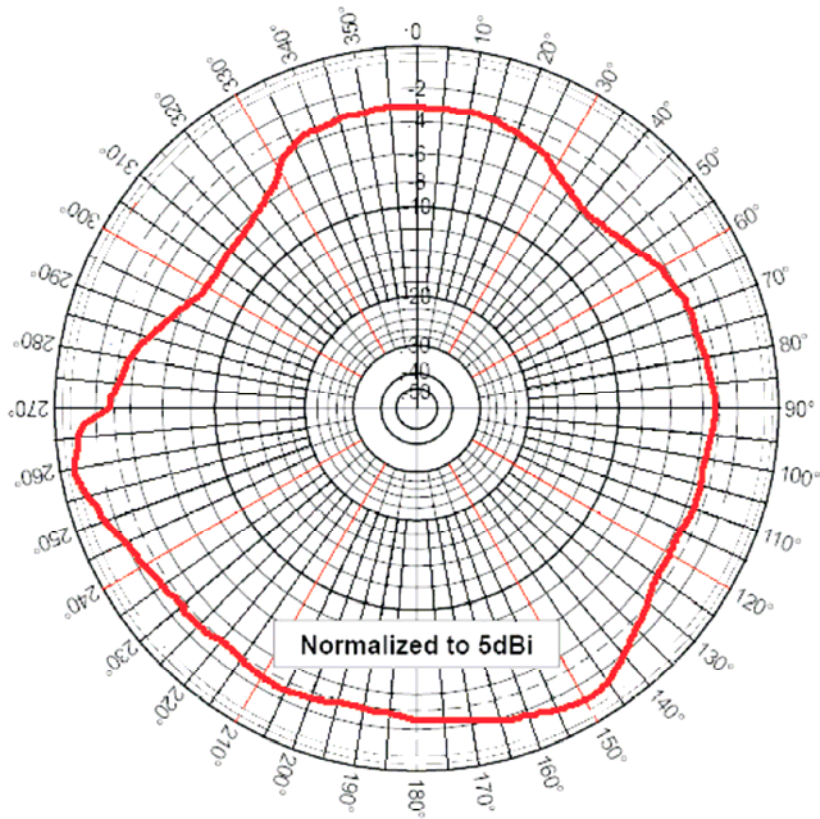
# Malux



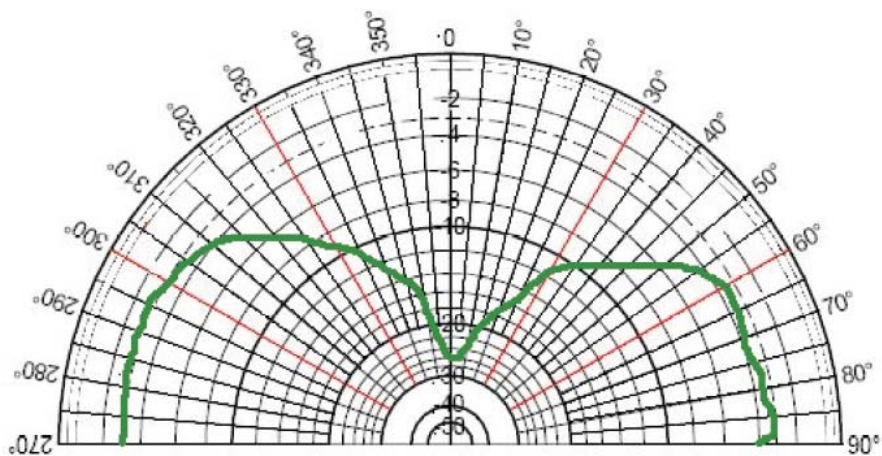
## Technical specification

Frequency	GSM 900 MHz PCN 1800 MHz DCS 1900 MHz WIFI BLUETOOTH 2.4 GHz UMTS 2.1 GHz AMPS 824-894 MHz
Impedance	50 Ohms
Polarization	HORIZONTAL/VERTICAL
Gain	2.14 dBi
VSWR	<1,5/2
Power handling	50W
Cable	2,5 m RG174
Connector	FME/f
Housing size	75X80 mm
Mounting hole	10,5 mm
Mounting	Body mount
Operating temperature	-40°C to +85°C
Material	ABS, POM, PE, stainless steel and brass
<b>Article number</b>	<b>MEA-052</b>

# Malux



Azimuthal Pattern (X, Y or E-Plane)



Elevation Pattern (Z, Y or H-Plane)