

# SEIKO PRECISION INC.

KVE-980703

## STANDARD INVERTERS

art.nr.	75-559-56 OF-I-003 SD005-70-1	75-559-49 OF-E5-65IN SD005-40-1	SD005-10-1
Rated input voltage	+5V DC ± 10%	+5V DC ± 10%	+5V DC ± 10%
Rated current	60 mA (TYP) at 30 nF // 74 kΩ	30 mA (TYP) at 94 nF // 180 kΩ	20 mA (TYP) at 94 nF // 180 kΩ
Output voltage	100V AC ± 15%	80V AC ± 15%	70V AC ± 15%
Output frequency	500 Hz ± 15%	600 Hz ± 15%	500 Hz ± 15%
Usable EL area	70-100 cm <sup>2</sup>	20-50 cm <sup>2</sup>	9-20 cm <sup>2</sup>
Dimension*1 (mm)	22,0 x 22,0 x 21,5	20,5 x 25,5 x 9,5	15,0 x 15,0 x 16,5
Weight**	22,8 g	11,7 g	

\*1. The specification from the supplier does not contain tolerance.

\*2. The specification from the supplier does not contain weight, therefore we give you our actual measurement result.



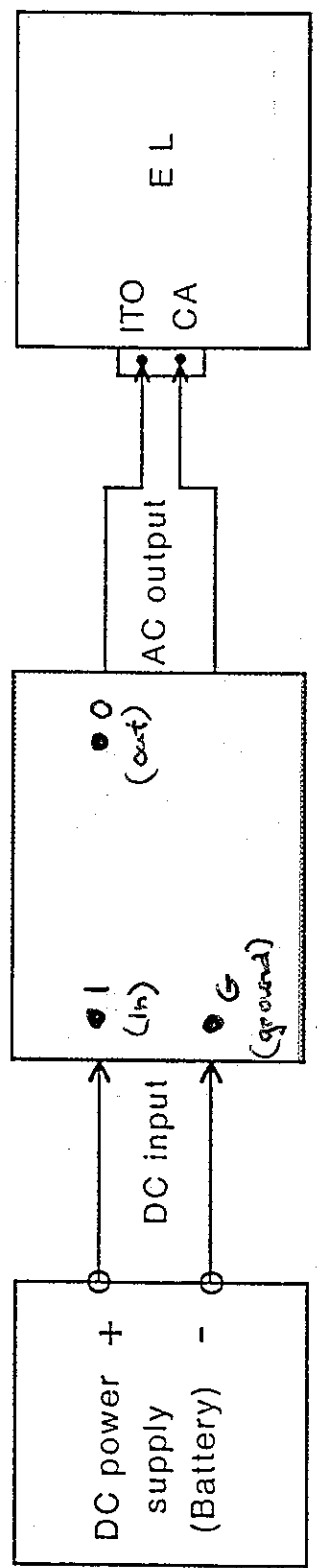
**KVARTSELEKTRONIK AB**

Box 8233, S-163 08 SPÅNGA, SWEDEN

Tel: 08-564 70 800, Fax: 08-760 09 91

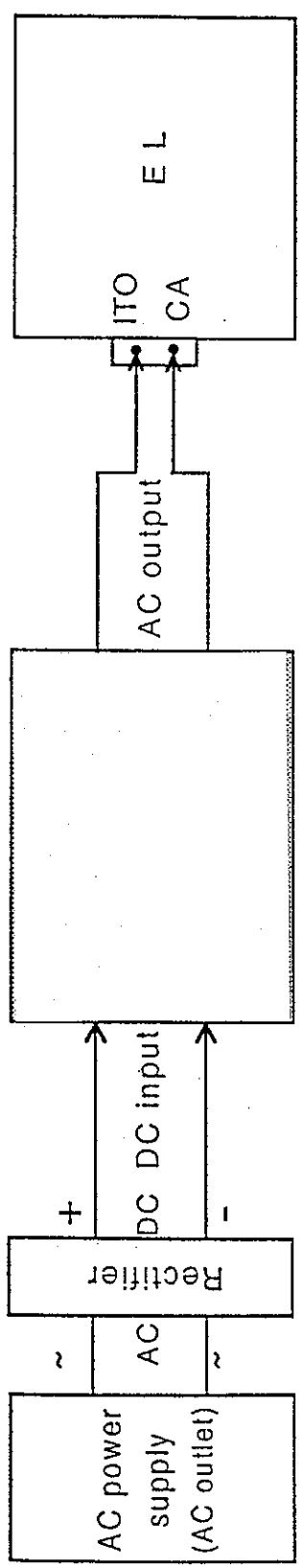
# Power supply, Inverter, EL

(1) In case of DC power supply



OBS! Ground of inverter for in/out

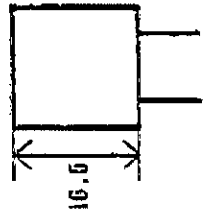
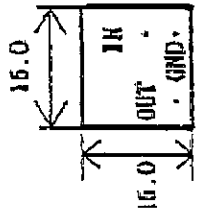
(2) In case of AC power supply



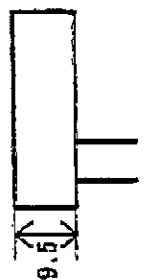
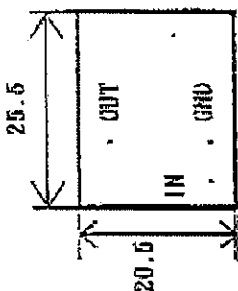
*Handwritten scribbles at the top of the page.*

TENTATIVE  
ELECTRONIC DATA SHEET

SD005-10-1

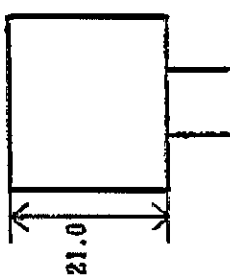
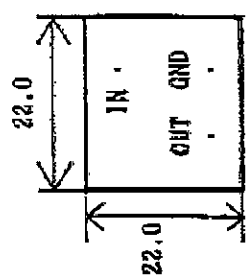


SD005-40-1



75-559-49

SD005-70-1



75-559-56

MODEL

DIMENSIONS  
(mm)

