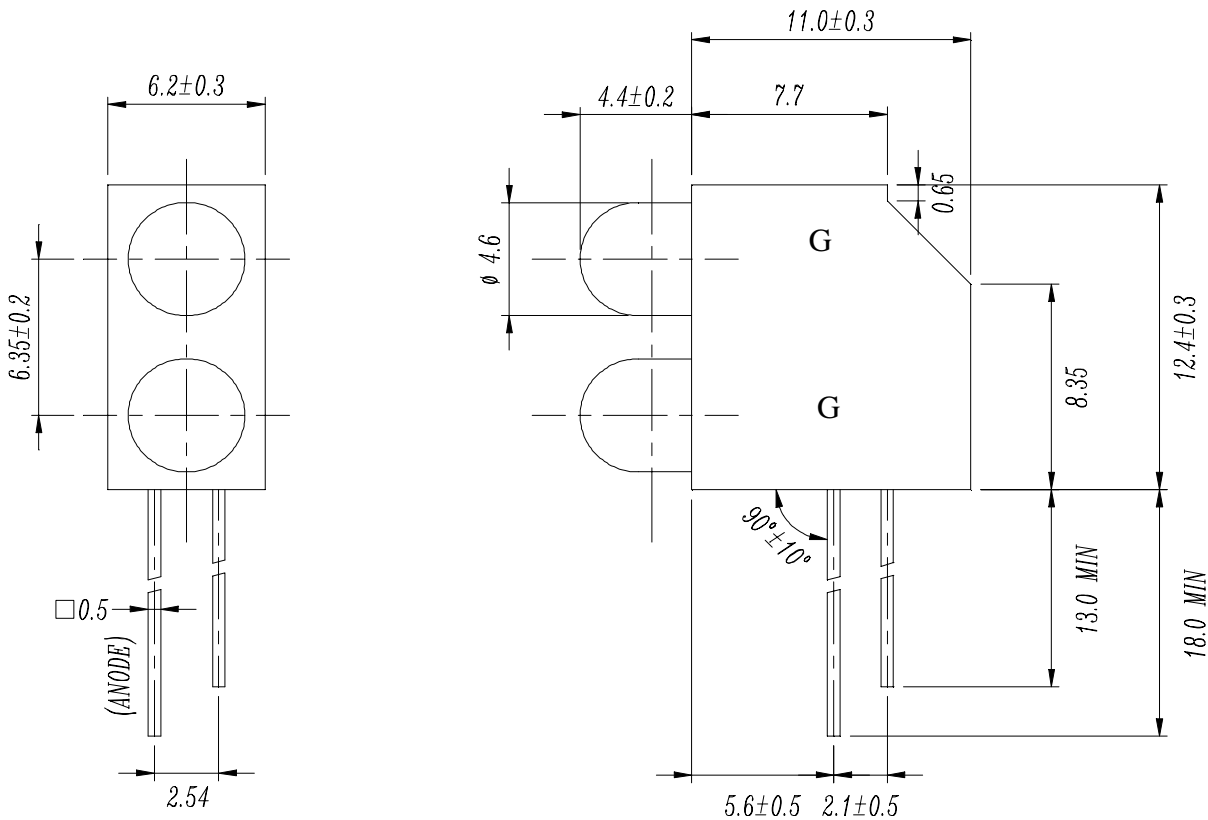




■ Package Dimensions:



■ Notes:

- 1.All dimensions are in millimeters, tolerance is 0.25mm except being specified
- 2.Lead spacing is measured where the lead emerge from the package

LED PART NO.	Chip		Lens Color
	Material	Emitted Color	
1303GD	GaP	Green	Green Diffused
1303GD	GaP	Green	Green Diffused

Office : 7C Building, Lian Hua Port Industrial District, Lian Hua Shan
 Bonded Pricessing Zone Pan Yu, Guang Zhou, China
 TEL : (020)84860913,84860914
 FAX : (020)84860600
 http : //www.everlight.com



Device Number : CDAE-059-023 REV: 1

PART NO. : A593B/2G ECN : Page: 2 / 6

■ Descriptions:

- 1.ARRAY=Plastic Holder+Combinations of Lamps
- 2.The array will easily mount the applicable lamps on any panel up to

■ Features:

- 1.Low power consumption
- 2.High efficiency and low cost
- 3.Good control and free combinations on the colors of LED lamps
- 5.Good lock and easy to assembly
- 6.Stackable and easy to assembly
- 7.Stackable vertically and easy to assembly
- 8.Versatile mounting on P.C board or panel
- 9.Stackable horizontally and easy to assembly

■ Applications:

- 1.Used as indicators of indicating the Degree, Functions, Positions etc, in electronic instruments.

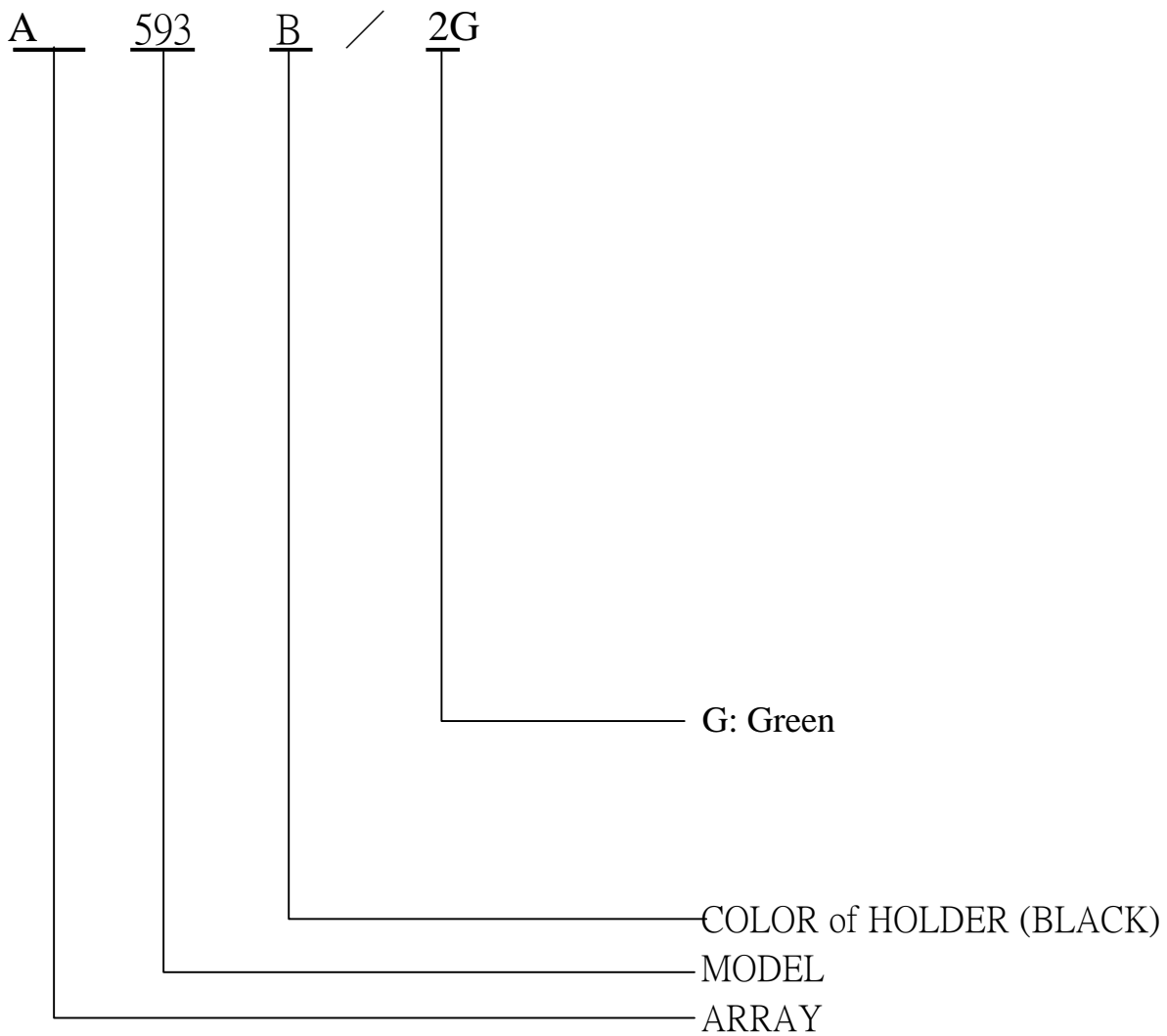


EVERLIGHT ELECTRONICS CO.,LTD.

Device Number : CDAE-059-023 REV.: 1

PART NO. : A593B/2G ECN : Page: 3 / 6

■ LED LAMP ARRAYS selection guide:



Device Number : CDAE-059-023 REV.: 1PART NO. : A593B/2G ECN : Page: 4 / 6

Absolute Maximum Ratings at Ta = 25°C

Parameter	Symbol	Rating	Unit
Forward Current	I _F	30	mA
Operating Temperature	T _{opr}	-40 to +85	°C
Storage Temperature	T _{stg}	-40 to +100	°C
Soldering Temperature	T _{sol}	260 ± 5	°C
Power Dissipation	P _d	100	mW
Peak Forward Current(Duty 1/10 @ 1KHz)	I _F (Peak)	160	mA
Reverse Voltage	V _R	5	V

Electronic Optical Characteristics :

Parameter	Symbol	Min.	Typ.	Max.	Unit	Condition
Luminous Intensity	I _v	2.00	5.00	/	mcd	I _F = 10 mA
Viewing Angle	2θ 1/2	/	45	/	deg	I _F = 20 mA
Peak Wavelength	λ _p	/	565	/	nm	I _F = 20 mA
Dominant Wavelength	λ _d	/	570	/	nm	I _F = 20 mA
Spectrum Radiation Bandwidth	Δλ	/	30	/	nm	I _F = 20 mA
Forward Voltage	V _F	1.70	2.10	2.40	V	I _F = 20 mA
Reverse Current	I _R	/	/	10	μA	V _R = 5 V



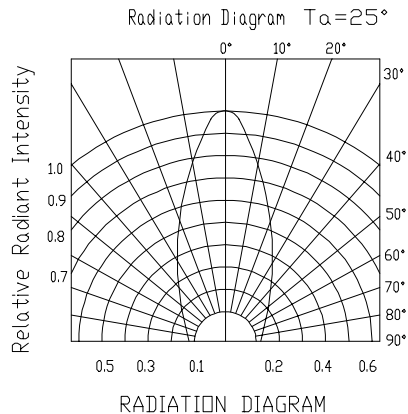
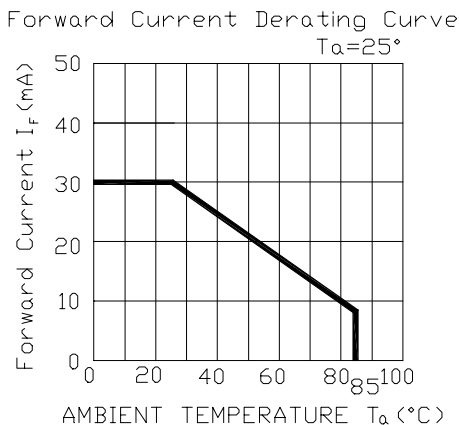
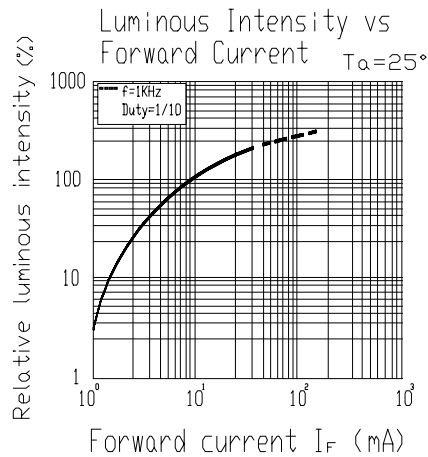
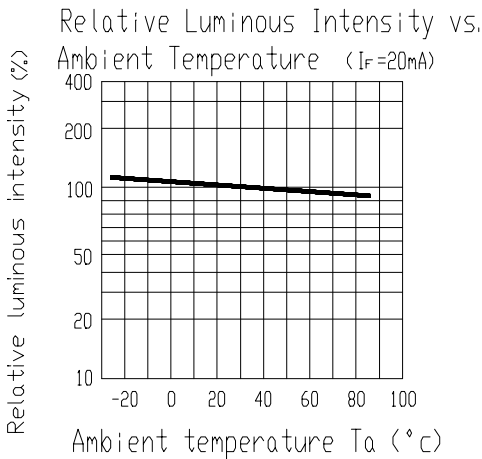
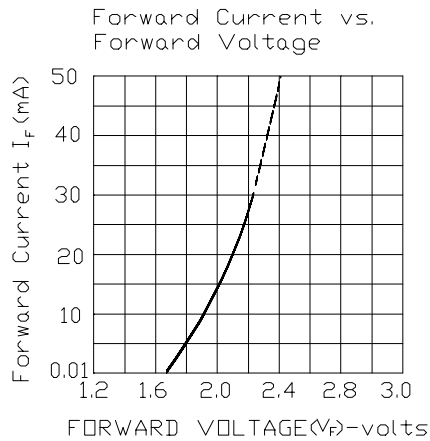
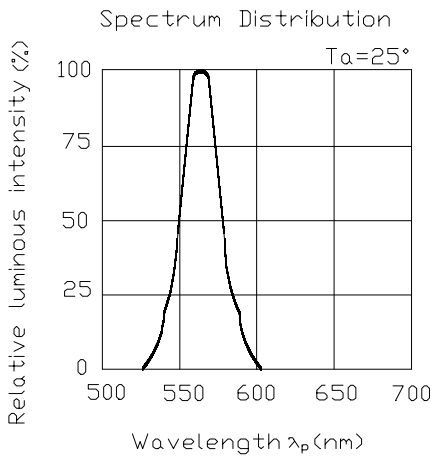
EVERLIGHT ELECTRONICS CO.,LTD.

Device Number : CDAE-059-023 REV.: 1

PART NO. : A593B/2G ECN : _____ Page: 5 / 6

Typical Electro-Optical Characteristic Curves:

(G)





EVERLIGHT ELECTRONICS CO.,LTD.

Device Number : CDAE-059-023 REV.: 1

PART NO. : A593B/2G ECN : Page: 6 / 6

■ Reliability test items and conditions

NO	Item	Test Conditions	Test Hours/Cycle	Sample Size	Ac/Re
1	Solder Heat	TEMP : 260°C ± 5 °C	5 SEC	76 PCS	0/1
2	Temperature Cycle	H : +85°C 30min ∫ 5 min L : -55°C 30min	50 CYCLES	76 PCS	0/1
3	Thermal Shock	H : +100°C 5min ∫ 10 sec L : -10°C 5min	50 CYCLES	76 PCS	0/1
4	High Temperature Storage	TEMP : 100°C	1000 HRS	76 PCS	0/1
5	Low Temperature Storage	TEMP : -55°C	1000 HRS	76 PCS	0/1
6	DC Operating Life	TEMP : 25°C IF = 20 mA	1000 HRS	76 PCS	0/1
7	High Temperature / High Humidity	85°C/85% RH	1000 HRS	76 PCS	0/1