



1.9mm Round Subminiature , “Gull Wing” Lead Infrared LED

MODEL NO : SIR91-21C/F7

■ Features :

- Small double-end package
- Low forward voltage
- View angle 20°
- Peak wavelength $\lambda_p=875\text{nm}$
- High reliability

■ Description :

- SIR91-21C/F7 is an infrared emitting diode in miniature SMD package which is molded in a water clear plastic with spherical top view lens. The spectrally device is matched with silicon photodiode and phototransistor.

■ Applications :

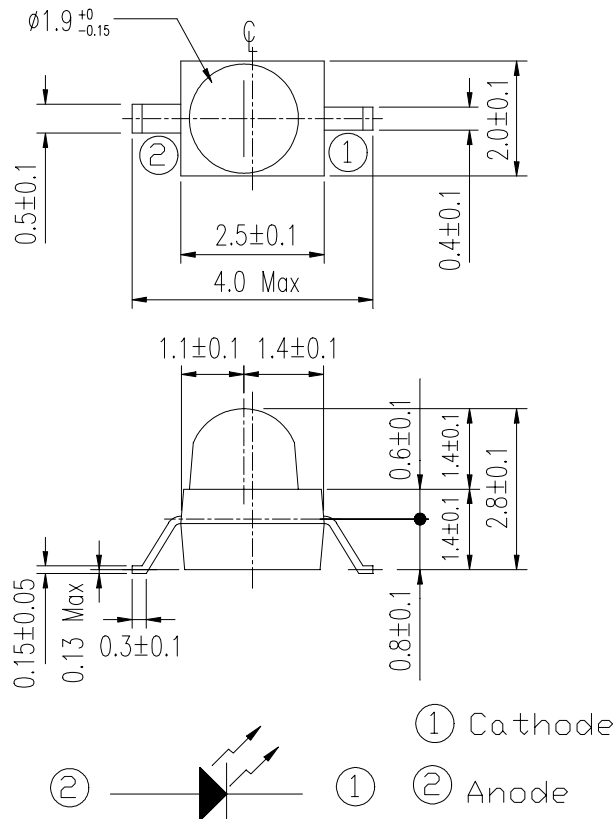
- Floppy disk drive
- Optoelectronic switch
- Smoke detector
- Camera
- VCR
- Video

PART NO.	CHIP	LENS COLOR
	MATERIAL	
SIR	GaAlAs	Water Clear

1.9mm Round Subminiature , “Gull Wing” Lead Infrared LED

MODEL NO : SIR91-21C/F7

■ Package Dimensions :



■ Notes :

- All dimensions are in millimeter.
- General Tolerance: ± 0.1 mm
- Lens color : Water clear.
- Above specification may be changed without notice. EVERLIGHT will reserve authority on material change for above specification.
- These specification sheets include materials protected under copyright of EVERLIGHT corporation . Please don't reproduce or cause anyone to reproduce them without EVERLIGHT's consent.
- When using this product , please observe the absolute maximum ratings and the instructions for use outlined in these specification sheets. EVERLIGHT assumes no responsibility for any damage resulting from use of the product which does not comply with the absolute maximum ratings and the instructions included in these specification sheets.



1.9mm Round Subminiature , “Gull Wing” Lead Infrared LED

MODEL NO : SIR91-21C/F7

■ Absolute Maximum Ratings at T_A = 25°C

Parameter	Symbol	Rating	Unit	Notice
Continuous Forward Current	I _F	65	mA	
Peak Forward Current Pulse width=100 μs,Duty cycle=1%	I _{FP}	1.0	A	
Reverse Voltage	V _R	5	V	
Operating Temperature	Topr	-25 ~ +85	°C	
Storage Temperature	Tstg	-40 ~ +85	°C	
Soldering Temperature	Tsol	260	°C	
Power Dissipation at(or below) 25°C Free Air Temperature	Pd	130	mW	

■ Electronic Optical Characteristics :

Parameter	Symbol	Min.	Typ.	Max.	Unit	Condition
Radiant Intensity	Ee	3.5	5.0	----	mW/sr	I _F =20mA
		----	20	----		I _F =100mA,tp=100 μs, t _p /T=0.01
		----	200	----		I _F =1A,tp=100 μs, t _p /T=0.01
Peak Wavelength	λ _p	----	875	----	nm	I _F =20mA
Spectral Bandwidth	Δλ	----	80	----	nm	I _F =20mA
Forward Voltage	V _F	----	1.3	1.6	V	I _F =20mA
		----	1.4	1.8		I _F =100mA,tp=100 μs, t _p /T=0.01
		----	2.6	4.0		I _F =1A,tp=100 μs, t _p /T=0.01
Reverse Current	I _R	----		10	μA	V _R =5V
View Angle	2θ1/2	----	20	----	deg	I _F =20mA



1.9mm Round Subminiature , “Gull Wing” Lead Infrared LED

MODEL NO : SIR91-21C/F7

■ Typical Electrical/Optical/Characteristics Curves

Fig. 1 Forward Current vs. Ambient Temperature

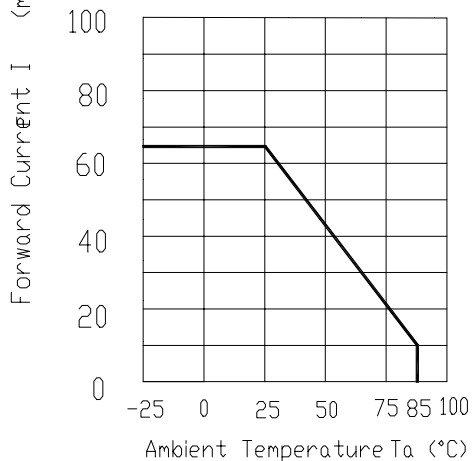


Fig. 2 Spectral Distribution

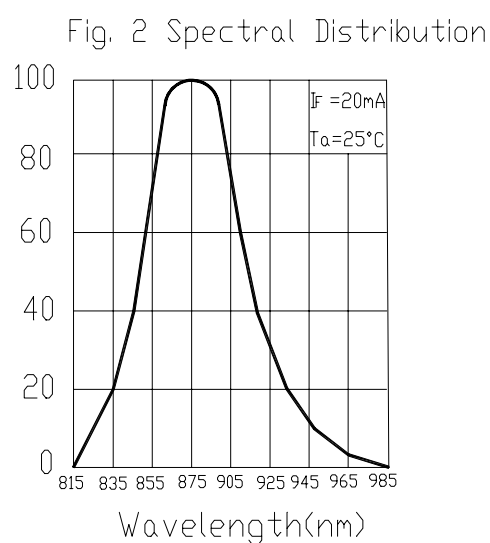


Fig. 3 Peak Emission Wavelength vs. Ambient Temperature

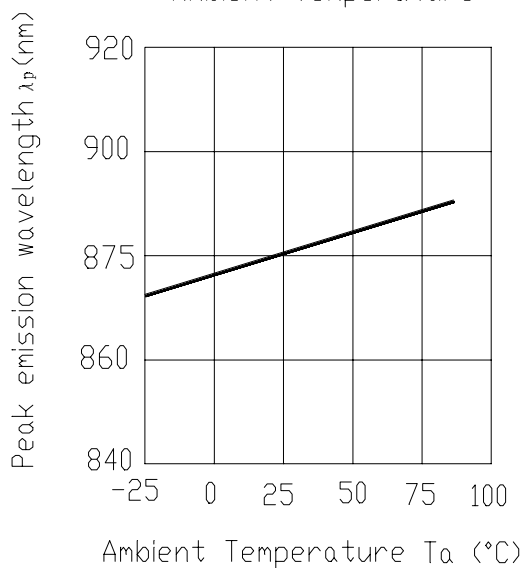
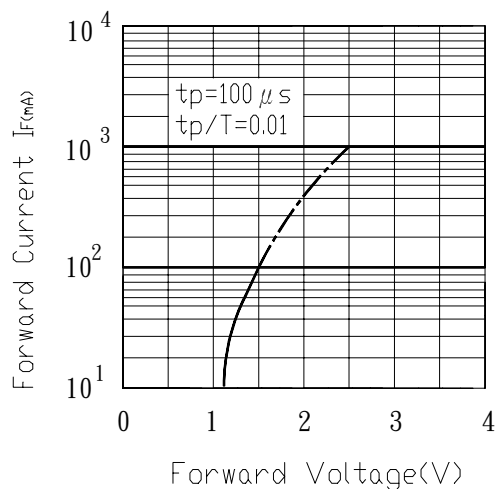


Fig. 4 Forward Current vs. Forward Voltage





1.9mm Round Subminiature , “Gull Wing” Lead Infrared LED

MODEL NO : SIR91-21C/F7

■ Typical Electrical/Optical/Characteristics Curves

Fig. 5 Relative Intensity vs. Forward Current

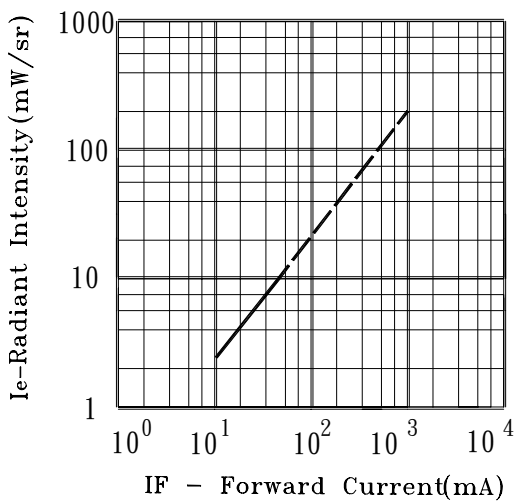


Fig. 6 Relative Radiant Intensity vs. Angular Displacement

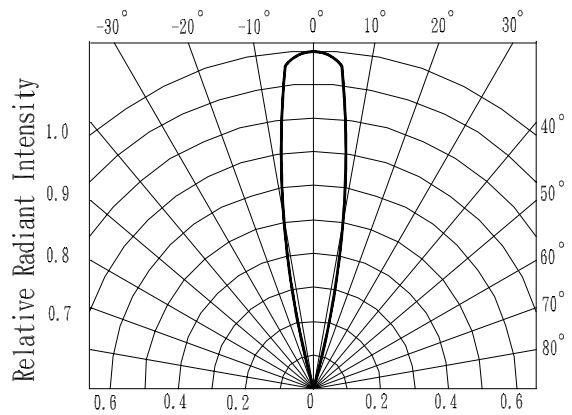


Fig. 7 Relative Intensity vs. Ambient Temperature (°C)

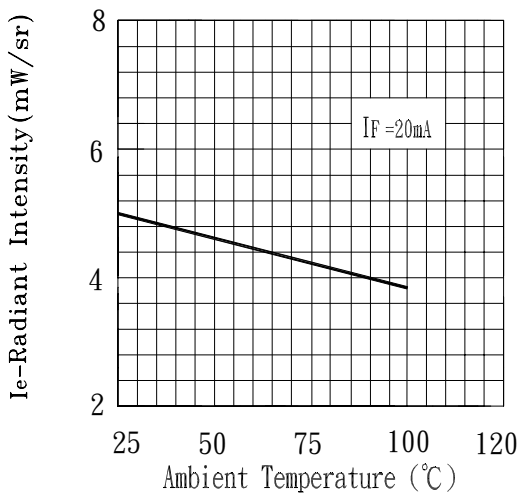
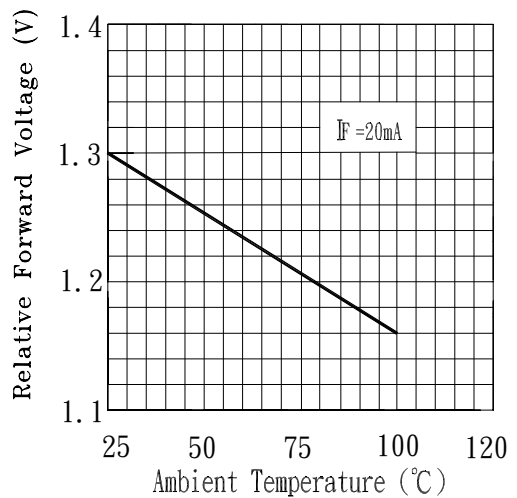


Fig. 8 Forward Current vs. Ambient Temperature (°C)





EVERLIGHT ELECTRONICS CO., LTD.

DEVICE NUMBER : DIS-091-065 REV : 1.0
ECN : _____ PAGE : 6/8

1.9mm Round Subminiature , “Gull Wing” Lead Infrared LED

MODEL NO : SIR91-21C/F7

■ Reliability Test Item And Condition

The reliability of products shall be satisfied with items listed below.

Confidence level:90%

LTPD:10%

NO.	Item	Test Conditions	Test Hours/ Cycles	Sample Size	Failure Judgement Criteria	Ac/Re
1	REFLOW	TEMP : 240°C ± 5 °C 5 secs	6 Mins	22 pcs	More than 90% of lead to be covered by soldering	0/1
2	Temperature Cycle	H : +85°C 30 mins ↑ 5 mins ↓ L : -55°C 30 mins	50 cycles	22 pcs	$I_R \geq U \times 2$ $E_e \leq L \times 0.8$ $V_F \geq U \times 1.2$	0/1
3	Thermal Shock	H : +100°C 5 mins ↑ 10 secs ↓ L : -10°C 5 mins	50 cycles	22 pcs	U :Upper specification limit L :Lower specification limit	0/1
4	High Temperature Storage	TEMP. : +100°C	1000 hrs	22 pcs		0/1
5	Low Temperature Storage	TEMP. : -55°C	1000 hrs	22 pcs		0/1
6	DC Operating Life	$I_F = 20\text{mA}$	1000 hrs	22 pcs		0/1
7	High Temperature / High Humidity	85°C / 85% R.H.	1000 hrs	22 pcs		0/1



1.9mm Round Subminiature , “Gull Wing” Lead Infrared LED

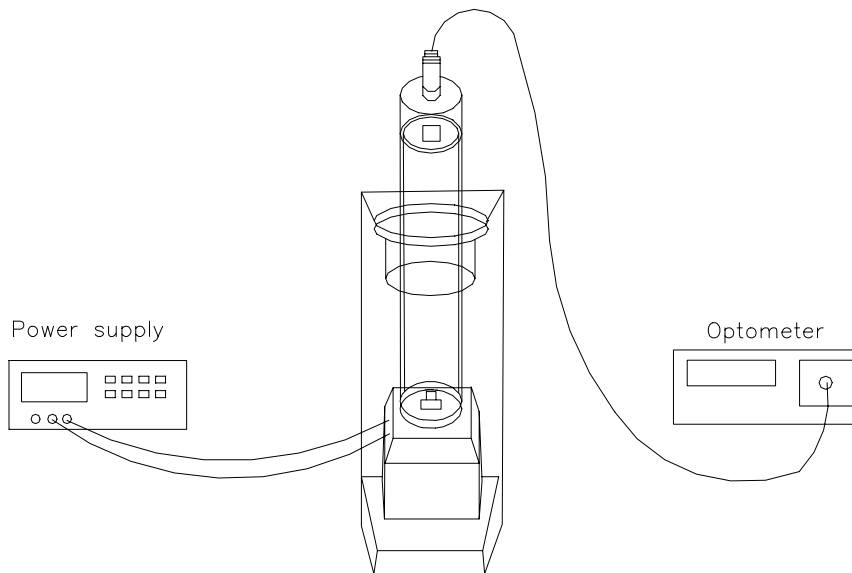
MODEL NO : SIR91-21C/F7

■ **Test Method For Power :**

Condition : $I_F=20$ mA

Test Item : Radiant Intensity

Unit : mW/sr





EVERLIGHT ELECTRONICS CO., LTD.

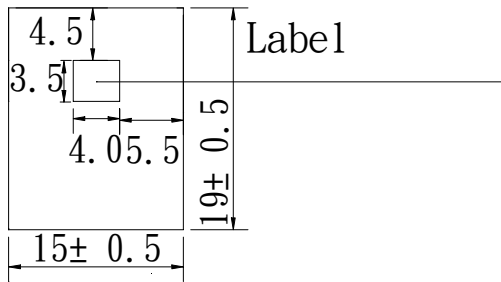
DEVICE NUMBER : DIS-091-065 REV : 1.0
ECN : _____ PAGE : 8/8

1.9mm Round Subminiature , "Gull Wing" Lead Infrared LED

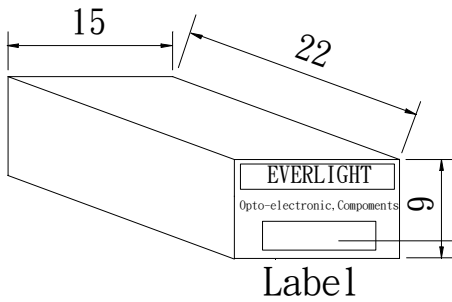
MODEL NO : SIR91-21C/F7

■ Packing Specifications

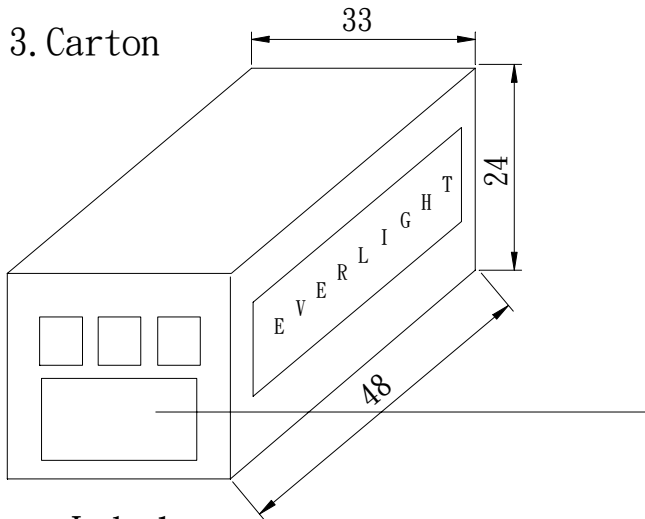
1. Bag



2. Box



3. Carton



Label

UNIT : cm



CPN:

P/N:



SIR91-21C/F7

QTY:

CAT:

HUE:

REF:

LOT NO:



MADE IN TAIWAN

CPN : Customer's Production Number

P/N : Production Number

QTY : Packing Quantity

CAT : Ranks

HUE : Peak Wavelength

REF : Reference

LOT NO : Lot Number

MADE IN TAIWAN : Production place

■ Packing Quantity Specification

1.1000 Pcs/1Bag , 20 Bags/1Box

2.10Boxes/1Carton