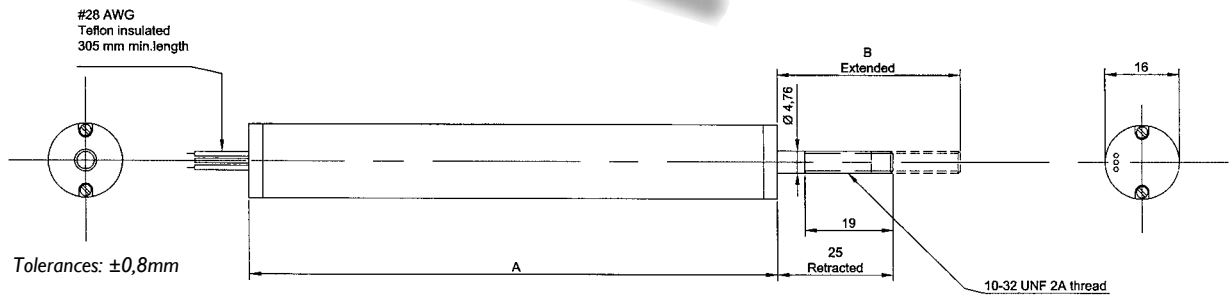


600-series

Linear sensor 25-305 mm



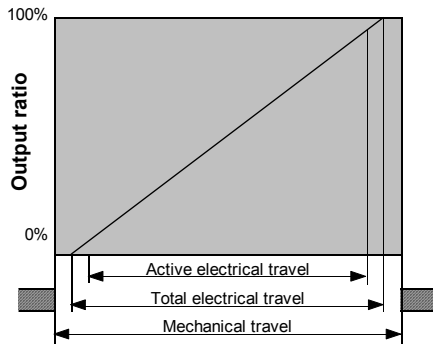
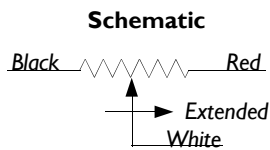
The Duncan 600 series provides an extremely accurate method of position sensing in applications that require a rugged instrument operating in a tight area. Its long life, infinite resolution, and very smooth output deliver high reliability in critical measurements. Seven models provide a choice of electrical travel from 25 mm to 305 mm and include a floating shaft design to accommodate shaft/interface connecting misalignments. Accessories for the 600 series include a rod end bearing and mounting bracket.



Specifications:

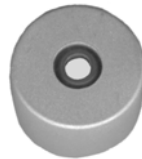
- Power rating at 70°C** 0,25 W
..... per inch of electrical travel derated to 0 W at 125°C
- Output smoothness** 0,1%
- Resolution** Infinite
- Insulation resistance at 500 VDC** 1000 MΩ
- Dielectric strength** 500 VDC
- Temperature range** -55°C - +125°C
- Actuation force** 0,56 N
- Repeatability** Within 0,013 mm
- Life** 10 x 10⁶ Cycles
- Shaft alignment** Up to 0,25 mm
- Recommended input impedance** 100 x R

Note: Most specifications may be altered to meet specific requirements.



Note: For travel outside the active electrical travel, linearity may exceed specified tolerances.

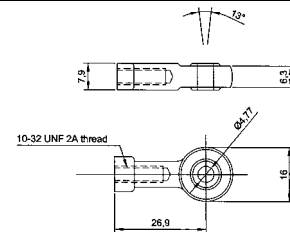
Front end sealing



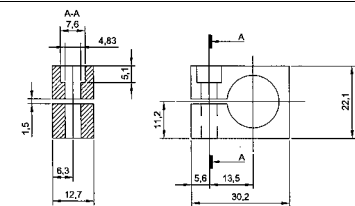
Diameter 22,0 mm
Length 15,0 mm

Aluminium front with sealing. To be glued.

Rod end bearing, 600-52



Mounting bracket, 600-51



Model	601	602	603	604	606	610	612
Total electrical travel (mm)	25	51	76	102	152	254	305
Active electrical travel (mm)	23	48	74	99	150	251	302
Mechanical travel (mm)	28	53	79	104	155	257	307
Resistance (R) ±20%(KW)	1,00	2,00	3,00	4,00	6,00	10,00	12,00
Linearity over active travel (± %)	0,70	0,35	0,25	0,15	0,12	0,09	0,08
Case dimensions "A" (mm)	57	89	114	140	190	292	343
Max supply voltage at 70°C (V)	14	28	40	40	40	40	40



Specifications subject to change without notice.

E 02.1011

