

9600 series

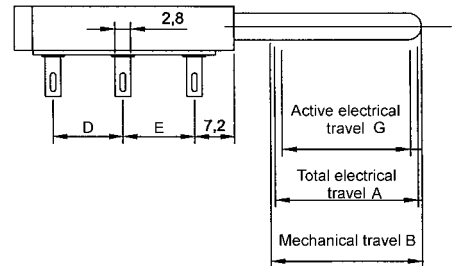
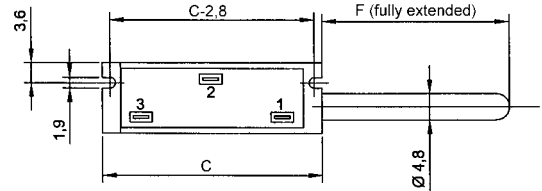
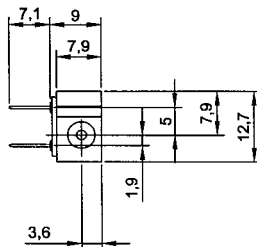
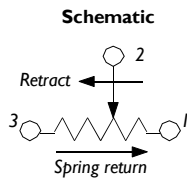
Linear sensor 12-38 mm



Designed for a variety of miniature-sized accurate position feedback applications, the Duncan 9600 Series Linear Position Sensor Module is ideally suited for use where reliability in a harsh operating environment is a primary consideration.

Use in industrial, vehicular, appliance, machine tool, and robotic applications is benefited by the unit's features that include high temperature-stable materials, solderable terminal tabs suitable for use with 2,8 mm PDQ styled crimped wiring lugs, and a durable spring-loaded design to returns shaft to extended position.

The 9600 Series is available in three standard strokes and provides excellent long life (up to 5 000 000 cycles); resistance, voltage and linearity characteristics.

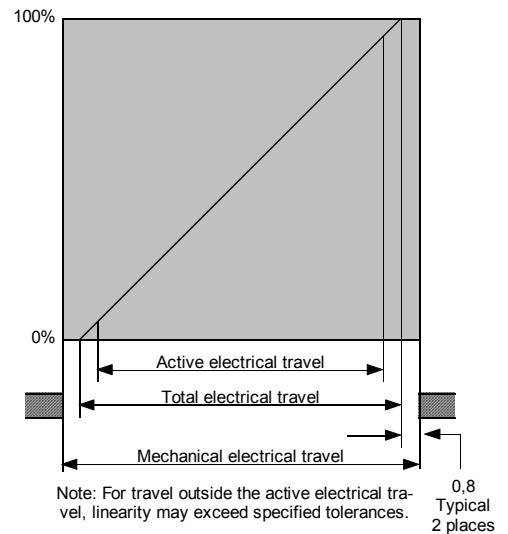


Specifications*

Model	9605	9610	9615
Total electrical travel, A (mm)	12,7	25,4	38,1
Active electrical travel G (mm)	10,0	22,8	35,6
Mechanical travel, B ±0,4 (mm)	14,2	26,9	39,6
Total DC resistance ±25%(kΩ)	1,7	3,4	5,1
Linearity over active travel (± %)	±2,0	±2,0	±2,0
Best practical linearity (%)	±1,0	±0,5	±0,35
Power rating at 70°C (W)	0,25	0,5	0,75
Max supply voltage at 70 °C (V)	18	35	40
Housing length C ±0,4 (mm)	26,9	39,6	52,3
Terminal spacing D (mm)	7,6	12,7	20,3
E (mm)	5,1	12,7	17,8
Fully extended length F ±0,4 (mm)	20,6	33,3	46,0
Repeatability	Within 0,013 mm		
Mechanical life	Up to 5 000 000 Cycles		
Stop strength (N)	100		
Actuation force (N)	4,0 Maximum, supplied with internal spring to return actuator to extended position		
Humidity	95% @ 38°C		
Vibration	15 Gs, 50 to 1000Hz, 2hrs, each plane		
Shock	Up to 50 Gs		
Temperature range	-40°C - +135°C		
Recommended input impedance	100 x sensor resistance		

*Most specifications may be altered to meet specific requirements

Specifications subject to change without notice



E 02.1111

