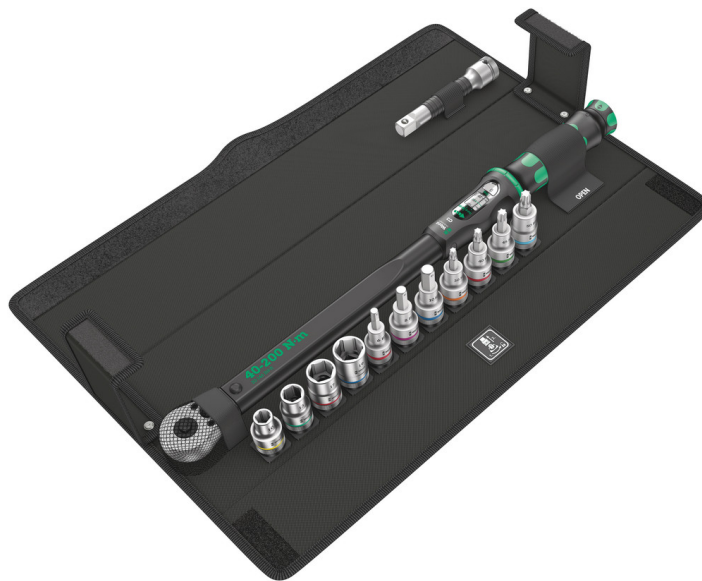


## Click-Torque C 3 Set 1, 40-200 Nm, 13 pieces

Click-Torque torque wrenches with reversible ratchet



**EAN:** 4013288207609  
**Part number:** 05075680001  
**Article number:** Click-Torque C 3 Set 1

**Size:** 545x132x95 mm  
**Weight:** 3436 g  
**Country of origin:** CZ  
**Customs tariff number:** 82041200



- 13-piece wrench set for torque control applications
- Easy setting and saving of the desired torque value with audible and tactile click when the scale value is reached (click 1)
- Safely quantified force: when the set value is reached, the torque wrench triggers audibly and noticeably (click 2)
- Robust surface-protecting, compact, textile box
- 1/2"-square. Measuring range: 40-200Nm; Precise to +/- 3% as per DIN EN ISO 6789-1:2017-07

### Web link

[https://products.wera.de/en/torque\\_tools\\_series\\_click-torque\\_wrenches\\_click-torque\\_torque\\_wrenches\\_with\\_reversible\\_ratchet\\_click-torque\\_c\\_3\\_set\\_1.html](https://products.wera.de/en/torque_tools_series_click-torque_wrenches_click-torque_torque_wrenches_with_reversible_ratchet_click-torque_c_3_set_1.html)

Wera - Click-Torque C 3 Set 1  
05075680001 - 4013288207609

Wera Werkzeuge GmbH  
Korzter Straße 21-25  
D-42349 Wuppertal  
Tel: +49 (0)2 02 / 40 45-0  
E-Mail: [info@wera.de](mailto:info@wera.de)

## Click-Torque C 3 Set 1, 40-200 Nm, 13 pieces

### Click-Torque torque wrenches with reversible ratchet



Click torque wrench set in the unmistakable Wera design. Very robust design with high accuracy as per DIN EN ISO 6789-1: 2017-07. Easy setting and saving of the default values. The audible and tactile snapping on reaching the scale values also facilitates the safe setting of the desired torque values. The robust release mechanism guarantees a clearly audible and tactile trigger signal when the set torque is reached. For clockwise torque-control and with reversible 45-tooth ratchet. Torque wrenches and torque-compatible accessories are packed in an extremely space-saving, robust, surface-friendly textile box. Contains: Click Torque C 3, 1/2", 40 - 200 Nm, 4 sockets with 1/2" drive, 7 hex plus hexagon socket and TORX® bit sockets plus extension.

#### Web link

[https://products.wera.de/en/torque\\_tools\\_series\\_click-torque\\_wrenches\\_click-torque\\_torque\\_wrenches\\_with\\_reversible\\_ratchet\\_click-torque\\_c\\_3\\_set\\_1.html](https://products.wera.de/en/torque_tools_series_click-torque_wrenches_click-torque_torque_wrenches_with_reversible_ratchet_click-torque_c_3_set_1.html)

Wera - Click-Torque C 3 Set 1  
05075680001 - 4013288207609


Wera Werkzeuge GmbH  
Korzter Straße 21-25  
D-42349 Wuppertal  
Tel: +49 (0)2 02 / 40 45-0  
E-Mail: [info@wera.de](mailto:info@wera.de)


# Click-Torque C 3 Set 1, 40-200 Nm, 13 pieces





Click-Torque torque wrenches with reversible ratchet


## Set contents:

 **Click-Torque C 3**  
05075622001 1 x 1/2" x 40-200 Nm

 **8790 HMC**  
05003601001 1 x 10 x 37 mm  
05003604001 1 x 13 x 37 mm  
05003608001 1 x 17 x 37 mm  
05003610001 1 x 19 x 37 mm

 **8767 C HF**  
05003833001 1 x TX 30 x 60 mm  
05003834001 1 x TX 40 x 60 mm  
05003835001 1 x TX 45 x 60 mm  
05003836001 1 x TX 50 x 60 mm

 **8740 C HF**  
05003822001 1 x 6 x 60 mm  
05003824001 1 x 8 x 60 mm  
05003825001 1 x 10 x 60 mm

 **8794 SC**  
05003637001 1 x 1/2" x 125 mm

## Click-Torque Wrench series

## Exact

## Simple and safe

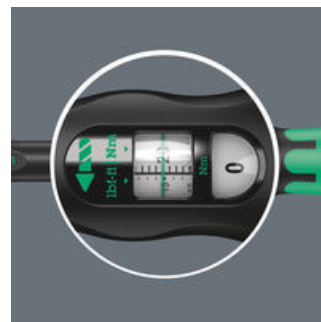
## Simple setting



Click torque wrench in unmistakable Wera design.



Precise to  $\pm 3\%$  as per DIN EN ISO 6789-1:2017-07.



Easy setting and saving of the desired torque value; readable on the main and fine scales.



With audible and tactile clicks when adjusting the scale values.

## Web link

[https://products.wera.de/en/torque\\_tools\\_series\\_click-torque\\_wrenches\\_click-torque\\_torque\\_wrenches\\_with\\_reversible\\_ratchet\\_click-torque\\_c\\_3\\_set\\_1.html](https://products.wera.de/en/torque_tools_series_click-torque_wrenches_click-torque_torque_wrenches_with_reversible_ratchet_click-torque_c_3_set_1.html)

Wera - Click-Torque C 3 Set 1  
05075680001 - 4013288207609

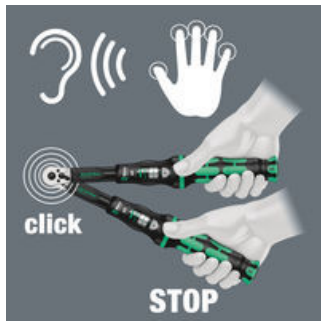
Wera Werkzeuge GmbH  
Korzter Straße 21-25  
D-42349 Wuppertal  
Tel: +49 (0)2 02 / 40 45-0  
E-Mail: info@wera.de

## Click-Torque C 3 Set 1, 40-200 Nm, 13 pieces

Click-Torque torque wrenches with reversible ratchet



### Release mechanism



When the set torque value is reached, an audible and tactile mechanism triggers.

### Bit sockets with retaining function for hexagon socket screws



The clamping of the screw is achieved by a flexible locking ball. The holding function is especially helpful in confined, hard-to-reach spaces, where there is no room for a second hand to secure the screw.

### Bit sockets with holding function for TORX® screws



The HF tools developed by Wera are ideal because they feature an optimised geometry of the original TORX® profile. The wedging forces resulting from the surface pressure between the drive tip and the screw profile mean that TORX® screws made according to Acument Intellectual Properties specifications are securely held on the tool!

### In robust textile box



Robust surface-protecting, compact, textile box

### Web link

[https://products.wera.de/en/torque\\_tools\\_series\\_click-torque\\_wrenches\\_click-torque\\_torque\\_wrenches\\_with\\_reversible\\_ratchet\\_click-torque\\_c\\_3\\_set\\_1.html](https://products.wera.de/en/torque_tools_series_click-torque_wrenches_click-torque_torque_wrenches_with_reversible_ratchet_click-torque_c_3_set_1.html)

Wera - Click-Torque C 3 Set 1  
05075680001 - 4013288207609

Wera Werkzeuge GmbH  
Korzter Straße 21-25  
D-42349 Wuppertal  
Tel: +49 (0)2 02 / 40 45-0  
E-Mail: [info@wera.de](mailto:info@wera.de)