

Click-Torque C 2 torque wrench with reversible ratchet, 20-100 Nm, 1/2" x 20-100 Nm

Click-Torque torque wrenches with reversible ratchet



EAN:	4013288193223	Size:	460x60x60 mm
Part number:	05075621001	Weight:	1240 g
Article number:	Click-Torque C 2	Country of origin:	TW
		Customs tariff number:	82041100

- With 1/2" square drive, reversible ratchet, 45 teeth
- Easy setting and saving of the desired torque value with audible and tactile clicks when reaching the scale values
- Audible and tactile release mechanism when the set torque value is reached
- Measuring range: 20-100 Nm; Precise to +/- 3% as per DIN EN ISO 6789-1:2017-07
- Very robust design with ergonomic 2-component handle suitable for right-hand use

Click-Torque wrench in the unmistakable, robust Wera design with high accuracy as per DIN EN ISO 6789-1: 2017-07. Easy setting and saving of the default value. The audible and tactile clicks on reaching the scale values also facilitate the safe setting of the desired torque value. The robust release mechanism guarantees a clearly audible and tactile release signal when the set torque is reached. For right-hand use (clockwise torque-control) and with 45-tooth reversible ratchet mechanism.

Web link

https://products.wera.de/en/torque_tools_series_click-torque_wrenches_click-torque_torque_wrenches_with_reversible_ratchet_click-torque_c_2.html

Wera - Click-Torque C 2
05075621001 - 4013288193223

Wera Werkzeuge GmbH
Korzter Straße 21-25
D-42349 Wuppertal
Tel: +49 (0)2 02 / 40 45-0
E-Mail: info@wera.de

Click-Torque C 2 torque wrench with reversible ratchet, 20-100 Nm, 1/2" x 20-100 Nm



Click-Torque torque wrenches with reversible ratchet

Click-Torque Wrench series

Exact

Simple and safe



Click-Torque Wrench series



We wanted working with torque wrenches to be simple and accurate which is why we developed the Click-Torque wrenches. With the ability to set and save the default values and with the unmistakable, robust Wera design, these torque wrenches are the ideal tools for all bolting applications that require torque-controlled tightening (clockwise torque wrenches) and tightening and loosening (torque wrenches for insert tools).



Precise to ± 3% as per DIN EN ISO 6789-1:2017-07.



Easy setting and saving of the desired torque value; readable on the main and fine scales.

Simple setting

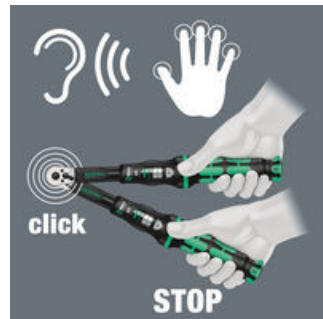
Release mechanism

For right-handed use

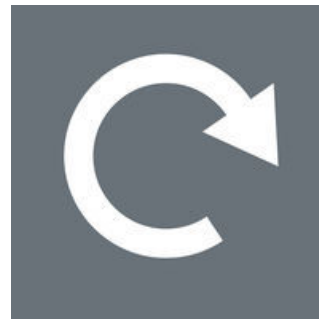
Robust models



With audible and tactile clicks when adjusting the scale values.



When the set torque value is reached, an audible and tactile mechanism triggers.



The reversible Click-Torque wrenches are for right-handed use.



Very robust design with reversible ratchet (45 teeth) and ergonomic 2-component handle.

Further versions in this product family:



	inch	Nm	Nm	lbf. ft.	mm	mm	mm	mm	mm	inch	inch	inch	inch	inch
05075621001	1/2"	5.0	20-100	15-73	405	140	47	43	18.5	15 15/16"	5 33/64"	1 27/32"	1 11/16"	45/64"

Web link

https://products.wera.de/en/torque_tools_series_click-torque_wrenches_click-torque_torque_wrenches_with_reversible_ratchet_click-torque_c_2.html

Wera - Click-Torque C 2
05075621001 - 4013288193223

Wera Werkzeuge GmbH
Korzter Straße 21-25
D-42349 Wuppertal
Tel: +49 (0)2 02 / 40 45-0
E-Mail: info@wera.de

Click-Torque C 2 torque wrench with reversible ratchet, 20-100 Nm, 1/2" x 20-100

Nm

Click-Torque torque wrenches with reversible ratchet



Web link

https://products.wera.de/en/torque_tools_series_click-torque_wrenches_click-torque_torque_wrenches_with_reversible_ratchet_click-torque_c_2.html

Wera - Click-Torque C 2
05075621001 - 4013288193223

Wera Werkzeuge GmbH
Korzter Straße 21-25
D-42349 Wuppertal
Tel: +49 (0)2 02 / 40 45-0
E-Mail: info@wera.de