

**Kraftform Micro 12 Electronics 1 Screwdriver set for electronic applications, 12 pieces**  
Series Kraftform Micro



<b>EAN:</b>	4013288194831	<b>Size:</b>	250x117x55 mm
<b>Part number:</b>	05073677001	<b>Weight:</b>	364 g
<b>Article number:</b>	Kraftform Micro 12 Electronics 1	<b>Country of origin:</b>	CZ
		<b>Customs tariff number:</b>	82054000

- Kraftform Micro screwdriver for slotted, Phillips, TORX® B0, Hex, IPR and Microstix® screws plus ejector.
- Kraftform Micro handle for fast and ergonomic working
- The Wera Black Point tip offers an exact fit and optimum corrosion protection
- Kraftform Micro set in a robust pouch
- Take it easy tool finder: colour coding according to profile and size

High quality Wera Micro screwdriver set for precision mechanical work. Rapid twisting is possible by fixing the hand on the twist cap and using the fast-turning zone just below it. This makes time-consuming grip adjustments unnecessary. Power zone with integrated soft zones ensure the transfer of higher tightening and loosening torque. Precision zone for the right angle for adjustment work. The Wera Black Point tip offers high corrosion protection and an exact fit. Includes practical rack for tidy storage of the screwdrivers.

**Web link**

[https://products.wera.de/en/screwdrivers\\_series\\_kraftform\\_micro\\_kraftform\\_micro\\_12\\_electronics\\_1.html](https://products.wera.de/en/screwdrivers_series_kraftform_micro_kraftform_micro_12_electronics_1.html)

Wera - Kraftform Micro 12 Electronics 1  
05073677001 - 4013288194831

Wera Werkzeuge GmbH  
Korzter Straße 21-25  
D-42349 Wuppertal  
Tel: +49 (0)2 02 / 40 45-0  
E-Mail: [info@wera.de](mailto:info@wera.de)

**Kraftform Micro 12 Electronics 1 Screwdriver set for electronic applications, 12 pieces**  
**Series Kraftform Micro**




**Set contents:**


 **2050 PH Micro**  
 05345290001<sup>1),2)</sup> 1 x PH 000 x 40 mm  
 05118019001<sup>1),2)</sup> 1 x PH 00 x 40 mm  
 05118026001<sup>3)</sup> 1 x PH 0 x 40 mm  
 1) Optimised for Asian PH screws  
 2) On the output side, the blade is turned to a nominal length of 10 mm.  
 3) Size 0 modified according to J.CIS 0 (Japanese Camera Industrial Standard)


 **2067 TORX® B0 Micro**  
 05118046001 1 x TX 8 x 60 mm  
 05118050001 1 x TX 10 x 60 mm

 **2067 TORX PLUS® IPR Micro**  
 05030160001 1 x 1 IPR x 40 mm

 **2035 Micro**  
 05117997001 1 x 0.35 x 2.5 x 40 mm  
 05118002001 1 x 0.23 x 1.5 x 40 mm

 **2069 Micro**  
 05118112001 1 x 2.5 x 60 mm  
 05118114001 1 x 3 x 60 mm

 **2072**  
 05118145001 1 x m x 40 mm

 **1429**  
 05027456001 1 x 1 x 3.5 x 50 mm

**Kraftform Micro Handle**

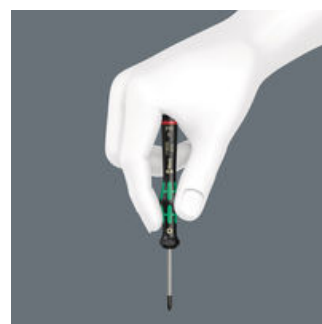


Screwdriving jobs in electrical and precision engineering applications are often tedious and time-consuming. We learned from users what is important for them: working speeds, torque, precision – and we then focused particularly on these issues.



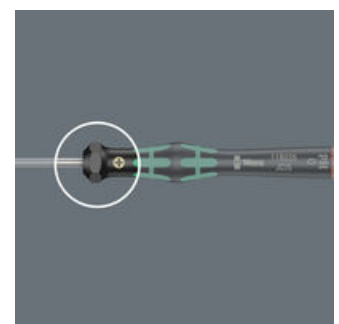
Multi-component screwdriver handle for ergonomic working.

**The refined screwdriver for electronics technicians**



The Kraftform Micro, with its three zones and their specific arrangement, satisfies these requirements perfectly. The free-turning cap that provides support for the hand works with these advantages, enabling quick and easy precision work.

**The precision zone**



The precision zone directly above the blade gives the user a better feel for the right rotation angle during fine adjustment work.

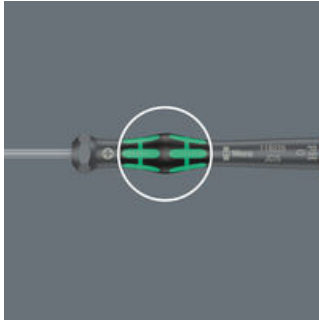
**Web link**

[https://products.wera.de/en/screwdrivers\\_series\\_kraftform\\_micro\\_kraftform\\_micro\\_12\\_electronics\\_1.html](https://products.wera.de/en/screwdrivers_series_kraftform_micro_kraftform_micro_12_electronics_1.html)

Wera - Kraftform Micro 12 Electronics 1  
 05073677001 - 4013288194831

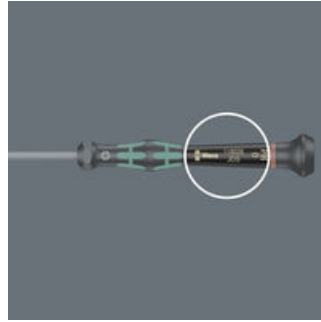
Wera Werkzeuge GmbH  
 Korzter Straße 21-25  
 D-42349 Wuppertal  
 Tel: +49 (0)2 02 / 40 45-0  
 E-Mail: info@wera.de

The power zone



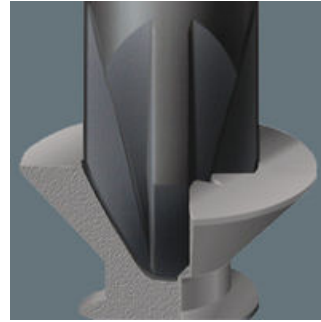
The power zone has integrated soft zones near the blade tip to ensure high torque transfer for loosening or tightening screws without losing contact with the screw.

The fast-turning zone



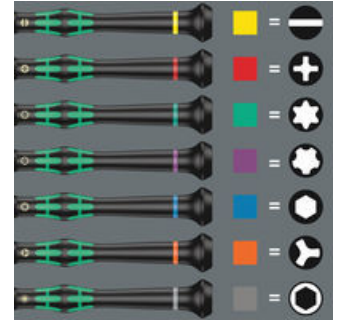
The fast-turning zone just below the rotating cap allows rapid twisting.

Wera Black Point tip



The Wera Black Point tip and a refined hardening process ensure long service life of the tip, improved corrosion protection and an exact fit.

"Take it easy" Tool Finder



Screwdrivers with "Take it easy" tool finder: colour coding according to profile and size stamp.

Web link

[https://products.wera.de/en/screwdrivers\\_series\\_kraftform\\_micro\\_kraftform\\_micro\\_12\\_electronics\\_1.html](https://products.wera.de/en/screwdrivers_series_kraftform_micro_kraftform_micro_12_electronics_1.html)

Wera - Kraftform Micro 12 Electronics 1  
05073677001 - 4013288194831

Wera Werkzeuge GmbH  
Korzerter Straße 21-25  
D-42349 Wuppertal  
Tel: +49 (0)2 02 / 40 45-0  
E-Mail: [info@wera.de](mailto:info@wera.de)