

Kraftform Kompakt 60, 17 pieces

Kraftform Kompakt 60, 62



EAN:	4013288096289	Size:	155x130x55 mm
Part number:	05059295001	Weight:	554 g
Article number:	KK 60	Country of origin:	CZ
		Customs tariff number:	82079030

- Quick-release chuck with Rapidaptor technology
- Multi-component Kraftform handle of the bit holder for fast and ergonomic screwdriving
- Hexagonal anti-roll feature against rolling away
- Hex-Plus allows socket head screws to live longer
- Suitable for docking with the Wera 2go system.

Pouch with 89-mm long bits. Includes 816 R Kraftform holder with Rapidaptor quick-release chuck and multi-component Kraftform handle for low-fatigue working. Hard gripping zones for high working speeds whereas soft zones ensure high torque transfer. Suitable for manual and power tool operations; 17-piece.

Web link

https://products.wera.de/en/kraftform_kompakt_kraftform_kompakt_60_62_kk_60.html

Wera - KK 60
05059295001 - 4013288096289

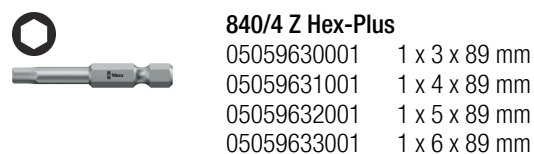
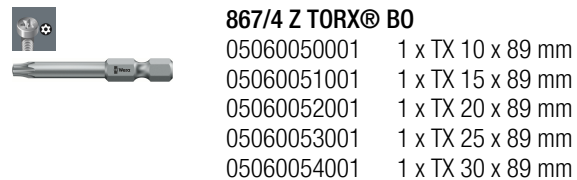
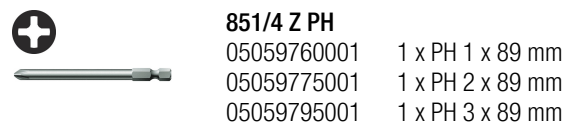
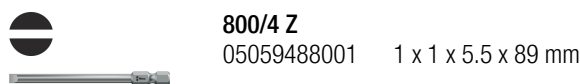
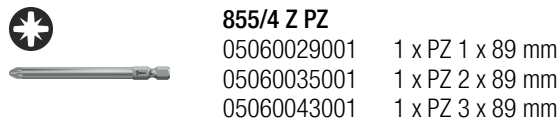
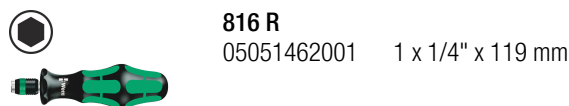
Wera Werkzeuge GmbH
Korzter Straße 21-25
D-42349 Wuppertal
Tel: +49 (0)2 02 / 40 45-0
E-Mail: info@wera.de

Kraftform Kompakt 60, 17 pieces

Kraftform Kompakt 60, 62



Set contents:



For fixed workplace locations and external sites



Why is the right tool so often not at hand? The reason: too many tools and overly-heavy tool bags can make it bothersome to carry them onsite. So for us it was a clear challenge: to design a tool that is suitable for a whole host of applications and can be easily taken along to jobs at other sites. Our solution: Kraftform Kompakt tools. A handle into which blades with a range of different profiles can be inserted. Compactly and protectively housed in a light and robust textile pouch or plastic box.

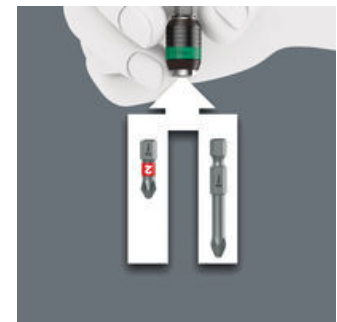
Frequently, users have to work with their tools at a fixed workplace location as well as at external sites. Just as frequently, it is only on site that a decision is taken as to whether to work manually or with a power tool. The Kraftform Kompakt tool sets equip the user for both types of operation with just single set. Additionally, the sets are kept in belt pouches or plastic cases. This keeps them secure and clean and means that they are clearly arranged for easy tool selection, something that is very practical when they are to be used or transported.

Handle/interchangeable blade system



The handle/interchangeable blade system allows rapid exchange of the blades required for a wide range of applications.

Chuck-all



The Rapidaptor quick-release chucks hold 1/4" DIN ISO 1173-C 6,3 and E 6,3 as well as Wera series 1 and 4 bits.

Web link

https://products.wera.de/en/kraftform_kompakt_kraftform_kompakt_60_62_kk_60.html

Wera - KK 60
05059295001 - 4013288096289

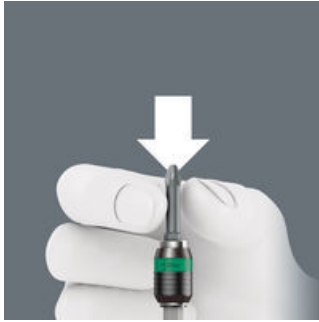
Wera Werkzeuge GmbH
Korzter Straße 21-25
D-42349 Wuppertal
Tel: +49 (0)2 02 / 40 45-0
E-Mail: info@wera.de

Rapid-in and self-lock

Rapid-out

Hex-Plus

Prevents hand injuries



The bit can be pushed into the adaptor without moving the sleeve. The lock is activated automatically as soon as the bit is applied to the screw. Bits are held securely and wobble-free.



Simply push the sleeve forward to change the bit. The spring mechanism lifts the bit off the magnet and unlocks the tool. The bit can be easily removed. The rapid-out function makes it easy to remove even the smallest bits without extra tools.



Hexagon screws can endure a problem because the contact surfaces delivering the power from the conventional tool, is transferred to the screw via very small surface areas. The consequence: the screw can become damaged (rounding out). Hex-Plus tools have a greater contact surface that prevents this from happening! At the same time, as much as 20 % more torque can be applied. Good to know: Hex-Plus tools fit into every standard hexagon socket screw!



The outstanding design of the Kraftform handle that fits perfectly into the hand prevents hand injuries such as blisters and calluses.

Web link

https://products.wera.de/en/kraftform_kompakt_kraftform_kompakt_60_62_kk_60.html

Wera - KK 60
05059295001 - 4013288096289

Wera Werkzeuge GmbH
Korzter Straße 21-25
D-42349 Wuppertal
Tel: +49 (0)2 02 / 40 45-0
E-Mail: info@wera.de