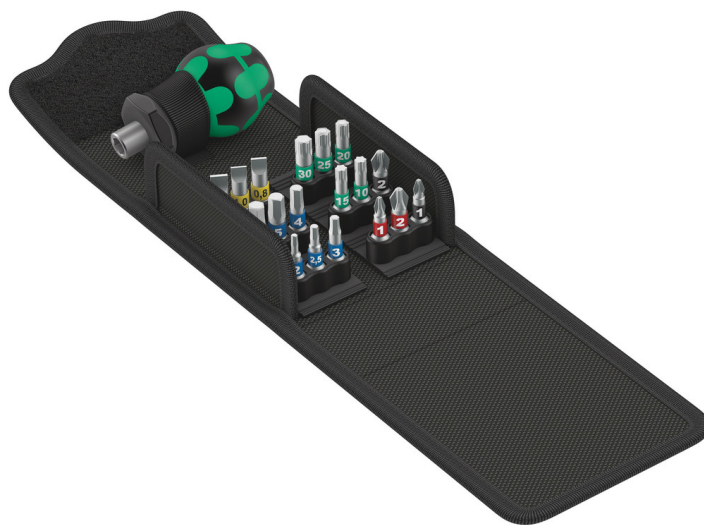


Kraftform Kompakt Stubby 1, 19 pieces

Kraftform Kompakt Stubby



EAN:	4013288214553	Size:	115x100x60 mm
Part number:	05057471001	Weight:	266 g
Article number:	Kraftform Kompakt Stubby 1	Country of origin:	CZ
		Customs tariff number:	82079030

- Handle/Interchangeable blade system for rapid exchange of the blade
- Stubby bit hand holder: short compact shape for working in confined spaces
- Ergonomic 2-component Kraftform handle for precise work
- Bits with BiTorsion zone to cushion load peaks
- Take it easy tool finder: colour coding according to profile and size

Handle/interchangeable blade system for lightning fast replacement of the required blade. Especially small bit-holding Stubby screwdriver handle with short blade for hard to reach areas. Suitable for the mounting of bits with 1/4" hexagon drive as per DIN ISO 1173-C 6.3 and Wera connection series 1. With strong permanent magnet, which also holds large and heavy screws. The 2-component Kraftform handle with its practical combination of hard and soft zones allows for a firm grip and precise working. High-quality BiTorsion bits with a softer BiTorsion zone to prevent twisting of the bit tip under high loads. This significantly increases product life. Compact, textile box with high robustness, low weight and volume. Suitable for docking with the Wera 2go system.

Web link

https://products.wera.de/en/kraftform_kompakt_kraftform_kompakt_stubby_with_kraftform_bit-holding_stubby_screwdriver_handle_kraftform_kompakt_stubby_1.html

Wera - Kraftform Kompakt Stubby 1
05057471001 - 4013288214553

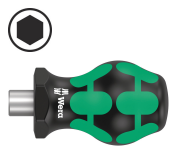
Wera Werkzeuge GmbH
Korzter Straße 21-25
D-42349 Wuppertal
Tel: +49 (0)2 02 / 40 45-0
E-Mail: info@wera.de

Kraftform Kompakt Stubby 1, 19 pieces



Kraftform Kompakt Stubby

Set contents:



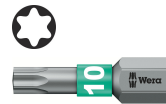
811/1 Stubby
05008880001 1 x 1/4"



851/1 BTZ PH
05056420001 1 x PH 1 x 25 mm
05056422001 1 x PH 2 x 25 mm



855/1 BTZ PZ
05056720001 1 x PZ 1 x 25 mm
05056722001 1 x PZ 2 x 25 mm



867/1 TORX® BTZ
05066120001 1 x TX 10 x 25 mm
05066122001 1 x TX 15 x 25 mm
05066124001 1 x TX 20 x 25 mm
05066126001 1 x TX 25 x 25 mm
05066128001 1 x TX 30 x 25 mm



840/1 BTZ Hex-Plus
05056681001 1 x 2 x 25 mm
05056682001 1 x 2.5 x 25 mm
05056683001 1 x 3 x 25 mm
05056684001 1 x 4 x 25 mm
05056685001 1 x 5 x 25 mm
05056686001 1 x 5.5 x 25 mm



800/1 BTZ
05056064001 1 x 0.8 x 5.5 x 25 mm
05056066001 1 x 1 x 5.5 x 25 mm
05056068001 1 x 1.2 x 6.5 x 25 mm

Compact shape



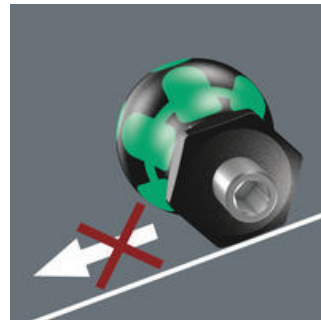
With its compact handle shape and the short blade, the Kraftform Stubbies are particularly suitable for working in confined screwdriving situations.

Tangible ergonomics



The 2-component Kraftform handle allows high power transmission due to the non-slip, softer grip areas and high working speeds due to the hard grip areas, which allow a quick hand switch.

Non-roll feature



The hexagonal non-roll feature prevents any rolling away at the workplace.

BiTorsion Bits



BiTorsion bits are absolutely premium products. They have a softer BiTorsion zone which reduces the hardness of the shaft by about 20 % in comparison to the drive tip. This means that the peak loads that cause bit breakage and premature wear are absorbed in this zone – something which enhances the service life of the bits.

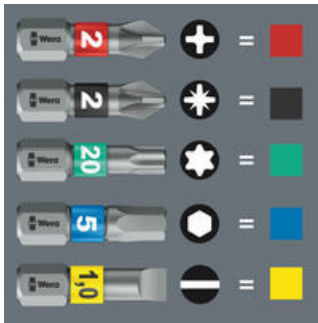
Web link

https://products.wera.de/en/kraftform_kompakt_kraftform_kompakt_stubby_with_kraftform_bit-holding_stubby_screwdriver_handle_kraftform_kompakt_stubby_1.html

Wera - Kraftform Kompakt Stubby 1
05057471001 - 4013288214553

Wera Werkzeuge GmbH
Korzter Straße 21-25
D-42349 Wuppertal
Tel: +49 (0)2 02 / 40 45-0
E-Mail: info@wera.de

“Take it easy” tool finder



"Take it easy" tool finder with colour coding according to profiles and size stamp – for simple and rapid accessing of the required tool

Web link

https://products.wera.de/en/kraftform_kompakt_kraftform_kompakt_stubby_with_kraftform_bit-holding_stubby_screwdriver_handle_kraftform_kompakt_stubby_1.html

Wera - Kraftform Kompakt Stubby 1
05057471001 - 4013288214553

Wera Werkzeuge GmbH
Korzter Straße 21-25
D-42349 Wuppertal
Tel: +49 (0)2 02 / 40 45-0
E-Mail: info@wera.de