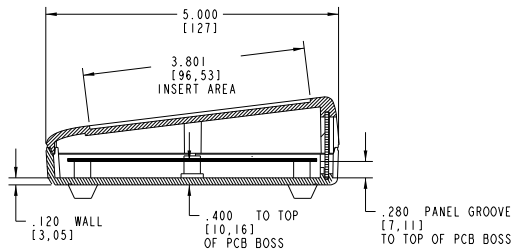
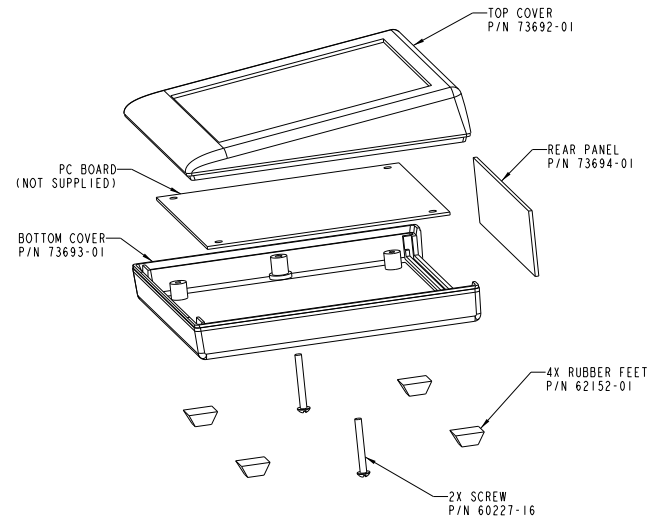
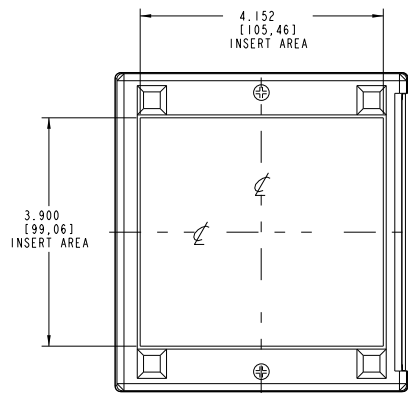
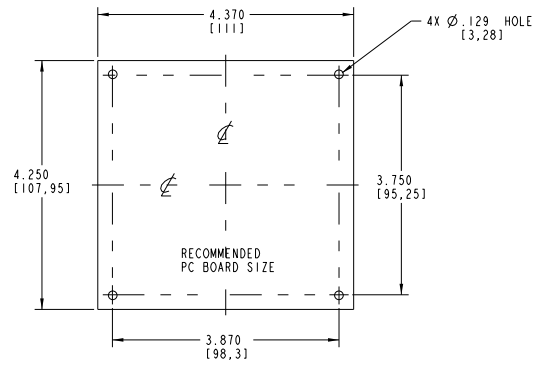


REAR PANEL SIZE



SECTION A-A



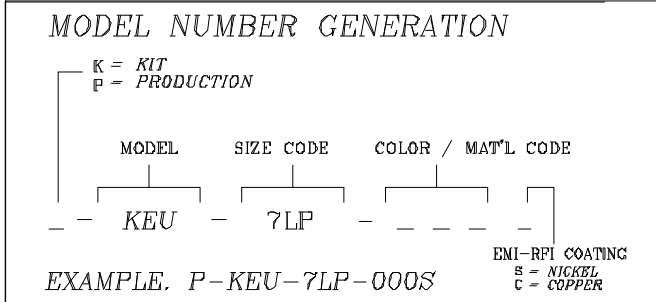
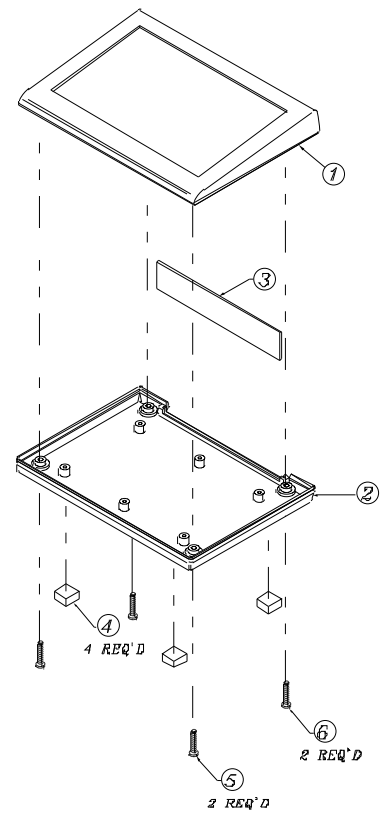
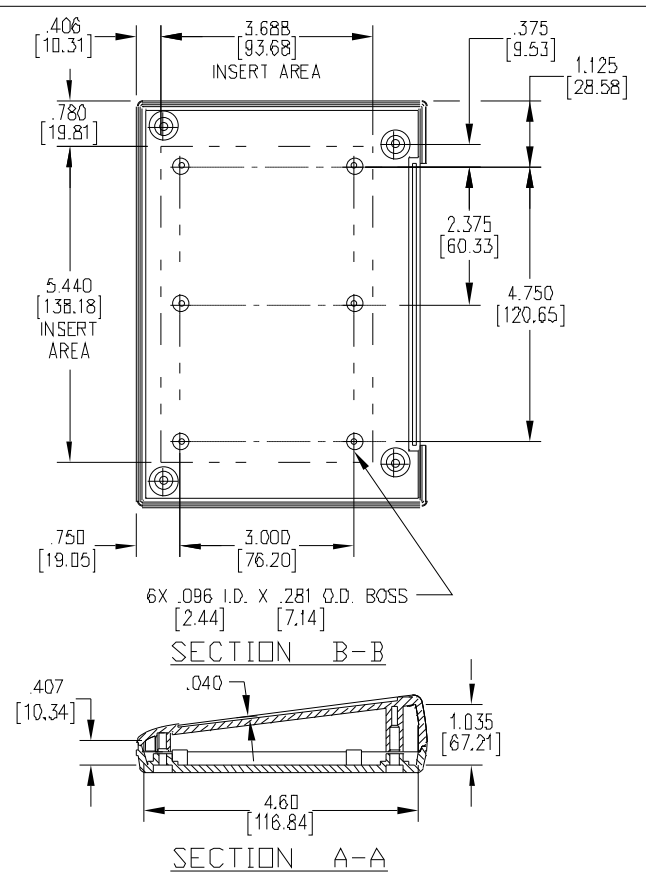
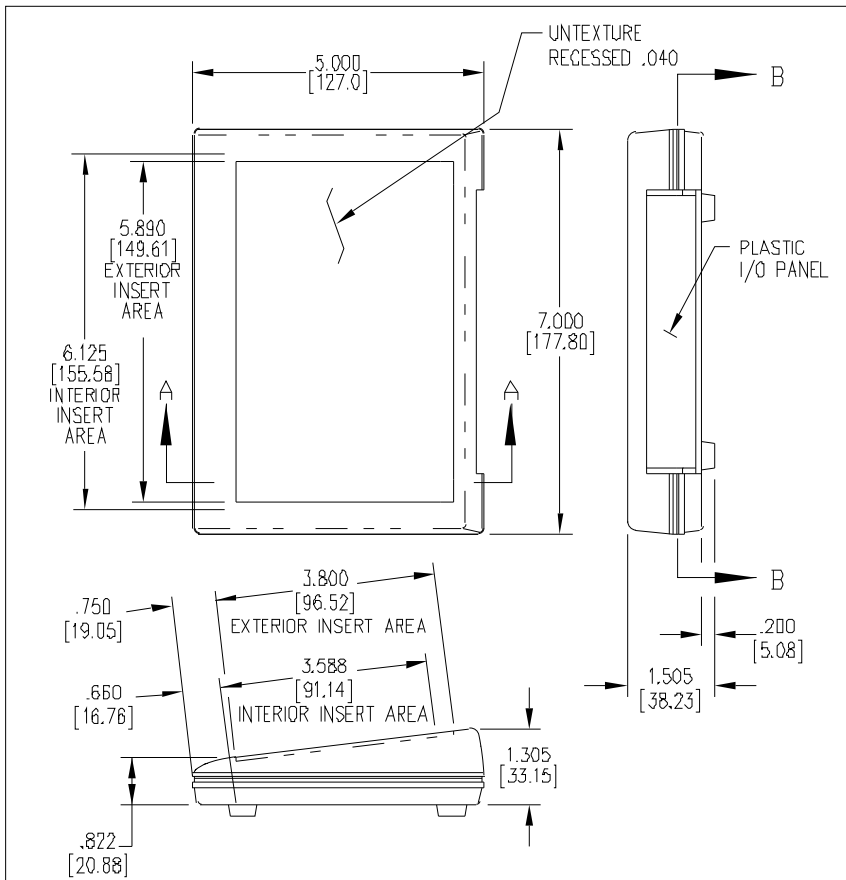
**PACINTEC®**  
1-610-361-4200

**KEU-5LP**

VISIT **PACINTEC®**  
ON THE WORLD WIDE WEB  
[www.pactecenclosures.com](http://www.pactecenclosures.com)

COLOR / MATERIAL CODE	
COLOR	94HB 94VO
BLACK	000 028
P. C. BONE	039 060

DRAWING NUMBER	REV
73695	E



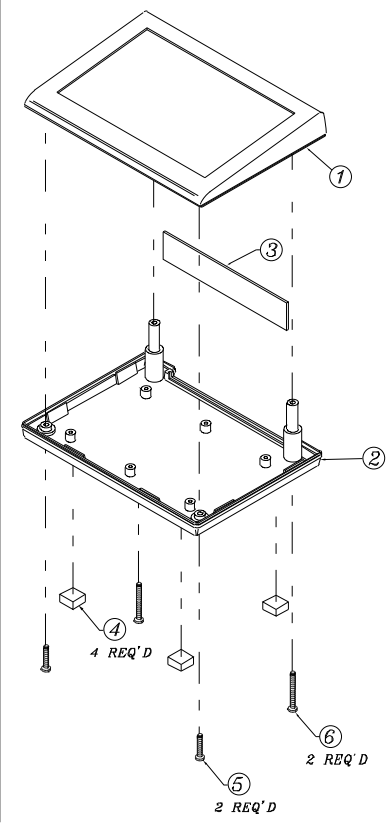
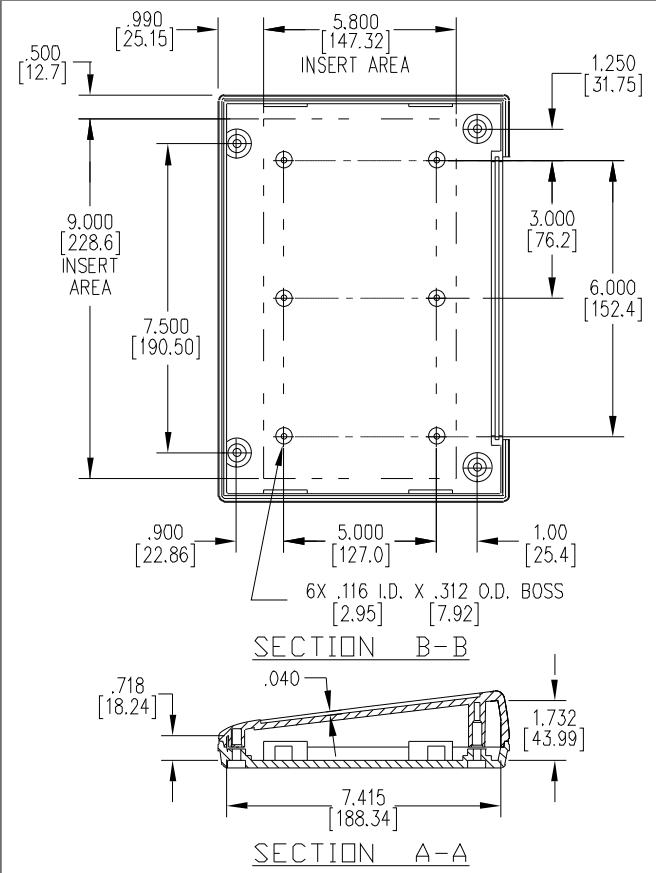
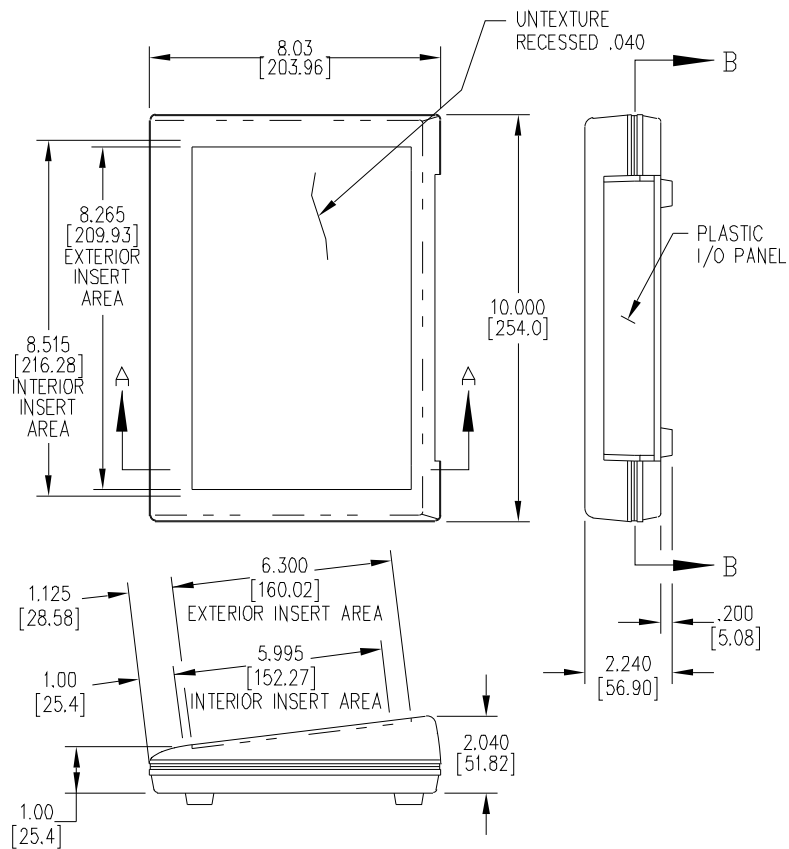
**NOTES:** I/O PANEL SIZE:  
 930±.005 [23.62±0.13] HIGH X 4.870±.005 [123.70±0.13] WIDE  
 X .080±.005 [1.52±0.13] THICK.  
 P.C. CARD SIZE: 6.500 [165.10] X 4.450 [113.03] X .062±.005 [1.57±0.13] THK.

COLOR / MAT'L CODE		
COLOR	94HB	94V0
BLACK	000	028
*GREY	001	024
*TAN	002	025
P.C.BONE	039	060

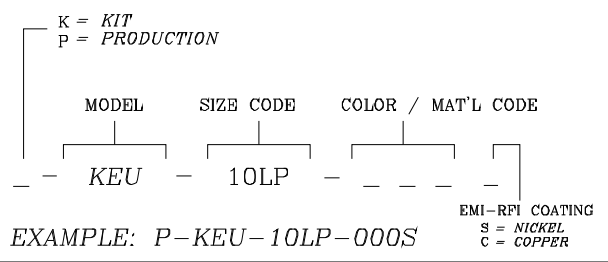
\*CUSTOM COLORS

ITEM	PART NUMBER	DESCRIPTION	QUANTITY	
			PROD.	KIT
1	72179-01	TOP COVER	1	1
2	61811-01	BOTTOM COVER	1	1
3	72460-01	I/O PANEL	—	1
4	62152-01	FOOT	4	4
5	60227-14	SCREW, PH. #4B X .50 LG.	2	2
6	60227-16	SCREW, PH. #4B X .94 LG.	2	2

**PACINTEC®**  
 KEU-7LP  
 1-610-361-4200



**MODEL NUMBER GENERATION**



**NOTES:**

PANEL SIZE: 1.445±.005 [36.70±0.13] HIGH X 6.990±.005 [177.55±0.13] WIDE X .060±.005 [1.52±0.13] THICK.

P.C. CARD SIZE 9.400 [238.76] X 6.300 [160.02] X .062±.005 [1.57±0.13] THK.

COLOR / MAT'L CODE		
COLOR	94HB	94VO
BLACK	000	028
*GREY	001	024
*TAN	002	025
P.C.BONE	039	060

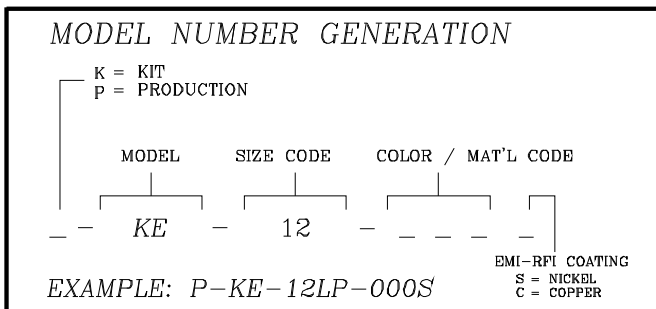
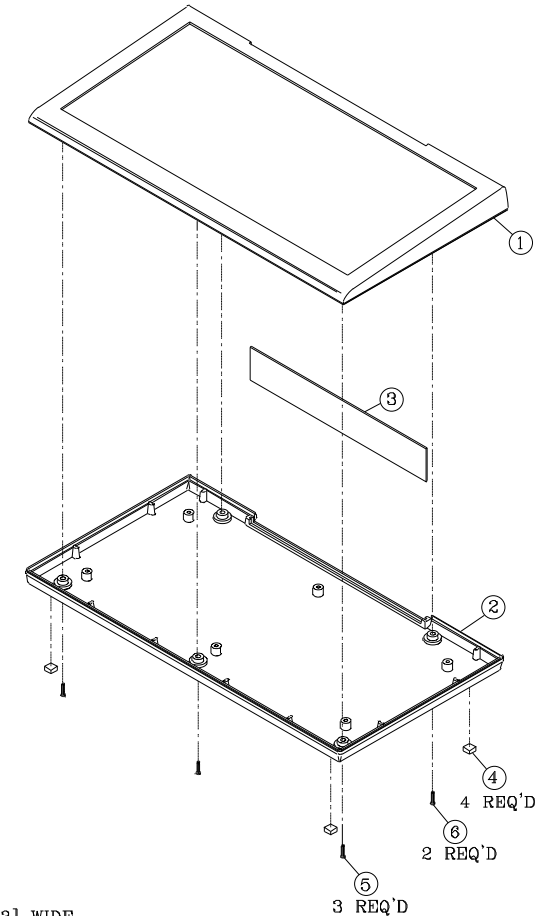
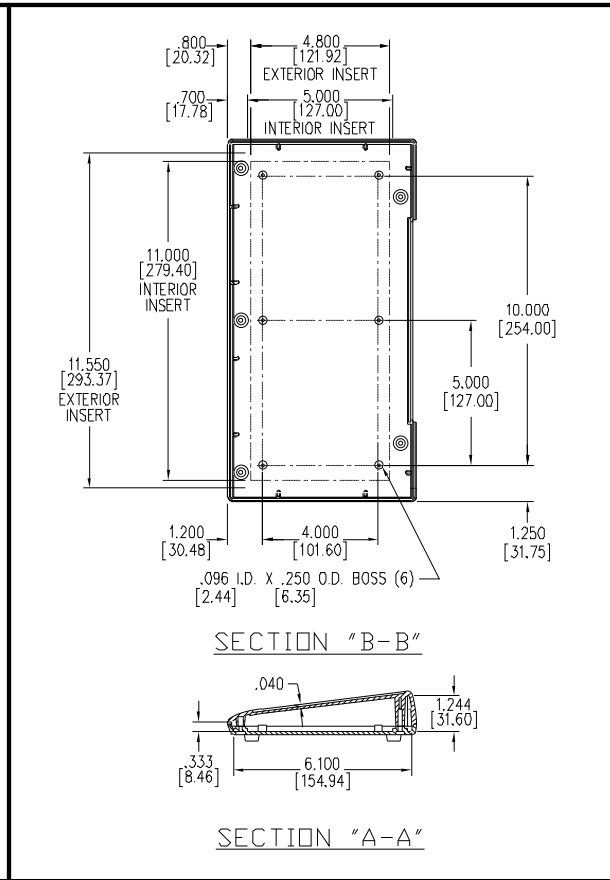
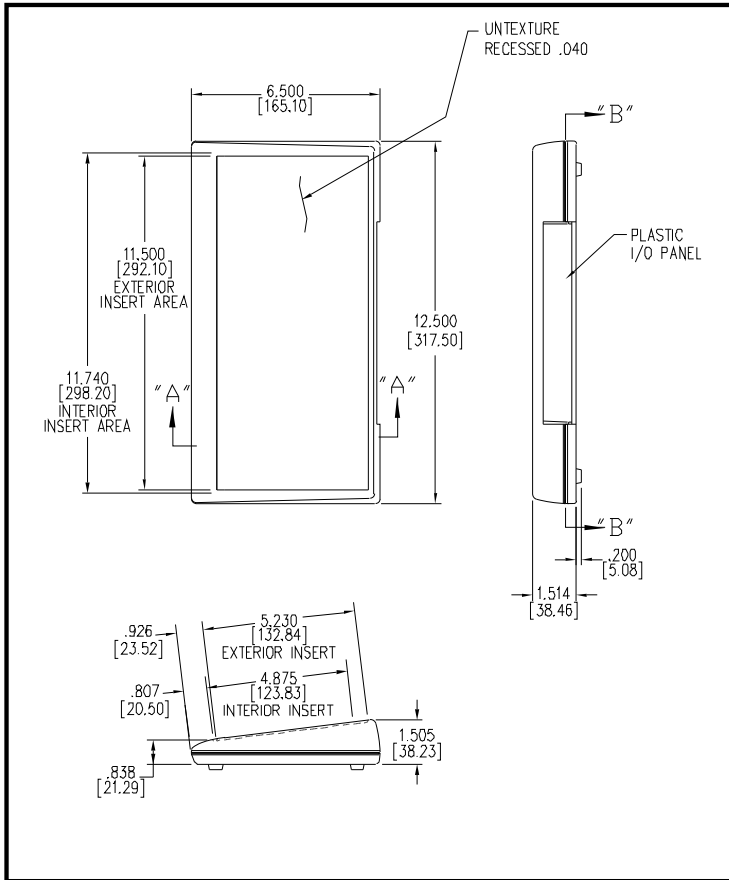
\*CUSTOM COLOR

ITEM	PART NUMBER	DESCRIPTION	QUANTITY	
			PROD.	KIT
1	72182-01	TOP COVER	1	1
2	61509-01	BOTTOM COVER	1	1
3	72460-02	I/O PANEL	-	1
4	62152-01	FOOT	4	4
5	60227-05	SCREW, PH, #4B X .69 LC.	2	2
6	60227-02	SCREW, PH, #4B X 1.50 LC.	2	2

**PACINTEC®**

KEU-10LP

1-610-361-4200



**NOTES: I/O PANEL SIZE:**

1.130±.005 [28.70±0.13] HIGH X 7.000±.005 [177.8±0.13] WIDE  
X .062±.005 [1.57±0.13] THICK IN PANEL GROOVE.

P.C. CARD SIZE: 5.000 [127.00] X 11.700 [297.18] X .062±.005 [1.57±0.13] THK.

COLOR / MAT'L CODE	94HB	94VO
BLACK	000	028
*GREY	001	024
*TAN	002	025
P.C.BONE	039	060

ITEM	PART NUMBER	DESCRIPTION	QUANTITY	
			PROD.	KIT
1	72180-01	TOP COVER	1	1
2	72181-01	BOTTOM COVER	1	1
3	72460-03	I/O PANEL	-	1
4	62162-01	FOOT	4	4
5	60227-12	SCREW, PHP, #4B X 38 LG	3	3
6	60227-04	SCREW, PHP, #4B X .56 LG.	2	2

**PACNITEC®**

KE-12LP

1-610-361-4200