

## 367/6 TORX® Screwdriver set Kraftform Plus and rack, 6 pieces

Kraftform Plus – Series 300



<b>EAN:</b>	4013288028891	<b>Size:</b>	285x210x55 mm
<b>Part number:</b>	05028062001	<b>Weight:</b>	749 g
<b>Article number:</b>	367/6 TORX®	<b>Country of origin:</b>	CZ
		<b>Customs tariff number:</b>	82054000

- Screwdriver for TORX® screws
- Multi-component Kraftform handle for fast and ergonomic screwdriving
- Take it easy tool finder: colour coding according to profile and size
- Hexagonal anti-roll feature against rolling away
- The Wera Black Point tip offers an exact fit and optimum corrosion protection

6-piece screwdriver set for TORX® screws. Multi-component Kraftform handle for fast and low-fatigue working. Kraftform Plus: hard gripping zones for high working speeds whereas soft zones ensure high torque transfer. The Wera Black Point tip and a complex hardening process ensure a long service life of the tip, enhanced corrosion protection and an exact fit. "Take it easy" Tool Finder: colour coding according to profile and size. The hexagonal anti-roll feature prevents any bothersome rolling away at the workplace. Includes a practical rack for tidy storage of the screwdrivers.

### Web link

[https://products.wera.de/en/screwdrivers\\_kraftform\\_plus\\_series\\_300\\_367\\_6\\_torx.html](https://products.wera.de/en/screwdrivers_kraftform_plus_series_300_367_6_torx.html)

Wera - 367/6 TORX®  
05028062001 - 4013288028891

Wera Werkzeuge GmbH  
Korzter Straße 21-25  
D-42349 Wuppertal  
Tel: +49 (0)2 02 / 40 45-0  
E-Mail: [info@wera.de](mailto:info@wera.de)

Kraftform Plus – Series 300

Set contents:



**367 TORX®**

05028005001	1 x TX 10 x 80 mm
05028008001	1 x TX 15 x 80 mm
05028010001	1 x TX 20 x 100 mm
05028012001	1 x TX 25 x 100 mm
05028015001	1 x TX 30 x 115 mm
05028020001	1 x TX 40 x 130 mm

**Kraftform**



Kraftform Plus screwdrivers – ergonomics you can grasp. They relieve the entire hand-arm system even when used intensively. Along with other technical and product advantages such as the Lasertip for a secure fit in the screw head, Kraftform screwdrivers are the ideal choice whenever manual screwdriving jobs are concerned.



The basic idea for the prototype of the Kraftform handle – that the hand should dictate the design – has, right through to today, proved to be correct. In cooperation with the internationally recognised Fraunhofer IAO Institute, Wera developed a screwdriver handle designed to match the shape of the human hand as long ago as the 1960s. After a long development phase, the Wera Kraftform handle was launched to the market in 1968. It has been optimised through the years with new technologies, but has kept its proven shape. After all, the human hand has not changed either.

**Prevents hand injuries**



The outstanding design of the Kraftform handle that fits perfectly into the hand prevents hand injuries such as blisters and calluses.

**Rapid hand repositioning**



The hard materials used for the handle ensure rapid hand repositioning without any danger of the skin "sticking" to the handle. The surrounding hard zones with large diameters glide like wheels across the hand.

**Web link**

[https://products.wera.de/en/screwdrivers\\_kraftform\\_plus\\_series\\_300\\_367\\_6\\_torx.html](https://products.wera.de/en/screwdrivers_kraftform_plus_series_300_367_6_torx.html)

Wera - 367/6 TORX®  
05028062001 - 4013288028891

Wera Werkzeuge GmbH  
Korzter Straße 21-25  
D-42349 Wuppertal  
Tel: +49 (0)2 02 / 40 45-0  
E-Mail: info@wera.de

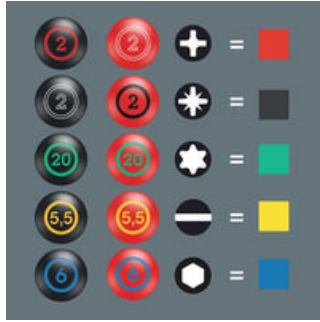
Kraftform Plus – Series 300

Large contact area



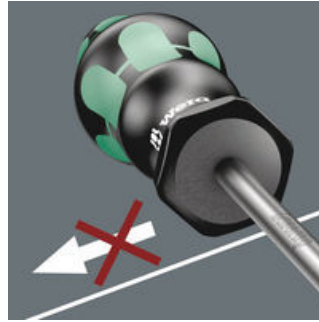
The large contact area – with particularly high friction to the soft zones – results in high torque transfer without any bruising from the edges.

“Take it easy” Tool Finder



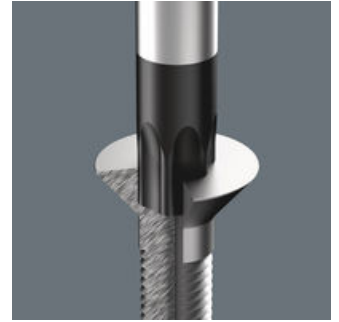
Screwdrivers with "Take it easy" tool finder: colour coding according to profile and size stamp.

Non-roll feature



The hexagonal non-roll feature prevents any rolling away at the workplace.

Wera Black Point tip



The Wera Black Point tip and a refined hardening process ensure long service life of the tip, improved corrosion protection and an exact fit.

Web link

[https://products.wera.de/en/screwdrivers\\_kraftform\\_plus\\_series\\_300\\_367\\_6\\_torx.html](https://products.wera.de/en/screwdrivers_kraftform_plus_series_300_367_6_torx.html)

Wera - 367/6 TORX®  
05028062001 - 4013288028891

Wera Werkzeuge GmbH  
Korzter Straße 21-25  
D-42349 Wuppertal  
Tel: +49 (0)2 02 / 40 45-0  
E-Mail: [info@wera.de](mailto:info@wera.de)