

## 367 Screwdriver for TORX® screws, TX 10 x 80 mm

Kraftform Plus – Series 300



**EAN:** 4013288004222  
**Part number:** 05028005001  
**Article number:** 367 TORX®

**Size:** 161x26x26 mm  
**Weight:** 34 g  
**Country of origin:** CZ  
**Customs tariff number:** 82054000



- Screwdriver for recessed TORX® screws
- Multi-component Kraftform handle for fast and ergonomic screwdriving
- Take it easy tool finder: colour coding according to profile and size
- Hexagonal anti-roll feature against rolling away
- The Wera Black Point tip offers an exact fit and optimum corrosion protection

High quality Kraftform Plus screwdriver. Multi-component Kraftform handle for fast and low-fatigue working. Kraftform Plus: hard gripping zones for high working speeds whereas soft zones ensure high torque transfer. The Wera Black Point tip and a complex hardening process ensure a long service life of the tip, enhanced corrosion protection and an exact fit. "Take it easy" Tool Finder: colour coding according to profile and size. The hexagonal anti-roll feature prevents any bothersome rolling away at the workplace.

### Web link

[https://products.wera.de/en/screwdrivers\\_kraftform\\_plus\\_series\\_300\\_367\\_torx.html](https://products.wera.de/en/screwdrivers_kraftform_plus_series_300_367_torx.html)

Wera - 367 TORX®  
05028005001 - 4013288004222

Wera Werkzeuge GmbH  
Korzter Straße 21-25  
D-42349 Wuppertal  
Tel: +49 (0)2 02 / 40 45-0  
E-Mail: [info@wera.de](mailto:info@wera.de)

**Kraftform**



Kraftform Plus screwdrivers – ergonomics you can grasp. They relieve the entire hand-arm system even when used intensively. Along with other technical and product advantages such as the Lasertip for a secure fit in the screw head, Kraftform screwdrivers are the ideal choice whenever manual screwdriving jobs are concerned.



The basic idea for the prototype of the Kraftform handle – that the hand should dictate the design – has, right through to today, proved to be correct. In cooperation with the internationally recognised Fraunhofer IAO Institute, Wera developed a screwdriver handle designed to match the shape of the human hand as long ago as the 1960s. After a long development phase, the Wera Kraftform handle was launched to the market in 1968. It has been optimised through the years with new technologies, but has kept its proven shape. After all, the human hand has not changed either.

**Rapid hand repositioning**



The hard materials used for the handle ensure rapid hand repositioning without any danger of the skin "sticking" to the handle. The surrounding hard zones with large diameters glide like wheels across the hand.

**Large contact area**



The large contact area – with particularly high friction to the soft zones – results in high torque transfer without any bruising from the edges.

**Non-roll feature**



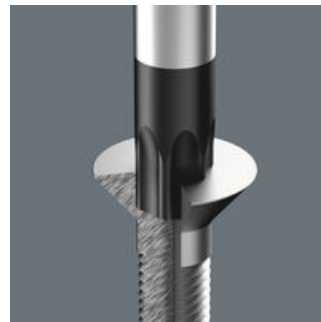
The hexagonal non-roll feature prevents any rolling away at the workplace.

**Identification marking**



The screw symbol and tip size identification markings on the handle make it easier to find the right screwdriver in the tool case, or at the workplace.

**Wera Black Point tip**



The Wera Black Point tip and a refined hardening process ensure long service life of the tip, improved corrosion protection and an exact fit.






**Web link**

[https://products.wera.de/en/screwdrivers\\_kraftform\\_plus\\_series\\_300\\_367\\_torx.html](https://products.wera.de/en/screwdrivers_kraftform_plus_series_300_367_torx.html)

Wera - 367 TORX®  
05028005001 - 4013288004222

Wera Werkzeuge GmbH  
Korzter Straße 21-25  
D-42349 Wuppertal  
Tel: +49 (0)2 02 / 40 45-0  
E-Mail: info@wera.de

Further versions in this product family:

		 mm	 mm	 mm	 inch
05028000001	TX 5	60	70	3.5	2 3/8
05028001001	TX 6	60	70	3.5	2 3/8
05028002001	TX 7	60	70	3.5	2 3/8
05028003001	TX 8	60	81	3.5	2 3/8
05028004001	TX 9	60	81	4.0	2 3/8
<b>05028005001</b>	<b>TX 10</b>	<b>80</b>	<b>81</b>	<b>4.0</b>	<b>3 1/8</b>
05028008001	TX 15	80	98	4.0	3 1/8
05028010001	TX 20	100	98	4.5	4
05028012001	TX 25	100	105	5.0	4
05028013001	TX 27	115	105	5.5	4 9/16
05028015001	TX 30	115	105	6.0	4 9/16
05028020001	TX 40	130	112	7.0	5 1/8
05028025001	TX 45	130	112	8.0	5 1/8

**Web link**
[https://products.wera.de/en/screwdrivers\\_kraftform\\_plus\\_series\\_300\\_367\\_torx.html](https://products.wera.de/en/screwdrivers_kraftform_plus_series_300_367_torx.html)

Wera - 367 TORX®

05028005001 - 4013288004222

Wera Werkzeuge GmbH

Korzter Straße 21-25

D-42349 Wuppertal

Tel: +49 (0)2 02 / 40 45-0

E-Mail: info@wera.de