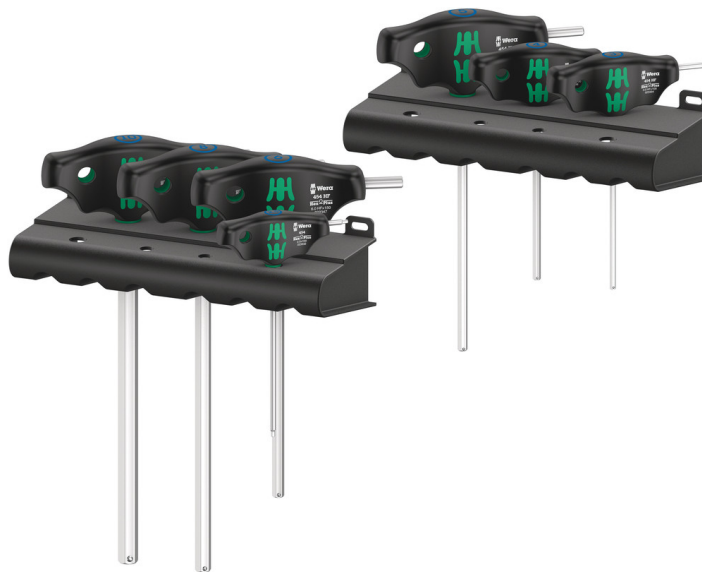


454/7 HF Set 1 screwdriver set T-handle screwdrivers Hex-Plus with holding function, 7 pieces
Series 400 T-Handle



EAN:	4013288214829	Size:	274x240x67 mm
Part number:	05023450001	Weight:	1120 g
Article number:	454/7 HF Set 1	Country of origin:	CZ
		Customs tariff number:	82054000

- T-handle screwdriver for the transmission of particularly high tightening and loosening moments
- Ergonomic 2-component handle with finger handle recesses and pleasant surface feel for very high power transmission and fatigue-free working.
- Take it easy tool finder: colour coding according to profile and size
- With additional short arm for the transmission of extremely high torques due to the leverage of the long arm
- With holding function (HF) on the long arm to securely hold the screw on the tool

T-handle screwdriver: The ideal handle shape to allow high torque transmission in difficult tightening and loosening situations. The ergonomic shape of the handle fills the palm of the hand well, the fingers lie safely in the soft rounded handle recesses. The whole hand makes contact with the handle and friction losses between the hand and the handle are avoided. With holding function (HF) to securely hold the hexagon socket screw on the tool. Special surface treatment of the blades for high corrosion protection and an optimum fit in the screw head.

Web link
https://products.wera.de/en/screwdrivers_series_400_t-handle_454_7_hf_set_1.html

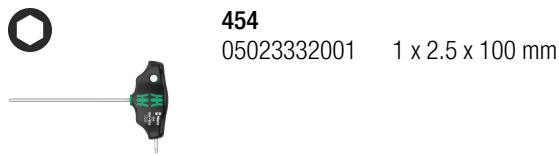
Wera - 454/7 HF Set 1
05023450001 - 4013288214829

Wera Werkzeuge GmbH
Korzter Straße 21-25
D-42349 Wuppertal
Tel: +49 (0)2 02 / 40 45-0
E-Mail: info@wera.de

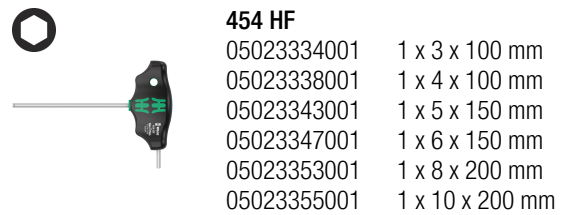
454/7 HF Set 1 screwdriver set T-handle screwdrivers Hex-Plus with holding function, 7 pieces
Series 400 T-Handle



Set contents:



454
 05023332001 1 x 2.5 x 100 mm



454 HF
 05023334001 1 x 3 x 100 mm
 05023338001 1 x 4 x 100 mm
 05023343001 1 x 5 x 150 mm
 05023347001 1 x 6 x 150 mm
 05023353001 1 x 8 x 200 mm
 05023355001 1 x 10 x 200 mm



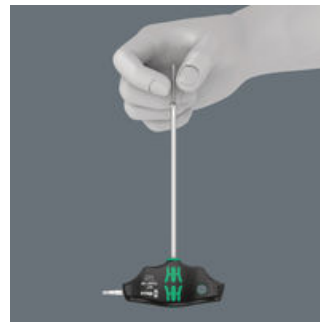
Rack
 05134001001 2 x 190 x 50 mm

Ergonomic 2-component T-handle



The ergonomically shaped 2-component T-handle with finger recesses and pleasant surface facilitates very high power transmission and fatigue-free working.

TORX® HF profile



In tight assembly or disassembly situations, for example in engine compartments, it is not possible to securely hold the screw with the hand on the screwdriver, and the screw subsequently often gets lost. Lengthy searches or the loss of the screw (with the associated danger that could bring about) are the consequence. The HF tools developed by Wera are ideal because they feature an optimised geometry of the original TORX® profile. The wedging forces resulting from the surface pressure between the drive tip and the screw profile mean that the screw is securely held on the tool!

Second arm



The additional short arm, which emerges laterally from the handle, allows the transmission of extremely high torques by using the long arm as a lever.

Web link

https://products.wera.de/en/screwdrivers_series_400_t-handle_454_7_hf_set_1.html

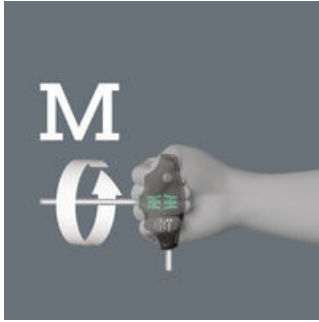
Wera - 454/7 HF Set 1
 05023450001 - 4013288214829

Wera Werkzeuge GmbH
 Korzter Straße 21-25
 D-42349 Wuppertal
 Tel: +49 (0)2 02 / 40 45-0
 E-Mail: info@wera.de

454/7 HF Set 1 screwdriver set T-handle screwdrivers Hex-Plus with holding function, 7 pieces
Series 400 T-Handle



High torque transfer



By using the blade as an extension of your lower arm you can transfer particularly high torque.

Corrosion protection and fitting accuracy



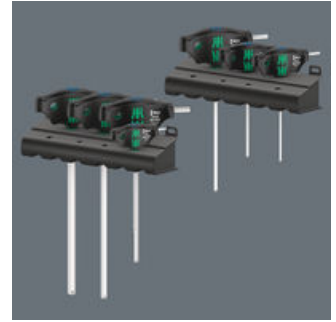
Due to the special surface treatment, the blades receive a high level of corrosion protection. The optimum fitting accuracy of the screw is also guaranteed.

"Take it easy" Tool Finder



Screwdrivers with "Take it easy" tool finder: colour coding according to profile and size stamp.

With useful plastic rack



Including useful rack for well-arranged storage of the screwdrivers.

Web link

https://products.wera.de/en/screwdrivers_series_400_t-handle_454_7_hf_set_1.html

Wera - 454/7 HF Set 1
05023450001 - 4013288214829

Wera Werkzeuge GmbH
Korzter Straße 21-25
D-42349 Wuppertal
Tel: +49 (0)2 02 / 40 45-0
E-Mail: info@wera.de