

8100 SA 10 Zyklop Metal Ratchet Set with push-through square, 1/4" drive, imperial, 28 pieces
The Zyklop Metal Ratchet Push, 1/4"



EAN:	4013288173904	Size:	205x90x50 mm
Part number:	05004020001	Weight:	684 g
Article number:	8100 SA 10	Country of origin:	CZ
		Customs tariff number:	82041100

- Extremely slim ratchet with long lever
- Return angle of only 4.7°
- Absolutely smooth switchover of the non-detachable push-through square
- With Take it easy tool finder: colour coding by size

Incredibly compact set arrangement with many tools in a minimum of space. A completely new ratchet set feeling thanks to the unique textile boxes that are very robust and durable. They can be positioned upright for tidy storage on the workshop shelf. Additional surface protection due to textile outer material. Low weight and volume for simpler mobility. "Take it easy" Tool Finder with colour coding according to sizes.



Web link

https://products.wera.de/en/zyklop_ratchets_and_accessories_the_zyklop_ratchets_the_zyklop_ratchets_1_4_the_zyklop_metal_ratchet_push_1_4_8100_sa_10.html

Wera - 8100 SA 10
 05004020001 - 4013288173904

Wera Werkzeuge GmbH
 Korzter Straße 21-25
 D-42349 Wuppertal
 Tel: +49 (0)2 02 / 40 45-0
 E-Mail: info@wera.de

8100 SA 10 Zyklop Metal Ratchet Set with push-through square, 1/4" drive, imperial, 28 pieces

The Zyklop Metal Ratchet Push, 1/4"



Set contents:



8003 A
05004003001 1 x 1/4" x 141 mm



8790 HMA
05003514001 1 x 3/16" x 23 mm
05003515001 1 x 7/32" x 23 mm
05003516001 1 x 1/4" x 23 mm
05003517001 1 x 9/32" x 23 mm
05003518001 1 x 5/16" x 23 mm
05003519001 1 x 11/32" x 23 mm
05003520001 1 x 3/8" x 23 mm
05003521001 1 x 7/16" x 23 mm
05003522001 1 x 1/2" x 23 mm



8794 LA
05003526001 1 x 1/4" x 150 mm



8794 A
05003527001 1 x 1/4" x 56 mm



8784 A1
05003529001 1 x 1/4" x 37 mm



851/1 Z PH
05072070001 1 x PH 1 x 25 mm
05072072001 1 x PH 2 x 25 mm
05072074001 1 x PH 3 x 25 mm



855/1 Z PZ
05072080001 1 x PZ 1 x 25 mm
05072082001 1 x PZ 2 x 25 mm



867/1 TORX®
05066485001 1 x TX 10 x 25 mm
05066486001 1 x TX 15 x 25 mm
05066487001 1 x TX 20 x 25 mm
05066488001 1 x TX 25 x 25 mm
05066489001 1 x TX 27 x 25 mm
05066490001 1 x TX 30 x 25 mm



840/1 Z Hex-Plus
05135074001 1 x 5/32" x 25 mm
05135075001 1 x 3/16" x 25 mm
05135079001 1 x 7/32" x 25 mm
05135076001 1 x 1/4" x 25 mm

Web link

https://products.wera.de/en/zyklop_ratchets_and_accessories_the_zyklop_ratchets_the_zyklop_ratchets_1_4_the_zyklop_metal_ratchet_push_1_4_8100_sa_10.html

Wera - 8100 SA 10
05004020001 - 4013288173904

Wera Werkzeuge GmbH
Korzter Straße 21-25
D-42349 Wuppertal
Tel: +49 (0)2 02 / 40 45-0
E-Mail: info@wera.de

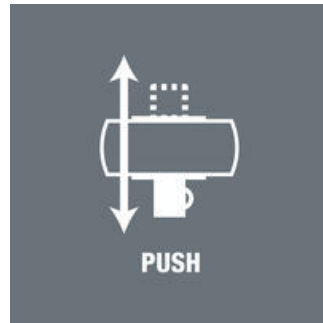
8100 SA 10 Zyklop Metal Ratchet Set with push-through square, 1/4" drive, imperial, 28 pieces
The Zyklop Metal Ratchet Push, 1/4"



Zyklop Metal Push



Due to the ever-more confined working environment, space is becoming more and more an issue for the application of ratchets. Our product developers therefore intensively occupied themselves with the issue of confined working spaces, and Wera has now solved this problem. The extremely slim and robust Zyklop Metal ratchet with a long lever was what emerged. When the socket must not get lost and a coincidental change of direction has to be avoided at all cost, the Zyklop Metal Push is the correct choice.



Due to the ever-more confined working environment, space is becoming more and more an issue for the application of ratchets. Our product developers therefore intensively occupied themselves with the issue of confined working spaces, and Wera has now solved this problem. The extremely slim and robust Zyklop Metal ratchet with a long lever was what emerged. When the socket must not get lost and a coincidental change of direction has to be avoided at all cost, the Zyklop Metal Push is the correct choice.

Slim design



Forged, full metal ratchet (chrome-molybdenum) that is extremely robust with a long service life; slim design to enable work in very confined spaces.

Square drive



Smooth push-through mechanism, that cannot get lost.

Web link

https://products.wera.de/en/zyklop_ratchets_and_accessories_the_zyklop_ratchets_the_zyklop_ratchets_1_4_the_zyklop_metal_ratchet_push_1_4_8100_sa_10.html

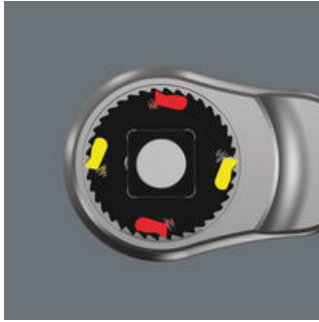
Wera - 8100 SA 10
05004020001 - 4013288173904

Wera Werkzeuge GmbH
Korzter Straße 21-25
D-42349 Wuppertal
Tel: +49 (0)2 02 / 40 45-0
E-Mail: info@wera.de

8100 SA 10 Zyklop Metal Ratchet Set with push-through square, 1/4" drive, imperial, 28 pieces
The Zyklop Metal Ratchet Push, 1/4"

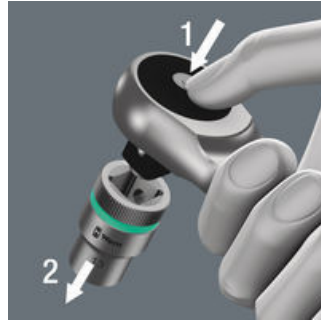


Dual ratchet teeth



The dual-ratchet-teeth design means that a 76 fine-toothing division can be achieved from the 38 robust teeth with a return angle of only 4.7°.

Ball lock



The ball lock ensures sockets and accessories are securely fitted, providing increased safety during operation. A short press on the release button allows the tool to be changed quickly.

Take it easy tool finder system



Take it easy tool finder system - with profile and size colour-coding for quick and easy tool selection. Colour-coded system for hexagon drive screws (L-Keys, Zyklop bit sockets), external hex drive screws and nuts (Joker wrenches, Zyklop sockets and Zyklop bit sockets with holding function), and TORX® drive screws (L-Keys, Zyklop bit sockets).

Textile boxes



The textile boxes offer dramatically improved portability, and are space-saving to boot! This means you can now carry the same collection of tools, in a much more compact and comfortable package. The hassle of running back and forth for the right tools has now become a thing of the past. And the much lower weight of a set makes carrying more convenient than ever before. The textile box including the tool will even survive a fall undamaged.

Web link

https://products.wera.de/en/zyklop_ratchets_and_accessories_the_zyklop_ratchets_the_zyklop_ratchets_1_4_the_zyklop_metal_ratchet_push_1_4_8100_sa_10.html

Wera - 8100 SA 10
05004020001 - 4013288173904

Wera Werkzeuge GmbH
Korzter Straße 21-25
D-42349 Wuppertal
Tel: +49 (0)2 02 / 40 45-0
E-Mail: info@wera.de