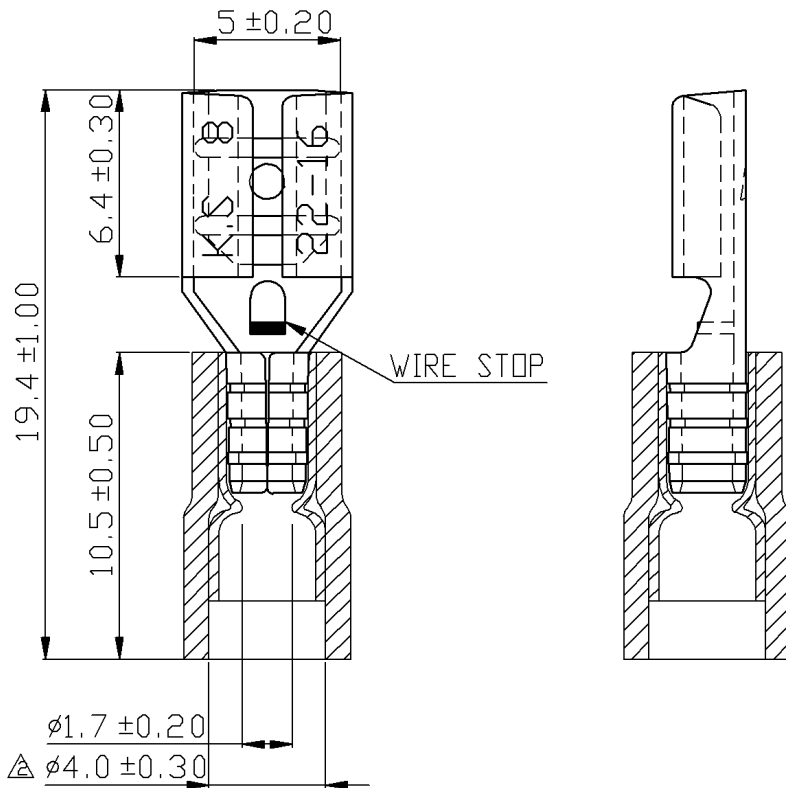
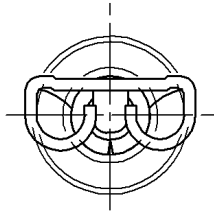


A B C D E F G H

REV	DESCRIPTION	DATE
△	RDK-96131	張馨尹 2008/01/03
△	RDK-98053	洗勝賢 2009/03/17



NOTE :

1. MAXIMUM ELECTRIC CURRENT :

A.W.G.	22	20	18	16
AMP.	3	4	7	10
2. MAXIMUM ELECTRICAL RATING : \triangle 105°C 600 VOLTS MAX.
3. INSULATION MATERIAL : VINYL
4. INSULATION COLOR : RED
5. TERMINAL MATERIAL : BRASS
6. WIRE RANGE : 22-16 A.W.G. (0.5-1.5 mm²)
7. NEMA TAB : 0.032 inch * 0.187 inch (0.8 mm * 4.75 mm)
8. DOUBLE CRIMP : WITH COPPER SLEEVE ON BARREL
9. TERMINAL SURFACE TREATMENT : TIN PLATED
10. TERMINAL THICKNESS : 0.35 mm

Tolerance Unless Otherwise Specified	
0 > 6 mm ± 0.20	ANGLE
6 > 18 mm ± 0.30	0° > ° REF ±
18 > 30 mm ± 0.40	° > ° ±
30 > 75 mm ± 0.50	° > ° ±

NAME	VINYL-INSULATED DOUBLE CRIMP FEMALE DISCONNECTORS			UNIT	
PART NO.	FDD1-187(8)	MATERIAL	-----	APPROVE	
NUMBER	KA-951304-C	SCALE	SHEET	PAGE	CHECKED
DATE	2006/09/11	4/1	1-2	10F2	DRAWN 謝婉如

KST. K.S. TERMINALS INC.

A B C D E F G H