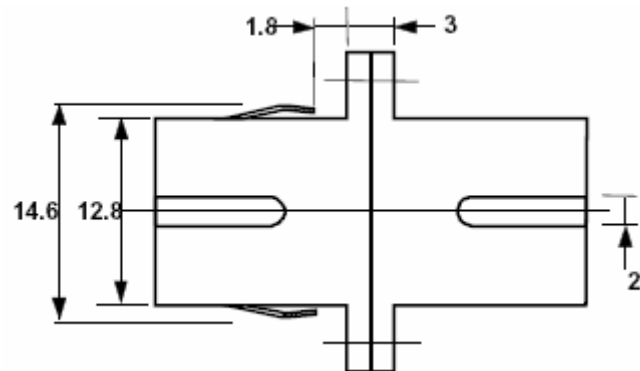
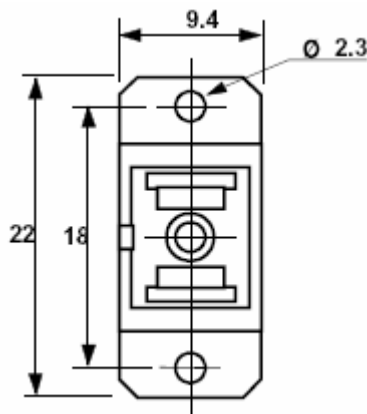
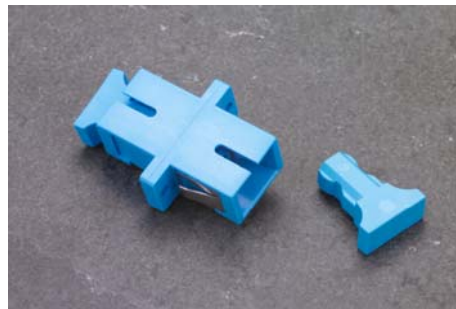
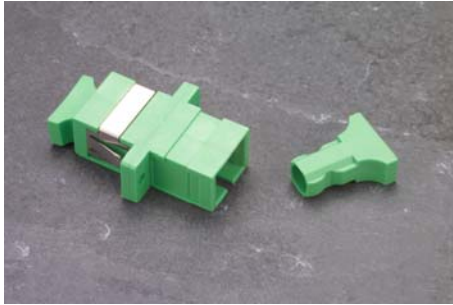


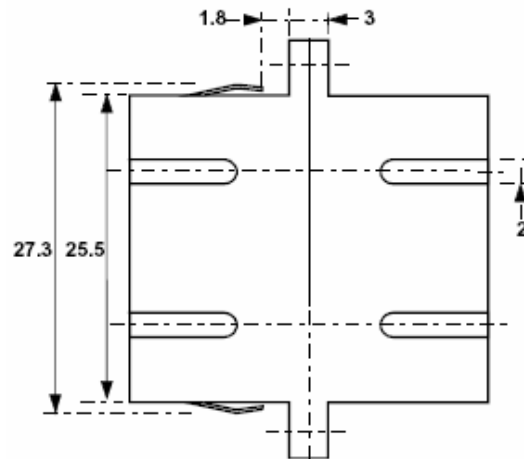
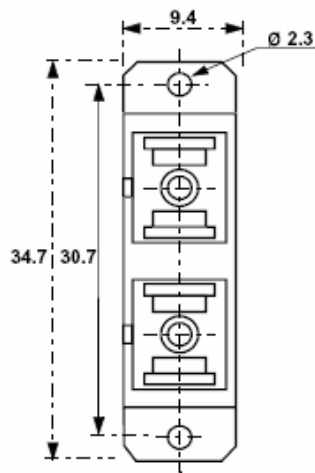
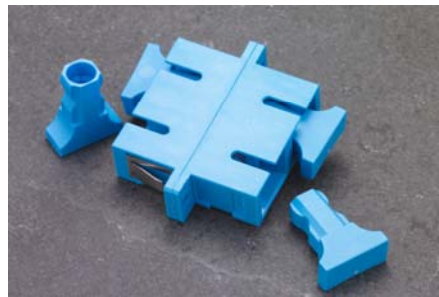
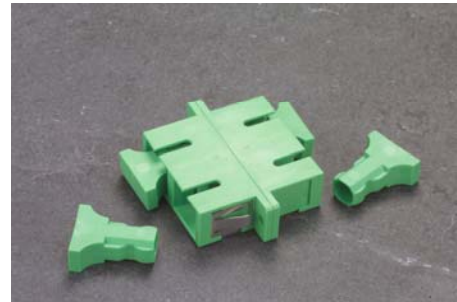
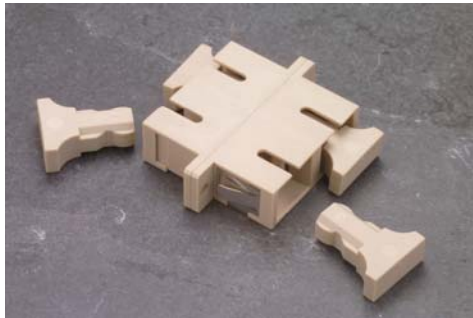
SC Adapter

An optical fibre adapter or uniter is used to mate two connectors together, usually mounted in a distribution panel or wall box. In most cases it is the critical part of the system that aligns the ferrule part of the connectors keeping the fibres in perfect alignment.

Generally there are two types of alignment sleeve within an adapter, phosphor bronze for multi-mode or zirconia (ceramic) for single mode.



The SC has connector and adapter are the most used set for modern day optical fibre systems. With the audible click locking mechanism and pull proof design this connector provides a secure interconnect.



Ordering information

SC multimode

Beige adapter

Simplex	Duplex
SCUSPHRBEIGE	SCUDPHRBEIGE

SC singlemode

Blue adapter

Simplex	Duplex
SCUSZR02	SCUDZR02

SC singlemode APC

Green adapter

Simplex	Duplex
SCAPCUGREEN	SCAPCUDGREEN

FibreFab Limited

Davy Avenue
Knowlhill
Milton Keynes
MK5 8BN

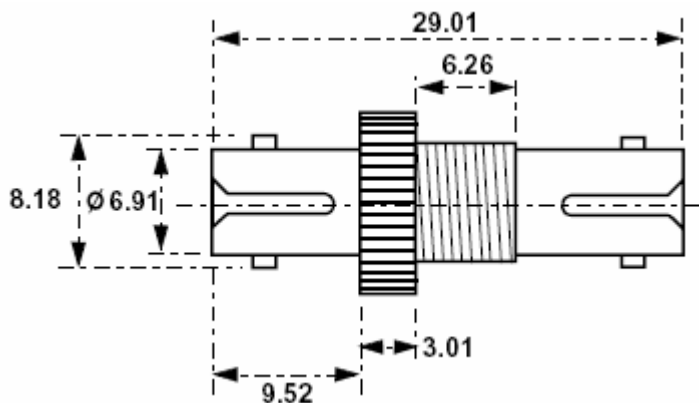
Tel: +44 (0) 870 127 3330
Fax: +44 (0) 870 127 3331
Email: sales@fibrefab.com
Internet: www.fibrefab.com

FibreFab Ltd is registered in England no. 2734823.

ST Adapter

An optical fibre adapter or uniter is used to mate two connectors together, usually mounted in a distribution panel or wall box. In most cases it is the critical part of the system that aligns the ferrule part of the connectors keeping the fibres in perfect alignment.

Generally there are two types of alignment sleeve within an adapter, phosphor bronze for multi-mode or zirconia (ceramic) for single mode.



The ST connector and adapter set the standard for optical fibre interconnects. With its simple to use bayonet locking mechanism, it preventing accidental disconnection. With the precision housing this adapter gives the very best of performance.

Ordering information

ST multimode simplex
Black caps
FibreFab Part no. STUPHBR

ST singlemode simplex
Yellow caps
FibreFab Part no. STUZR02

OPTRONICS

FibreFab Limited

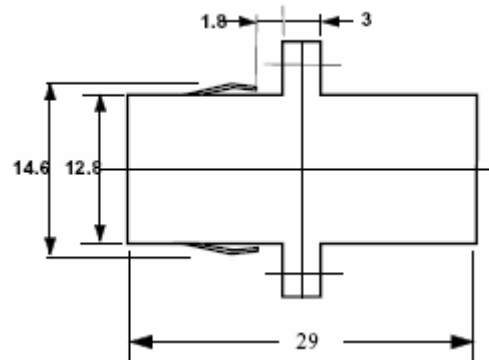
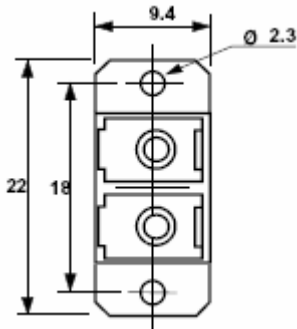
Davy Avenue
Knowlhill
Milton Keynes
MK5 8BN

Tel: +44 (0) 870 127 3330
Fax: +44 (0) 870 127 3331
Email: sales@fibrefab.com
Internet: www.fibrefab.com

FibreFab Ltd is registered in England no. 2734823.

LC Duplex Adapter

The LC connector and adapter set the standard for small optical fibre interconnects. With its simple to use latched lever locking mechanism preventing accidental disconnection and precision housing for optimum performance. The LC was also the first Small Form Factor (SFF) connector set available and offers fibre density and performance unheard before now.



Ordering Information

LC multimode duplex
Beige
FibreFab Pn. LCDPXBEIGE

LC singlemode duplex
Blue
FibreFab Pn. LCDPXBLUE

OPTRONICS

FibreFab Limited

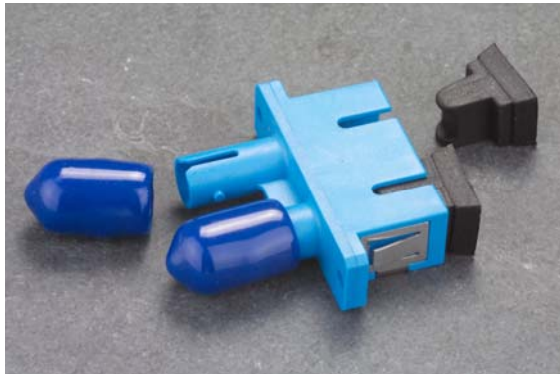
Davy Avenue
Knowlhill
Milton Keynes
MK5 8BN

Tel: +44 (0) 870 127 3330
Fax: +44 (0) 870 127 3331
Email: sales@fibrefab.com
Internet: www.fibrefab.com

FibreFab Ltd is registered in England no. 2734823.

Hybrid adapters

These adapters are for changing from different connector styles with ferrule diameter of 2.5 mm. These come in both single mode and multimode variants to suit the application purpose. They can also be either metal or plastic housing and either simplex or duplex configuration.



An optical fibre adapter or uniter is used to mate two connectors together, usually mounted in a distribution panel or wall box. In most cases it is the critical part of the system that aligns the ferrule part of the connectors keeping the fibres in perfect alignment.

Generally there are two types of alignment sleeve within an adapter, phosphor bronze for multi-mode or zirconia (ceramic) for single mode. In the case of the MT-RJ and MPO the alignment

is carried out by two small pins fitted to one of the connectors, the adapter is purely to support and lock the connectors together in the distribution panel or wall box. The range of Optronics hybrid connectors allow different styles of connectors to be connector without the use of a hybrid patch lead and adapter. These high performance devices have been designed interconnecting different styles of 2.5mm ferrule connector.

Ordering Information

SC-ST multimode duplex
Beige
FibreFab Pn.
SCSTDPHBRBEIGE

SC-ST singlemode duplex
Blue
FibreFab Pn.
SCSTUDPHBRBLUE

SC-FC singlemode simplex
Blue
FibreFab Pn.
SCFCUSPHBRBLUE

Hybrid adapters

These adapters are for changing from a 2.5 mm ferrule diameter to a 1.25 mm ferrule diameter. As more equipment is changing to the small form factor size these provide an economical solution for changing ferrule diameter. The inner sleeve of the adapter is made of phosphor bronze, which is suitable for both singlemode and multimode applications. These are available in LC to SC, LC to FC and LC to ST.



An optical fibre adapter or uniter is used to mate two connectors together, usually mounted in a distribution panel or wall box. In most cases it is the critical part of the system that aligns the ferrule part of the connectors keeping the fibres in perfect alignment.

Generally there are two types of alignment sleeve within an adapter, phosphor bronze for multi-mode or zirconia (ceramic) for single mode. In the case of the MT-RJ and MPO the alignment

is carried out by two small pins fitted to one of the connectors, the adapter is purely to support and lock the connectors together in the distribution panel or wall box. The range of Optronics hybrid connectors allow different styles of connectors to be connector without the use of a hybrid patch lead and adapter. These high performance devises have been designed interconnecting different styles of 2.5mm ferrule connector.

FibreFab Limited

Davy Avenue
Knowlhill
Milton Keynes
MK5 8BN

Tel: +44 (0) 870 127 3330
Fax: +44 (0) 870 127 3331
Email: sales@fibrefab.com
Internet: www.fibrefab.com

FibreFab Ltd is registered in England no. 2734823.