



2002-12-05

## **PRODUKTINFORMATION**

Vi reserverar oss mot fel samt förbehåller oss rätten till ändringar utan föregående meddelande

**ELFA artikelnr**

**35-820-04 Mikrobrytare F1T8GP-UL**

# F1

## Snap-action Microswitches

Ultraminiature

### F1

Characteristics ■ High electrical rating from a very small switch  
■ Gold plated contacts  
■ PCB mounting from side  
■ UL and CSA approved

Rating Up to 250 VAC, 5 A

Dimensions (mm) 16 x 6.5 x 5.7

Actuator Plunger, plain lever

Approvals UL, CSA



### Preferred Range

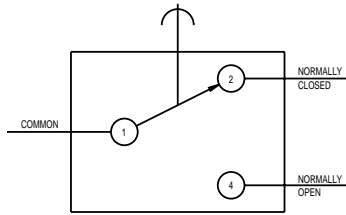
Ordering Reference	Actuating Force		Sealing	Operating pos.		Terminal	Circuit	Actuator	Contacts	Electrical rating
F1T8GPUL	1,4 N	5,00 ozf	IP40	6,35 mm	0,25 in	PCB	CO	Plunger	Gold plate	Up to 250 VAC, 5 A
F1T8Y1GPUL	0,5 N	1,8 ozf	IP40	8,5 mm	0,33 in	PCB	CO	Lever	Gold plate	Up to 250 VAC, 5 A

# F1

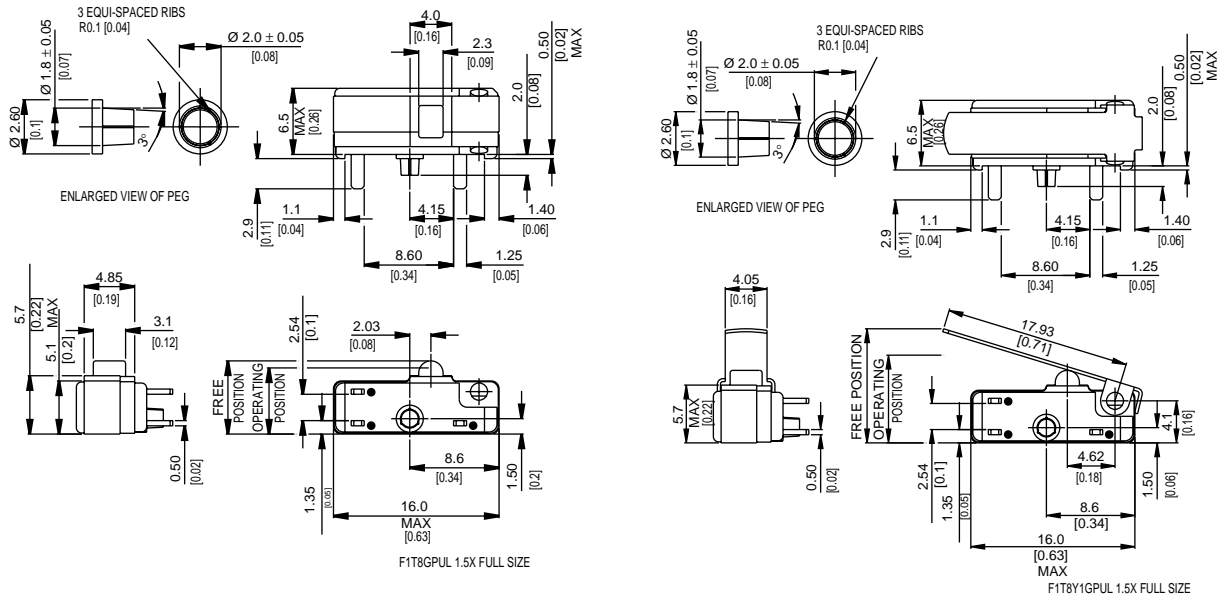
## Specifications

■ Housing	Glass fibre reinforced nylon
■ Plunger	Nylon
■ Mechanism	Snap-action, coil spring mechanism with stainless steel spring
■ Functions	Single pole change-over
■ Contacts	Gold plate on silver
■ Terminals	PCB - copper, gold-flashed
■ Temperature range °C	-40° C to +85° C
■ Mechanical life	10 <sup>6</sup> cycles minimum (impact-free actuation)
■ Protection	IP40 (enclosure)
■ Mounting	Side mount PCB with locating pin on housing
■ Actuators	Plain plunger, straight lever

### Circuit diagram



### Dimensions



### Recommended maximum electrical ratings

Voltage (max)	Resistive load A	Inductive load	Horsepower	Approval
250 VAC	5 (0.75 pf)	5		UL 1054/CSA 22.2 No. 55 - 6.000 operations
0 - 15 VDC	5			General rating - 50,000 operations
15 - 30 VDC	10	10		General rating - 50,000 operations

F1 switches have gold-plated silver contacts.

Switches with gold-plated contacts are intended for use in circuits where switching is at milliwatt levels.

In this case, the power being switched must be limited to avoid the erosion of gold plate from the contact area.

However, as the underlying contacts are silver, the same power ratings apply.

# F1

## Operating Characteristics

Actuator	Reference	Actuating Force Maximum		Release Force Minimum		Free Position Maximum		Operating Position		Movement Differential Maximum		Over Travel	
		N	ozf	N	ozf	mm	in	mm	in	mm	in	mm	in
Plunger	F1T8GPUL	1.4	5.00	0.28	1.00	7.1	0.28	6.35 ± 0.38	0.25 ± 0.015	0.1	0.004	Plunger can be depressed flush with housing. The housing should not be used as an end stop.	
Straight lever	F1T8Y1GPUL	0.5	1.8	0.06	0.022	11.0	0.43	8.5 ± 1.5	0.33 ± 0.06	0.5	0.02	Plunger can be depressed flush with housing. The housing should not be used as an end stop.	
		Width of lever 4.05 mm/0.16 in											

## Ordering Reference

	F1	
Terminals	T8	PCB
Circuit	No symbol	Change-over
Actuators	No symbol	Plunger
	Y1	Plain lever
	YR1	Roller lever
Contacts	GP	Gold plate on silver
Approvals	UL	UL and CSA