

**Pushbutton, opaque, mounting hole diameter 16.2 mm, 1 NO,
 black**
1.10.102.001/0104

General information

Colour of lens	opaque black
Form of lens	protruding lens
Form of collar	round

Dimensions

Overall height	9 mm
Diameter of collar	20 mm
Mounting depth	41 mm
Mounting hole	16.2 mm

Electrical characteristics

Contact resistance when new max.	100 mΩ
Rated voltage AC max.	250 V
Rated current max.	2 A

Mechanical characteristics

Robustness min.	100 N
Operating force max.	7.5 N
Operating travel	4.3 mm
Switching travel NO	2.2 mm
Switching travel NC	---

Mechanical design

Terminals	screw terminals
Mounting	ring nut
Illuminability	no
Contact arrangement	1 NO
Contact function	momentary
Contact system	bridge contact
Contact materials	Ag
Lamp socket	no

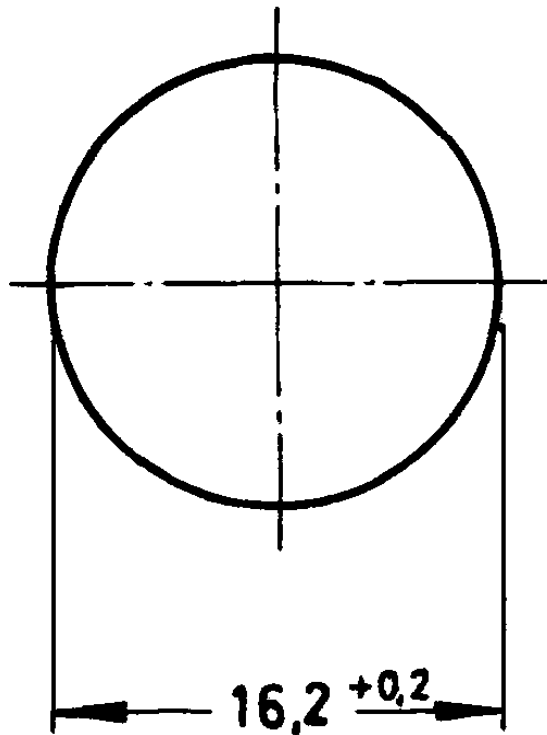
Other specifications

Approvals	ENEC 25 T 85
Ambient temp. operating max.	+85 °C
Ambient temp. operating min.	-25 °C
Flame class acc. to UL 94	V 0
Weight	11 g
Hot wire ignition acc. to IEC 60695-2-1	yes
Resistance to constant environment	according to IEC 600 68-2-3 and 2-30
Storage temperature max.	+90 °C
Storage temperature min.	-40 °C
Operating life	150000
Degree of protection from front side	IP40 (IP65 with sealing cap)

Resistance at variable environment

according to IEC 600 68-2-14 and 2-33

Frontpanel cut-out



MASS

