 <h1 style="margin: 0;">WANJIA</h1> <p style="margin: 0;">Relays for advanced technology</p>	<h2 style="margin: 0;">GENERAL PURPOSE RELAY</h2>	<h2 style="margin: 0;">WJ152-SERIES</h2>
--	---	--



- **Small size and light weight.**
- **Low coil power consumption.**
- **High contact load.**
- **Strong anti-shock high reliability.**

**SPECIFICATIONS**

**Contact**

Arrangement	2C,3C	4C
Contact Material	Silver Alloy	
Contact Resistance (By voltage drop 6V 1A)	Max. 100mΩ	
Rating		
Resistive load (Cos.Φ=1)	5A 250VAC	3A 250VAC
General Purpose (Cos.Φ=0.75~0.8)	5A 28VDC	3A 28VDC
	2A 250VAC	1A 250VAC
Rated Carrying Current	5A	3A
Max. Allowable Voltage	110VDC/240VAC	
Max. Allowable Current	5A	3A
Max. Allowable Power force	600VA/150W	360VA/90W
Referencial Min.Load	10VDC 10mA	
Expected life(min.ope)		
Mechanical(at 120 cpm)	1 × 10 <sup>6</sup>	
Electrical (at 20 cpm)	1 × 10 <sup>5</sup>	

**Characteristics**

Operate Time	Max.25 msec.	
Release Time	Max.25 msec.	
Operating humidity	45 to 85% RH	
Initial breakdown voltage		
Between coil & contact	1500VAC (50/60Hz)for 1 Min.	
Between open contacts	1000VAC (50/60Hz)for 1 Min.	
Insulation Resistance	Min.100MΩ (500 VDC)	
Ambient temperature	-25C~ +55C	
Shock Resistance	Functional	Min.10G
	Destruction	Min.100G
Vibration Resistance	Functional	10 to 55 Hz at double Amplitude of 1.5mm
	Destruction	10 to 55 Hz at double Amplitude of 1.5mm
Unit weight	40g Max.	

**Coil**

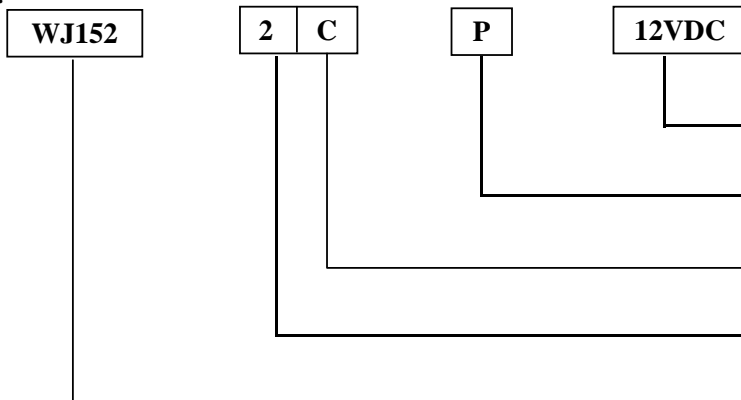
Nominal operating power	0.9W to 1.2VA
-------------------------	---------------

**TYPICAL APPLICATION**

- 1.Industrial Machines
- 2.Electrical Equipments
- 3.Air conditioner and Household appliance

**ORDERING INFORMATION**

e. g.



Coil Voltage:  
 DC: 6, 12, 24, 48, 110V  
 AC: 6, 12, 24, 48, 110/120, 220/240VAC

Terminal Type: P- P.C.B.  
 T- Plug-in      F- Plug-in with Flange Cover

Contact Arrangement:  
 1A: SPST-NO    1B: SPST-NC    1C: SPDT

Contact Poles:  
 1 - 1 Pole, 2 - 2 Poles, 3 - 3 Poles, 4- 4 Poles

Relay Series

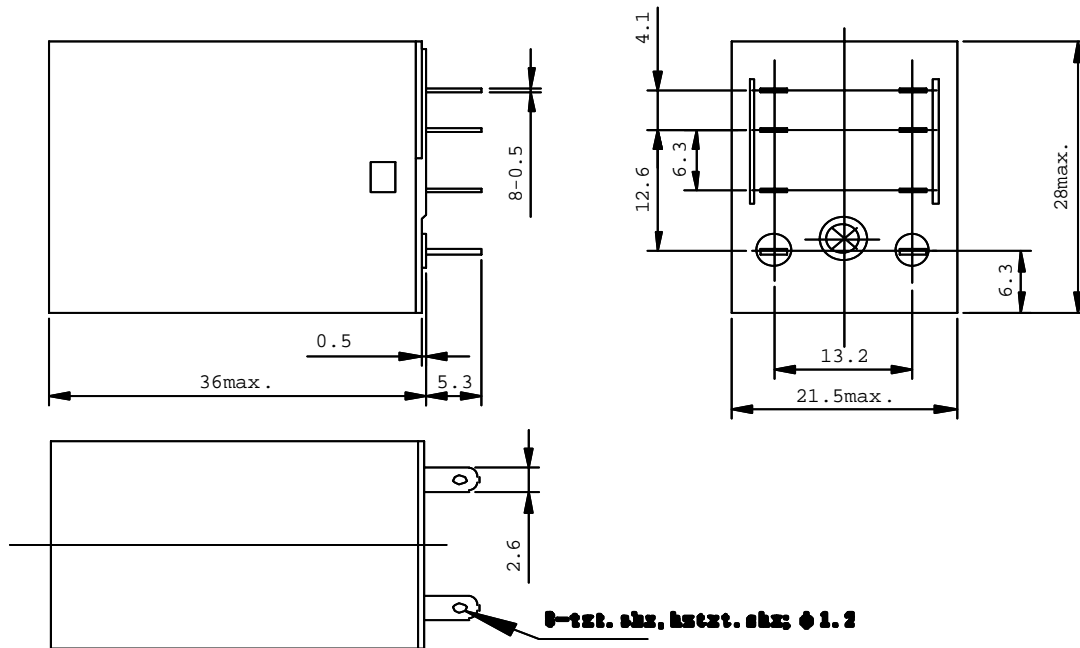
**COIL DATA (at 20C)**

Type	Nominal Voltage (VDC)	Norminal Current (mA)		Coil Resistance (Ω)±10%	Power Consumption (W)	Pull-in Voltage (VDC)	Drop-out Voltage (VDC)	Max.Allowable Voltage (VDC)
		50Hz	60Hz					
AC	6	220	170	10	abt. 1.0 to 1.3 VA (60Hz)	80% Max.	30% Min.	110%
	12	110	85	43				
	24	60	45	160				
	48	30	23	600				
	110	14	12	3400				
	120	13,5	11,5	3400				
	220/240	6	5	13600				
DC	6	150		40	abt. 0.9W	80% Max.	10% Min.	110%
	12	75		160				
	24	36,9		650				
	48	18,5		2600				
	110	10		11000				

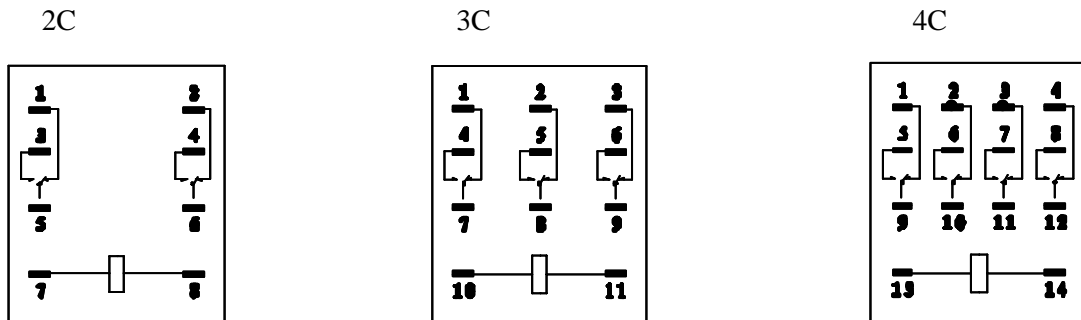
**DIMENSIONS**

Unit: mm

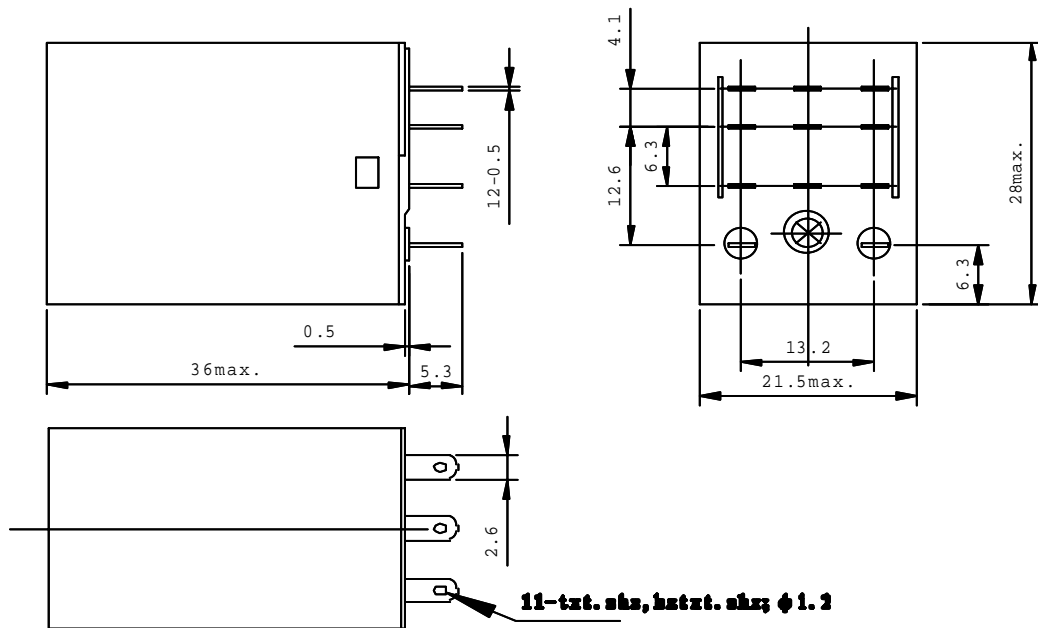
**WJ152-2Pole plug-in terminal**



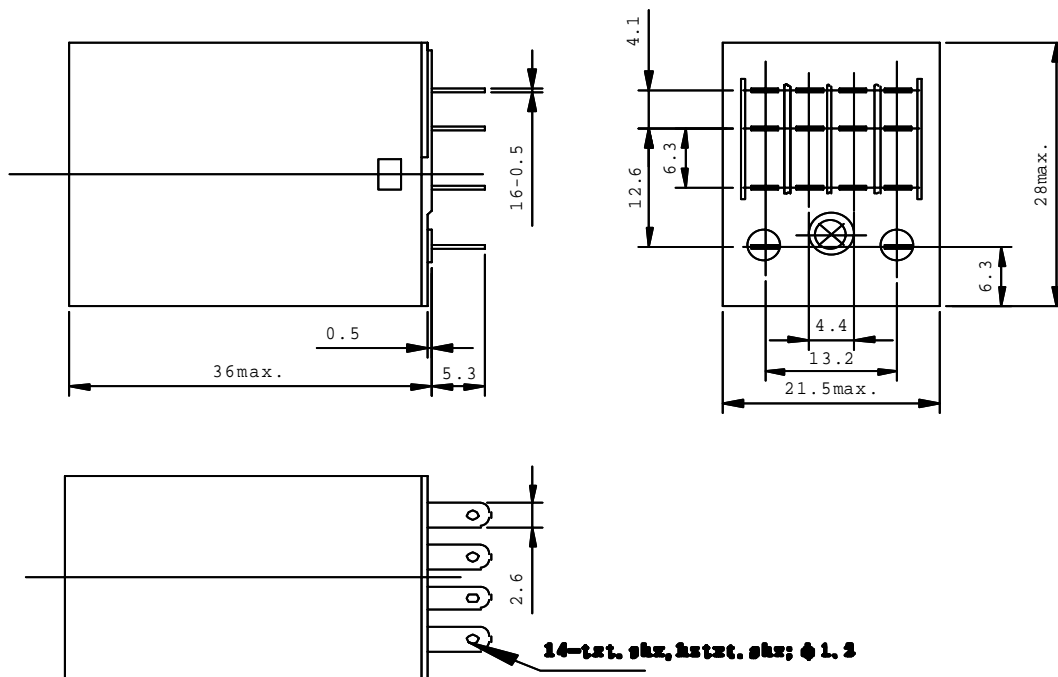
Wiring Diagram



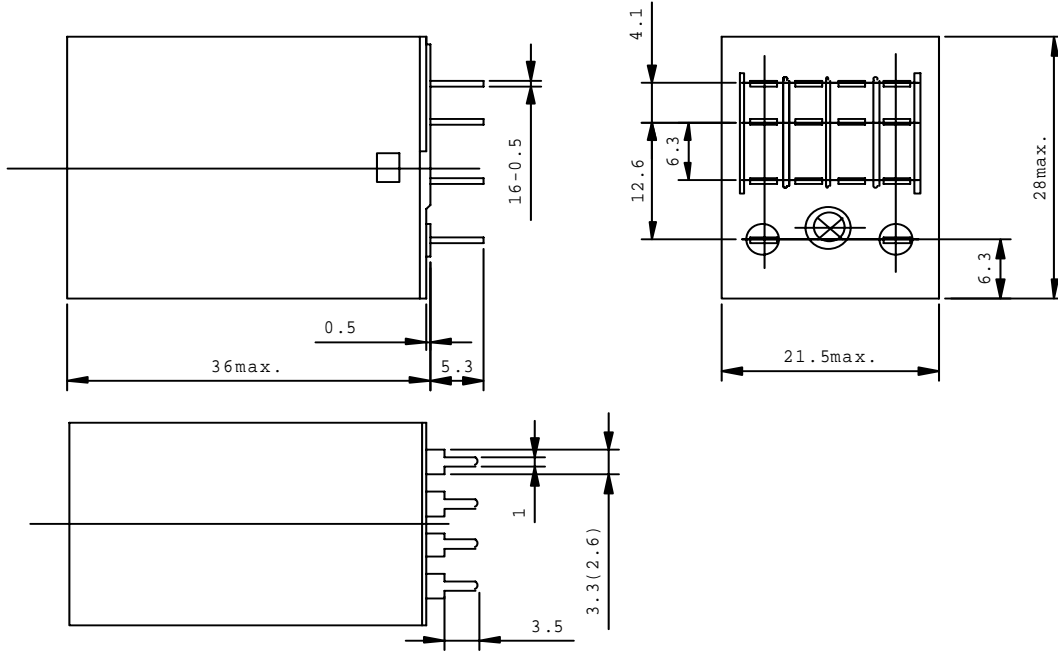
### WJ152-3Pole plug-in terminal



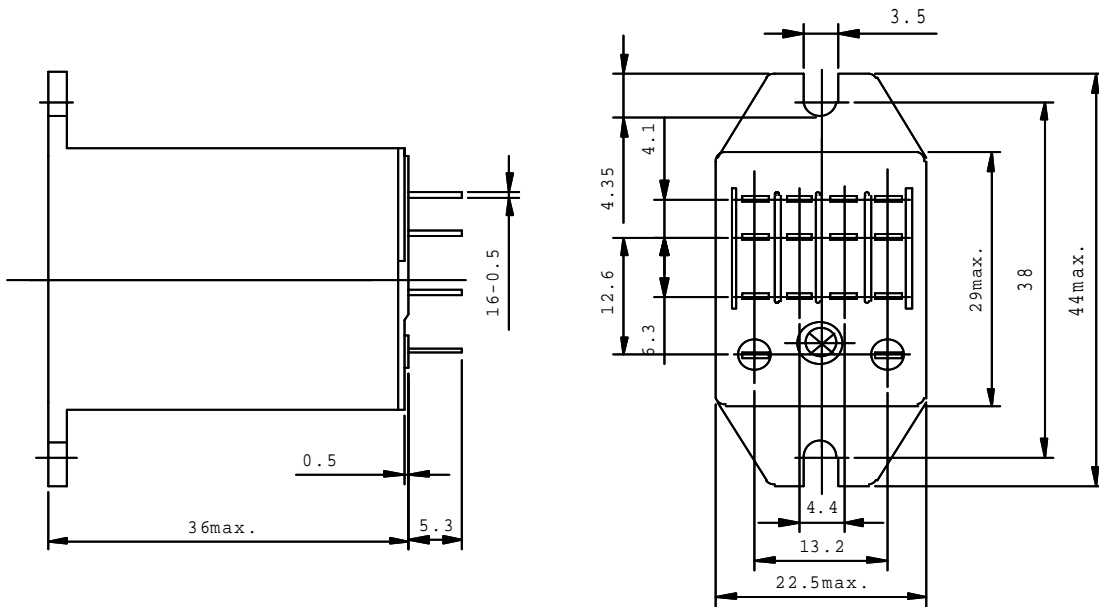
### WJ152-4Pole plug-in terminal



**WJ152-2Pole P.C. Board terminal**  
**WJ152-3Pole P.C. Board terminal**  
**WJ152-4Pole P.C. Board terminal**



**WJ152-2Pole Flange case and Plug-in terminal**  
**WJ152-3Pole Flange case and Plug-in terminal**  
**WJ152-4Pole Flange case and Plug-in terminal**



### Mounting holes (Bottom view)

