

ATMEGA 3D PRINTER MAINBOARD

Order code: VM8400MB

Open source ATmega-based board for 3D-printers, soft material CNC routers, engravers, etc... Universal, high quality and easy to use. Use the mainboard with the Velleman VM8400DB, DRV8825 stepper driver boards.

Features:

Outputs:

- X, Y, Z, E1 and E2 stepper motors
- E1 and E2 heater
- heated bed
- 2 x fan
- 2 x unregulated DC output

Inputs:

- X, Y and Z end stops
- E1, E2 and heated bed sensor
- power supply screw connector
- power supply 2.1/5.5 mm DC jack
- reset button

I/O for:

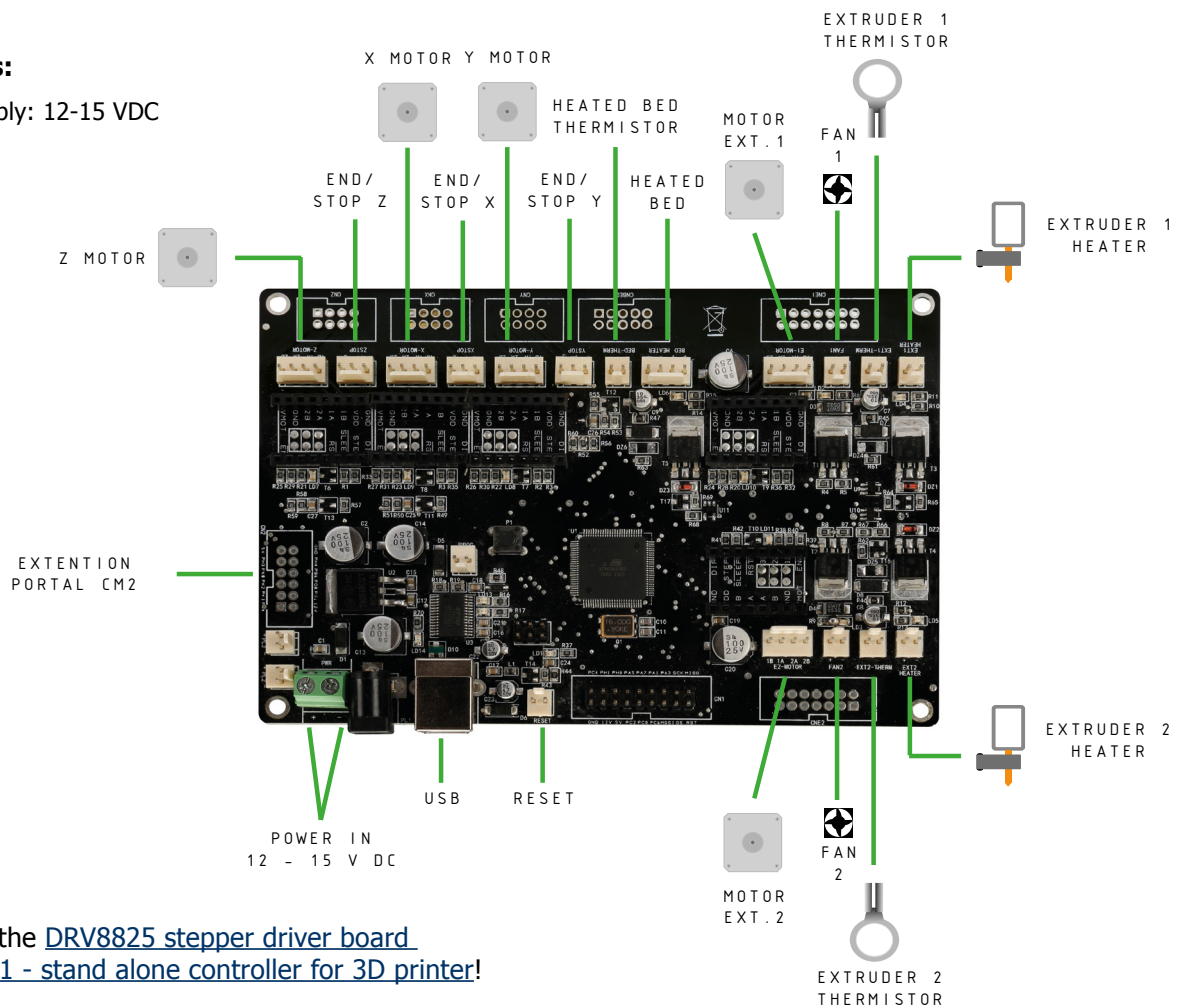
- LCD display
- rotary encoder with pushbutton
- SD-card holder
- custom external circuitry
- in-circuit programming

Also provided:

- status LEDs
- on-board RESET-button
- male board-to-wire connectors
- space for optional IDC male header connectors

Specifications:

- power supply: 12-15 VDC



Also available: the [DRV8825 stepper driver board](#) and the [VM8201 - stand alone controller for 3D printer!](#)