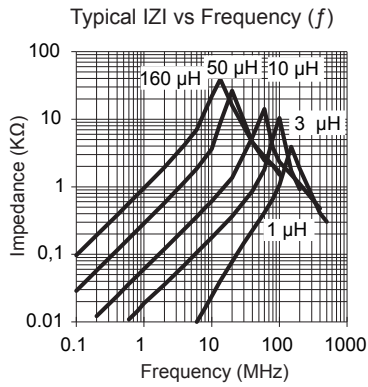
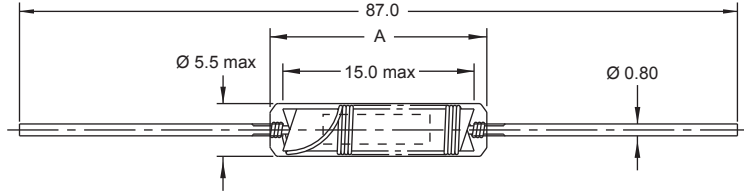




**SMSC** 



L (μH)	A (max)
1 - 23	17
50 - 160	19



Part No	Inductance	f <sub>L</sub>	Tol	DCR	Rated DC
	L (μH)	(kHz)	± (%)	max (mΩ)	Current (A)
SMSC-1R0M-01	1	1000	20	14	6
SMSC-2R0M-01	2	1000	20	24	4
SMSC-3R0M-01	3	1000	20	46	3
SMSC-6R0M-01	6	1000	20	144	2
SMSC-100M-01	10	1000	20	276	1.5
SMSC-230M-01	23	100	20	876	0.7
SMSC-500M-01	50	100	20	3600	0.4
SMSC-700M-01	70	100	20	5400	0.3
SMSC-161M-01	160	100	20	21600	0.15

Single layer

Core Material : Iron Dust

Revision date : 09 May 2017

SPQ :

Packing Form	Taped / Reel
Axial	1500 [-01]

**Remarks :**

- Available also without insulating material (SMSC/B).
- Single layer - Model with Insulation Foil are suitable for Application in "Power Line", rated voltage 230V AC (Testvoltage 500V DC).

Suppression Coils