

Rittal – The System.

Faster – better – everywhere.

Mounting plate for GA – GA 9116.700

Date : Mar 7, 2019

ENCLOSURES

POWER DISTRIBUTION

CLIMATE CONTROL

IT INFRASTRUCTURE

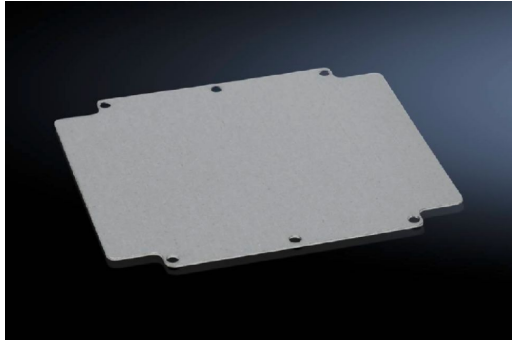
SOFTWARE & SERVICES

FRIEDHELM LOH GROUP



Mounting plate for GA – GA 9116.700

created: 07.03.2019 on www.rittal.com/com-en



Product description

Description: For universal interior installation, with mounting holes.

Material: Sheet steel

Surface finish: Zinc-plated

Product features

To fit: Enclosure type: GA
Width: = 202 mm
Height: = 232 mm

Mounting plate: Width: 183 mm
Height: 214 mm

Packs of: 1 pc(s).

Weight/pack: 1.18 kg

EAN: 4028177154360

Customs tariff number: 73269098

ETIM 6.0: EC000213

ETIM 5.0: EC000213

eCl@ss 8.0/8.1: 27409216

| | |
|-----------------------------|-----------------------------------|
| eCl@ss 7.0/7.1: | 27189234 |
| eCl@ss 6.0/6.1: | 27189234 |
| eCl@ss 5.1/5.1.4: | 27189234 |
| Product description: | GA Mounting plate, WH: 183x214 mm |