

Rittal – The System.

Faster – better – everywhere.

Door-operated switch – SZ 4127.010

Date : Jul 29, 2020

ENCLOSURES

POWER DISTRIBUTION

CLIMATE CONTROL

IT INFRASTRUCTURE

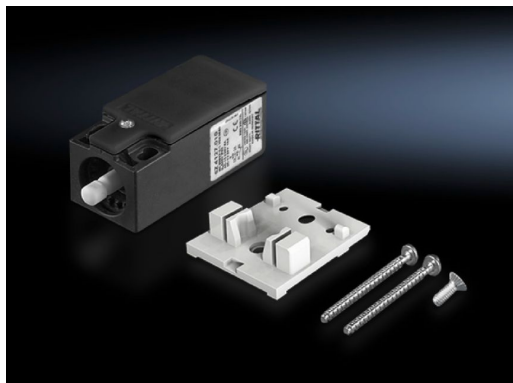
SOFTWARE & SERVICES

FRIEDHELM LOH GROUP



Door-operated switch – SZ 4127.010

created: 29.07.2020 on www.rittal.com/com-en



Product description

Design: Without connection cable

Product features

Rated operating voltage: 400 V

Installation options: for LED system light
for standard and courtesy light without integral door-operated switch
for cooling units and air/water heat exchangers

For rated current (max.): 240 V AC, 6 A

Rated insulation voltage: 400 V AC

Rated impulse withstand voltage, phase to phase: 6000 V AC

Packs of: 1 pc(s).

Weight/pack: 0.08 kg

Copper weight (kg per piece): 0

EAN: 4028177497740

Customs tariff number: 85365080

ETIM 7.0: EC002626

ETIM 6.0:	EC002626
eCl@ss 8.0/8.1:	27189266
eCl@ss 6.0/6.1:	27119116
Product description:	SZ Door-operated switch, with accessory for interior installation, without connection cable
Approvals	
Approvals:	CCC CSA UL
Certificates:	EAC
Declarations:	Declaration of conformity