

# Series 1007/G

- Test probe for cable harness testing
- Screwable - threaded design
- Screwing tools available

## Mechanical Data

|                                |                |
|--------------------------------|----------------|
| Center                         | 1.27 mm/50 mil |
| Full Travel                    | 5.00 mm        |
| Working Travel                 | 4.00 mm        |
| Pre-loaded Spring Force        | 0.20 N         |
| Spring Force at Working Travel | 1.10 N         |

## Electrical Data

|                               |            |
|-------------------------------|------------|
| Max. Current Rating           | 3.0 A      |
| Typical Continuity Resistance | <= 50 mOhm |

## Materials

|            |                           |
|------------|---------------------------|
| Barrel     | Bronze, gold plated       |
| Spring     | Spring Steel, gold plated |
| Plunger    | CuBe, gold plated         |
| Receptacle | Bronze, gold plated       |

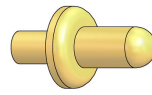
## Recommended Diameter of Drill

|                      |         |
|----------------------|---------|
| HP 2361.1 (Trolitax) | 0.99 mm |
| HGW 2372             | 1.00 mm |

## Tip style - Diameter - Plating



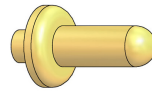
| B        | C        | D        | F        |
|----------|----------|----------|----------|
| 0.40C Au | 0.90C Au | 0.64C Au | 0.64C Au |



| Tip Styles | Tip diameter mm A | Plate Diameter mm B | Tip Length mm C | Overall length mm D | Extension Height mm E |
|------------|-------------------|---------------------|-----------------|---------------------|-----------------------|
| D7001      | 0.60              | 1.00                | 1.80            | 29.70               | 11.30                 |

D7001

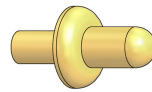
0.60C Au



| Tip Styles | Tip diameter mm A | Plate Diameter mm B | Tip Length mm C | Overall length mm D | Extension Height mm E |
|------------|-------------------|---------------------|-----------------|---------------------|-----------------------|
| D7002      | 0.60              | 1.00                | 2.60            | 30.50               | 12.10                 |

D7002

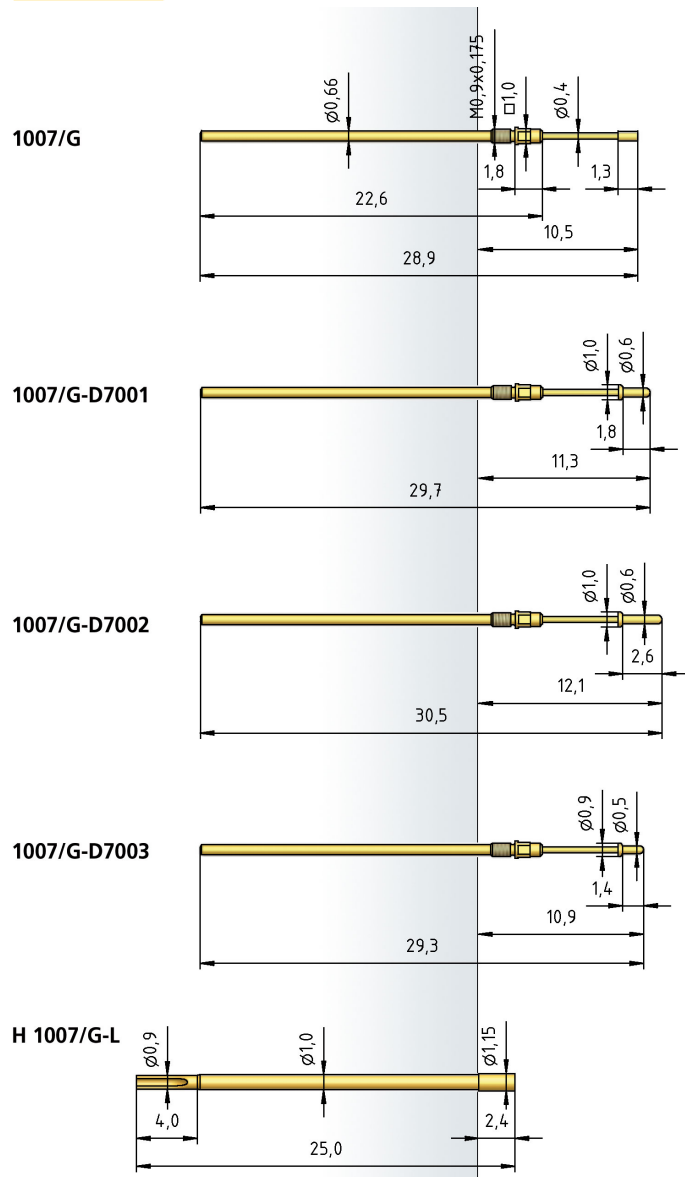
0.60C Au



| Tip Styles | Tip diameter mm A | Plate Diameter mm B | Tip Length mm C | Overall length mm D | Extension Height mm E |
|------------|-------------------|---------------------|-----------------|---------------------|-----------------------|
| D7003      | 0.50              | 0.90                | 1.40            | 29.30               | 10.90                 |

D7003

0.50C Au



## How to Order

1007/ G B 1.1 N Au 0.4 C

1 2 3 4 5 6 7

- Series
- Threaded Design
- Tip Style
- Spring Force
- Tip Plating
- Tip Diameter
- Tip Material (only for CuBe)