

**Laserliner®** Innovation in Tools

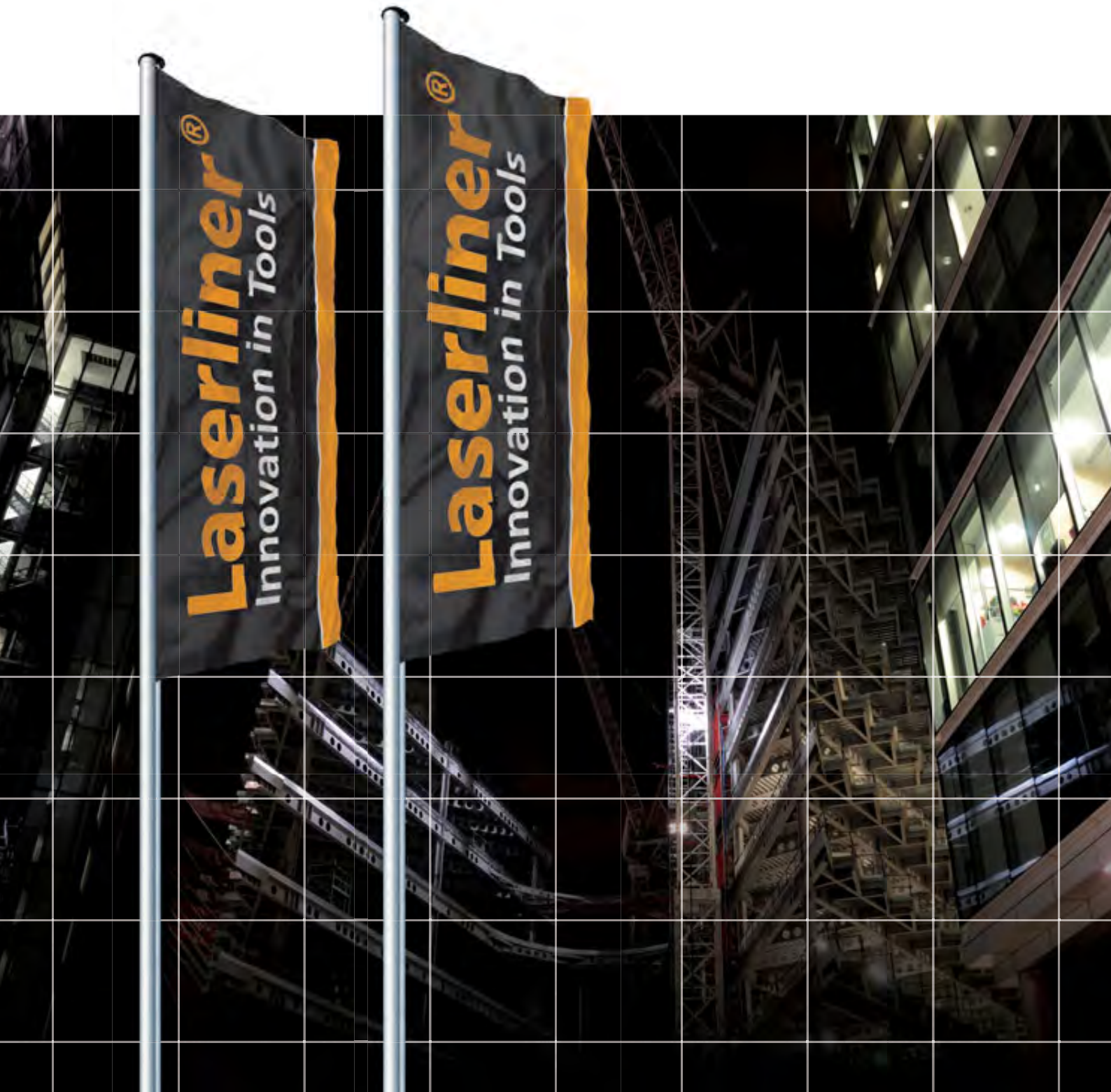
# Modern Measuring Technology

## Complete range 2011

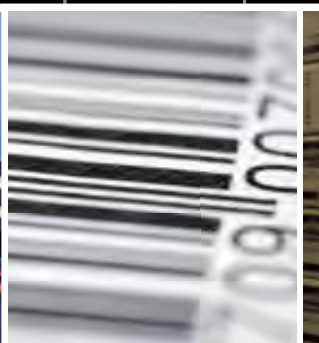




Quality. Service. Know-how.



Laserliner – UMAREX Headquarters in Arnberg





## Your Premium Partner. More than 15 Years Expertise.

Laserliner is a competent partner around the world. Allow yourself to be convinced by our large assortment – rotary lasers, cross and line lasers, moisture and building inspection tools, range finders, electronic locating devices, spirit levels and angle gauges.

- Product presentation supported by working displays, touch-screen information desk, showcases, attractive packaging and much more.
- International and national exhibition presence
- Product and service training



- Quick delivery service
- Professional product and sales consulting
- Quality testing with certificate



### Always up to date – Our online service

A service you can rely on: always providing the latest information about technology and specialist areas of application. A quick and user-friendly means of providing you with all the information you need.

### Press and Test – Online product demonstration

Use the product videos you can find on the Press and Test section of our website to learn the possibilities of our products and how they can be used.

For more detailed information, go to [www.laserliner.com](http://www.laserliner.com).



# Leading branded products in Modern Measuring Technology



**IQ** **Industrial Quality** – The profi-products have been developed for continous professional use.

**PT** **Professional Technology** – Extensive product assortment for demanding end-users and building professionals.

The modern measuring tools marketed under the Laserliner brand name stand out because of their numerous technical innovations and high quality: rotary lasers with single-slope or anti-shake functions for professional use, line lasers with PowerBright technology to improve visibility and range. All lasers are optic-electronically calibrated and inspected to be within tolerances. Furthermore, a quality certificate comes with every industrial quality product.





# CONTENTS

## Material moisture measurement

Wood and construction moisture

6



## Professional cross-line laser

Interior finishing and building

50



## Measuring temperature and ambient conditions

Contact, spatial and IR temperature measurement, assessment of ambient conditions

14



## Universal rotary laser

Tough and versatile for interior finishing and building construction

62



## Video inspection

Observation and recording in difficult to reach places

19



## Rotary laser for outdoor areas

Widely used in construction above and below ground

70



## Electrical meters

Voltage tester, multimeter and cable detectors

22



## Precision Altimeter

Floor and foundation work

79



## Electronic Scanners

Metal, beam and line finding devices

28



## Systainer®

Transporting, storing, stapling

81



## Slope indicators

Digital spirit levels, angle gauges

32



## Automatic Levelling Instruments

Multipurpose devices for the building site

85



## Distance measurer

for building and construction

36



## Tripods, levelling staffs and fasteners

The basis for sound work with laser instruments and levellers

88



## Point, line and cross-line lasers

Room design and interior furnishings

40



## Laserliner Shop

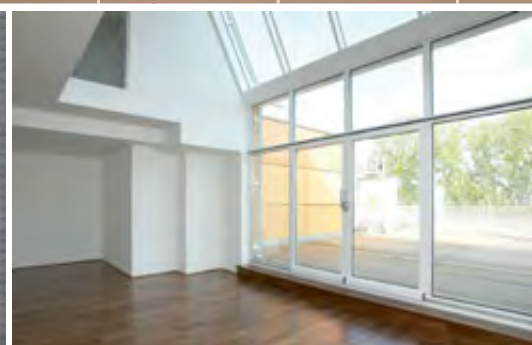
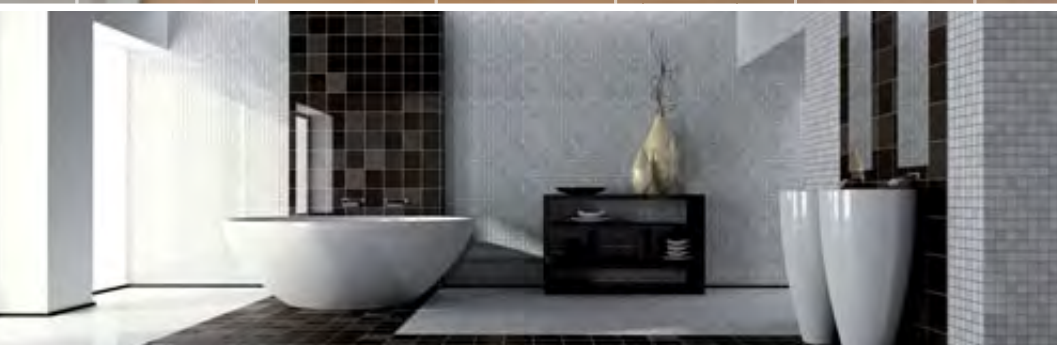
Holsters and pockets for tools, advertising material and textiles

94





# Material moisture measurement





# WOOD AND CONSTRUCTION MOISTURE

Protection against moisture is a major problem in buildings. Early detection of building and materials moisture contribute to the sustained protection and preservation of building fabric. Moisture assessment and localisation with suitable instruments is essential for this.

Non-destructive material moisture detection using the capacitive measuring method, ensures measurement results are obtained effortlessly and quickly: without damaging the surface during and especially after the construction phase. Measuring instruments utilising the precision measuring concept are used to determine the moisture in various building materials. This measuring method provides very accurate results.

## Powerful technology



Multi-Material Deepscan with % display



Sturdy rubber casing – Ergonomically formed for secure grip



Two flexible measuring plates on the bottom of the device ensure the material surface is not damaged.



Protective cap with self-test function



12-position wet/dry LED indicator



High degree of accuracy thanks to selectable material groups



Intelligent building moisture measurement Without damaging the surface – measures on floor, wall and ceiling



Conversion table with many different types of timber and building materials





Moisture measuring devices

Overview



TYPES OF WOOD:

	WoodTester	DampFinder	DampFinder Plus	DampMaster / DampMaster Plus	MoistureFinder	MoistureMaster
Ash	•	–	•	•	•	•
Alder	•	–	•	•	–	•
Amer. mahogany	–	–	•	•	•	–
Beech	•	•	•	•	•	•
Birch	•	•	•	•	•	•
Cedar	–	–	•	•	•	•
Douglas fir	–	–	•	•	–	–
Ebony	•	–	•	•	–	–
Elm	–	–	•	•	–	•
European larch	–	–	•	•	–	–
Linden	•	–	•	•	•	•
Maple	•	–	•	•	–	•
Pedunculate oak	•	•	•	•	•	•
Redwood	–	–	–	–	–	•
Robinia	–	–	–	–	–	•
Scots pine	–	–	•	•	•	–
Spruce	•	•	•	•	•	•
Teak	–	–	•	•	–	•
White meranti	–	–	–	–	–	•
Willow	•	–	•	•	–	•
Many other types in the conversion table	–	–	–	•	–	•

BUILDING MATERIALS:

Aerated concrete	–	•	•	•	–	•
Anhydrite screed	–	–	–	•	–	•
Ardurapid cement screed	–	–	–	•	–	–
Cement bonded chipboard	–	–	•	•	–	–
Cement mortar	–	–	•	•	–	–
Cement screed	–	•	•	•	•	•
Cement screed with bitumen additive	–	–	–	•	–	–
Cement screed with plastic additive	–	–	–	•	–	–
Chalky sandstone	–	–	–	–	–	•
Concrete	–	•	•	•	–	•
DIN magnesium oxychloride flooring	–	–	–	•	–	–
Elastizel screed	–	–	–	•	–	–
Expanded polystyrene	–	–	•	•	–	–
Gypsum screed	–	–	–	•	–	–
Plaster	–	•	•	•	•	•
Softboard (wood) with bitumen	–	–	–	•	–	–
Wood cement screed	–	–	–	•	–	–
Wood cement screed	–	–	•	•	–	–
INDEX mode	–	–	–	•	–	•

Material moisture measuring instrument for professional use

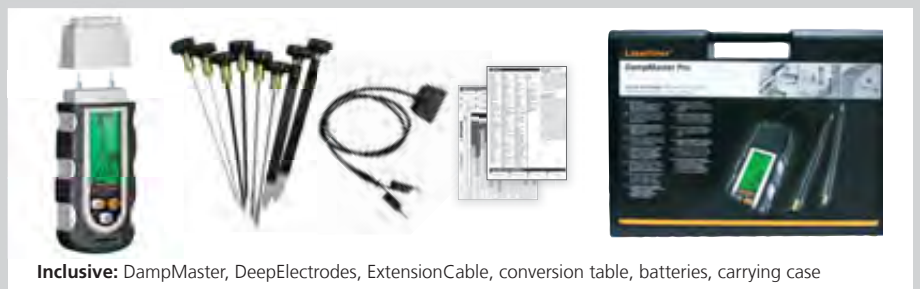
Laserliner instruments are available in sturdy carrying bags or hard-shell cases.



SOFT: softbag  
Quick to use and handy on site.



HARD: plastic carry case –  
Practical, always ready for use



Inclusive: DampMaster, DeepElectrodes, ExtensionCable, conversion table, batteries, carrying case



## Moisture measuring devices

### MoistureFinder

NEW



**Professional material moisture measurement – quick and non-destructive**

- Non-destructive measurement of material moisture by capacitive measurement. The tested material is not damaged.
- Simple handling: select material type then place the instrument on the material's surface to determine moisture content in %.
- 4 selectable material characteristics: soft woods (e.g. spruce, pine, linden), hard woods (e.g. beech, oak, birch), plaster and screed.
- LED wet/dry indicator provide immediate measurement results for moisture content in the tested material.

**Measuring range / Accuracy:**

- Cement screed: 0%...4,5% / ± 0,5%
- Gypsum plaster: 0%...9% / ± 0,5%
- Softwood: 0%...52% / ± 2% (6%...30%)
- Hardwood: 0%...32% / ± 2% (6%...30%)

**Inclusive:** MoistureFinder, battery

ORDER NO.	EAN-CODE	PU
082.032A	4 021563 671120	5

PT



### MoistureMaster

NEW



**Professional material moisture measurement – quick and non-destructive**

- Non-destructive measurement of material moisture by capacitive measurement. The tested material is not damaged.
- 62 selectable material characteristics: 56 wood and 6 building material types (cement screed, anhydrite screed, gypsum plaster, aerated concrete, concrete, lime malm brick)
- Index mode
- Quick localisation of moisture: comparison measurements can be made in index mode to reveal increasing or decreasing moisture based on a neutral scale.
- LED wet/dry indicator provide immediate measurement results for moisture content in the tested material.
- Menu system with 22 languages
- Illuminated, transparent display

**Measuring range / Accuracy:**

- Cement screed: 0%...4,5% / ± 0,5%
- Anhydrite screed: 0%...3,1% / ± 0,5%
- Gypsum plaster: 0%...9% / ± 0,5%
- Aerated concrete: 0%...48% / ± 1%
- Concrete: 0%...5% / ± 0,5%
- Lime malm brick: 0%...10% / ± 0,5%
- Wood: 0%...60% / ± 2% (6%...30%)

**Inclusive:** MoistureMaster, battery, softbag

ORDER NO.	EAN-CODE	PU
082.033A	4 021563 671137	5

IQ



### MoistureMaster + CondenseSpot Pro Combi-Set

NEW



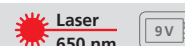
**Set for early detection and assessment of material moisture and condensation.**

- Non-destructive measurement on over 100 different materials
- Determines surface and dew point temperature
- Locating thermal bridges
- Product description same as above and on Page 16

**Inclusive:** MoistureMaster, CondenseSpot Pro, batteries, carrying case

ORDER NO.	EAN-CODE	PU
082.033-1	4 021563 674275	2

IQ



Moisture measuring devices

WoodTester

NEW



Compact wood moisture instrument

- Checks the degree of dryness in firewood to conserve energy and reduce emissions.
- Dual scale for most commonly used types of firewood
- Simple one-button operation
- Stable, ergonomic housing
- Measurement:
  - Range, wood group A (beech, linden, willow, ebony) 8 %...23%
  - Range, wood group B (pedunculate oak, maple, alder, spruce, ash) 10 %...26 %
- Accuracy: ± 2%

Inclusive: WoodTester, protective cap with self-test function, battery

ORDER NO.	EAN-CODE	PU
082.005A	4 021563 672370	5

PT

9V

DampFinder



Universal device for testing moisture in wood and building materials

- Suitable for moisture detection in soft building materials like gypsum or plaster; especially for quick checks in woodworking and for firewood
- Dual scale (wood and building material moisture)
- Illuminated, transparent display
- Measuring range / accuracy relative material moisture:
  - Wood: ± 1% (6 ... 30%)
  - Building materials: ± 0,5% (0,2 ... 2,2%)

Inclusive: DampFinder, batteries

ORDER NO.	EAN-CODE	PU
082.010A	4 021563 664955	5

PT

3 x CR 2032

DampFinder Plus



Universal device for testing moisture in wood and building materials

- Suitable for moisture detection in soft building materials like gypsum or plaster; especially for quick checks in woodworking and for firewood
- An external hand-held electrode has been added specifically for use with hardwoods or soft building materials.
- A conversion table is supplied with the device so that moisture in selected woods and construction materials can be determined.
- Dual scale (wood and building material moisture)
- Illuminated, transparent display
- Measuring range / accuracy relative material moisture:
  - Wood: ± 1% (6 ... 30%)
  - Building materials: ± 0,5% (0,2 ... 2,2%)

Inclusive: DampFinder, HammerProbe, conversion table, batteries, carrying case

ORDER NO.	EAN-CODE	PU
082.011A	4 021563 668243	2

PT

3 x CR 2032

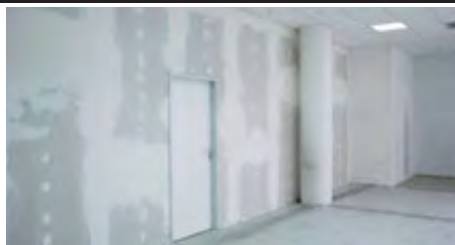
HARD



Moisture measuring devices



DampMaster



Professional test instrument for moisture in wood, plaster and building materials

- Integrated characteristics for 7 material groups increase the accuracy of measurements.
- The wet/dry indicator evaluates and interprets measurements with respect to the given material.
- The housing's protective rubber case equips this device for tough professional usage.
- Illuminated, transparent display
- Measuring range / accuracy:  
Wood: 0% ... 30% / ± 1%, 30% ... 60% / ± 2%, 60% ... 90% / ± 4%  
Other materials: ± 0.5%

Inclusive: DampMaster, batteries, softbag

ORDER NO.	EAN-CODE	PU
082.020A	4 021563 664962	5



3x  
CR 2032

SOFT

DampMaster Plus



Professional test instrument for moisture in wood, plaster and building materials

- Integrated characteristics for 7 material groups increase the accuracy of measurements.
- The wet/dry indicator evaluates and interprets measurements with respect to the given material.
- The housing's protective rubber case equips this device for tough professional usage.
- The external hand-held electrode is particularly useful for hardwoods or soft building materials.
- Illuminated, transparent display
- Measuring range / accuracy:  
Wood: 0% ... 30% / ± 1%, 30% ... 60% / ± 2%, 60% ... 90% / ± 4%  
Other materials: ± 0.5%

Inclusive: DampMaster, HammerProbe, conversion table, batteries, carrying case

ORDER NO.	EAN-CODE	PU
082.021A	4 021563 664979	2



3x  
CR 2032

HARD

Moisture measuring devices



DampMaster Pro



- DampMaster and DampExtension set**
- Integrated characteristics for 7 material groups increase the accuracy of measurements.
  - The wet/dry indicator evaluates and interprets measurements with respect to the given material.
  - The housing's protective rubber case equips this device for tough professional usage.
  - Illuminated, transparent display
  - Measuring range / accuracy:  
Wood: 0% ... 30% / ± 1%, 30% ... 60% / ± 2%, 60% ... 90% / ± 4%  
Other materials: ± 0.5%
  - Includes DeepElectrodes and ExtensionCable

**Inclusive:** DampMaster, DeepElectrodes, ExtensionCable, conversion table, batteries, carrying case

ORDER NO.	EAN-CODE	PU
082.025A	4 021563 670451	2

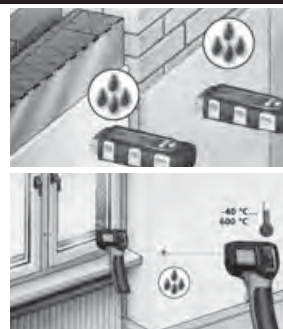
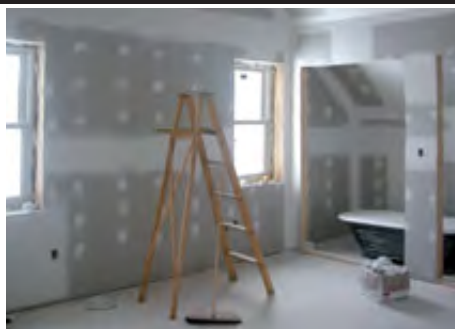


3x CR 2032



DampMaster + CondenseSpot Pro Combi-Set

NEW



- Professional material moisture and laser/infrared temperature measuring instrument in case set**
- Ideal for assessing building material moisture and condensation
  - Product description same as on Page 11 and 16

**Inclusive:** DampMaster, conversion table, CondenseSpot Pro, batteries, carrying case

ORDER NO.	EAN-CODE	PU
082.045-1	4 021563 673476	1



3x CR 2032

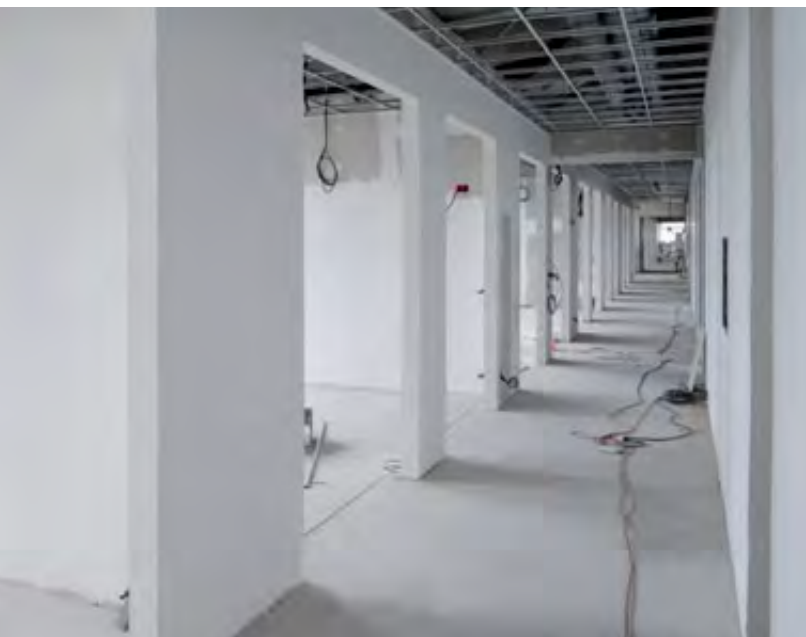


9V





# Moisture measuring devices



## DampExtension



### DeepElectrodes and ExtensionCable set

- Depth electrodes for a wide and varied selection of applications
- Connection via ExtensionCable
- 2 x non-insulated metal electrodes: for moisture measurements in building and insulating materials
- 2 x insulated metal electrodes: for moisture measurements in multi-layer wall or ceiling structures
- 2 x insulated flat electrodes: for moisture measurements in concealed material layers, specifically for wall-ceiling transition
- 2 x brush electrodes: for moisture measurements in homogeneous building materials without direct contact mass



For DampFinder and DampMaster only.

**Inclusive:** DeepElectrodes, ExtensionCable

ORDER NO.	EAN-CODE	PU
082.026A	4 021563 671380	2



## HammerProbe



### Robust external hand-held electrode

- Particularly well suited for use with hardwoods and soft building materials
- Featuring an ergonomic grip for easy insertion into the material to be measured.



For DampFinder and DampMaster only.

ORDER NO.	EAN-CODE	PU
082.024	4 021563 666591	5



## Electrodes



### Replacement measuring spikes for HammerProbe, DampFinder / DampMaster / WoodTester

- Long measuring spikes:
- HammerProbe: 15 mm
- DampFinder / DampMaster / WoodTester: 10 mm

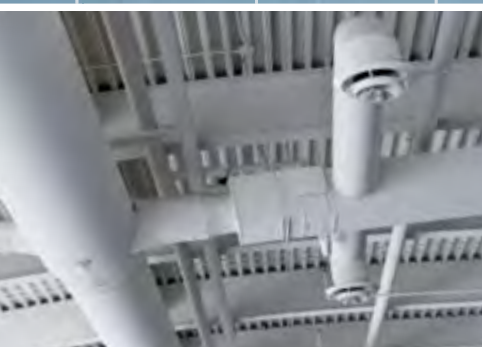


**Inclusive:** electrodes, 4 pieces

	ORDER NO.	EAN-CODE	PU
HammerProbe	082.024.1	4 021563 666607	5
DampFinder / DampMaster / WoodTester	082.020.1	4 021563 666249	10



# Measuring temperature and ambient conditions





Temperature measuring instruments



ThermoMaster

NEW



- Digital thermometer with contact thermocouple for use in laboratories and industry**
- Large temperature measuring range: -50 °C ... 1300 °C
  - Dual K-type inputs for thermocouple for direct differential measurement of two temperatures
  - Two flexible thermocouples for a wide range of industrial applications
  - The MAX function determines when limit values are exceeded during prolonged measuring procedures
  - Fold-out base for laboratory use
  - 1/4" stand connection for flexible arrangement in stationary setups
  - Tough enclosure with rubber guard
  - Illuminated, clearly arranged display

Available in April 2011.



**Display range / Accuracy:**  
-50 °C ... 1300 °C / ± 0,5%  
**ThermoProbe K measuring range**  
-50 °C ... 200 °C

**Inclusive:** ThermoMaster, 2x ThermoProbe K thermocouple, battery, carrying case

ORDER NO.	EAN-CODE	PU
082.035A	4 021563 676293	2



ThermoSensor Air

NEW



- K-type temperature sensor for measuring air and gas temperature**
- Heat resistant handle
  - Temperature sensor protected by metal sleeve (ø 6,5 mm)
  - Sensor length: 165 mm
  - Measuring range: -50 °C to 800 °C, accuracy class 2

For ThermoMaster and ThermoSpot-Vision only.

Available in April 2011.

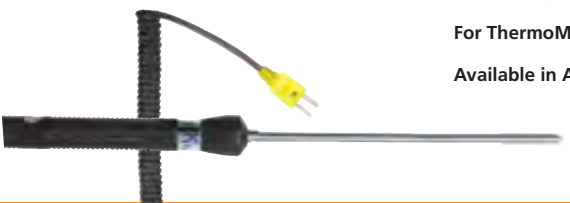


ORDER NO.	EAN-CODE	PU
082.035.1	4 021563 676309	2



ThermoSensor Tip

NEW



- K-type temperature sensor for inserting in soft, highly viscous materials**
- Heat resistant handle
  - Sensor length: 165 mm
  - Measuring range: -50 °C to 1300 °C, accuracy class 2

For ThermoMaster and ThermoSpot-Vision only.

Available in April 2011.

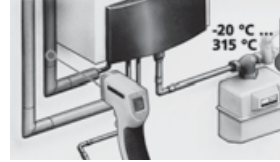
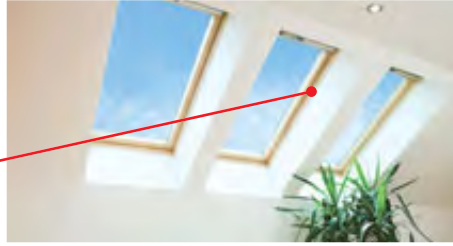


ORDER NO.	EAN-CODE	PU
082.035.2	4 021563 676316	2



IR temperature measuring instruments

**ThermoSpot Laser**



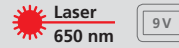
**Non-contact infrared temperature instrument with integrated laser**

- This non-contact measuring method is ideal for taking temperature measurements at locations that are difficult to access.
- It can also be used to take measurements in hazardous zones, such as where there are moving machine parts or in electrical installations
- Emission ratio: 0,95
- Lens: 8:1

**Infrared measuring range:** -20 °C ... 315 °C  
**Accuracy:** -10 °C ... 60 °C ± 1,5 °C; ± 2 °C or ± 2% depending on the higher value

**Inclusive:** ThermoSpot Laser, battery

ORDER NO.	EAN-CODE	PU
082.040A	4 021563 664993	5



**ThermoSpot Pro Laser**



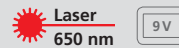
**Non-contact infrared temperature instrument with integrated laser**

- This non-contact measuring method is ideal for taking temperature measurements at locations that are difficult to access.
- It can also be used to take measurements in hazardous zones, such as where there are moving machine parts or in electrical installations
- Large temperature measurement range (-40 °C ... 600 °C)
- Emission ratio: 0,10 ... 0,99 (adjustable)
- Max. function: The highest value is displayed, if required.
- Lens: 8:1
- Illuminated display

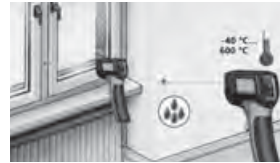
**Infrared measuring range:** -40 °C ... 600 °C,  
**Accuracy:** ± 1 °C (-10 °C ... 60 °C); ± 1.5 °C (< 10 °C and > 60 °C) oder ± 1.5 % depending on the higher value

**Inclusive:** ThermoSpot Pro Laser, battery, softbag

ORDER NO.	EAN-CODE	PU
082.041A	4 021563 665013	5



**CondenseSpot Pro**



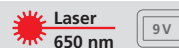
**Non-contact, infrared temperature instrument for localising thermal bridges and condensation moisture**

- With integrated laser for measured surface targeting
- Additional relative humidity measurement (20 % ... 90 %), assessment of dew point and ambient temperature
- Large temperature measurement range (-40 °C ... 600 °C)
- Emission ratio: 0,10 ... 0,99 (adjustable)
- Bar graph condense water indicator
- Min./Max./Avg. display: the smallest, largest or average value will be displayed.
- Lens 8:1
- Illuminated display

**Infrared measuring range:** -40 °C ... 600 °C  
**Accuracy:** ± 1 °C (-10 °C ... 60 °C); ± 1.5 °C (< 10 °C and > 60 °C) oder ± 1.5 % depending on the higher value  
**Ambient temperature:** -10 °C ... 60 °C  
**Accuracy:** ± 2 °C  
**Hygrometer:** 20% ... 90% relative air humidity  
**Accuracy:** ± 3.0%  
**Dew point assessment:** -20 °C ... 60 °C

**Inclusive:** CondenseSpot Pro, battery, softbag

ORDER NO.	EAN-CODE	PU
082.045A	4 021563 665020	2





# IR temperature measuring instruments

In many applications the infrared temperature measurement with integrated moisture sensors has become indispensable wherever it is necessary to safely determine surface temperatures or detecting harmful thermal bridges. An extensive range of accessories and functions enable complete documentation.

All measured data can be stored together with images or video sequences – the sound foundation for professional evaluation and fault analysis.



### Display

All relevant measured data shown in on-screen video image for direct assessment of measuring situation.

- E = Emission coefficient
- AT = Ambient Temperature
- DP = Dewpoint
- RH% = Relative humidity
- WB = Wet Bulb
- MIN = Minimum
- MAX = Maximum
- DIF = Difference
- AVG = Average

= Surface temperature of infrared measurement

a: date, time, battery status, laser active, infrared measurement stopped, high/low alarm function



## ThermoSpot-Vision

NEW



### Contactless temperature and moisture measuring instrument with real-time video image and memory function for perfect documentation

- Precision infrared thermometer with large measuring range: -50 °C ... 1000 °C
- Real-time video display of measuring point with all relevant data
- Measuring point marked by dual laser and target mark in display for exact object pinpointing
- Adjustable emission coefficient with material display
- Integrated sensors for humidity and ambient temperature to assess room climate (Dew point assessment)
- Additional K-type thermocouple connection for contact temperature measurement
- High-grade infrared optics: 50:1
- Visual and acoustic high/low alarm function
- Min./Max./Avg./Dif. display: Display of minimum, maximum, average and differential value.
- Playback function for image and video recordings
- All measured data recorded in internal memory or on micro SD card
- Powerful li-ion rechargeable battery
- USB interface

Available in April 2011.

- Infrared:** -50 °C ... 1000 °C
- Accuracy: ± 1,0 % / ± 1 °C (20 °C ... 500 °C)  
± 1,5 % (500 °C ... 1000 °C)
- Measuring rate:** 150 ms
- Spectral sensitivity:** 8 ... 14µm
- Ambient temperature:** 0 °C ... 50 °C
- Accuracy: ± 0,5% ± 0,5°C (10 °C ... 40 °C)
- Relative air humidity:** 0% ... 100% rH
- Accuracy: ± 3,0 %rH (40 % ... 60 %rH)
- Dew point temperature:** -20 °C ... 50 °C
- Accuracy: ± 0,5 °C (10 °C ... 40 °C)
- K-type sensor:** -50 °C ... 1350 °C
- Genauigkeit: ± 0,5 % ± 1,5 °C (0 °C ... 1350 °C)
- Emission coefficient:** 0,10 ... 1,0 adjustable

DS-Ratio: 50:1

**Inclusive:** ThermoSpot-Vision, lithium ion battery, USB cable, software, carrying case

ORDER NO.	EAN-CODE	PU
082.080A	4 021563 676361	2



2,2" colour TFT REC jpg/avi DUAL Laser Li-ion Battery 320 x 240 Pixel USB MICRO 1/4"



Instruments for environmental factors



SoundTest-Master

NEW



Noise level measuring instrument with integrated long-term storage

- Measurement of noise levels with frequency weighting filter according to dB (A) and dB (C) standard curves
- Selectable time weighting factors (fast 125 ms/slow 1 s) for optimum adaptation to noise dynamics
- Long-term recording function with 16000 storage points or real-time logging on PC
- Selectable analogue indicator for visual assessment
- Calibrated and adjusted by means of standard 94 dB/1 kHz noise level calibrator
- Sensitive electret condenser microphone with detachable wind guard
- Analogue outputs: DC and AC
- PC software
- Illuminated, transparent display

Available in April 2011.



Measuring range / Accuracy:  
30 ... 130 dB (A,C) / ± 1,5 dB

Inclusive: SoundTest-Master, battery, carrying case

ORDER NO.	EAN-CODE	PU
082.070A	4 021563 676330	2



MultiTest-Master

NEW



Universal measuring device for detecting environmental conditions in the home, office and industry

- For measuring ambient temperature, relative humidity, air flow and wind speed, lighting intensity (Lux), ambient sound pressure level (dB (A) and dB (C) as per IEC 61672)
- Calculates the minimum, maximum and average values from the measured data
- Hold function
- The housing's protective rubber case equips this device for tough professional usage.
- Illuminated, transparent display



Ambient temperature

Measuring range: -10 °C... 60 °C, Accuracy: ± 1,5 °C

Relative humidity

Measuring range: 0 ... 100% r.H., Accuracy: ± 3% / 25 °C

Sound pressure level

Measuring range: 30 ... 130 dB (A,C), Accuracy: ± 1,5 dB

Illuminance

Measuring range: 0...50 Klux, Accuracy: ± 5%

Wind speed

Measuring range: 0,5 ... 20 m/s, Accuracy: ± 3%

Air flow

Measuring range: 0 ... 999,9 CMM m/s, Accuracy: ± 3%

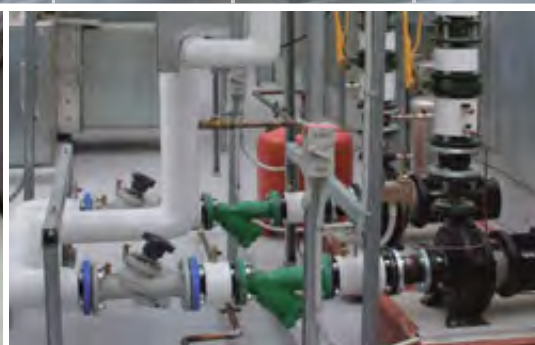
Inclusive: MultiTest-Master, battery, carrying case

ORDER NO.	EAN-CODE	PU
082.060A	4 021563 671946	2





# Video inspection



# Digital endoscopes

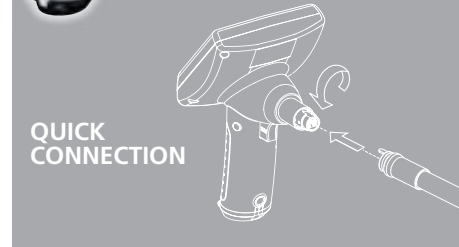
## VideoFlex



**Compact inspection camera for visual inspections of areas which are difficult to access, featuring record function**

- The camera head on the flexible cable transmits images directly to the LC monitor.
- Bright LED lighting means that the camera is able to provide clear still images and video recordings even when lighting conditions are at their poorest.
- The compact camera head is small enough to inspect even inaccessible areas.
- Multilingual on-screen display
- Direct data transfer to PC
- FlexCamera can be replaced to suit application
- Camera head: ø 17 mm, Screen size: 3,0"

**VideoFlex XL**  
Optional: Systainer® version, Page 84



**Inclusive:** VideoFlex, FlexCamera 1 m with Scope Focus 25 cm, USB Cable, 2 GB SD Card, batteries, softbag

**1 m**  
VERSION  
Focus 25 cm



**VideoFlex SD**

ORDER NO.	EAN-CODE	PU
082.050A	4 021563 665426	2



**2 m**  
VERSION  
Focus 25 cm



**VideoFlex XL**  
as above with 2 m FlexCamera with 25 cm scope focus

082.056A	4 021563 670208	2
----------	-----------------	---

1280 x 960 pixel REC USB ZOOM 3x LED LIGHT 2 GB IP 67 4x AA



## VideoScope

NEW



**Compact inspection camera for visual inspections of areas which are difficult to access**

- The camera head on the flexible cable transmits images directly to the LC monitor.
- Bright LED lighting means that the camera is able to provide clear video images even when lighting conditions are at their poorest.
- The compact camera head is small enough to inspect even inaccessible areas.
- Manual image rotation by 180° on the monitor
- Camera head: ø 17 mm



**Inclusive:** VideoScope with ScopeCamera 1 m / Focus 25 cm, batteries



ORDER NO.	EAN-CODE	PU
082.058A	4 021563 672387	2



640 x 480 pixel ZOOM 2x LED LIGHT 180° 2.7" LCD IP 67 4x AA



## Digital endoscopes



### FlexCamera 1 m / 2 m Scope Focus 25 cm



Universal camera head has a fixed focus length of 25 cm

- Suitable for both short-distance and long-distance applications
- Camera head: ø 17 mm
- Either 1 m or 2 m length available

For VideoFlex only.

ORDER NO.	EAN-CODE	PU
-----------	----------	----

1 m	082.050.1A	4 021563 668724 5
-----	------------	-------------------

2 m	082.053A	4 021563 668830 5
-----	----------	-------------------

1280 x 960 pixel

LED LIGHT

IP 67



### FlexCamera 1 m NearScope Focus 5 cm / WideScope Focus 50 cm



Camera head has a fixed focus length of 5 / 50 cm

- Suitable for short-distance applications / long-distance applications
- Camera head: ø 17 mm

For VideoFlex only.

NearScope Focus 5 cm

WideScope Focus 50 cm

ORDER NO.	EAN-CODE	PU
-----------	----------	----

NearScope Focus 5 cm	082.051A	4 021563 668700 5
----------------------	----------	-------------------

WideScope Focus 50 cm	082.052A	4 021563 668823 5
-----------------------	----------	-------------------

1280 x 960 pixel

LED LIGHT

IP 67



### FlexExtension 1 m



Extension

- Extends the range of the VideoFlex SD FlexCamera for a wider action radius and makes it easier to pick up objects located at greater depths.

For VideoFlex only.

ORDER NO.	EAN-CODE	PU
-----------	----------	----

FlexExtension 1 m	082.054A	4 021563 668847 5
-------------------	----------	-------------------





# Electrial meters





# BUILDING INSTALLATIONS AND ELECTRICAL SYSTEMS

The right electrical tester for all applications.  
The user guide provides an overview of electrical test segments and working ranges.



Working ranges	AC-tiveFinder	AC-tiveTester	AC-tiveMaster	MultiMeter-Pocket	MultiMeter-Compact	MultiClamp-Meter Pro	LAN CableChecker	AC-Tracer	CableTracer Pro
<b>Detecting AC</b>	24 - 1000 V contactless	-	110 - 230 V	110 - 230 V contactless	110 - 230 V contactless	110 - 230 V contactless	-	-	110 - 230 V contactless
<b>Locating Electrical/metal lines</b>	-	-	-	-	-	-	Zero-potential	200 - 250 V Mains voltage	12 - 250 V Zero-potential Mains voltage
<b>Verifying Function/continuity test</b>	-	-	Continuity / Phase	Continuity	Continuity	Continuity	Continuity	-	-
<b>Identifying Voltages</b>	-	6, 12, 24, 50, 120, 230, 400 V	12, 24, 36, 50, 120, 230, 400, 690 V	-	-	-	-	-	12, 50, 120, 230, 400 V
<b>Quantifying Units</b>	-	-	-	V, A, Ω	V, A, Ω, F, %, Hz	V, A, Ω	-	-	-
<b>Overvoltage categories CAT</b>	CAT II 1000V	CAT III 600V	CAT III 1000V CAT IV 600V	CAT III 1000V	CAT III 1000V CAT IV 600V	CAT III 600V	-	CAT II 300V	CAT III 300V

Electrical variable	Description	Unit	Alternating = current AC / Direct current = DC
U	Voltage	V (volt)	AC / DC
I	Current	A (ampere)	AC / DC
R	Resistance	Ω (ohm)	DC
C	Capacitance	F (farad)	DC
f	Frequency	Hz (hertz)	AC
V	Duty factor	% (percent)	AC

- Detecting**  
Detecting electrical alternating fields / potential

---

- Locating**  
Locating line routing with transmitter and receiver

---

- Verifying**  
Function and continuity test

---

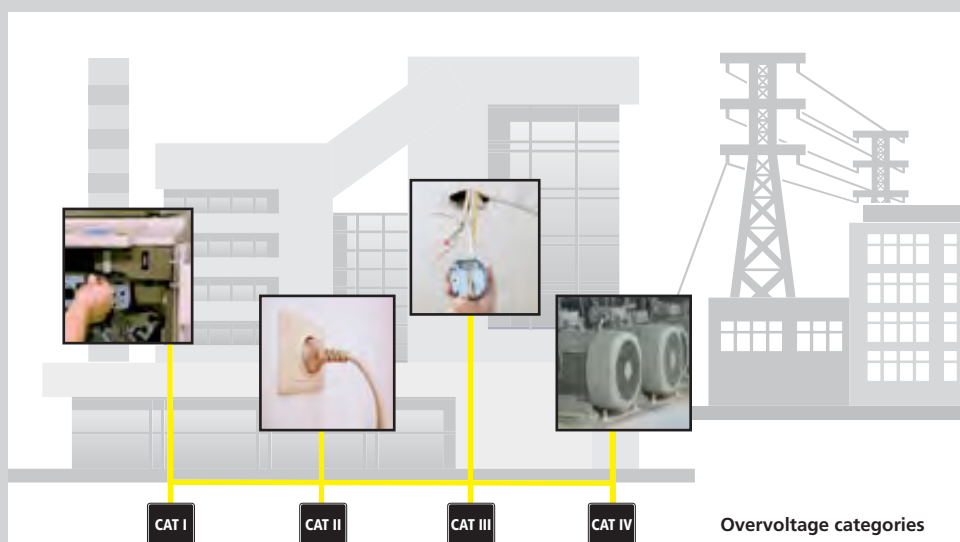
- Identifying**  
Identifying voltages

---

- Quantifying**  
Determining electrical variables

---

- Overvoltage categorie**  
Safety classification of working voltage and voltage peaks



## Voltage tester

### AC-tiveFinder

NEW



**Contactless handy voltage tester –  
Work safely on electrical lines**

- Contactless detection of live lines from 24 to 1000 V/AC
- Locates electrical voltages in cables, sockets, bulb sockets and fuses
- Finds breaks in wires and cables
- Extremely high sensitivity for tracing lines at great depths (Zoom)
- Clearly visible LED for signalling electrical voltages
- Super-bright, integrated flashlight with separate ON/OFF button
- Rugged, impact-resistant quality enclosure

**Voltage ranges:**

V/AC 24 ...1000, Frequency 50 ... 60 Hz

**Inclusive:** AC-tiveFinder, batteries

ORDER NO.	EAN-CODE	PU
083.010A	4 021563 671144	5

PT



### AC-tiveTester

NEW



**Universal voltage tester for the entire  
electrical system of buildings**

- Reliable and fast voltage tester with the most commonly used nominal voltages
- Automatic AC voltage and DC voltage test
- Automatic range and function changeover for direct testing and measurement
- Operates without batteries
- Rugged, practical enclosure in space-saving mini format

**Voltage ranges:**

6, 12, 24, 50, 120, 230, 400 V/AC  
+/-6, 12, 24, 50, 120, 230, 400 V/DC

**LED indicator:**

6, 12, 24, 50, 120, 230, 400 V Polarity plus/minus

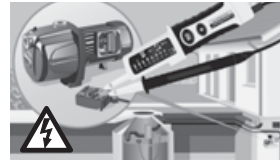
ORDER NO.	EAN-CODE	PU
083.020A	4 021563 671151	5

PT



### AC-tiveMaster

NEW



**Reliable measuring device for testing voltage  
and continuity**

- Voltage tester with the most commonly used nominal voltages
- Automatic AC voltage and DC voltage test
- Automatic range and function changeover for direct testing and measurement
- Single-phase and rotary field test with phase sequence display
- Single-pole phase testing
- Automatic continuity tester with acoustic signal
- Safety self-test (AC warning) as from 50 V, operates in emergency mode without battery
- Rugged, practical enclosure with lockable test prod spacing (for standard EU connector)

**Voltage ranges:** 12, 24, 36, 50, 120, 230, 400, 690 V AC/DC  
**Peak current:** 1s < 0,2 A / 1s (5s) < 3,5 mA

**Inclusive:** AC-tiveMaster, batteries

ORDER NO.	EAN-CODE	PU
083.021A	4 021563 671168	5

PT





## Multimeter, clip-on ammeter

### MultiMeter-Pocket

NEW



**Fully protected universal multimeter – for measurements in all building installations**

- Precise voltage, current and resistance measurement
- Automatic continuity tester
- Diode test function for determining integrity and polarity
- Integrated contactless voltage indicator
- Single-pole phase testing
- Fully protected design in all measuring ranges prevents operating errors
- Super-bright integrated flashlight for illuminating test point
- Large, easy-to-read LC display



**Voltage ranges:**

V/AC: 0...600 V ±1,2%, V/DC: 0...600 V ± 0,5%

**Current range:**

A/AC: 0...200 mA ± 2,5%, A/DC: 0...200 mA ± 2,0%

**Resistance range:**

0...20 Mohm ± 0,8%

**Inclusive:** MultiMeter-Pocket, batteries

ORDER NO.	EAN-CODE	PU
083.032A	4 021563 671229	5



PT

### MultiMeter-Compact

NEW



**Professional multimeter with all functions for exact electrical measurement**

- Precise voltage, current, resistance, capacitance, frequency and duty factor measurement
- Automatic range changeover and manual range preselection
- Automatic continuity tester
- Diode test function for determining integrity and polarity
- Integrated contactless voltage indicator with acoustic, visual and vibration warning
- High measurement resolution for precisely determining different measurement variables
- Compact, impact-resistant enclosure with base support and selector switch
- Large, easy-to-read LC display



**Voltage ranges:** V/DC: 0...600 V, ± 0,5%, V/AC: 0...600 V, ± 1,2%

**Current range:** A/DC: 0...10A, ± 2,5%, A/AC: 0...10A, ± 3,0%

**Resistance range:** 0...20 Mohm ± 0,8%

**Capacitance range:** 0...100 µF, ± 3,0%

**Frequency range:** 0...10MHz, ± 1,5%

**Duty factor range:** 0,1...99,9 %, ± 1,2%

**Inclusive:** MultiMeter-Compact, 2 test prods, batteries

ORDER NO.	EAN-CODE	PU
083.034A	4 021563 671236	5



PT

### MultiClamp-Meter Pro

NEW



**Professional current and voltage clamp meter with true r.m.s. measurement**

- Measurement in all closed current circuits (AC/DC)
- Automatic continuity tester with acoustic signal
- Automatic diode measurement
- Peak-HOLD function for determining short-term making current
- High measurement resolution for precisely determining current, voltage and resistance
- Integrated contactless voltage indicator to quickly determine live parts
- MIN/MAX function for determining changing measurement variables
- Bright LED lighting for integrated test point illumination
- Backlit LC display with bar graph display



**Max. input power:** A AC / V DC: 200A (PEAK 282,8A), V AC/DC: 600 V AC/DC

**Resistance, continuity test:** 600 V AC/DC

**Current range:** A/AC 0...200 A, ± 2,5%, A/DC: 0...200 A, ± 2,0%

**Voltage ranges:**

V/AC 0,2...600 V, ± 1,5% V/DC: 0,2...600 V, ± 1,0%

**Frequency range:** 50/60Hz AC

**Inclusive:** MultiClamp-Meter Pro, 2 test leads, batteries

ORDER NO.	EAN-CODE	PU
083.040A	4 021563 671205	5



PT

## Cable detectors

The LAN CableChecker is suitable for analysing multimedia cable installations such as RV, radio, SAT and telephone wiring or LAN computer networks.



Comprehensive accessories set for testing the most commonly used types of plug-in connections



Adjustable test signal volume



Assignment of individual conductors in LAN network cables

### LAN CableChecker

NEW



#### Cable tracer set with transmitter and receiver for LAN, SAT, TV, telephone, audio cables

- Tests wire allocations and analyses line routing
- Checks LAN- network cable assemblies (assigns the individual conductors).
- Analyses LAN, SAT, TV, telephone, audio and other cables in electrical systems
- Integrated continuity tester
- The receiver traces cables up to a depth of 5 cm – contactless.
- Comprehensive accessories set for testing the most commonly used types of plug-in connections
- Universal testing terminals for the connection to any conductor.
- Additional headphones to precisely distinguish between the test signals
- Integrated LED flashlight.



#### Receiver LAN CableChecker RECV

Measuring Range Scan-Modus: 0...5 cm measuring depth

**Inclusive:** Transmitter LAN CableChecker TX, receiver RECV, adapter (RJ11, RJ45, BNC, TV-coax, F-adapter) testing terminals, headphones, batteries, carrying case

ORDER NO.	EAN-CODE	PU
083.060A	4 021563 671779	5

PT

2x 9V

HARD

### AC-Tracer

NEW



#### Cable tracer set with transmitter and receiver

- Non-contact tracing of the transmission signal by the receiver
- Fast tracing of coherent electrical circuits.
- Location of lines in coherent, live electrical circuits
- Detection of fuse circuits in live installations
- Receiver with audible signal tone for locating measured objects
- Receiver with adjustable sensitivity for optimum fine adjustment
- Socket adapter for direct and fast testing in building installations.
- E27 lamp adapter for direct and fast testing in lamp circuits.



#### Receiver AC-Tracer RECV

Measuring range: 0...5 cm measuring depth

**Inclusive:** Transmitter AC-Tracer TX, receiver RECV, EURO connector, UK-plug (Great Britain), E27 Lamp adapter, battery, carrying case

ORDER NO.	EAN-CODE	PU
083.050A	4 021563 672103	5

PT

CAT II 300V

9V

HARD



# Cable detectors

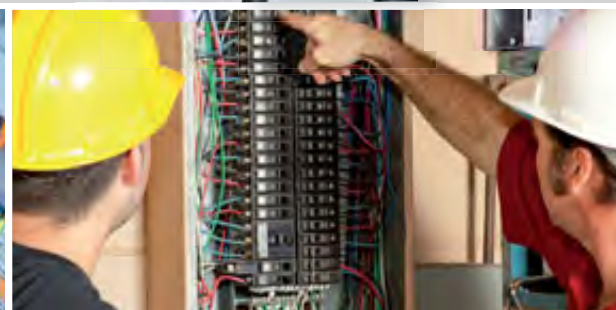
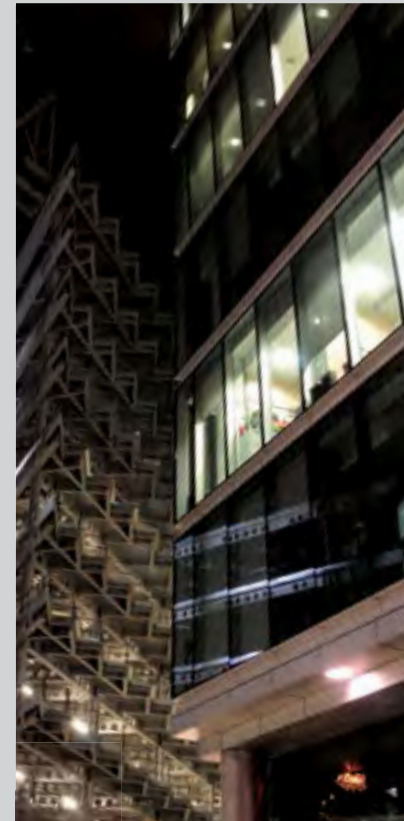
Transmitter/receiver line testers – Measurement with transmitter and receiver. The sender feeds coded signals into the cable to be checked. The signal is a modulated current that creates an electromagnetic field about the conductor. The receiver recognises this field, decodes it and is then able to find and locate cables with this signal. Ideal for taking stock of electrical installations and metal line systems.

For more detailed information, go to [www.laserliner.com](http://www.laserliner.com)!



Inaccessible cables: Line detection up to measuring depth of 1 m – e.g. suspended ceilings or underground cables

Easy location of fuses in switch boxes



## CableTracer Pro

NEW



### Universal, flexible cable tracer set including transmitter and receiver

- Non-contact tracing of the transmission signal by the receiver.
- Locates electrical cables, fuses, circuit breakers, metal pipes (such as heating pipes) and much more.
- Locates interrupted cables in existing installations and short-circuits in existing installation cables.
- May be used with or without mains voltage.
- High frequency of 125 kHz
- Display of DC and AC voltages.
- Signal coding allows as many as 7 senders to be used with one receiver and is thus ideal for complex installation settings.
- Integrated AC voltage detector
- Permanent AC voltage warnings
- Integrated illumination of measuring points
- Clearly arranged, illuminated displays

**Inclusive:** Transmitter CableTracer TX, receiver RECV, connecting cable, test prods, test clamps, batteries, carrying case

ORDER NO.	EAN-CODE	PU
083.070A	4 021563 671212	2

**CableTracer TX**  
**Inclusive:** Transmitter CableTracer TX, connecting cable, test prods, test clamps, battery

083.070.1	4 021563 677153	1
-----------	-----------------	---



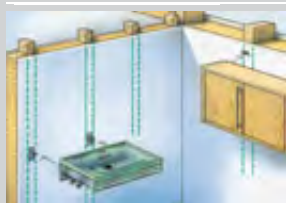
# Electronic Scanners





## Metal, beam and line finding devices

Drilling and screwing jobs have always involved a level of risk. The electronic scanners now keep you clearly informed of what is hidden below the surface of walls, floors and ceilings. They therefore give you the assurance of being able to complete your project quickly, precisely and without unexpected complications.



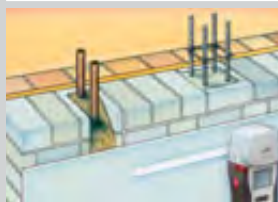
**1**  
**StudScan**  
Beam / cavity detection



**4**  
**Depth measurement**  
Determining depth



**2**  
**MetalScan**  
Targeted metal detection



**5**  
**Metal definition**  
Ferro- / Nonferro Scan



**3**  
**AC-Scan**  
Targeted wire detection



### StarFinder

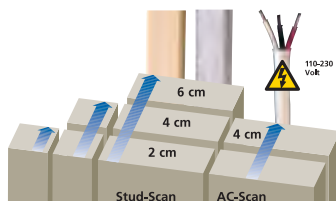


**AUTO**  
CALIBRATION

#### Electronic device for detecting uprights and beams in indoor walls

- In dry building work, enables you to reliably find stable fixing points, e.g. for wash basins, kitchen cupboards, shelves, heavy mirrors.
- The separate AC mode enables live wires to be specifically searched for and localised.
- High safety is guaranteed by the permanent voltagewarning function.

**Inclusive:** StarFinder, battery



ORDER NO.	EAN-CODE	PU
080.970A	4 021563 660797	10

**PT**

**1 3**

Metal, beam and line finding devices



TwinFinder

NEW



AUTO CALIBRATION

- Electronic detector for metal and live wires**
- This device permits targeted scanning for metals such as reinforcing iron, heating pipes and water pipes.
  - Locating areas between metal uprights that are free from sub-structures, e.g. for making breakthroughs (kitchen hatches, skylights).
  - Voltage warning: more safety when drilling! The AV voltage alarm warns continuously of live, unshielded wires.

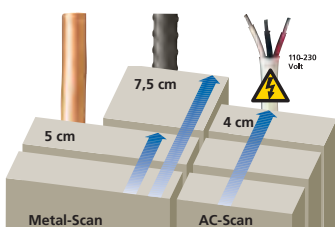
Inclusive: TwinFinder, battery

ORDER NO. EAN-CODE PU

080.975A 4 021563 671755 5

PT

2 3 9V



MetalliFinder



- Universal scanning and detection device with depth display**
- Enables targeted search for metals such as reinforcing steel, heating pipes and water pipes.
  - Also localises and warns of live wires
  - The depth measurement function is a valuable aid in deciding whether there is sufficient drilling depth over metal girders, etc.
  - Therefore no more accidental drilling into metal water or gas pipes
  - Prevents drilling into girders or steel reinforcements when working in walls and masonry
  - Pays for itself by avoiding expensive repair work and ugly holes drilled in the wrong place

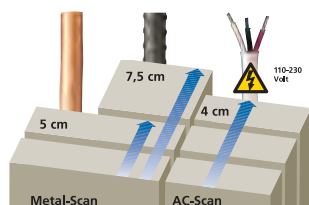
Inclusive: MetalliFinder, battery

ORDER NO. EAN-CODE PU

080.950A 4 021563 660490 5

PT

2 3 4 5 9V





Metal, beam and line finding devices



MetalliFinder Pro



Universal metal finder with depth display for localising electrically live conductors

- Enables targeted search for metals such as reinforcing steel, heating pipes and water pipes.
- Also localises and warns of live wires
- The depth measurement function is a valuable aid in deciding whether there is sufficient drilling depth over metal girders, etc.
- Therefore no more accidental drilling into metal water or gas pipes
- Prevents drilling into girders or steel reinforcements when working in walls and masonry
- Pays for itself by avoiding expensive repair work and ugly holes drilled in the wrong place
- Large, illuminated display

Inclusive: MetalliFinder Pro, battery

ORDER NO.	EAN-CODE	PU
080.951A	4 021563 670291	5

PT



MultiFinder Pro



One for all: Several integrated sensors make the MultiFinder Pro a scanning and detection tool for many different applications

- It is able to detect wood, iron, copper and live wires.
- The user guide on the LC display makes the MultiFinder easy and reliable to use.
- Handling is additionally facilitated by acoustic and optical detection signals.
- High functioning safety is guaranteed through special warning signals.
- Special feature: In metal mode, the MultiFinder Pro is even able to detect concealed lines when they are not live.
- Illuminated display

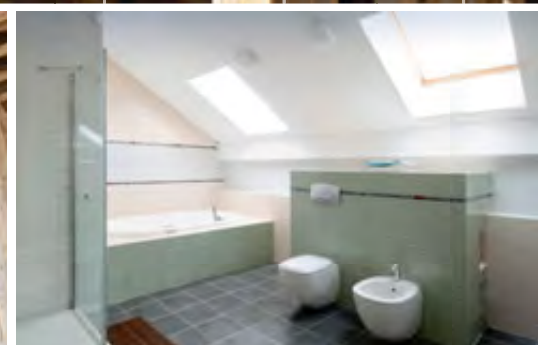
Inclusive: Multifinder Pro, battery

ORDER NO.	EAN-CODE	PU
080.960A	4 021563 660506	5

PT

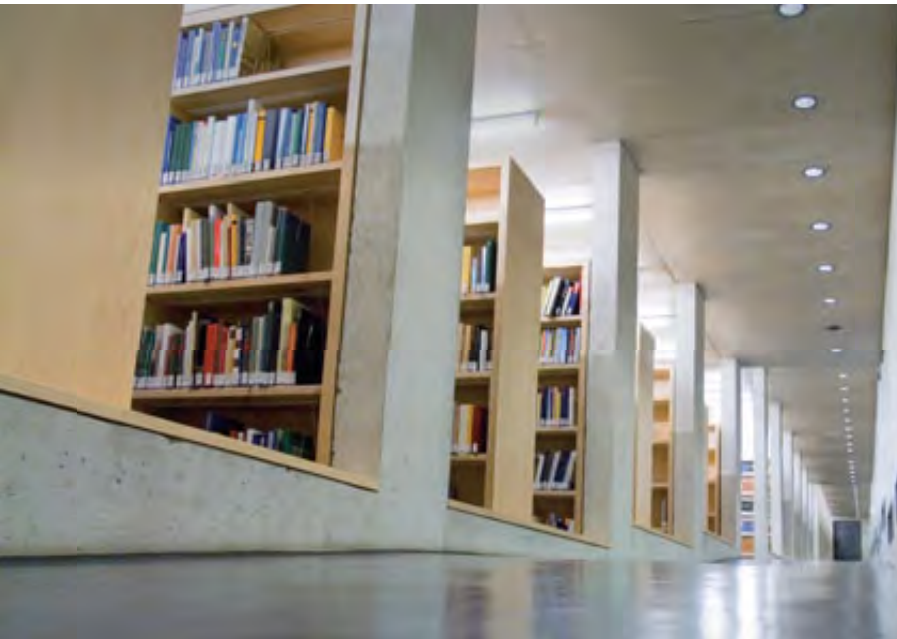


# Slope indicators





# Digital spirit levels



## DigiLevel



### Digital electronic spirit level with vertical and horizontal angle display

- An acoustic signal is sounded at 0°, 45°, 90°, 135° and 180° as an aid to ease the alignment of objects.
- Angles can be transmitted in reference mode.
- Powerful adhesion magnets and additional vertical and horizontal vial, illuminated display
- Accuracy of electronic measurements: ± 0.1° at 0° and 90°, ± 0.2° from 1° ... 89°, vial precision ± 0.5 mm / m
- Slope in degree, IN/FT or percent

**Inclusive:** DigiLevel, softbag, batteries

### DigiLevel Compact





Length 23 cm

ORDER NO.	EAN-CODE	PU
081.202A	4 021563 663019	5

### DigiLevel 60

Milled measuring surface 60 cm in length, call-up of up to 9 values with the separate measurement memory

081.200A	4 021563 662302	5
----------	-----------------	---

PT

## DigiLevel Laser



### Digital electronic spirit level with wallline-laser, vertical and horizontal angledisplay

- An acoustic signal is sounded at 0°, 45°, 90°, 135° and 180° as an aid to ease the alignment of objects.
- Angles can be transmitted in reference mode.
- Recall of up to 9 values with the separate measurement memory
- Milled measuring surface 60 cm in length, powerful adhesion magnets and additional vertical and horizontal vial, illuminated display
- Accuracy of electronic measurements: ± 0.1° at 0° and 90°, ± 0.2° from 1° ... 89°, vial precision ± 0.5 mm / m
- Slope in degree, IN/FT or percent

**Inclusive:** DigiLevel Laser, softbag, batteries

ORDER NO.	EAN-CODE	PU
081.201A	4 021563 663156	5







PT

## Digital spirit levels and angle gauges

### DigiLevel Pro



**Digital electronic level with spot laser as an optical extension for point-precise assessment of height and angle**

- An acoustic signal is sounded at 0°, 45°, 90°, 135° and 180° as an aid to ease the alignment of objects.
- The flip-display feature changes the display automatically when making overhead measurements
- Calibration function for increased accuracy and adaptation to the measuring surface
- Powerful adhesion magnets on the underside
- Accuracy of electronic measurements:  $\pm 0.05^\circ$  at 0° ... 1°,  $\pm 0.1^\circ$  and 90°,  $\pm 0.2^\circ$  from 1° ... 89°, vial precision  $\pm 0.5$  mm / m

**Inclusive:** DigiLevel Pro, softbag, batteries



#### DigiLevel Pro

ORDER NO.	EAN-CODE	PU
<b>30 cm:</b> 081.212A	4 021563 664856	5
<b>60 cm:</b> 081.210A	4 021563 664825	5
<b>120 cm:</b> 081.216A	4 021563 664849	2



### ArcoMaster



**Digital electronic angle measuring device with display**

- Measuring range 0° - 220°
- Pull-out bevel
- With additional horizontal and vertical vial
- An illuminated LCD display on each side (front and rear)
- Hold function
- Automatic calculation of angle bisection
- Accuracy of electronic angle measurement  $\pm 0.1^\circ$ , vial precision  $\pm 0.25$  mm / m

**Inclusive:** ArcoMaster, softbag, batteries



LC display on the front and rear side



**Bevel – can be pulled out downward or upward**

ORDER NO.	EAN-CODE	PU
<b>40 cm:</b> 075.130A	4 021563 664016	5
<b>60 cm:</b> 075.131A	4 021563 666683	5





Planning tools



ArcoStar 30 cm <sup>(1)</sup>



**Professional stainless steel try square with degree markings and double scale**  
 – Abrasion-proof because of recessed markings  
 – Optimum precision through guide tongue  
 – Length of leg 30 cm



ORDER NO.	EAN-CODE	PU
072.10-30	4 021563 652693	12

**PT**

TorpedoStar SRL Mag.

**With SRL mirror-reflex vial, horizontal, vertical and 45° vial**  
 – Adhesion magnet on the base  
 – Supplied in packs of 12 pcs. in display box  
 – In assorted colours



ORDER NO.	EAN-CODE	PU
070.912	4 011879 642938	12

**PT**



TorpedoStar Compact Spirit Level

**With horizontal, vertical and 45° vial**  
 – Adhesion magnet on the base  
 – Supplied in packs of 24 pcs. in display box  
 – In assorted colours



ORDER NO.	EAN-CODE	PU
070.910	4 011879 636180	24

**PT**



WingStar Post Spirit Level

**Wing and post spirit level with 3 vials**  
 – Adhesion magnets on the base  
 – Elastic band for attaching to wooden posts or plastic pipes  
 – Supplied in packs of 6 pcs. in display box  
 – In assorted colours

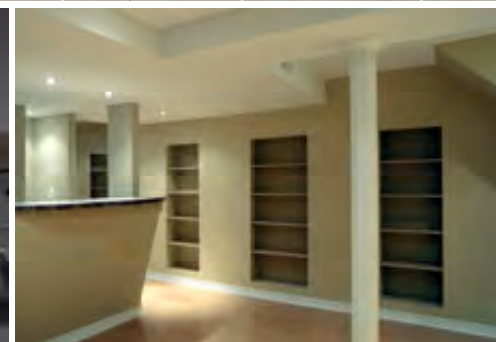


ORDER NO.	EAN-CODE	PU
070.900	4 011879 635992	6

**PT**



# Distance measurer





Building and construction



MeterMaster Pro Laser



Professional ultrasonic distance measuring tool

- Laser for sighting – ultrasound for measuring
- Ultrasound measurement of lengths, surfaces and space volumes, automatic addition and multiplication
- The measurement can be exactly sighted by exactly matching the laser circle and ultrasound measuring range.
- With versatile calculation and memory functions
- Self-triggering facility and reference mode
- Easy handling through dedicated function buttons and multiple line display
- Measuring range: 0.6 to 18 m

Inclusive: MeterMaster Pro Laser, battery

ORDER NO.	EAN-CODE	PU
080.930A	4 021563 660483	5

PT



LaserRange-Master Pocket



Compact laser distance measurer featuring numerous functions

- Measuring range, internal 0.3 to 40 m
- Strong sunlight will reduce the maximum range.
- Constant high measuring precision of  $\pm 2$  mm
- Features distance, surface and volume calculation, Pythagoras 1+2, min./max. and plus/minus function
- Continuous measurement
- Illuminated 4-line LCD
- 1/4" threaded connection
- With fold-out pin for measuring from inside corners.

Inclusive: LaserRange-Master Pocket, softbag, batteries

ORDER NO.	EAN-CODE	PU
080.942A	4 021563 666690	5

PT



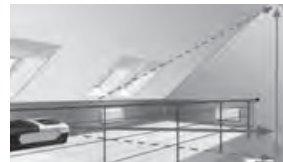
SOFT

Building and construction



**LaserRange-Master Pocket Pro + FlexPod**

**NEW**



**Set consisting of LaserRange-Master Pocket Pro and FlexPod stand**

- Product description same as LaserRange-Master Pocket but with extended interior measuring range from 0.3 to 60 m
- Steplessly adjustable mini stand with ball joint and clamping screw
- With Velcro fastener for securing to extruded sections and roof laths – ideal for measuring over long distances

**Available in April 2011.**



Folding test prods for easy use in difficult places With Velcro fastener for securing to a wide range of objects

**Inclusive:** LaserRange-Master Pocket Pro, softbag, FlexPod, batteries

ORDER NO.	EAN-CODE	PU
080.943A	4 021563 677160	5





Building and construction



RollPilot S12

NEW



Measuring wheel for use on straight lines and curves

- This mechanical metering wheel delivers accurate measured values at all ranges up to 9.999,9 m.
- Large, easy to read display with additional fine scale (1 - 9 cm) for precise measurement
- Addition when wheels are turning forwards,
- The moving pointer shows the exact start and end positions.
- Folding design and softbag for easy transport.
- Well positioned brake and zero setting directly on handle.
- Non-wearing cardanic scale drive
- Accuracy ± 10 cm / 100 m
- Metering wheel with 1 m circumference



Foldable for easy transport

Inclusive: RollPilot S12, softbag

ORDER NO.	EAN-CODE	PU
075.005A	4 021563 672714	1

PT

RollPilot Pro



Road distance measuring wheel with fold-down stand and wheel pointer

- Approved by PTB (German Federal Institute for Physical Technology) and capable of calibration
- Measures in curves, uneven terrain and straight lines
- Balanced weight distribution through cardan shaft, oil-resistant tyre
- 6-digit mechanical counter
- Clear, easily readable figures of 7 mm height
- Addition forwards, subtraction backwards
- Zero reset lever
- Measures up to 9,999.9 m



ORDER NO.	EAN-CODE	PU
075.004	4 011879 635381	1

IQ

# Point, line and cross-line lasers





# ROOM DESIGN AND INTERIOR FURNISHINGS

Precise instrumentation for bare structure finishing and interior decoration. Use the right tools to make professional, quick alignments, even over longer distances. Demanding do-it-yourself enthusiasts and building professionals alike will find right instruments in our selection – for renovating, remodelling, on the building site, or anywhere precision is called for!

## Powerful technology



**AUTOMATIC LEVEL**

Automatic alignment of the device with a magnetically dampened pendulum system. The devices are set to their initial position and align themselves automatically in a matter of seconds.



**magnetic**

For many measuring tools, the key to optimum working is magnetic adhesion. This leaves the hands free to complete other tasks.



**lock**

Transport LOCK: Units with "Automatic Level" are protected with a pendulum lock during transport.



1/4" 5/8"

Tripod connection for optimal alignment of the instrument.



**PowerBright LASER** **PowerBright+ LASER**

Devices with PowerBright technology have special high-performance diodes to produce super bright laser lines. These remain visible over longer distances, in bright ambient light and on dark surfaces.



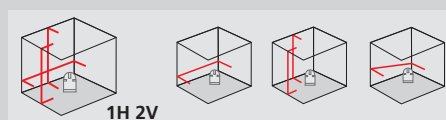
SOFT HARD

Laserliner instruments are available in sturdy carrying bags or hard-shell cases. SOFT: softbag HARD: plastic carry case



**RX-READY**

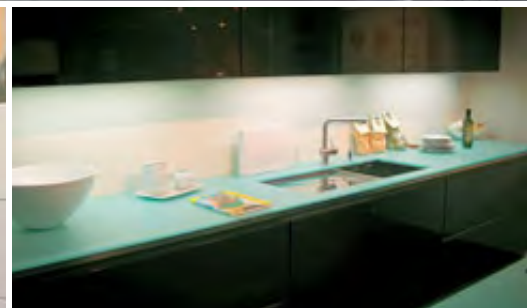
RX-READY technology enables line lasers to be used even in unfavourable light conditions. The laser lines pulsate at a high frequency and this can be picked up by special laser receivers over long distances.



The space grids show the number and direction of laser lines.  
**H** = Number of horizontal lasers  
**V** = Number of vertical lasers  
**S** = Slope function

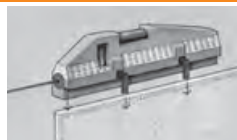


Room design and interior furnishings



**HandyLaser Compact**

Combines the advantages of a universal laser spirit level with **outstandingly compact dimensions**  
 – Vial accuracy 0.5 mm / 1 m



**Inclusive:** HandyLaserCompact, adjustable feet, batteries

ORDER NO.	EAN-CODE	PU
025.03.00A	4 021563 657841	8

**PT**



**CompactBase**

For tripod applications with HandyLaser Compact  
 – 5/8" thread  
 – 360° rotation with adjustable angle scale  
 – Fast alignment to the millimetre thanks to adjusting screw



For HandyLaser Compact only.



ORDER NO.	EAN-CODE	PU
025.78A	4 021563 661343	5

**PT**



**90° Pentaprism Mag.**

For vertical levelling and for right angles  
 – Deflects the laser beam by precisely 90°  
 – Can be rotated through 360°  
 – With magnetic coupling



For HandyLaser Compact.



ORDER NO.	EAN-CODE	PU
025.70A	4 011879 641023	5

**PT**





## Room design and interior furnishings

### SuperLine 2D



**Line laser for aligning work on all surfaces**

- Accuracy 1 mm / 1 m
- The rotatable angle scale means that the device and the graduated collar can be set separately to any angle.
- Powerful adhesion magnets facilitate attachment to magnetic surfaces
- Illuminated vial

**Optional:** Fastening also possible with ConTacts adhesive strips.



**Inclusive:** SuperLine 2D, batteries

ORDER NO.	EAN-CODE	PU
081.110A	4 021563 662579	5

**PT**



### ConTacts (1)



**Super contact strips**

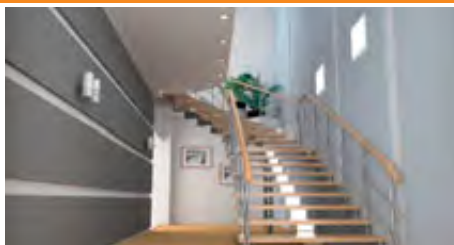
- For a secure fixing on all surfaces
- Can be removed without a trace, many options for use



ORDER NO.	EAN-CODE	PU
081.101A	4 021563 662883	20

**PT**

### SuperLine 3D

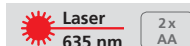


**Line laser for aligning work on all surfaces**

- Extremely bright laser
- Accuracy 0.8 mm / 1 m
- Round-the-corner alignment in one work step thanks to 3D fine adjustment
- 3 vials and special line lens
- The line laser can be secured on all surfaces with the enclosed adhesive strips and fixing pins
- The MicroControl button allows rapid and exact fine alignment of the laser.
- The rotatable housing and degree scale enable setting to any angle.



**Inclusive:** SuperLine 3D, ConTacts, pins, batteries



ORDER NO.	EAN-CODE	PU
081.100A	4 021563 661398	5

**PT**

### SuperSquare-Laser



**90° laser lines make this the ideal measuring tool for all floor-based alignment work**

- Angle accuracy 0.05°, accuracy of vertical laser lines 0.5 mm / 1 m
- The wide-range laser beams also project easily visible laser lines onto walls.
- The two vials facilitate vertical levelling on walls.
- The 90° try-square edge makes it easy to align the first floor tile.
- Built-in levelling feet
- Illuminated vial
- 1/4"-tripod connection



**Inclusive:** SuperSquare-Laser, laser enhancement glasses, carrying case, batteries



ORDER NO.	EAN-CODE	PU
081.130A	4 021563 662760	5

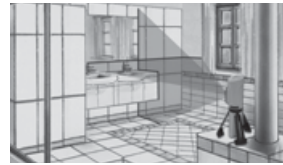
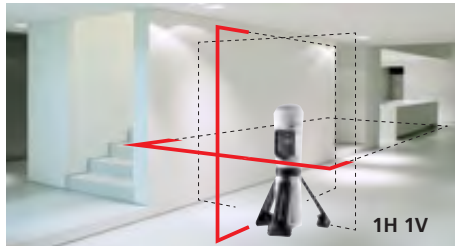
**PT**

**HARD**

Room design and interior furnishings

SuperCross-Laser Compact

NEW



**Pocket-size automatic cross-line laser**  
 - 4° self-levelling range, accuracy 5 mm / 10 m  
 - Additional slope mode to align angled surfaces.  
 - Folding supporting feet ensure a stable position during alignment work but are conveniently tucked away for carrying.

**Inclusive:** SuperCross-Laser Compact, softbag, battery

ORDER NO.	EAN-CODE	PU
081.124A	4 021563 670857	5

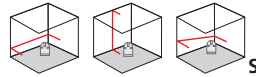
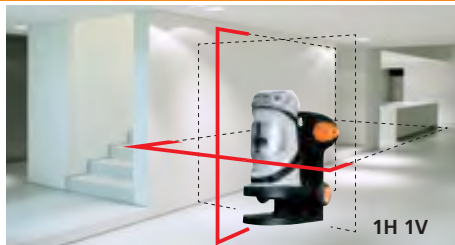
PT



Laser 635 nm
 **AUTOMATIC LEVEL**
 lock
 1x AA



SuperCross-Laser 2



**Laser for interior finishing work featuring 2 laser lines**  
 - 4.5° self-levelling range, accuracy 5 mm / 10 m  
 - Tilt mode is an additional feature that permits gradients to be laid out.  
 - The device's height-adjustable bracket means that it can be mounted on a tripod or attached directly to the wall.

**Inclusive:** SuperCross-Laser 2, height-adjustable bracket, softbag, batteries

ORDER NO.	EAN-CODE	PU
081.120A	4 021563 662708	5

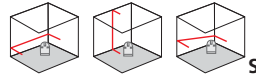
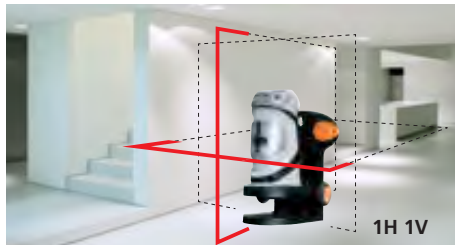
PT



Laser 635 nm
 **AUTOMATIC LEVEL**
 lock
 magnetic
 1/4" 5/8"
 4x AA



SuperCross-Laser set 330 cm



As SuperCross-Laser 2 but with additional 330 cm telescopic stand

**UNLIMITED MOVE**

**Inclusive:** SuperCross-Laser 2, height-adjustable bracket, softbag, batteries, 330 cm telescopic stand incl. softbag

ORDER NO.	EAN-CODE	PU
081.121A	4 021563 663996	4

PT

Laser 635 nm
 **AUTOMATIC LEVEL**
 lock
 magnetic
 1/4" 5/8"
 4x AA



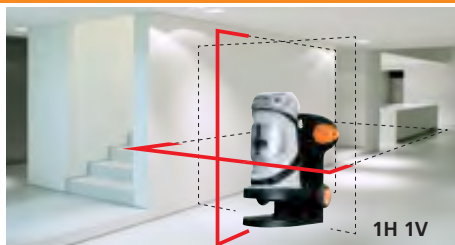


Room design and interior furnishings



SuperCross-Laser Combo Pack

NEW



**Automatic cross-line laser with screwdriver**  
 – SuperCross laser 2: Product description as on Page 44

- Screwdriver**
- With Lithium-Ion-Technology
  - Integrated working place LED
  - Rotation indicator
  - Right-, left-handed rotation
  - 4V Lithium-Ion-Battery

**Inclusive:** SuperCross-Laser 2, height-adjustable bracket, carrying case, batteries, screwdriver, magnetic bit holder, 9 bits, charger



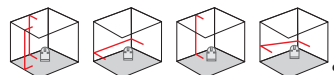
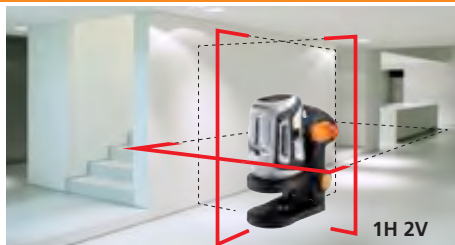
ORDER NO.	EAN-CODE	PU
081.123A	4 021563 670673	5

PT

**Laser** 635 nm   
 **AUTOMATIC LEVEL**   
 lock   
 magnetic   
 1/4"   
 5/8"   
 4x AA

HARD

SuperCross-Laser 3



- The cross-line laser with additional reference line**
- With 3 laser lines: front cross-line laser and 90° laser on the side
  - 5° self-levelling range, accuracy 5 mm / 10 m
  - Tilt mode is an additional feature that permits gradients to be laid out.
  - The device's height-adjustable bracket means that it can be mounted on a tripod or attached directly to the wall.

**Inclusive:** SuperCross-Laser 3, height-adjustable bracket, softbag, batteries

ORDER NO.	EAN-CODE	PU
081.140A	4 021563 668441	5

PT

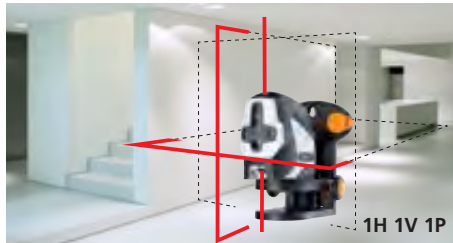
**Laser** 635 nm   
 **AUTOMATIC LEVEL**   
 lock   
 magnetic   
 1/4"   
 5/8"   
 4x AA

SOFT

Room design and interior furnishings

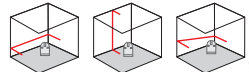


**SuperCross-Laser 2P**  
NEW



**Laser for interior finishing work featuring 2 laser lines**

- 4° self-levelling range, accuracy 5 mm / 10 m
- Additional plumb laser at top and bottom
- Tilt mode is an additional feature that permits gradients to be laid out.
- The device's height-adjustable bracket means that it can be mounted on a tripod or attached directly to the wall.
- RX-Ready: The laser receiver, which is available as an optional extra, can detect laser lines in a range of up to 30 m - ideal for outdoor applications.



**Inclusive:** SuperCross-Laser 2P, height-adjustable bracket, softbag, batteries

ORDER NO.	EAN-CODE	PU
081.125A	4 021563 670864	5

**optional: Laser receiver RX 30 Mag.**  
RangeXtender, including battery and universal mount

033.25A	4 021563 672394	5
---------	-----------------	---

PT



SOFT

**AutoPoint-Laser 5**  
NEW



**Automatic 5-point laser for levelling and plumbing**

- 3° self-levelling range, accuracy 2 mm / 10 m
- All 5 lasers are set at right angles to each other. This makes practically all alignment tasks possible.
- Additionally, the housing can be turned to enable horizontal levelling, while the two perpendicular lasers allow markings to be easily transferred from the floor to the ceiling.
- Powerful magnets in the base



**Inclusive:** AutoPoint-Laser 5, laser enhancement glasses, magnetic base, softbag, batteries

ORDER NO.	EAN-CODE	PU
060.021A	4 021563 676514	1

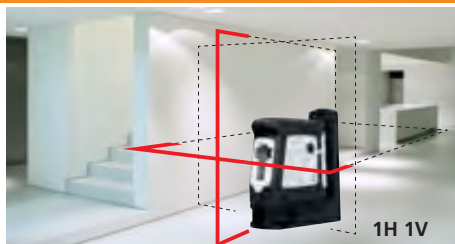
PT

SOFT



Room design and interior furnishings

AutoCross-Laser 2 <sup>(1)</sup>



**Cross-line laser with 2 clearly visible laser lines**  
 – 3-6° self-levelling range, accuracy 3 mm / 10 m  
 – The unit's magnetic base makes it very versatile - it can be mounted on a tripod, on the wall or attached to magnetic objects.  
 – RX-Ready: The laser receiver, which is available as an optional extra, can detect laser lines in a range of up to 30 m - ideal for outdoor applications.

**Inclusive:** AutoCross-Laser 2, laser enhancement glasses, magnetic base, carrying case, batteries

ORDER NO.	EAN-CODE	PU
031.00.01A	4 021563 656363	1

PT



Laser 635 nm
 **AUTOMATIC LEVEL**
 lock
 **RX READY**
 magnetic
 1/4"
 5/8"
 3x AA

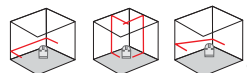
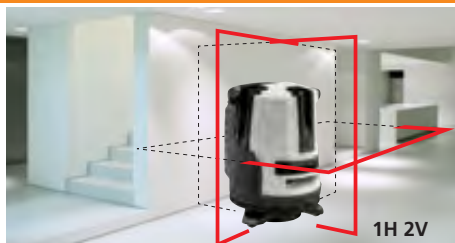


**optional: Laser receiver RX 30 Mag.**  
 RangeXtender, including battery and universal mount

033.25A	4 021563 672394	5
---------	-----------------	---

HARD

AutoCross-Laser 3 <sup>(1)</sup>



**The cross-line laser with additional reference line**  
 – 4.5° self-levelling range, accuracy 2 mm / 10 m  
 – Tilt mode is an additional feature that permits gradients to be laid out.  
 – Additional plumb function with adjusting plate and laser cross at the top.  
 – Straightforward positioning of vertical laser lines thanks to rotatable device base.

**Inclusive:** AutoCross-Laser 3, laser enhancement glasses, base, adjustment plate, softbag, batteries

ORDER NO.	EAN-CODE	PU
030.090A	4 021563 664795	1

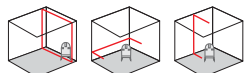
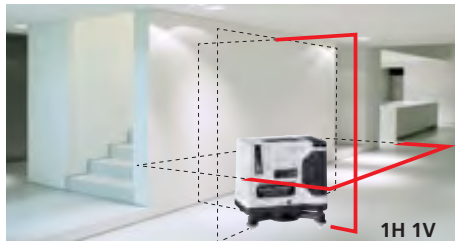
PT



Laser 635 nm
 **AUTOMATIC LEVEL**
 lock
 **RX READY**
 1/4"
 5/8"
 3x AA

SOFT

CompactPalm-Laser PowerBright Plus



**Compact cross-line laser with 2 extreme bright laser lines**  
 – This unit produces 2 very visible laser lines which make it outstanding for the alignment of tiles, wall studding, windows, doors, etc.  
 – 1.5° self-levelling range, accuracy 2 mm / 10 m  
 – The pivoted housing can be turned to permit exact positioning of laser lines.  
 – RX-Ready: The laser receiver, which is available as an optional extra, can detect laser lines in a range of up to 30 m - ideal for outdoor applications.

**Inclusive:** CompactPalm-Laser, laser enhancement glasses, tripod adapter, marking angle, softbag, batteries

ORDER NO.	EAN-CODE	PU
010.001A	4 021563 670710	1

PT

**optional: Laser receiver RX 30 Mag.**  
 RangeXtender, including battery and universal mount

033.25A	4 021563 672394	5
---------	-----------------	---



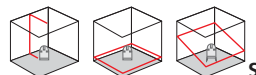
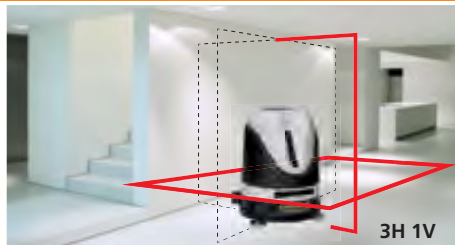
Laser 635 nm
 **PowerBright+ LASER**
**AUTOMATIC LEVEL**
 lock
 **RX READY**
 5/8"
 3x AA

SOFT

Room design and interior furnishings



**AutoCross-Laser 360° set**



**UNLIMITED MOVE**



**Super bright cross-line laser with telescoping tripod**  
 – Model like AutoCross-Laser 360° PowerBright, but includes softbag, 330 cm telescoping stand and magnetic target plate

**Inclusive:** AutoCross-Laser 360° PowerBright, softbag, 330 cm telescoping stand incl. softbag, magnetic target plate, batteries

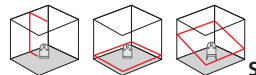
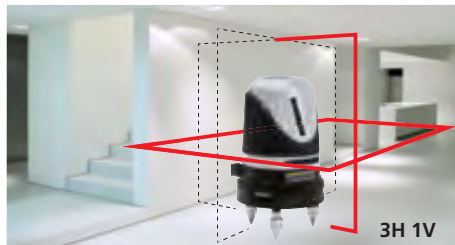
ORDER NO.	EAN-CODE	PU
049.013A	4 021563 670611	1

**PT**



**SOFT**

**AutoCross-Laser 360° PowerBright**



**Super-bright cross-line laser with horizontal 360° laser line**  
 – 2.5° self-levelling range, accuracy 2 mm / 10 m  
 – The housing with removable device base and low lying laser diodes is ideal when working close to ground level.  
 – Tilt mode is an additional feature that permits gradients to be laid out.  
 – RX-Ready: The laser receiver, which is available as an optional extra, can detect laser lines in a range of up to 30 m - ideal for outdoor applications.

**Inclusive:** AutoCross-Laser 360° PowerBright, laser enhancement glasses, base, tripod adapter (for crank tripods), softbag, batteries

ORDER NO.	EAN-CODE	PU
049.014A	4 021563 678204	1

**PT**

**optional: Laser receiver RX 30 Mag.**  
 RangeXtender, including battery and universal mount

033.25A	4 021563 672394	5
---------	-----------------	---



**SOFT**



## Room design and interior furnishings

### ACL 360° telescopic adapter

NEW



**Adapter for telescopic stand 330 cm**  
 – For retrofitting and multiple use of cross-line lasers on telescopic stand.

Only for ACL 360°.



ORDER NO.	EAN-CODE	PU
049.013.1	4 021563 672202	2

PT

### ACL 360° device base

NEW



**Rotary device base**  
 – Easy positioning of vertical laser line

Only for ACL 360°.

ORDER NO.	EAN-CODE	PU
049.013.2	4 021563 678198	2

PT



### RangeXtender 30 Mag

NEW



**Laser receiver for all line lasers with RX-READY technology**  
 – With RX-READY, the laser lines pulsate at a high frequency.  
 – This pulsation allows the range extender to detect laser lines up to a maximum of 30 m away.  
 – The universal mount enables the device to be attached to levelling staffs.  
 – Integrated head magnet



**Inclusive:** universal mount, battery

ORDER NO.	EAN-CODE	PU
033.25A	4 021563 672394	5

PT



### Wall Mount

NEW



**Multi-functional, magnetic wall bracket**  
 – Height-adjustable  
 – 1/4" and 5/8" tripod threads  
 – Special pins and magnets for various surfaces

For SCL 2, SCL 3, SCL 2P, SuperCross-Laser Compact only possible together with Rotobase

ORDER NO.	EAN-CODE	PU
081.120.1	4 021563 668977	1

PT



### Rotobase for SCL series

NEW



**Two stand adapters – used in combination or individually**  
 – 360° rotation for easy positioning  
 – Can be combined with wall bracket  
 – Combination for use with SCL Compact

Available in April 2011.

ORDER NO.	EAN-CODE	PU
081.120.10A	4 021563 677825	5



### SpeedPowerPack



**Quick charging device with high performance batteries**  
 – 4 x type AA  
 – 2700 mAh (Ni-MH)

ORDER NO.	EAN-CODE	PU
039.901A	4 021563 665174	1

PT



# Professional cross-line laser





# INTERIOR FINISHING AND BUILDING

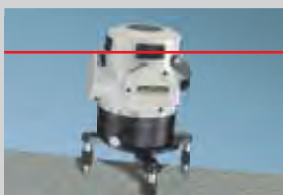
The ideal laser measuring device for interior and dry finish work. Simple handling – these devices align themselves automatically. Clearly visible laser lines for easy alignment of tiles, framing, windows etc. The line lasers with laser receiver can even be used outdoors. The best visibility is offered by green line lasers.

## Powerful technology



**AUTOMATIC LEVEL**

Automatic alignment of the device with a magnetically dampened pendulum system. The devices are set to their initial position and align themselves automatically in a matter of seconds.



**SENSOR AUTOMATIC**

Electronic vials and positioning motors controlled by temperaturestable sensors for automatic alignment of devices. The devices are set to their initial position and align themselves automatically.



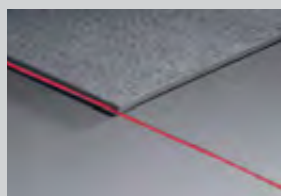
**lock**

Transport LOCK: Units with "Automatic Level" are protected with a pendulum lock during transport. A special motor lock protects units with "Sensor Automatic".



**ANTI SHAKE**

Additional function for all units with „Sensor Automatic“: The electronic permanently levels the units even if these are moving. For quick levelling, on vibrating surfaces and windy weather.



**PowerBright LASER**

Devices with PowerBright technology have special high-performance diodes to produce super bright laser lines. These remain visible over longer distances, in bright ambient light and on dark surfaces.



**Laser 532 nm**

Green looks 12 times brighter than red. This makes possible applications on dark surfaces, over long distances and working even in very bright ambient light conditions. A red laser with a wavelength of 635 nm is used as reference for the difference in brightness.



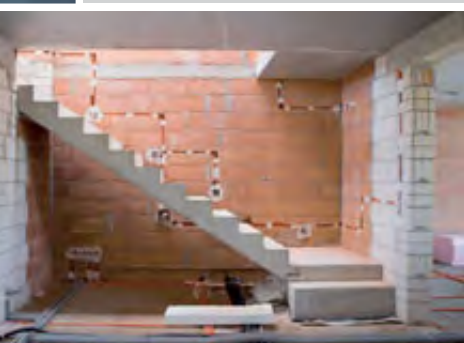
**RX READY**

RX-READY technology enables line lasers to be used even in unfavourable light conditions. The laser lines pulsate at a high frequency and this can be picked up by special laser receivers over long distances.

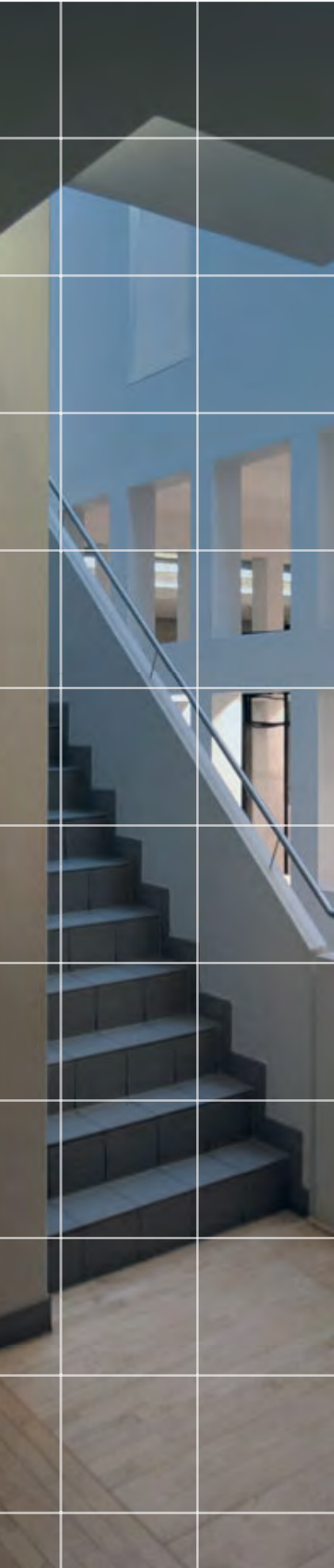


**IP 54**

Protection against dust and water – The measuring tools are characterised by specific protection against dust and rain.



Interior finishing and building



Laser receiver for crossline laser with RX technology: With the laser receiver the laser lines can be seen in any light. With RX-Ready-Technology the laser lines pulsate at a high frequency. This pulsation allows the range extender to detect laser lines up to 50 m away. Universal mount for fixation on the levelling staff. Flexi levelling staffs are recommended for all ground level measurements.



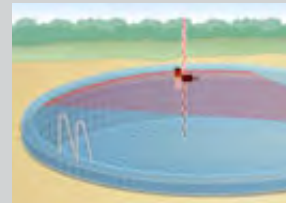
Good readable LED display also from the back and side



Horizontal alignment



Vertical alignment



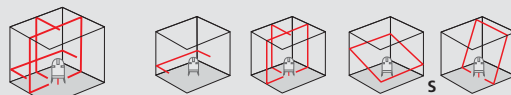
Simple and fast alignment of the Height differences



max. 50 m



RangeXtender 52 TwinLevel



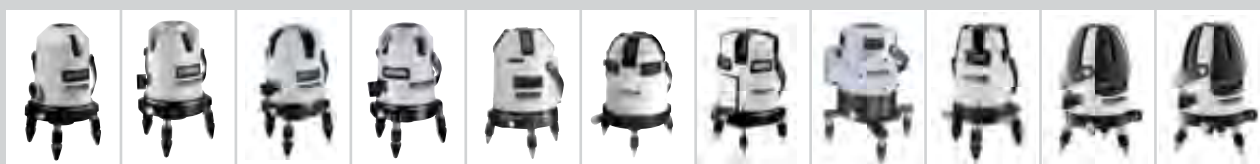
1H 3V 1D

The space grids show the number and direction of laser lines.  
**H** = Number of horizontal lasers  
**D** = Downward plumb laser (downpoint)  
**V** = Number of vertical lasers  
**S** = Slope function



Interior finishing and building

Overview



	ACL 2C	ACL 3C	ACL 4C	ACL 7C	PCL 5 R	PCL 6	PCL 8	PCL 10	ECL 8	GLL 3P	GLL 5P
--	--------	--------	--------	--------	---------	-------	-------	--------	-------	--------	--------

<b>System</b>	1H / 1V	1H / 2V	1H / 3V	3H / 4V	1H / 4V	2H / 4V	4H / 4V	4H / 3V+3V	4H / 4V	1H / 2V	1H / 4V
<b>Brightness</b>	PowerBright	PowerBright	PowerBright	PowerBright	standard	standard	standard	standard	PowerBright	green	green
<b>Accuracy mm/10 m</b>	2	2	2	2	1	1	1	1	1	2	2
<b>Number of laser lines</b>	2	3	4	7	5	6	8	10	8	3	5
<b>Plumb laser</b>	●	●	●	●	●	●	●	●	●	●	●
<b>Levelling range</b>	2.5°	2.5°	2.5°	2.5°	3°	4°	4°	2°	2.5°	2°	2°
<b>Levelling principle</b>	Automatic-Level	Automatic-Level	Automatic-Level	Automatic-Level	Sensor-Automatic	Sensor-Automatic	Sensor-Automatic	Sensor-Automatic	Sensor-Automatic	Automatic-Level	Automatic-Level
<b>Vertically adjustable rotary base</b>	●	●	●	●	●	●	●	●	●	●	●
<b>Vertical fine adjustment</b>	●	●	●	●	●	●	●	●	●	●	●
<b>AntiShake</b>	-	-	-	-	●	●	●	●	●	-	-
<b>Slope mode</b>	-	-	-	-	-	-	-	-	electronic	-	-
<b>Near-wall vertical laser</b>	-	-	-	-	-	-	-	●	-	-	-
<b>Receiver mode</b>	●	●	●	●	●	●	●	●	●	●	●

**ACL** = AutoCross-Laser 360°, AutoCross-Laser 2C, AutoCross-Laser 3C, AutoCross-Laser 4C, AutoCross-Laser 7C  
**PCL** = Precision-Cross-Laser 5 R, Precision-Cross-Laser 6, Precision-Cross-Laser 8, Precision-Cross-Laser 10  
**ECL** = Evolution-Cross-Laser 8  
**GLL** = Greenline-Laser 3P, Greenline-Laser 5P

● = available

Cross line laser for professional use

Laserliner instruments are available in sturdy carrying cases.



In practical carrying case with reinforced aluminium corners: always ready for use



**Inclusive:** EvolutionCross-Laser 8P PowerBright, RangeXtender, universal mount, rechargeable batteries, quick charger, tripod adapter (for crank tripods), rubber caps, carrying case, battery



**Laser enhancement glasses for sets without RangeXtender laser receiver**  
 ACL 2C, ACL 3C, ACL 4C, ACL 7C  
 but with laser enhancement glasses



**SpeedPowerPack –**  
 1 hour charging time with high-quality external quick-charger

Interior finishing and building

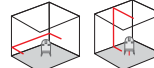


**AutoCross-Laser 2C PowerBright**



**The cross-line laser with additional plumb laser at the bottom of the unit**

- 2.5° self-levelling range, accuracy 2 mm / 10 m
- Wide-range vertical laser line
- The pivoted housing can be turned with a vernier adjustment mechanism to permit exact positioning of laser lines.
- Adjustable feet with removable rubber caps prevent the device slipping on smooth surfaces.
- RX-Ready: The laser receiver, which is available as an optional extra, can detect laser lines in a range of up to 50 m - ideal for outdoor applications.



**Inclusive:** AutoCross-Laser 2C PowerBright, rechargeable batteries, quick charger, laser enhancement glasses, tripod adapter (for crank tripods), rubber caps, carrying case

ORDER NO.	EAN-CODE	PU
031.201A	4 021563 668458	1

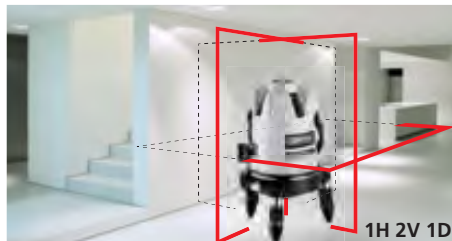
031.200A	4 021563 663095	1
----------	-----------------	---

**AutoCross-Laser 2C PowerBright RX**  
as above without laser enhancement glasses but with RangeXtender, including battery and universal mount

031.200A	4 021563 663095	1
----------	-----------------	---

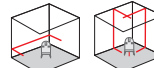


**AutoCross-Laser 3C PowerBright**



**Cross-line laser with plumb laser additional reference line**

- Straightforward plumb function using laser cross at the top and additional plumb laser.
- The vertical laser lines are aligned at right angles to one another.
- 2.5° self-levelling range, accuracy 2 mm / 10 m
- The pivoted housing can be turned with a vernier adjustment mechanism to permit exact positioning of laser lines.
- Adjustable feet with removable rubber caps
- RX-Ready: The laser receiver, which is available as an optional extra, can detect laser lines in a range of up to 50 m - ideal for outdoor applications.



**Inclusive:** AutoCross-Laser 3C PowerBright, rechargeable batteries, quick charger, laser enhancement glasses, tripod adapter (for crank tripods), rubber caps, carrying case

ORDER NO.	EAN-CODE	PU
031.212A	4 021563 668465	1

031.211A	4 021563 667062	1
----------	-----------------	---

**AutoCross-Laser 3C PowerBright RX**  
as above without laser enhancement glasses but with RangeXtender, including battery and universal mount

031.211A	4 021563 667062	1
----------	-----------------	---

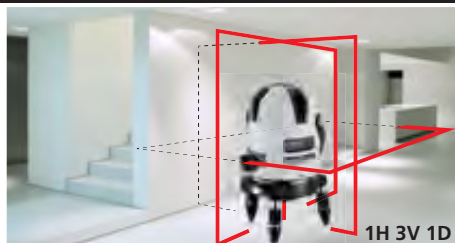




Interior finishing and building



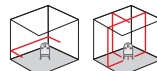
**AutoCross-Laser 4C PowerBright**



**Robust cross-line laser with 4 super-bright laser lines, plumb laser and impact-proof housing cover**

- Straightforward plumb function using laser cross at the top and additional plumb laser.
- The vertical laser lines are aligned at right angles to one another.
- 2.5° self-levelling range, accuracy 2 mm / 10 m
- The pivoted housing can be turned with a vernier adjustment mechanism to permit exact positioning of laser lines.
- Adjustable feet with removable rubber caps
- RX-Ready: The laser receiver, which is available as an optional extra, can detect laser lines in a range of up to 50 m - ideal for outdoor applications.

**Optional: Systainer® version, Page 83**



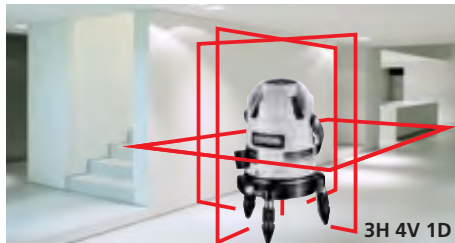
**Inclusive:** AutoCross-Laser 4C PowerBright, rechargeable batteries, quick charger, laser enhancement glasses, tripod adapter (for crank tripods), rubber caps, carrying case

ORDER NO.	EAN-CODE	PU
031.312A	4 021563 668403	1

**AutoCross-Laser 4C PowerBright RX**  
as above without laser enhancement glasses but with RangeXtender, including battery and universal mount

031.311A	4 021563 667079	1
----------	-----------------	---

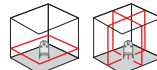
**AutoCross-Laser 7C PowerBright**



**Cross-line laser with 7 super-bright laser lines and plumb laser**

- The 3 horizontal laser diodes project a homogeneous 360° laser line, the 4 vertical laser lines are aligned at right angles to one another.
- Straightforward plumb function using laser cross at the top and additional plumb laser.
- 2.5° self-levelling range, accuracy 2 mm / 10 m
- The pivoted housing can be turned with a vernier adjustment mechanism to permit exact positioning of laser lines.
- Adjustable feet with removable rubber caps
- RX-Ready: The laser receiver, which is available as an optional extra, can detect laser lines in a range of up to 50 m - ideal for outdoor applications.

**Optional: Systainer® version, Page 83**

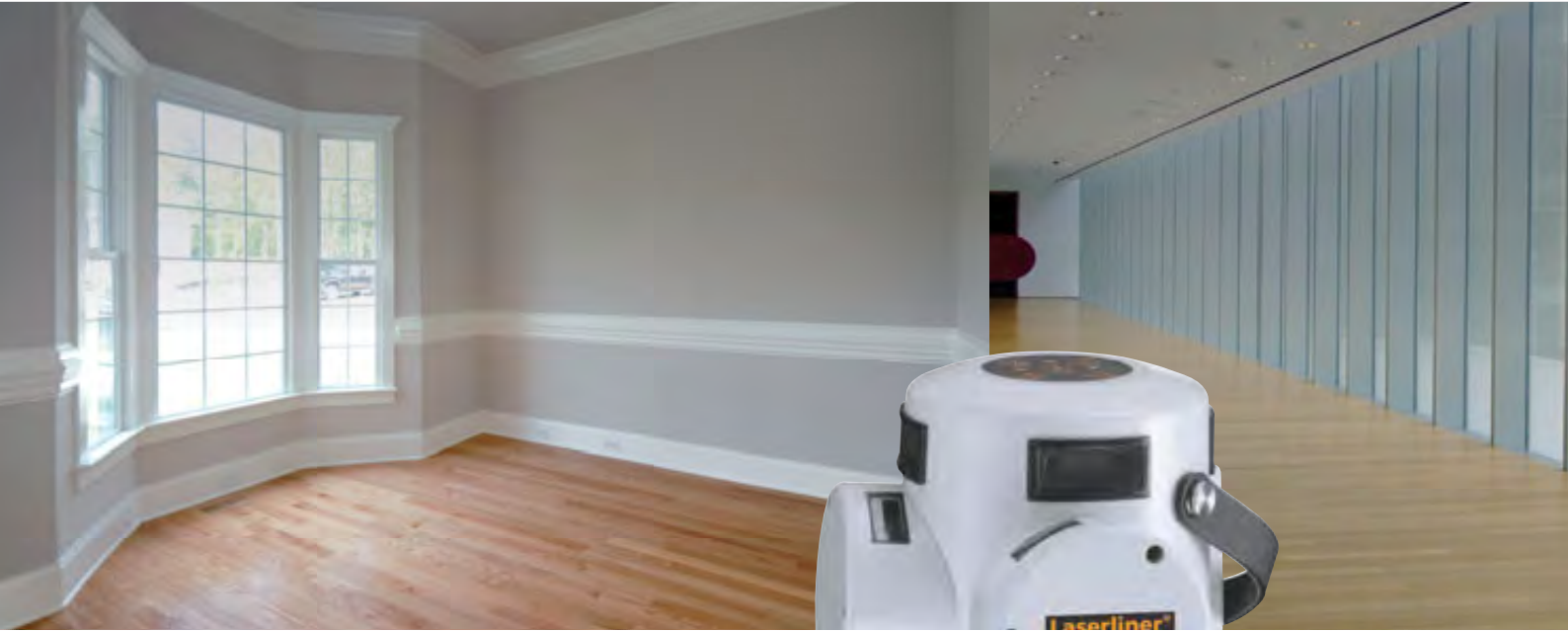


**Inclusive:** AutoCross-Laser 7C PowerBright, rechargeable batteries, quick charger, laser enhancement glasses, tripod adapter (for crank tripods), rubber caps, carrying case

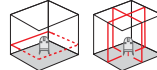
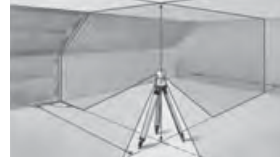
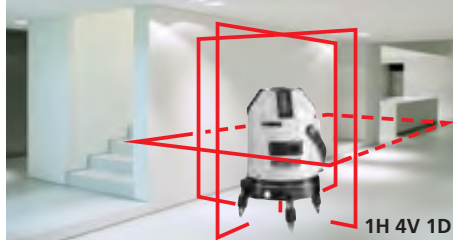
ORDER NO.	EAN-CODE	PU
049.210A	4 021563 670888	1

**AutoCross-Laser 7C PowerBright RX**  
as above without laser enhancement glasses but with RangeXtender, including battery and universal mount

049.211A	4 021563 669073	1
----------	-----------------	---



**PrecisionCross-Laser 5P RXR <sup>(1)</sup>**



- High-precision cross-line laser with 5 line lasers**
- The 4 vertical laser lines are aligned at right angles to one another. Ideal for virtually any alignment job.
  - Straightforward plumb function using laser cross at the top and additional plumb laser.
  - 3° self-levelling range, accuracy 1 mm / 10 m
  - Remote control for motorised rotation of the base. This makes rotating the laser lines easy; they can then be positioned exactly with the vernier adjustment mechanism.
  - RangeXtender laser receiver – maximum range up to 50 m radius

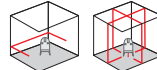
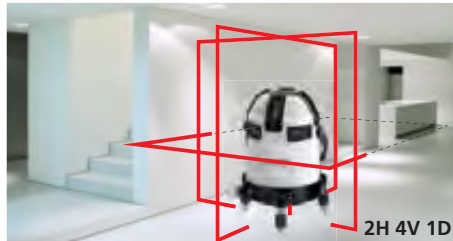
**Optional: Systainer® version, Page 83**

**Inclusive:** PrecisionCross-Laser 5P, RangeXtender, universal mount, remote control, rechargeable batteries, quick charger, tripod adapter (for crank tripods), carrying case, batteries

ORDER NO.	EAN-CODE	PU
039.00.00A	4 021563 661329	1



**PrecisionCross-Laser 6P RX <sup>(1)</sup>**



- High-precision cross-line laser with 6 line lasers and plumb laser**
- The 2 horizontal laser lines produce a 200° laser line, the 4 vertical laser lines are aligned at right angles to one another. Ideal for virtually any alignment job.
  - Straightforward plumb function using laser cross at the top and additional plumb laser.
  - 4° self-levelling range, accuracy 1 mm / 10 m
  - The pivoted housing can be turned with a vernier adjustment mechanism to permit exact positioning of laser lines.
  - RangeXtender laser receiver – maximum range up to 50 m radius

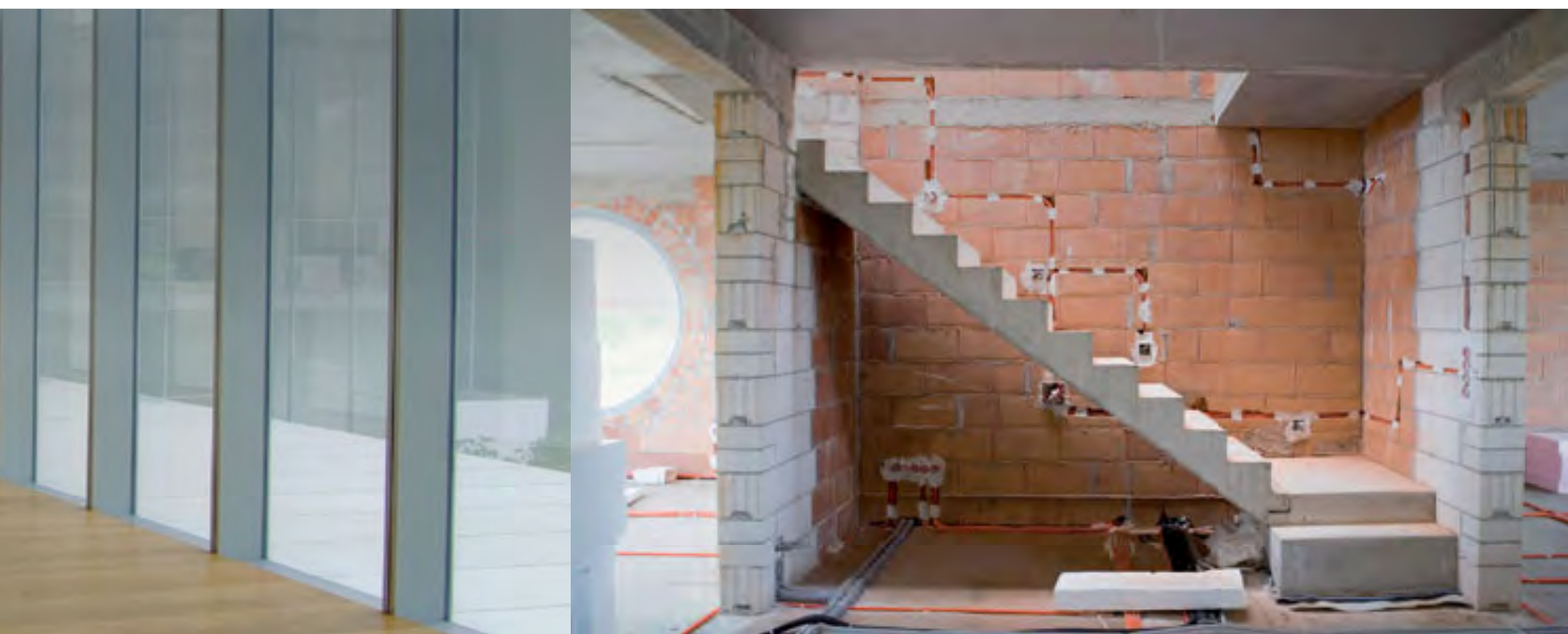
**Inclusive:** PrecisionCross-Laser 6P, RangeXtender, universal mount, rechargeable batteries, quick charger, tripod adapter (for crank tripods), carrying case, battery

ORDER NO.	EAN-CODE	PU
039.100A	4 021563 663682	1





Interior finishing and building



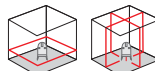
**PrecisionCross-Laser 8P RX (1)**



4H 4V 1D

**High-precision cross-line laser with 8 line lasers and plumb laser**

- The 4 horizontal laser diodes project a homogeneous 360° laser line, the 4 vertical laser lines are aligned at right angles to one another. Ideal for virtually any alignment job.
- Straightforward plumb function using laser cross at the top and additional plumb laser.
- 4° self-levelling range, accuracy 1 mm / 10 m
- The pivoted housing can be turned with a vernier adjustment mechanism to permit exact positioning of laser lines.
- RangeXtender laser receiver – maximum range up to 50 m radius

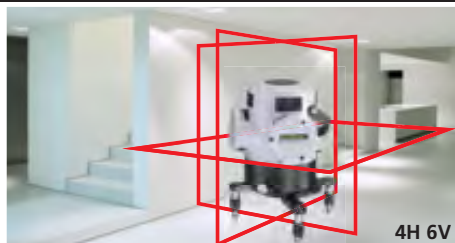


**Inclusive:** PrecisionCross-Laser 8P, RangeXtender, universal mount, rechargeable batteries, quick charger, tripod adapter (for crank tripods), carrying case, battery

ORDER NO.	EAN-CODE	PU
039.200A	4 021563 663033	1



**PrecisionCross-Laser 10 RX**

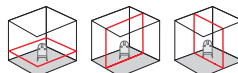


4H 6V

**High-precision cross-line laser with 10 line lasers**

- The 4 horizontal laser diodes project a homogeneous 360° laser line. A total of 6 vertical laser diodes project 2 uniformly bright 360° laser lines. These are aligned at right angles to one another - ideal for all alignment jobs, even floor applications.
- Simple plumb function
- 2° self-levelling range, accuracy 1 mm / 10 m
- The pivoted housing can be turned with a vernier adjustment mechanism and moving base plate to permit exact positioning of laser lines.
- RangeXtender laser receiver – maximum range up to 50 m radius

**Optional: Systainer® version, Page 83**



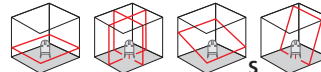
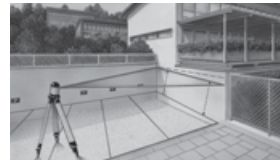
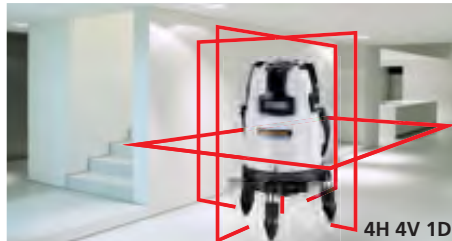
**Inclusive:** PrecisionCross-Laser 10, RangeXtender, universal mount, rechargeable batteries, quick charger, tripod adapter (for crank tripods), carrying case, battery

ORDER NO.	EAN-CODE	PU
039.400A	4 021563 663712	1





**EvolutionCross-Laser  
8P PowerBright RX**



**High-precision cross-line laser with 8 super-bright laser lines and plumb laser**

- The 4 horizontal laser diodes project a homogeneous 360° laser line, the 4 vertical laser lines are aligned at right angles to one another.
- Additional slope function for aligning inclines
- Motorised adjustment up to ± 2.5°
- Straight forward plumb function using laser cross at the top and additional plumb laser.
- 2.5° self-levelling range, accuracy 1 mm / 10 m
- The pivoted housing can be turned with a vernier adjustment mechanism and horizontal circle to permit exact positioning of laser lines.
- RangeXtender laser receiver – maximum range up to 50 m radius

**Inclusive:** EvolutionCross-Laser 8P PowerBright, RangeXtender, universal mount, rechargeable batteries, quick charger, tripod adapter (for crank tripods), rubber caps, carrying case, battery

**Optional:** Systainer® version, Page 83



Stable metal base with vernier adjustment

Freely rotatable horizontal circle



ORDER NO.	EAN-CODE	PU
048.200A	4 021563 668380	1





## Interior finishing and building



### RangeXtender 51



**Laser receiver for all line lasers with RX-READY technology**

- Fast alignment work in close and long range
- With RX-READY, the laser lines pulsate at a high frequency. This pulsation allows the range extender to detect laser lines up to a maximum of 50 m away.
- The universal mount enables the device to be attached to levelling staffs.

**Optional: softbag**

**Not suitable for green lasers.**

**Inclusive:** universal mount, battery

ORDER NO.	EAN-CODE	PU
RX 51	033.20-1 4 021563 662920	1
Softbag	033.21 4 021563 663859	1



### RangeXtender 52 TwinLevel



**Laser receiver for all line lasers with RX-READY technology**

- Two different sensitivity levels in close and long range
- With RX-READY, the laser lines pulsate at a high frequency. This pulsation allows the range extender to detect laser lines up to a maximum of 50 m away.
- The universal mount enables the device to be attached to levelling staffs.

**Optional: softbag**

**Not suitable for green lasers.**

**Inclusive:** universal mount, battery

ORDER NO.	EAN-CODE	PU
RX 52	033.20-2 4 021563 670895	1
Softbag	033.21 4 021563 663859	1



### Magnetic target plate red / green



**For all rotary lasers or laser instruments**

- With adhesion magnets and dual scale
- e.g. for lowering ceilings



ORDER NO.	EAN-CODE	
023.61A	4 011879 643980	red
023.65	4 021563 663439	green



### Laser enhancement glasses red / green



**Optimum visibility of the laser marker from distance**

- Please make sure these are always used in outdoor applications involving green laser instruments.

ORDER NO.	EAN-CODE	
020.70A	4 011879 644000	red
020.71	4 021563 663446	green

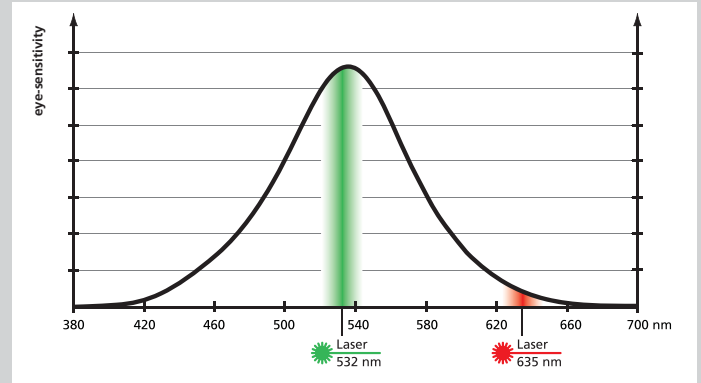


## Interior finishing and building



### Green laser technology

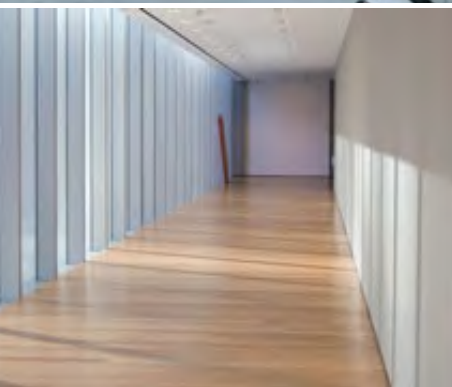
Over what distance a laser is visible to the eye depends on the colour or wavelength of the laser beam. This has to do with the physiology of the human eye – green appears brighter to us than red. Depending on the ambient light conditions, therefore, green lasers are many times more visible than red ones – and indeed indoors, up to 12 times more.



Unlike red lasers, green laser light can only be generated indirectly. This limits working temperature such that green lasers are darker outside a temperature range of 0 – 40° C or 0 – 50 °C. Energy consumption is also greater, this reduces battery operating time.



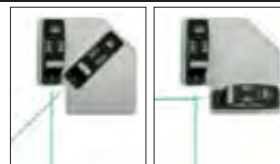
**Laser**  
532 nm



### Greenline-Laser 1 Pro <sup>(1)</sup>



1 Line



**Green line laser for ground applications as well as for horizontal and vertical levelling directly on the wall**

- The laser is fixed to the wall using special pins and precisely aligned through the eccentric adjustment.
- Parallel shifts can be performed through the exact alignment of the laser line to the body edges.
- Accuracy 3 mm / 10 m
- The length and intensity of the laser line can be adjusted.
- Additional magnets on the underside also allow the 1 Pro to be mounted on steel structures.
- Green laser technology with 0 °C ... 40 °C temperature range

**Inclusive:** Greenline-Laser 1 Pro, laser enhancement glasses, rechargeable battery, charger, carrying case

ORDER NO.	EAN-CODE	PU
036.00.00A	4 021563 661428	1
036.10	4 011879 632007	1

**Installation Plate GL 1 Pro <sup>(1)</sup>**

Easy projection of 45° and 90° alignment is made possible by the installation plate.



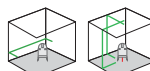


Interior finishing and building



**Greenline-Laser 3P**

NEW



**Cross line laser with 3 extremely bright green laser lines and plumb function**

- 2° self-levelling range, accuracy 2 mm / 10 m
- Straight forward plumb function using laser cross at the top and additional plumb laser.
- Individually switchable laser lines.
- Removable lithium battery pack with charger function.
- GRX-Ready: in combination with the optional laser receiver, the integrated hand-held receiver mode permits detection of laser lines at long distances and under unfavourable light conditions.
- Green laser technology with 0 °C ... 40 °C temperature range

**Inclusive:** Greenline-Laser 3P, laser enhancement glasses, tripod adapter, rubber caps, lithium ion battery, carrying case

ORDER NO.	EAN-CODE	PU
037.200A	4 021563 677177	1

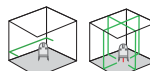


Available in April 2011.



**Greenline-Laser 5P**

NEW



**Cross line laser with 5 extremely bright green laser lines and plumb function**

- 2° self-levelling range, accuracy 2 mm / 10 m
- Straight forward plumb function using laser cross at the top and additional plumb laser.
- Individually switchable laser lines.
- Removable lithium battery pack with charger function.
- GRX-Ready: in combination with the optional laser receiver, the integrated hand-held receiver mode permits detection of laser lines at long distances and under unfavourable light conditions.
- Green laser technology with 0 °C ... 40 °C temperature range

**Inclusive:** Greenline-Laser 5P, laser enhancement glasses, tripod adapter, rubber caps, lithium ion battery, carrying case

ORDER NO.	EAN-CODE	PU
037.210A	4 021563 677184	1

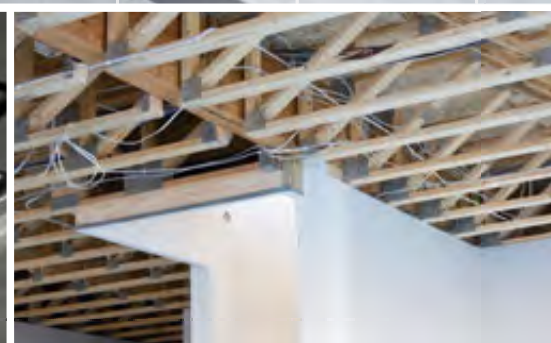
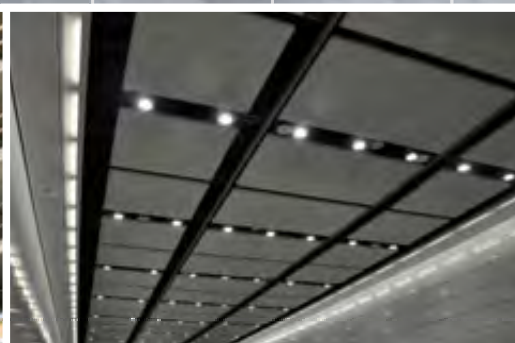


Available in April 2011.





# Universal rotary laser





# INTERIOR FINISHING AND BUILDING CONSTRUCTION

Rotary lasers have become an indispensable tool interior finishing work and building construction. Their primary use is to autonomously radiate 360° beam circles. Laserliner's modern rotary lasers are able to perform many additional diverse tasks. Their reliability and accuracy have proved themselves in practical applications, even in very unusual situations.

## Powerful technology



### AUTOMATIC LEVEL

Automatic alignment of the device with a magnetically dampened pendulum system. The devices are set to their initial position and align themselves automatically in a matter of seconds.



### ANTI SHAKE

Additional function for all units with „Sensor Automatic“: The electronic permanently levels the units even if these are moving. For quick levelling, on vibrating surfaces and windy weather.



### SENSOR AUTOMATIC

Electronic vials and positioning motors controlled by temperaturestable sensors for automatic alignment of devices. The devices are set to their initial position and align themselves automatically.



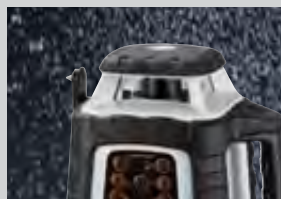
### ADS

*Tilt* Prevents erroneous or inaccurate measurements: Continuous monitoring of the alignment of the laser is activated 30 or 45 seconds after automatic levelling. Measurements will be suspended as a precaution if the device is disturbed unintentionally or moves due to the influence of external factors.



### lock

Transport LOCK: Units with „Automatic Level“ are protected with a pendulum lock during transport. A special motor lock protects units with „Sensor Automatic“.



### IP 54 IP 66

Protection against dust and water – The measuring tools are characterised by specific protection against dust and rain.



### Laser 532 nm

Green looks 12 times brighter than red. This makes possible applications on dark surfaces, over long distances and working even in very bright ambient light conditions. A red laser with a wavelength of 635 nm is used as reference for the difference in brightness.



### Laser 635 nm

Rotary lasers with 635 nm technology have a large temperature range in which they operate reliably. Visibility is limited to indoor area applications.



## Laser receiver technology



Device operation is made easier by infrared remote controls. Furthermore, measurement results are bound to be reliable, since the position of the measuring tools does not change.



**HIGH  
SPEED**

The receiver speeds up response times - rapid detection accelerates work rates.



The SpotLite function – a projected light beam at the height of the laser beam – makes precise marking easy and prevents parallax errors.



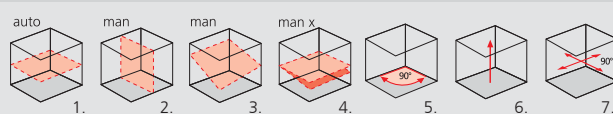
For many measuring tools, the key to optimum working is magnetic adhesion. This leaves the hands free to complete other tasks.



Protection against dust and water – The measuring tools are characterised by specific protection against dust and rain.



Laser reception range	red	green
SensoLite 120	120 m	120 m
SensoLite 310	300 m	200 m



The space grids show the laser planes and functions.

- 1. Horizontal levelling
- 2. Vertical levelling
- 3. Slope function
- 4. Slope function of one axis
- 5. 90° angle
- 6. Plumb function
- 7. 90° reference function

**auto:** Automatic alignment      **man:** Manual alignment



Interior finishing and building construction

Overview



	BeamControl-Master	AquaPro	AQuaMaster	Quadrum	Revolution
Horizontal	manual	auto	auto	auto	auto
Vertical	manual	manual	manual	auto	auto
Accuracy / 10 m	2 mm	2 mm	2 mm	1 mm	0,75 mm
Reference laser beam	●	●	●	●	●
Plumb laser	-	-	-	●	-
Levelling range	-	3.5°	3.5°	5°	4°
Levelling principle	manual	Automatic-Level	Automatic-Level	Sensor-Automatic	Sensor-Automatic
AntiDriftSystem (Tilt)	-	-	-	●	●
Vertical fine adjustment	-	-	-	●	●
AntiShake	-	-	-	-	●
Slope	manual	manual	manual	DualSlope	Single-/DualSlope
Remote control	●	-	●	●	●
Receiver mode	●	●	●	●	●

● = available

Rotary lasers for professional use



Laserliner instruments are available in sturdy carrying bags or hard-shell cases.  
 SOFT: softbag  
 HARD: plastic carry case  
 ALU: case with reinforced aluminium corners



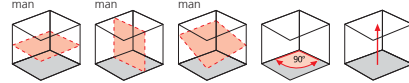
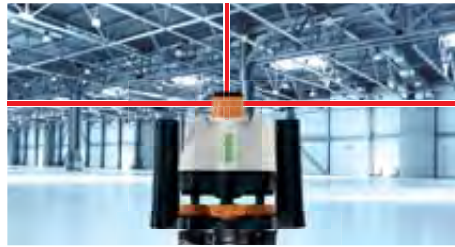
**Inclusive:** Quadrum Green, laser receiver SensoLite 310, universal mount, remote control, charger, rechargeable battery, battery holder, carrying case, batteries



Battery system recharge with original accessories

Interior finishing and building construction

BeamControl-Master 120 set



- Rotary laser with laser receiver**
- Accuracy 2 mm / 10 m
  - A special die-cast-zinc platform guarantees long-term stability
  - Laser modes: spot, scan, rotary and hand receiver mode
  - All functions can be controlled remotely.
  - Laser receiver range up to 120 m radius

**BeamControl-Master 120 set inclusive:** BeamControl-Master, SensoCommander 120, universal mount, aluminium lightweight tripod 165 cm, flexi levelling staff, softbag, batteries

ORDER NO.	EAN-CODE	PU
026.04.00A	4 021563 665181	1

PT



Inclusive



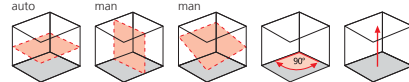
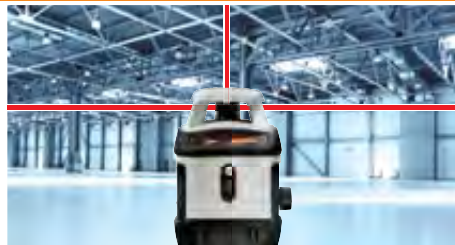
SOFT

**Laser**  
635 nm

5/8"

4x AA

AquaPro 120 set



- Automatic rotary laser with laser receiver, tripod and levelling staff**
- Vertical alignment with adjustable foot
  - 3.5° self-levelling range, accuracy 2 mm / 10 m
  - Laser modes: rotary and hand receiver mode
  - Laser receiver range up to 120 m radius

**Inclusive:** AquaPro, SensoLite 120, universal mount, wall/floor base, aluminium lightweight tripod 165 cm, flexi levelling staff, softbag, batteries

ORDER NO.	EAN-CODE	PU
046.04.00A	4 021563 670598	1

PT



Inclusive



SOFT

**Laser**  
635 nm

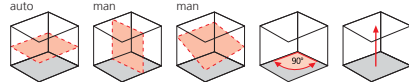
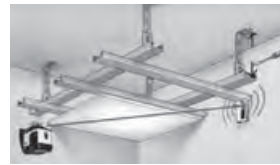
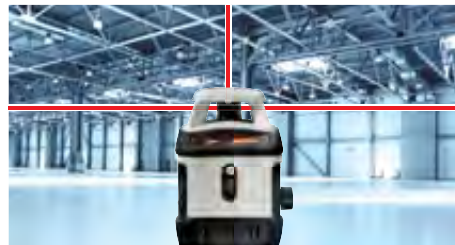
**AUTOMATIC LEVEL** lock

IP 54

5/8"

6x AA

AquaPro 310 S



- Automatic rotary laser with rapid horizontal self-levelling**
- Vertical alignment with adjustable foot
  - 3.5° self-levelling range, accuracy 2 mm / 10 m
  - Laser modes: rotary and hand receiver mode
  - Laser receiver range up to 300 m radius

**Inclusive:** AquaPro, SensoLite 310, universal mount, wall/floor base, rechargeable batteries, charger, carrying case, batteries

ORDER NO.	EAN-CODE	PU
046.02.00A	4 021563 663835	1

IQ

**Laser**  
635 nm

**AUTOMATIC LEVEL** lock

IP 54

5/8"

6x AA

RECHARGE  
7h

HARD

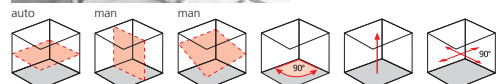
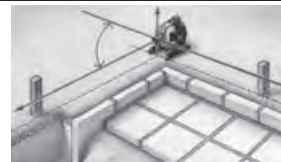




Interior finishing and building construction



AQuaMaster 310 <sup>(1)</sup>



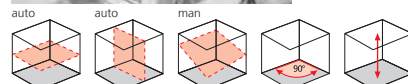
- Automatic rotary laser with rapid horizontal self-levelling**
- Vertical alignment with adjustable foot
  - 3.5° self-levelling range, accuracy 2 mm / 10 m
  - Laser modes: spot, scan, rotary and hand receiver mode
  - Additional 90° reference function for site surveys
  - All functions can be controlled remotely.
  - Laser receiver range up to 300 m radius

**Inclusive:** AQuaMaster, SensoCommander 310, universal mount, wall/floor base, rechargeable battery, battery compartment, charger, carrying case, batteries

ORDER NO.	EAN-CODE	PU
029.02.00A	4 021563 658398	1



Quadrum 310 S



- Fully automatic rotary laser**
- With additional red plumb laser
  - 5° self-levelling range, accuracy 1 mm / 10 m
  - Laser modes: spot, scan, rotary and hand receiver mode
  - All functions can be controlled remotely.
  - Laser receiver range up to 300 m radius

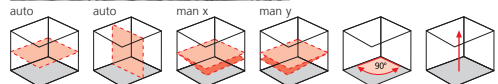
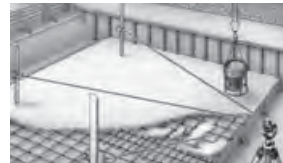
**Inclusive:** Quadrum, SensoLite 310, universal mount, remote control, rechargeable batteries, charger, carrying case, batteries

ORDER NO.	EAN-CODE	PU
053.00.07A	4 021563 670772	1





Revolution 310 S



- Fully automatic rotary laser**
- 4° self-levelling range, accuracy 0,75 mm / 10 m
  - Laser modes: spot, scan, rotary and hand receiver mode
  - Single-slope function for manual tilt of an axis in automatic operation, even if ADS tilt is active.
  - All functions can be controlled remotely using the Commander 50.
  - Laser receiver range up to 300 m radius

**Inclusive:** Revolution, SensoLite 310, universal mount, Commander 50, rechargeable battery, charger, battery holder, carrying case, batteries

ORDER NO.	EAN-CODE	PU
052.00.07A	4 021563 668557	1



SensoLite 120 set



- Laser receiver for rotary lasers**
- Laser reception range 120 m for red and green lasers
  - With head magnet
  - High-luminosity LEDs on front and rear

**Inclusive:** universal mount, battery

ORDER NO.	EAN-CODE	PU
026.50	4 021563 662845	1



SensoLite 310 set



- Laser receiver for rotary lasers**
- One LCD on the front and one on the rear
  - five-digit display, various acoustic melodies support the optical indicators
  - Extremely loud piezo buzz tone possible
  - Head and side magnets
  - Reception range 300 m for red lasers
  - 200 m for green lasers
  - Extremely durable design

**Inclusive:** universal mount, battery

ORDER NO.	EAN-CODE	PU
028.71	4 021563 663262	1



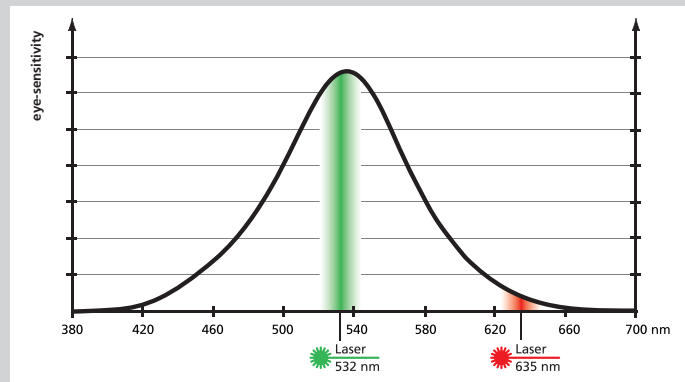


## Interior finishing and building construction



### Green laser technology

Over what distance a laser is visible to the eye depends on the colour or wavelength of the laser beam. This has to do with the physiology of the human eye – green appears brighter to us than red. Depending on the ambient light conditions, therefore, green lasers are many times more visible than red ones – and indeed indoors, up to 12 times more.



Unlike red lasers, green laser light can only be generated indirectly. This limits working temperature such that green lasers are darker outside a temperature range of 0 – 40° C or 0 – 50 °C. Energy consumption is also greater, this reduces battery operating time.

### Quadrum Green 310 S



#### Fully automatic rotary laser with green laser technology

- With additional red plumb laser
- 5° self-levelling range, accuracy 1 mm / 10 m
- Laser modes: spot, scan, rotary and hand receiver mode
- All functions can be controlled remotely.
- Green laser technology with 0°C - 40°C temperature range
- Laser receiver range up to 200 m radius

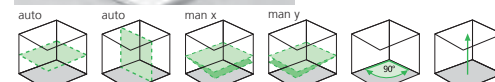
**Inclusive:** Quadrum Green, SensoLite 310, universal mount, remote control, charger, rechargeable battery, battery holder, carrying case, batteries

ORDER NO.	EAN-CODE	PU
053.00.02A	4 021563 677856	1



Laser 532 nm
 SENSOR AUTOMATIC
 lock
 ADS Tilt
 IP 66
 5/8"
 4x C
 RECHARGE 7h
 ALU

### Revolution Green 310 S



#### Robust, fully automatic rotary laser with green laser technology

- 4° self-levelling range, accuracy 0,75 mm / 10 m
- Laser modes: spot, scan, rotary and hand receiver mode
- Single-slope function for manual tilt of an axis in automatic operation, even if ADS tilt is active.
- All functions can be controlled remotely using the Commander 50.
- Green laser technology with 0°C - 45°C temperature range
- Laser receiver range up to 200 m radius

**Inclusive:** Revolution Green, SensoLite 310, universal mount, Commander 50, charger, rechargeable battery, battery holder, carrying case, batteries

ORDER NO.	EAN-CODE	PU
052.00.02A	4 021563 677771	1



Laser 532 nm
 SENSOR AUTOMATIC
 lock
 ANTI SHAKE
 ADS Tilt
 IP 66
 5/8"
 4x C
 RECHARGE 4h
 HARD



# Rotary laser for outdoor areas





# ABOVE AND BELOW GROUND CONSTRUCTION

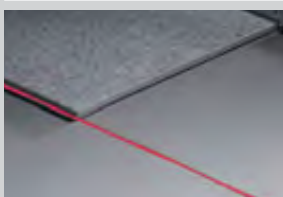
Rotary lasers are used in above and below ground construction for the most diverse types of survey work. Their primary purposes involve exact levelling at great distance and for establishing alignments and slopes in all visibility conditions. The robust Laserliner rotary lasers are designed for rough construction site activity, even in extreme situations.

## Powerful technology



**SENSOR**  
AUTOMATIC

Electronic vials and positioning motors controlled by temperature-stable sensors for automatic alignment of devices. The devices are set to their initial position and align themselves automatically.



**Laser**  
635 nm

Rotary lasers with 635 nm technology have a large temperature range in which they operate reliably. Visibility is limited to indoor area applications.



**ANTI**  
SHAKE

Additional function for all units with „Sensor Automatic“: The electronic permanently levels the units even if these are moving. For quick levelling, on vibrating surfaces and windy weather.



**ADS**

*Tilt* Prevents erroneous or inaccurate measurements: Continuous monitoring of the alignment of the laser is activated 30 or 45 seconds after automatic levelling. Measurements will be suspended as a precaution if the device is disturbed unintentionally or moves due to the influence of external factors.



IP 66 IP 67

Protection against dust and water – The measuring tools are characterised by specific protection against dust and rain.



**SHUTTER**

Various segments of the laser output can be shut off separately in order to eliminate disturbing reflections and interference when several rotary lasers are used simultaneously on the construction site.

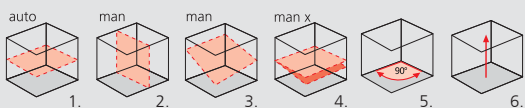


**Laser reception range** **red**

SensoLite 310	up to 300 m
SensoMaster 400	up to 400 m



SensoLite 310



The space grids show the laser planes and functions.  
**1.** Horizontal levelling    **3.** SingleSlope function    **5.** 90° angle  
**2.** Vertical levelling    **4.** DueSlope function    **6.** Plumb function

**auto:** Automatic alignment    **man:** Manual alignment

## Above and below ground construction



### Overview

				
	Quadrum OneTouch	Centurium	DuraMax XPro	DualAxis
Horizontal	auto	auto	auto	auto
Vertical	–	auto	–	–
Accuracy / 10 m	0.75 mm	0.5 mm	0.5 mm	0.5 mm
Reference laser beam	–	●	–	–
Plumb laser	–	–	–	–
Levelling range	5°	5°	5°	5°
Levelling principle	Sensor-Automatic	Sensor-Automatic	Sensor-Automatic	Sensor-Automatic
AntiDriftSystem (Tilt)	●	●	●	●
Vertical fine adjustment	–	●	–	–
AntiShake	–	–	●	●
Slope	DualSlope	DualSlope	Single-/DualSlope	Single-/DualGrade
Remote control	●	●	●	●
Receiver mode	●	●	●	●

● = available

### Rotary lasers for professional use



Laserliner instruments are available in sturdy carrying cases.  
 HARD: plastic carry case  
 ALU: case with reinforced aluminium corners



**Inclusive:** Centurium, SensoLite 310, universal mount, remote control, high-performance battery, battery holder, charger, carrying case, batteries



Battery system recharge with original accessories

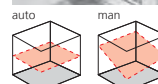


Above and below ground construction



Quadrum OneTouch 310 S

NEW



**One-button operation rotary laser. For horizontal levelling over great distances.**

- Simple one-button operation
- 5° self-levelling range, accuracy 0.75 mm / 10 m
- Laser modes: spot, scan, rotary and hand receiver mode
- All functions can be controlled remotely.
- The 4 IR receiving diodes allow this instrument to be remotely operated from all sides.
- Integrated safe-operating concept OneTouch
- Laser receiver range up to 300 m radius

**Inclusive:** Quadrum OneTouch, SensoLite 310, universal mount, remote control, charger, carrying case, batteries

ORDER NO.	EAN-CODE	PU
053.200A	4 021563 677849	1



**OneTouch operation**

The laser is switched over from setup mode (AntiShake) into secure mode (ADS-Tilt) with a single press of a button - simple operation.

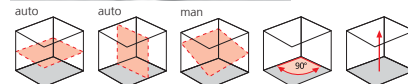


Above and below ground construction



**Centurium 310 S**

**NEW**



- High precision rotary laser for levelling over great distances – horizontal and vertical**
- 5° self-levelling range, accuracy 0.5 mm / 10 m
  - Laser modes: spot, scan, rotary and hand receiver mode
  - All functions of the rotary laser can be controlled up to a distance up to 40 m with the remote control Control C40.
  - The 4 IR receiving diodes allow this instrument to be remotely operated from all sides
  - Laser receiver range up to 300 m radius

**Inclusive:** Centurium, SensoLite 310, universal mount, remote control Control 40, high-performance battery, battery holder, charger, carrying case, batteries

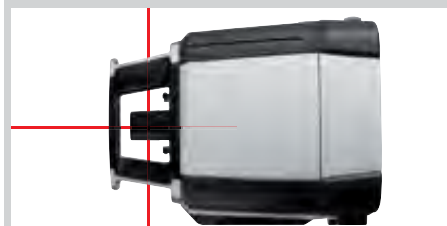
ORDER NO.	EAN-CODE	PU
056.000A	4 021563 677832	1



Available in April 2011.



Extremely stable metal head



Vertical operating position

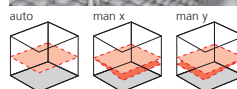




Above and below ground construction



DuraMax XPro



**High precision rotary laser with shutter function – horizontal levelling over great distances**

- 5° self-levelling range, accuracy 0.5 mm / 10 m
- Shutter function: The working range of the laser beam can be limited to 4 different segments.
- Laser modes: spot, scan, rotary and hand receiver mode
- Single-slope function for manual tilt of an axis in automatic operation, even if ADS tilt is active.
- All functions can be controlled remotely using the Commander 50.

**Accessories included:**

universal mount, Commander 50, rechargeable batteries, charger, carrying case, batteries



**Shutter function**

Various segments of the laser output can be shut off separately in order to eliminate disturbing reflections and interference when several rotary lasers are used simultaneously on the construction site.

**Set DuraMax XPro 310 S**

up to 300 mm with SensoLite 310 laser receiver

ORDER NO.	EAN-CODE	PU
027.20.09A	4 021563 677795	1



**Set DuraMax XPro 400 S**

up to 400 m with SensoMaster 400 laser receiver  
 - 127 mm long laser receiver unit  
 - Highly accurate distance reading for laser level

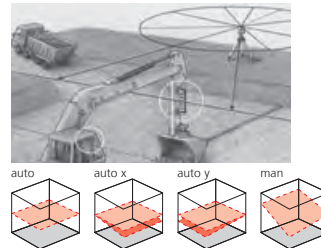
ORDER NO.	EAN-CODE	PU
027.20.10A	4 021563 673193	1



Above and below ground construction



**DualAxis Laser**



**IQ**

**2-axis grade laser of extremely durable design for civil and construction engineering**

- 5° self-levelling range, accuracy 0.5 mm / 10 m
- Shutter function: The working range of the laser beam can be limited to 4 different segments.
- Deviation from the horizontal plane can set digitally in X and Y axes.
- Laser modes: rotary and hand receiver mode
- High maximum speed of 1100 rpm
- The telescopic sight supplied with the device makes alignment easy
- Large illuminated LCD
- All functions can be controlled remotely using the Commander DAL.

**Accessories included:**

universal mount, Commander DAL, telescopic sight, rechargeable batteries, charger, carrying case, batteries



**Telescopic sight for adjusting the DualAxis-Laser**

The telescopic sight ensures precision adjustment of the DualAxis-Laser X and Y axes. Simple 90° rotation facilitated by magnetic fastening.

**Set DualAxis Laser 310 S**

up to 300 mm with SensoLite 310 laser receiver

ORDER NO.	EAN-CODE	PU
043.00.09A	4 021563 677788	1



**Set DualAxis Laser 400 S**

- up to 400 m with SensoMaster 400 laser receiver
- 127 mm long laser receiver unit
- Highly accurate distance reading for laser level

043.00.10A	4 021563 665709	1
------------	-----------------	---





Above and below ground construction



**SensoLite 410 Set**

**NEW**



**High-performance laser receiver with extremely large receiving range for red and green rotary lasers**

- Extremely long laser reception range for quick laser acquisition at great distances
- LC displays at front and rear. Melodies indicate the level of the laser beam.
- At the front there are extremely bright 3-colour LEDs for remote identification as well as an optionally available extremely loud piezo-buzzer
- With improved universal holder
- Strong head and side magnets
- Circular bubble level
- Receiving range for red laser up to 400 m
- Receiving range for green laser up to 200 m

Available in July 2011.



Super bright signal LED: High, Low, Target

**Inclusive:** universal mount, battery

ORDER NO.	EAN-CODE	PU
028.75	4 021563 677214	1



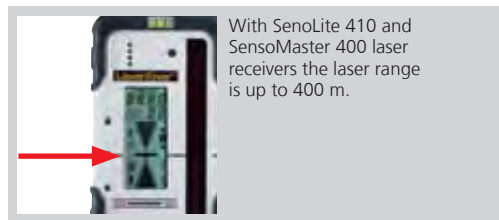
**SensoMaster 400 set**



**High performance laser receiver for rotary lasers**

- 127 mm long laser receiver unit
- Millimetre exact distance reading for laser level
- Height difference to laser level is indicated by the double-sided LC display.
- Three bright LED's on the front plus, if desired, an extreme loud piezo sound show the height in relationship to the laser plane.
- Has a special protective rubber case
- Receiving range for red laser up to 400 m

**Not suitable for green lasers.**



**Inclusive:** universal mount, battery

ORDER NO.	EAN-CODE	PU
028.80	4 021563 663934	1



Above and below ground construction



**SensoPilot Pro**



**Machine laser receiver for construction machine control**

- In combination with a rotary laser, the SensoPilot serves as a continuous guide for height control.
- Each of its four laser receiver units, which measure 25 cm in length, can receive the laser beam in a 360° radius.
- Large clearly visible LEDs show the laser's plane.
- Range 200 m
- Highly durable waterproof and dust-proof housing
- With powerful magnets to fasten the device to the machine

**Inclusive:** built-in battery, charger, 12/24 V battery cable, carrying case

**Not suitable for green lasers.**



ORDER NO.	EAN-CODE	PU
035.00A	4 021563 658787	1



**Remote Display for SensoPilot**



**This remote display allows reference height to be monitored from the driver's seat of the construction machine.**

- This is the ideal complement for the SensoPilot mobile laser receiver
- Very robust design with mounting socket
- Water and dust-proof housing

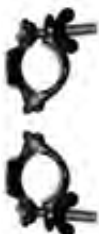
**Inclusive:** connection cable for SensoPilot

ORDER NO.	EAN-CODE	PU
035.01	4 021563 658800	1



**Mounting Brackets**

for SensoPilot (2 pcs.)



ORDER NO.	EAN-CODE	PU
035.02	4 021563 660452	1





# Precision Altimeter



## Floor and foundation work



The ZipLevel is a professional altitude measuring device. Its patented gas-liquid system permits quick, simple measurements of altitude without any other tools. This makes one-person operation possible for effective, economical measurements. The digital measuring module indicates all measurements and permits easy operation.

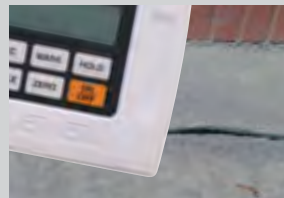
- Fast measuring times by a new sensor technology.
- Scale and level without sight contact to digital module (e.g. at great heights or in deep pits).
- Versatile: Can be adjusted to all surfaces of the measurement module.



Sensing device and electronic housing



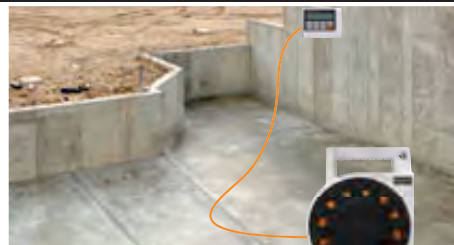
Mounted by means of earth spike



Protective rubber casing for electronic housing (ZipLevel Pro 35)



### ZipLevel



#### Digital measurement system for height measurements

- The extremely stable measurement line is optimally protected by an anti-kink guard for use in rough environments.
- Space in the housing is provided for the digital measuring unit

#### ZipLevel 25

- Up to a working range of 50 m
- Measuring range: horizontal  $\pm 25$  m, vertical  $\pm 6$  m, accuracy  $\pm 2$  mm

#### ZipLevel Pro 35

- Up to a working range of 70 m
- Measuring range: horizontal  $\pm 35$  m, vertical  $\pm 6$  m, accuracy  $\pm 2$  mm



ZipLevel 25 inclusive: batteries

ORDER NO.	EAN-CODE	PU
092.010A	4 021563 664917	1

ZipLevel Pro 35 inclusive: measurement module with protective rubber sleeve, feeler rod, 2 earth spikes, batteries

092.020A	4 021563 664924	1
----------	-----------------	---



### Feeler rod



#### Feeler rod ensures a practical working height and optimal calibration

- Height, about 122 cm

ORDER NO.	EAN-CODE	PU
092.011A	4 021563 664931	1





# Systainer®





# Systainer®

Laserliner measuring technology in the practical Systainer case for professionals. More mobility with system – efficient and space-saving stacking. Solid in daily use.



High quality synthetic material protects instruments in daily use.



Quick connection of one or more cases.



One click and everything is under control – easy to use.



Very practical: Full sized box insert for small parts.



High-grade foam material insert protects during transport



Systainer case – in 4 different sizes

Mini boxes can be combined with the Systainer III

## MasterSet I SYS <sup>(1)</sup>

**The measuring set for interior work – measuring, alignment, levelling, scanning**  
– Further information on measuring instruments can be found on Page 31, 33, 37 and 44



**Inclusive:** LaserRange-Master Pocket, SuperCross-Laser 2 with tripod-/wall mount, MultiFinder Pro, DigiLevel Compact, batteries, complete in Systainer

ORDER NO.	EAN-CODE	PU
100.0015	4 021563 667109	1

**PT**

## MasterSet II SYS <sup>(1)</sup>

**The professional measuring set for in- and exterior – measuring, alignment, levelling**  
– Further information on measuring instruments can be found on Page 34, 37 and 47



**Inclusive:** AutoCross-Laser 3 RX with laser receiver, universal mount, LaserRange-Master Pocket, DigiLevel Pro 30, batteries, complete in Systainer

ORDER NO.	EAN-CODE	PU
100.0025	4 021563 666942	1

**PT**

## MasterSet III SYS <sup>(1)</sup>

**The laser measuring set for in- and exterior – Automatic rotary laser and crossline laser with 2 laser lines**  
– Further information on measuring instruments can be found on Page 47 and 66



**Inclusive:** AquaPro 120 with laser receiver SensoLite 120, universal mount, wall- / floor base, high-performance batteries, mains unit / charger, AutoCross-Laser 2 with magnetic base, batteries, complete in Systainer

ORDER NO.	EAN-CODE	PU
100.0035	4 021563 668588	1

**PT**



Systainer®

**AutoCross-Laser 4C PowerBright RX SYS**



**Duty crossline laser with 4 laser lines and plumb – for indoor and outdoor applications**  
 – Further information on measuring instrument can be found on Page 55

**Inclusive:** AutoCross-Laser 4C PowerBright, RangeXtender, batteries, rechargeable batteries, quick charger, tripod adapter (for crank tripods), rubber caps, complete in Systainer

ORDER NO.	EAN-CODE	PU
031.3115	4 021563 666935	1



**AutoCross-Laser 7C PowerBright SYS**



**Cross-line laser with 7 super - bright laser lines and plumb laser**  
 – Further information on measuring instrument can be found on Page 55

**Inclusive:** AutoCross-Laser 7C PowerBright, rechargeable batteries, quick charger, laser enhancement glasses, tripod adapter (for crank tripods), rubber caps, complete in Systainer

ORDER NO.	EAN-CODE	PU
049.2105	4 021563 672028	1



**AutoCross-Laser 7C PowerBright RX SYS**  
 as above without laser enhancement glasses but with RangeXtender, including battery, universal mount, complete in Systainer

ORDER NO.	EAN-CODE	PU
049.2115	4 021563 672011	1

**PrecisionCross-Laser 5P RXR SYS (1)**



**High-precision cross-line laser with 5 laser lines, plumb laser and laser receiver and motor-powered housing alignment**  
 – Further information on measuring instrument can be found on Page 56

**Inclusive:** PrecisionCross-Laser 5P, RangeXtender, universal mount, remote control, rechargeable batteries, quick charger, tripod adapter (for crank tripods), batteries, complete in Systainer

ORDER NO.	EAN-CODE	PU
039.00.005	4 021563 668625	1



**PrecisionCross-Laser 10 RX SYS (1)**



**High-precision cross-line laser with 10 laser lines**  
 – Further information on measuring instrument can be found on Page 57

**Inclusive:** PrecisionCross-Laser 10, RangeXtender, universal mount, rechargeable batteries, quick charger, tripod adapter (for crank tripods), battery, complete in Systainer

ORDER NO.	EAN-CODE	PU
039.4005	4 021563 672004	1



**EvolutionCross-Laser 8P PowerBright RX SYS**



**High-precision cross-line laser with 8 super-bright laser lines and plumb laser**  
 – Further information on measuring instrument can be found on Page 58

**Inclusive:** EvolutionCross-Laser 8P PowerBright, RangeXtender, universal mount, rechargeable batteries, quick charger, tripod adapter (for crank tripods), rubber caps, battery, complete in Systainer

ORDER NO.	EAN-CODE	PU
048.2005	4 021563 671922	1



**Revolution SYS**



**Fully automatic rotary laser**  
 – Further information on this rotary laser can be found on Page 68

**Accessories included:**  
 Revolution, universal mount, Commander 50, rechargeable battery, charger, battery holder, batteries, complete in Systainer

**Set Revolution SYS 310 S**  
 with laser receiver SensoLite 310 up to 300 m

ORDER NO.	EAN-CODE	PU
052.00.075	4 021563 672059	1



**Set Revolution SYS 400 S**  
 with laser receiver SensoMaster 400 up to 400 m

ORDER NO.	EAN-CODE	PU
052.00.105	4 021563 672042	1

Systainer®



**Revolution Green SYS**

**Robust fully automatic rotary laser with green laser technology**  
 – Further information on this rotary laser can be found on Page 69



**Inclusive:** Revolution Green, universal mount, Commander 50, rechargeable battery, charger, battery holder, batteries, complete in Systainer

ORDER NO.	EAN-CODE	PU
052.00.015	4 021563 672035	1



**Set Revolution Green SYS 310 S**  
 with laser receiver SensoLite 310 up to 300 m

052.00.025	4 021563 677764	1
------------	-----------------	---



**VideoFlex XL SYS**

**Compact inspection camera for visual inspections of areas which are difficult to access, featuring record function**  
 – Further information on measuring instrument can be found on Page 20



**Inclusive:** VideoFlex, FlexCamera 2 m / Scope Focus 25 cm, USB-cable, 2 GB SD-card, quick-charger, batteries, complete in Systainer

ORDER NO.	EAN-CODE	PU
082.0565	4 021563 671434	1



**2 m**  
 VERSION  
 Focus 25 cm

**Case empty**

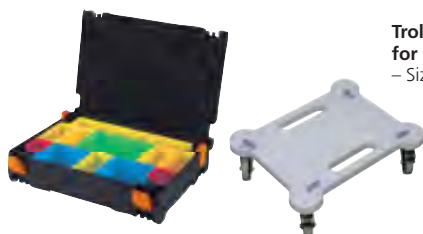


**Sturdy case in 4 sizes**  
 – Size 1, 105 x 400 x 300 mm  
 – Size 2, 157,5 x 400 x 300 mm  
 – Size 3, 210 x 400 x 300 mm  
 – Size 4, 315 x 400 x 300 mm

**Mini case I + II only for size 3**  
 – Mini-box I: 70 x 268 x 171 mm  
 – Mini-box II: 87 x 268 x 171 mm

	ORDER NO.	EAN-CODE	PU
<b>Size 1</b>	100.1015	4 021563 672646	1
<b>Size 2</b>	100.1025	4 021563 672653	1
<b>Size 3</b>	100.1035	4 021563 672660	1
<b>Size 4</b>	100.1045	4 021563 672677	1
<b>Mini-box I</b>	100.2015	4 021563 672691	1
<b>Mini-box II</b>	100.2025	4 021563 672707	1

**Case with BoxTray / trolley board**



**Case size 1 with storage compartments for small parts**  
 – Size 1, 105 x 400 x 300 mm

**Trolley board – practical base for several cases**  
 – Size: 105 x 400 x 300 mm.

	ORDER NO.	EAN-CODE	PU
<b>Case + BoxTray</b>	100.1115	4 021563 672684	1
<b>Trolley board</b>	100.0005	4 021563 667390	1



# Automatic Levelling Instruments





# AUTOMATIC LEVELLING INSTRUMENTS

Levelling instruments are used for special tasks on large building sites. They work like a precision telescope, with an artificial target line generated at a specified height - the horizontal reference. An automatic leveller automatically adjusts the target line in the horizontal plane.



Horizontal circle with endless vernier adjustment for precise targeting.



Practical, adjustable fold-up mirror for simple alignment with a circular spirit level.



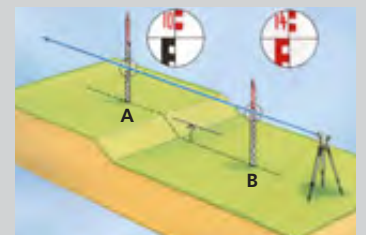
Long-distance scale with E graduation



The 165 cm tall, ball-head tripod allows an AL 26 to be aligned rapidly.

## Measuring with level

To determine the height difference in the example shown here, the levelling staff is first set up at Point A. The optical system of the level has automatically aligned itself horizontally. With the help of the optical sight marking, it is now possible to read off the distance between Point A and the sight line shown in blue. The staff can now be positioned at any Point B, and the second measuring point read off through the sight.



## Calculation of height difference

Height A - Height B = Height difference H



Practical universal devices

Automatic Optical Level 22 Classic



**Robust, reliable levelling instrument with bright, high-performance lenses**

- Practical quick target finder
- Magnetically damped compensator
- Magnification 22 x
- Standard deviation 2,5 mm / km
- 360° horizontal circle, 400 gon on request
- The cross hair can be calibrated in all directions due to high quality 2 axis.
- With transport securing device

**Inclusive:** AL 22, plumb bob, allen wrench, calibration needle, carrying case with strap

ORDER NO.	EAN-CODE	PU
080.82	4 021563 652563	1

**PT**

HARD

Automatic Optical Level 22 Classic set



Levelling set with tripod and levelling staff



Inclusive



**Inclusive:** AL 22 Classic, aluminium lightweight tripod 165 cm, telescopic levelling staff 4 m

ORDER NO.	EAN-CODE	PU
080.82-0	4 021563 664702	1

**PT**

HARD

Automatic Optical Level 26 Classic



**Robust, reliable levelling instrument with bright, high-performance lenses**

- Practical quick target finder
- Magnetically damped compensator
- Magnification 26 x
- Standard deviation 1,5 mm / km
- 360° horizontal circle, 400 gon on request
- The cross hair can be calibrated in all directions due to high quality 2 axis.
- With transport securing device

**Inclusive:** AL 26, plumb bob, allen wrench, calibration needle, carrying case with strap

ORDER NO.	EAN-CODE	PU
080.83	4 021563 652570	1

**IQ**

HARD

Automatic Optical Level 26 Classic set



Levelling set with tripod and levelling staff



Inclusive



**Inclusive:** AL 26 Classic, ball-head tripod 165 cm, telescopic levelling staff 5 m

ORDER NO.	EAN-CODE	PU
080.83-1	4 021563 663637	1

**IQ**

HARD



# Tripods, levelling staffs and fasteners





# THE BASIS FOR SOUND WORK

To make full use of all the capabilities offered by a rotation laser or automatic level, a tripod is necessary. Laserliner offers an extensive range of tripods, since different tasks call for different technical solutions. Wallmounts ease ceiling work.



Quick-release lock for equal extension of all legs



An all-round steel chain prevents the legs from spreading on smooth floors



The seat for the instrument is milled and surface-ground



Hook for plumb bob directly beneath the fixing screw



Sturdy steel feet for secure positioning



Professional crank lift on the professional crank tripod with mm graduation



Adjustable carrying strap



Crank lift with mm graduation

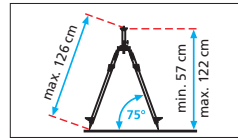


Laser and levelling device accessories

**Compact Tripod 120 cm**



**High-quality mini crank tripod of aluminium**  
 – Suitable for use on different surfaces through special combination feet (rubber/steel top)  
 – 5/8" thread adapter



ORDER NO.	EAN-CODE	PU
080.29	4 021563 652266	1



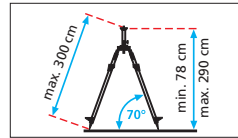
**PT**

**Compact Tripod 300 cm**

**NEW**



**High-quality, very compact crank tripod made of aluminium**  
 – 5/8" thread adapter  
 – Circular vial  
 – Multi-section telescoping tripod legs and crank height adjustment permit large adjustment range.  
 – Special combination feet (rubber/steel tips) facilitate adaptation to different surfaces.



ORDER NO.	EAN-CODE	PU
080.37	4 021563 670666	1



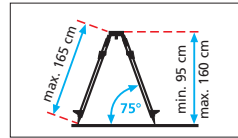
**PT**

**Aluminium Lightweight Tripod 165 cm**



**Lightweight design with milled mounting surface**  
 – 5/8" thread adapter  
 – Sturdy steel feet  
 – Quick-release lock

**Not for ACL 2C, ACL 3C, ACL 4C, ACL 360°, ECL 8P, PCL**



**Inclusive:** hook for plumb bob, carrying strap

ORDER NO.	EAN-CODE	PU
080.00	4 011879 633967	1



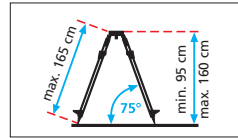
**PT**

**Ball-head Tripod 165 cm**



**Lightweight design with ball shaped mounting surface**  
 – 5/8" thread adapter  
 – Sturdy steel feet  
 – Quick-release lock

**Special for automatic levels AL 22 / 26.**



**Inclusive:** hook for plumb bob, carrying strap

ORDER NO.	EAN-CODE	PU
080.06	4 021563 658190	1



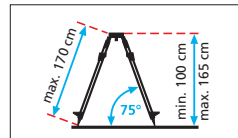
**IQ**

**Aluminium Tripod 170 cm**



**Heavy design with milled mounting surface**  
 – 5/8" thread adapter  
 – Sturdy steel feet  
 – steel chains  
 – Quick-release lock

**Not for ACL 2C, ACL 3C, ACL 4C, ACL 360°, ECL 8P, PCL**



**Inclusive:** hook for plumb bob, carrying strap

ORDER NO.	EAN-CODE	PU
080.10	4 011879 630935	1



**IQ**





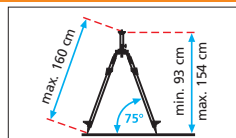
Laser and levelling device accessories



**Crank Tripod 160 cm**



- Design with crank height adjustment and quick-lock**
- 5/8" thread adapter
  - Circular vial
  - Sturdy steel feet
  - steel chains



**Inclusive:** hook for plumb bob, carrying strap

ORDER NO. EAN-CODE PU

080.30 4 011879 630959 1

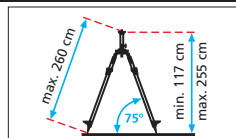


**PT**

**Professional Crank Tripod 260 cm**



- Heavy design with integrated professional crank height adjustment**
- 5/8" thread adapter
  - Wide range of adjustment through extremely high lift
  - Crank can be fixed in place without any play.
  - Sturdy steel feet
  - steel chains



**Inclusive:** carrying strap

ORDER NO. EAN-CODE PU

080.33 4 021563 650637 1

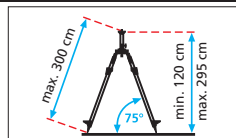


**IQ**

**Professional Crank Tripod 300 cm**



- Heavy design with integrated professional crank height adjustment**
- 5/8" thread adapter
  - Extremely long crank lift allows a large range of adjustment
  - Crank lift can be fixed and adjusted without play
  - Special combination feet (rubber steel tips) facilitate adaptation to different surfaces.
  - Sturdy steel feet
  - steel chains



**Inclusive:** carrying strap

ORDER NO. EAN-CODE PU

080.34 4 021563 662296 1

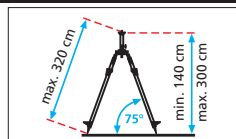


**IQ**

**Professional Crank Tripod 320 cm**



- Super-robust design for outdoor areas**
- 5/8" thread adapter
  - Suitable for windy conditions thanks to stability fitting and double-acting quick release lock
  - Circular vial
  - Sturdy steel feet
  - Three-legged frame for maximum stability
  - Crank lift can be fixed and adjusted without play
  - Special combination feet (rubber steel tips) facilitate adaptation to different surfaces.



**Inclusive:** hook for plumb bob, carrying strap

ORDER NO. EAN-CODE PU

080.36 4 021563 663927 1



**IQ**

Laser and levelling device accessories

**Telescopic Stand 330 cm**



High-quality aluminium telescopic stand, ideal for quick changes in applications where working positions vary

- The stand is clamped between floor and ceiling then the laser measuring tool is turned manually to set it to the correct height ready for operation.
- 5-piece design for easy transport
- Height approx. 330 cm



Inclusive: softbag

ORDER NO.	EAN-CODE	PU
090.120A	4 021563 665372	1



**PT**



**Telescopic adapter**

NEW



Adapter for telescopic stand 330 cm

- For retrofitting and multiple use of laser measuring instruments on telescopic stand.
- With additional 1/4" thread

For all laser measuring instruments



ORDER NO.	EAN-CODE	PU
090.120.1	4 021563 661084	1



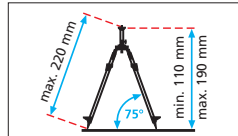
**PT**

**MiniStand 1/4"**



Mini-tripod made of aluminium

- for LRM pocket, SCL 2, SCL 3 etc.
- 1/4" tripod connection
- Ball joint
- Telescoping tripod legs



ORDER NO.	EAN-CODE	PU
090.130A	4 021563 670550	1



**PT**

**FlexPod**

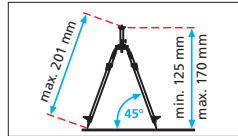
NEW



Nylon thermoplastic mini stand for LRM Pocket, LRM Pocket Pro etc.

- 1/4" tripod connection
- Ball joint and clamping screw for stepless adjustment
- With Velcro fastener for securing to shafts, extruded sections and roof laths
- Tripod feet with non-slip rubber caps
- Extendable

Available in April 2011.



ORDER NO.	EAN-CODE	PU
090.131A	4 021563 677245	1



**PT**

**Wall Mount**



For all Laserliner rotary- and linelasers

- With height adjustment and clamp bracket for attachment to construction elements.



ORDER NO.	EAN-CODE	PU
080.70	4 011879 631178	1



**PT**

**Wall Mount Pro**



For all Laserliner rotary- and linelasers

- With positioning wheel for precise height adjustment, clamp holder for attachment to structural elements.



ORDER NO.	EAN-CODE	PU
080.71	4 021563 658817	1



**IQ**



## Laser and levelling device accessories

### Angle Bracket 5/8"

Professional design with angle scale  
 – Suitable for all laser measuring tools



ORDER NO.	EAN-CODE	PU
080.75	4 021563 662821	1



### TelePilot 5 m

Professional telescopic measure with window  
 – Allows even great heights to be read with accuracy  
 – Guided, inside steel tape measure  
 – For inside and outside measurement  
 – With lock for each individual section



ORDER NO.	EAN-CODE	PU
075.105	4 011879 635398	1



A comprehensive assortment of levelling staffs to cover the most diverse of applications. Particularly well suited for measuring ground levels or interior/exterior measurements. Suitable for use with automatic levelling and laser measuring instruments.

### Flexi Levelling Staff red / green

For all measurement of floor height  
 – Reference height approx. 80-190 cm ± 50 cm measurement range, max. length approx. 240 cm  
 – Height difference can be read off directly with no calculation necessary  
 – Unmatched by any normal levelling staff



**Flexi levelling staff red**  
 – Ideal for red lasers

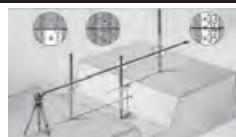
**Flexi levelling staff green**  
 – Ideal for green lasers

	ORDER NO.	EAN-CODE	PU
red	080.50	4 011879 631147	1
green	080.51	4 021563 664948	1



### Flexi-Slider

Optimum positioning aid for laser receiver at Flexi levelling staff  
 – Smooth slider for quick and easy use  
 – With quick-action clamp



ORDER NO.	EAN-CODE	PU
080.52	4 021563 673292	1



### Telescopic Levelling Staff

Easily legible, highly stable levelling staffs for use even under extreme conditions  
 – Made of strong aluminium section  
 – For optical levels and rotary lasers  
 – Telescopic Levelling Staff 4 m: max. height 4 m, min. height 1.19 m  
 – Telescopic Levelling Staff 5 m: max. height 5 m, min. height 1.22 m



ORDER NO.	EAN-CODE	
080.40	4 011879 630966	4 m
080.41	4 011879 630973	5 m



Laserliner®

# Laserliner Shop

Your Premium Partner  
More than 15 Years Expertise





## Holsters and pockets for tools

The Laserliner BAX system is ideal for daily use on the building site – the tools are always at hand and securely stored. The pockets fit comfortably on any tool or clothing belt.



Two metal buttons on this leather strap makes it universal.



Unique design – suitable for left and right handed users



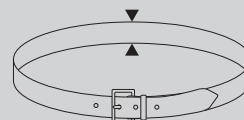
Versatile slots for screwdrivers and other tools – made from real leather.



Heavy-duty steel handle with ergonomic shape of grip made of foam makes lifting more secure and comfortable.

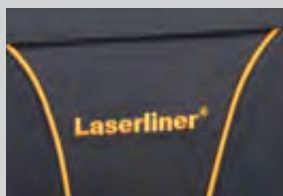


Stainless steel side tool holder



### Maximum width of belt

ToolBAX-Electro	80 mm
ToolBAX-Multi	80 mm
ToolBAX-Classic	80 mm
ToolBAX-Holster	80 mm
ToolBAX-Uni	55 mm
PhoneBAX-H	45 mm
PhoneBAX-V	55 mm



Made from sturdy nylon with stitched Laserliner logo.

### ToolBAX-Classic



#### Unique design – suitable for left and right handed users

- The holder sits comfortably on any tool belt or normal clothing belt
- Two metal buttons on this leather strap make it more universal when use different size of the machines
- Plenty of place for Laserliner tools



ORDER NO.	EAN-CODE	PU
101.014A	4 021563 673933	2

PT

### ToolBAX-Multi



#### Plenty of place for Laserliner tools

- Side-Gate stainless steel metal tool holder swings to keep your hammer at a comfortable angle
- New solution with side gate lets you easily put the tool in without looking at the holder
- The pouch sits comfortably on any clothing belt
- Screwdriver holder made from real leather provide convenient storage



ORDER NO.	EAN-CODE	PU
101.011A	4 021563 673346	2

PT

### ToolBAX-Electro



#### Ready to carry a full range of specialized electrical tools and Laserliner tools

- Chain hook provides easy access insulation tapes or flex
- Screwdriver holders made of real leather provide convenient storage



ORDER NO.	EAN-CODE	PU
101.012A	4 021563 673339	2

PT

## Holsters and pockets for tools



### ToolBAX-Holster



- Unique design – suitable for left and right handed user**
- Designed to hold cordless drills
  - Two metal buttons on this leather strap make it more universal when use different size of the machines



ORDER NO.	EAN-CODE	PU
101.013A	4 021563 673360	2

**PT**

### ToolBAX-Uni



- Universal tool – loops holds your tools and lasers snug so it is always handy when need it.**
- The pouch sits on any clothing or heavy-duty belt
  - Carabiner – to hang any additional small elements



ORDER NO.	EAN-CODE	PU
101.010A	4021563 673353	2

**PT**

### OpenBAX



- Open design for quick tool location**
- Riveted in critical points for truly industrial strength with galvanized washers top and bottom
  - Square shape support keeps the case stable and vertical to prevent any danger of spillage of equipment
  - Heavy Duty steel frame



ORDER NO.	EAN-CODE	PU
101.042A	4 021563 673384	2

**PT**

### CaseBAX



- Metal reinforcement for ubreakable strength**
- Aluminium edges first of all prevent the case from damaging and additionally help to keep the shape to let the case serve you with years of wear and hard use in different conditions
  - Riveted – for truly industrial strength with galvanized washers top and bottom



ORDER NO.	EAN-CODE	PU
101.041A	4 021563 673377	2

**PT**



Belt and mobile phone pockets

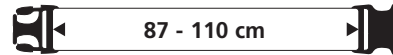


**ToolBAX-Belt**



With strong 50 mm polypropylene quick release buckle

- Made of 5 layers of materials to give 100% quality, durability and comfort of the belt: PP tape, polyester 600 D, PE strap, VELCRO and 3D mesh



ORDER NO.	EAN-CODE	PU
101.020A	4 021563 673391	5

**PT**

**PhoneBAX-H**



The holder sits comfortably on any tool belt or normal clothing belt

- The flap is equipped with strong hook and loop fastening to insure your Iphone is held securely



ORDER NO.	EAN-CODE	PU
101.030A	4 021563 673407	5

**PT**

**PhoneBAX-V**



Vertical mobile phone holder with Laserliner logo on the flap

- Sits on any tool belt or clothing belt



ORDER NO.	EAN-CODE	PU
101.031A	4 021563 673414	5

**PT**



## Advertising material and textiles

### Pad / ballpoint pen



**Note pads in two sizes**  
 – 2-colour printed, punched holes  
 – 50 sheets mat, white paper

**Ballpoint pens**  
 – Business quality,  
 black with blue refill  
 – 1-colour logo

DIN A4

DIN A5

Ballpoint pen

ORDER NO.	EAN-CODE	PU
020.80.50.1	4 021563 666225	1
020.80.51.1	4 021563 666232	1
020.80.49.1	4 021563 665839	1



### CarSpotLight CSL 50



**Compact flashlight for cigarette lighter**  
 – 12 Volt, for any make of vehicle  
 – Metal, black

**Inclusive:** CarSpotLight CSL 50  
 packaging box, batteries

ORDER NO.	EAN-CODE	PU
3.7412	4 000844 427632	1



### Laserpointer Business Green



**Modern business presentation aid  
 for pointing in bright environments**  
 – Green laser point  
 – Black metal housing with soft-grip surface  
 – Laser class 2, < 1mW  
 – Range 100 m



**Inclusive:** Laserpointer Green,  
 metal box, batteries

ORDER NO.	EAN-CODE	PU
020.100A	4 021563 665365	1



Laser 532 nm
 2x AAA
 HARD

### Laserliner Polo-Shirt



**Short sleeve, black**  
 – Printed on both sides  
 – 100% heavy-duty cotton



	PU
Size M	1
Size L	1
Size XL	1
Size XXL	1



### Flag



**Outdoor flag**  
 – Size: Upright format 1.50 x 3.50 m  
 – 2-colour, UV-resistant polyester,  
 – With reinforced seams  
 – 4 snap hooks

ORDER NO.	EAN-CODE	PU
020.940.01	4 021563 669097	1



### RollUp Banner



**Indoor Banner**  
 – Banner size 85 x 200 cm  
 – Aluminium  
 – Display system

**Inclusive:** softbag

ORDER NO.	EAN-CODE	PU
020.80.8-39	4 021563 665341	1



HARD





**SERVICE**

UMAREX GmbH & Co. KG  
– Laserliner –  
Möhnestraße 149  
59755 Arnsberg

020.907.01GB Rev.01.2011

UMAREX GmbH & Co. KG  
– Laserliner –  
Donnerfeld 2  
59757 Arnsberg, Germany  
Telefon +49 2932 638-300  
Fax +49 2932 638-333  
laserliner@umarex.de  
www.laserliner.com

Valid as of 01.01.2011. Subject to our General Terms and Conditions of Sale and Delivery.

Articles marked with (1) are only available as long as stocks last (discontinued lines). Subject to changes in colour and design and technical improvements. All information without liability on our part.

Photo archives: istockphoto · fotolia · polylooks