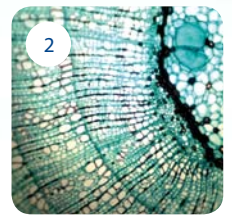
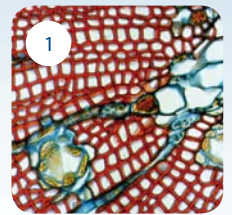


DinoEye eyepiece cameras HR 5 megapixel



- 1 Cell structure viewed with eyepiece camera
- 2 Tilia stem viewed with eyepiece camera

HIGH RESOLUTION EYEPIECE CAMERA'S

AM7023

USB 2.0

5 MEGAPIXEL
2592 x 1944

MEASUREMENT
FUNCTIONALITY

FITS 23 mm
OCULARS

AM7023B

USB 2.0

5 MEGAPIXEL
2592 x 1944

MEASUREMENT
FUNCTIONALITY

FITS 30 & 30,5 mm
OCULARS

AM7023CT

USB 2.0

5 MEGAPIXEL
2592 x 1944

MEASUREMENT
FUNCTIONALITY

CONNECTS
TO C-MOUNT

Can be mounted on an endoscope when combined with a C-Mount coupler

ACCESSORY



The C-mount coupler is used to connect a DinoEye eyepiece camera to an endoscopic camera. The C-mount adapter has a standard 25mm diameter male thread.

For proper measurement results, it is recommended to always perform a calibration.