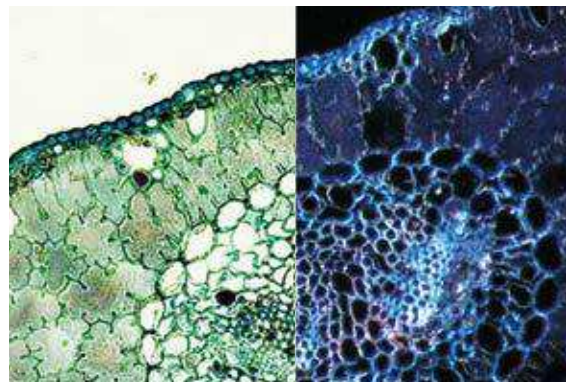


# HIGHLIGHTED PRODUCT More information on: [www.dino-lite.eu/bl-cdw](http://www.dino-lite.eu/bl-cdw)

## BL-CDW, DARK FIELD / BRIGHT FIELD BACKLIGHT

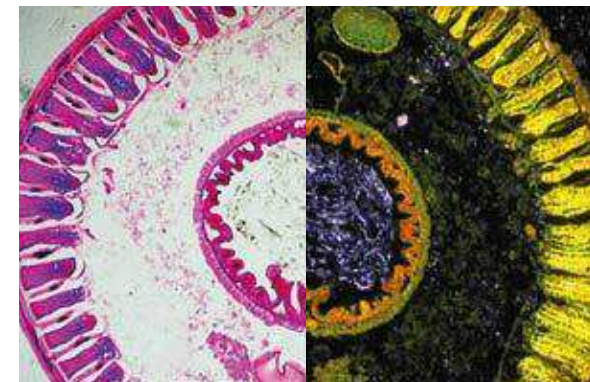
The Dino-Lite backlight stage BL-CDW allows two different types of lighting: brightfield and darkfield. In the brightfield mode, the light is transmitted from below the sample that shows up vividly showing the form and structure of the specimen on a bright background.

With darkfield illumination, the transmitted light will not reach the microscope and will therefore not be part of the image. The image will show bright objects on an almost black background. This type of light is not only suitable for prepared specimen but also for live specimen such as flagellum, the pseudopod movement, spirochete and more. Both types of illumination allow for high contrast, clear images and adds a whole new dimension to the Dino-Lite digital handheld microscopes with magnifications over 100x.



Bright field

Dark field



Bright field

Dark field

# DINO-LITE ACCESSORIES LIGHT & CONTROL

More information on: [www.dino-lite.eu/lightcontrol](http://www.dino-lite.eu/lightcontrol)



## BL-CDW

Brightfield/Darkfield Backlight Illuminator. The Dino-Lite backlight stage BL-CDW allows two different types of lighting: brightfield and darkfield.



## SW-F1

Foot pedal accessory allowing you to take a picture with your foot. No additional software is required, simply plug in the device into your USB port and it is ready to use.



## SL-ZW1

Polarized USB powered gooseneck light with adjustable polarization.



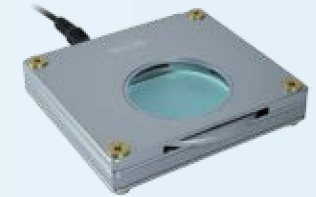
## N3C-R

The N3C-R is a passive ring light solution that helps to reveal more details by generating shadow-less illumination



## KM01

The KM-01 can be used to control the Dino-Lite focus wheel without touching the device. This is especially useful when the Dino-Lite needs to be isolated during use.



## BL-ZW1

USB or DC powered backlight with a built in, freely rotatable polarizer.