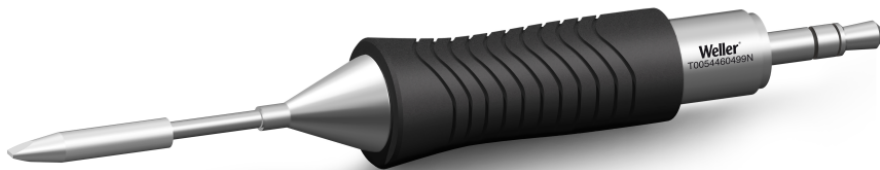


# RTM 015 S

Product no.: T0054460499N



## Benefits

- › Widest range of geometrics and sizes: Covers all standard applications. One tool meets all operational needs.
- › Active tip technology: Fastest heat-up and recovery time, sensor close to the solder tip, excellent heat transfer. No downtime, continuing workflow, excellent results
- › Digital tool for data storage: Motion activated usage sensor for energy control and data storage
- › Patented tip & grip design: Only soldering tip on the market which can be changed without a tool. 20% faster change than leading competitors.
- › One intelligent platform: One station for all active tips & tools. WX platform meets all operational hand soldering needs.

**Technical Data**

Tip shape	Chisel shape
Tip type	---
Width in mm	1.5
Width in inches	0.059
Thickness in mm	0.4
Thickness in inches	10.16
Length mm	19
Length inches	0.748
Power	40 W
Packaging unit	1