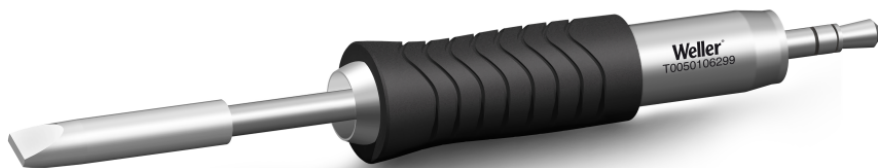


# RTU 050 S MS

Product no.: T0050106299



## Benefits

- › Patented Thermal Core Technology: Optimized thermal heat transfer to the solder joint. Consistent soldering for reduced rework.
- › MIL-SPC / IPC standard: Reduces risk of damage to sensitive components and workpieces. No rework, lower total cost of ownership
- › Active tip technology: Fastest heat-up and recovery time, sensor close to the solder tip, excellent heat transfer. No downtime, continuing workflow, excellent results
- › Digital tool for data storage: Motion activated usage sensor for energy control and data storage
- › Patented tip & grip design: Only soldering tip on the market which can be changed without a tool. 20% faster change than leading competitors.
- › One intelligent platform: One station for all active tips & tools. WX platform meets all operational hand soldering needs.

**Technical Data**

Tip shape	Chisel shape
Tip type	MS
Width in mm	5
Width in inches	0.197
Thickness in mm	1.2
Thickness in inches	0.047
Length mm	27.5
Length inches	1.083
Power	150 W
Packaging unit	1