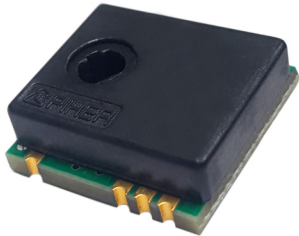


# MTS-360

## Miniature Hall-Effect Through-Shaft Rotary Position Sensor



### DESCRIPTION

The MTS-360 provides a true breakthrough in contactless sensor technology by combining a through-shaft design with 360° absolute position feedback in an ultra miniature size. The result is the smallest fully featured rotary sensor on the market with reliability up to 50 million cycles.

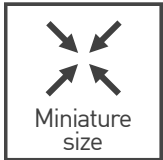
With its tiny size, engineers can now integrate a fully featured rotary sensor directly on their PCB without the packaging issues that typically accompany encoders or other absolute position devices. The exceptionally low profile fits easily in places that were previously too small for pre-packaged rotary sensors.

### KEY FEATURES



#### True, contactless operation

Without any gears or mechanical interfaces the sensor is easily assembled and calibrated and subject to limited wear and tear over lifetime.



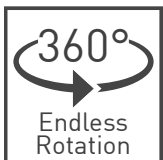
#### Fits in the smallest of spaces

With a footprint of less than 18 x 18mm, height of 5.9mm and less than 3g this rotary sensor can be used in even the most space-constraint application.



#### Through-hole design

Allows shaft insertion from top or bottom, simple assembly and makes it even more suitable in applications where space is limited.



#### 360 degree absolute position feedback

Endless mechanical rotational angle without dead band, keeps the position on power loss with programmable electrical angles from 15 to 360 degrees.



#### Durable and robust design

The non-contacting design allows for an extra-long product lifetime of up to 50 million cycles.



#### Adaptable to your requirements

Programmable transfer function and switch outputs as well as different output protocols and redundancy levels available.

### APPLICATIONS

#### Industrial

- ▶ Optical image stabilization
- ▶ Precision biomedical devices
- ▶ Instrumentation
- ▶ Autonomous warehouse robotics
- ▶ Robotics and automation feedback

#### Home and Building Automation

- ▶ HVAC systems

#### Transportation

- ▶ Valve monitoring
- ▶ Conveyor operation

#### HVOR

- ▶ Autonomous steering
- ▶ Joystick controls
- ▶ Hand throttle position

# MTS-360

## Miniature Hall-Effect Through-Shaft Rotary Position Sensor

### MECHANICAL SPECIFICATIONS

Rotational life	Up to 50.000.000 cycles
Mechanical range	360° (endless rotation)

### ELECTRICAL SPECIFICATIONS

Linearity <sup>1,2</sup>	±1% absolute (±0.5% upon request)
Electrical angular range <sup>1</sup>	Programmable from 15° to 360°
Output protocols	Analog (Ratiometric), PWM Serial Protocol (SPI)
Output	Simple Redundant Full-redundant (on request)
Switch output	Yes, programmable
Switch accuracy <sup>1</sup>	±3°
Resolution	Analog, PWM SPI Up to 12 bit Up to 14 bit
Supply voltage <sup>1</sup>	5V ±10%
Supply current	Single version Redundant version Typ 8.5 mA Typ 17 mA
Voltage protection	+20V / -10V
Self-diagnostic features	yes

<sup>1</sup> Other specifications available

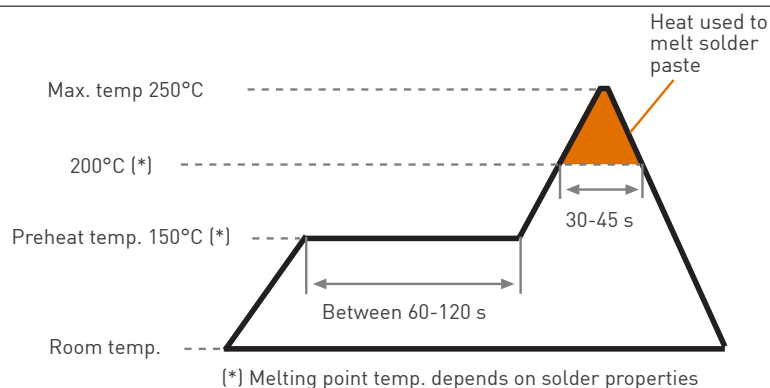
<sup>2</sup> Ferromagnetic materials close to the sensor (i.e. mounting surface) may affect the sensor's linearity.

### ENVIRONMENTAL SPECIFICATIONS

Operating and storage temperature <sup>1</sup>	-40° to +125°C
Shock	50g
Vibration	5-2000 Hz; 20g; Amax 0,75 mm
Sealing <sup>1</sup>	IP50

<sup>1</sup> Other specifications available

### RECOMMENDED REFLOW PROFILE



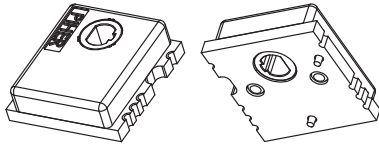
The recommended reflow profile is provided as a guideline. Optimal profile may differ due to oven type, assembly layout or other design or process variables. Customers should verify actual device performance in their specific application and reflow process. Please contact Piher if you require additional support.

# MTS-360

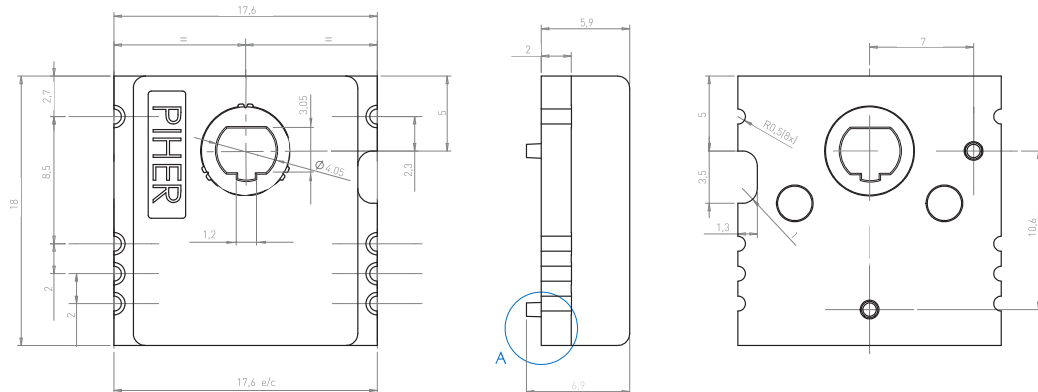
## Miniature Hall-Effect Through-Shaft Rotary Position Sensor

### DIMENSIONS (MM)

#### Outer Dimensions

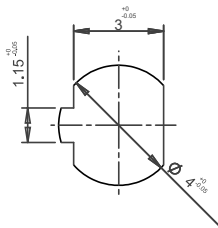


Download the STEP file here:  
<https://piher.net/piher/?p=1700>



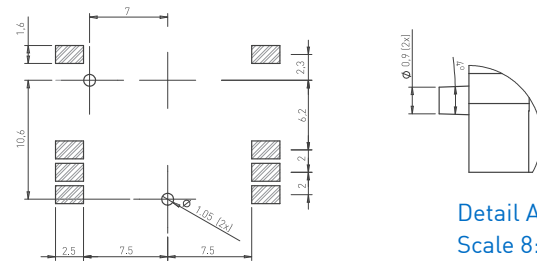
Rotor is shown at zero position. Sensor is delivered at random position

#### Recommended shaft dimensions



Shaft should be ferromagnetic material. If you want to use a non-ferromagnetic shaft please contact Piher.

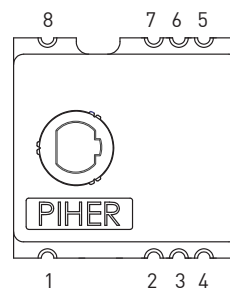
#### Recommended footprint



Detail A  
Scale 8:1

### CONNECTION SCHEME

PIN	Simple Output	Redundant Output
1	Supply voltage	Switch output2*
2		Signal output2**
3	Switch output*	Ground
4		Ground
5	Signal output**	Power supply
6		Power supply
7	Ground	Signal output1**
8		Switch output1*



\* If the feature is not used in the application, please connect to ground.

\*\* Piher can supply the recommended wiring diagram.

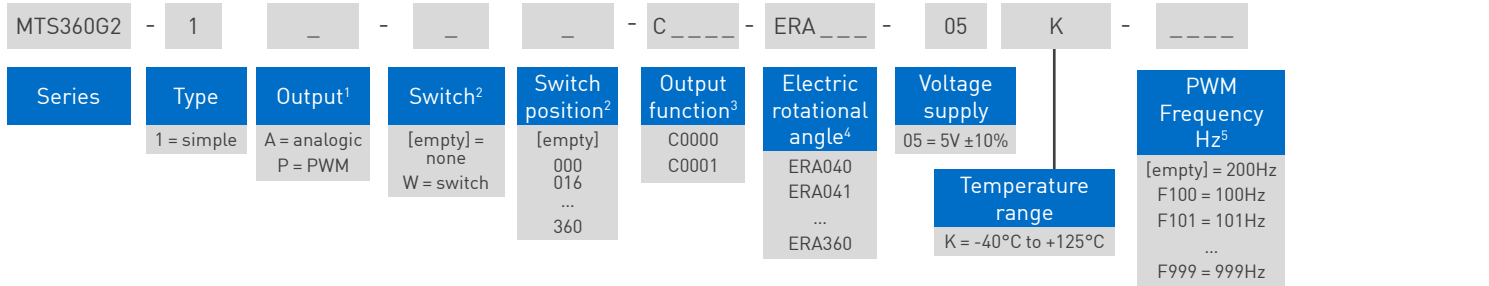
More instructions of use on [www.piher.net](http://www.piher.net)

# MTS-360

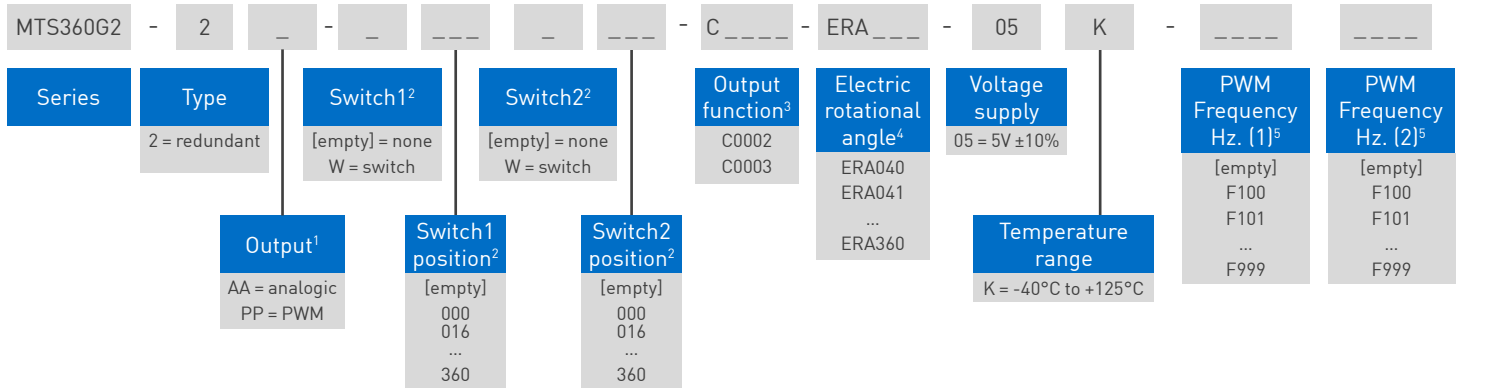
## Miniature Hall-Effect Through-Shaft Rotary Position Sensor

### HOW TO ORDER (Example: MTS360G2-1A-C0000-ERA360-05K)

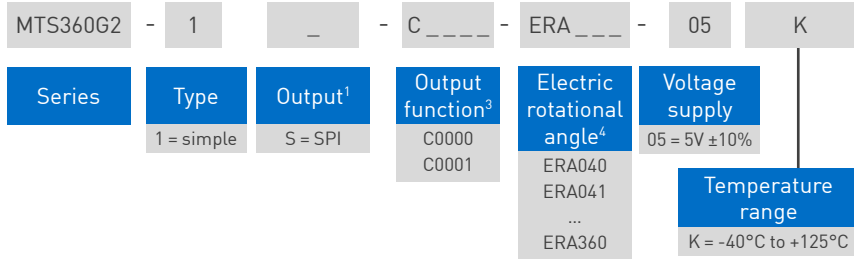
#### Simple Output - Analog and PWM



#### Redundant output - Analog and PWM

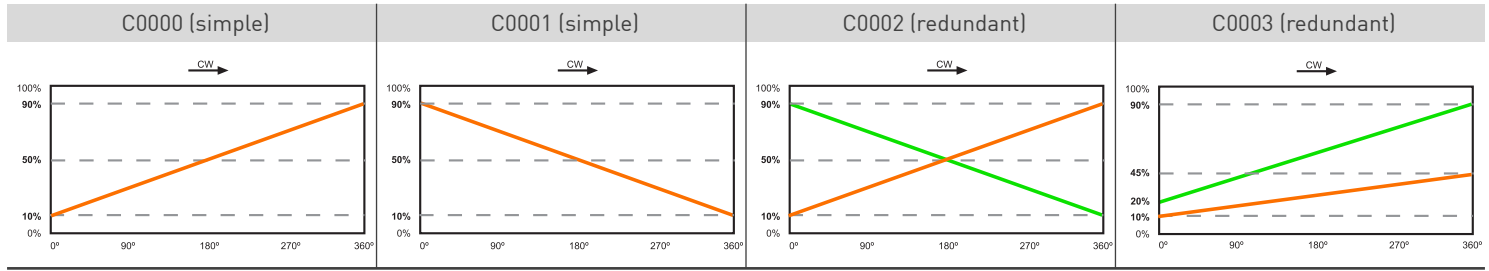


#### Simple output - SPI



1 The analog output is ratiometric, proportional to input supply voltage.  
 2 Leave empty if not applicable. Switch function diagram: see next page.  
 3 Other output functions available, please check availability. Enter CXXXX as long as the new output function is not defined.  
 4 Models with ERA < 40° available on request  
 5 Leave empty if not applicable. Default frequency is 200 Hz

### EXAMPLE OUTPUT FUNCTIONS



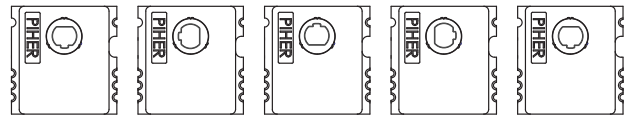
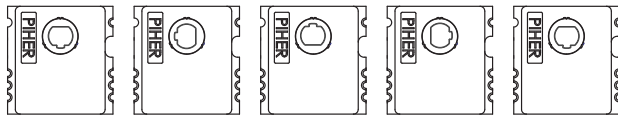
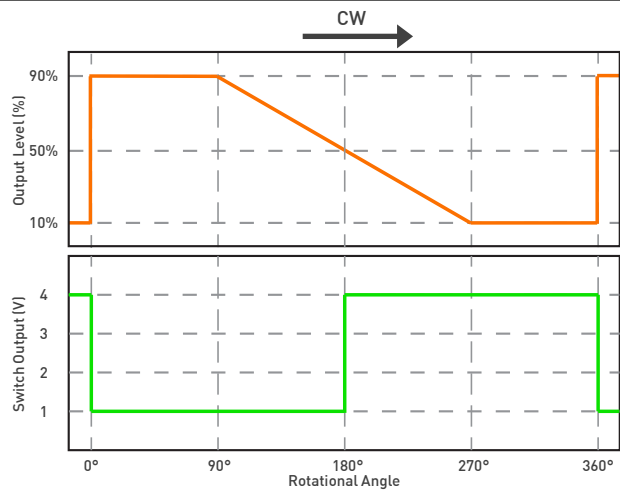
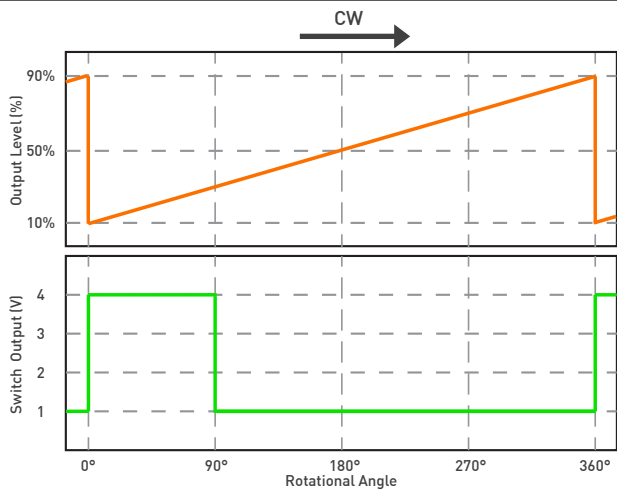
# MTS-360

## Miniature Hall-Effect Through-Shaft Rotary Position Sensor

### OUTPUT VOLTAGE DEPENDING ON SHAFT POSITION

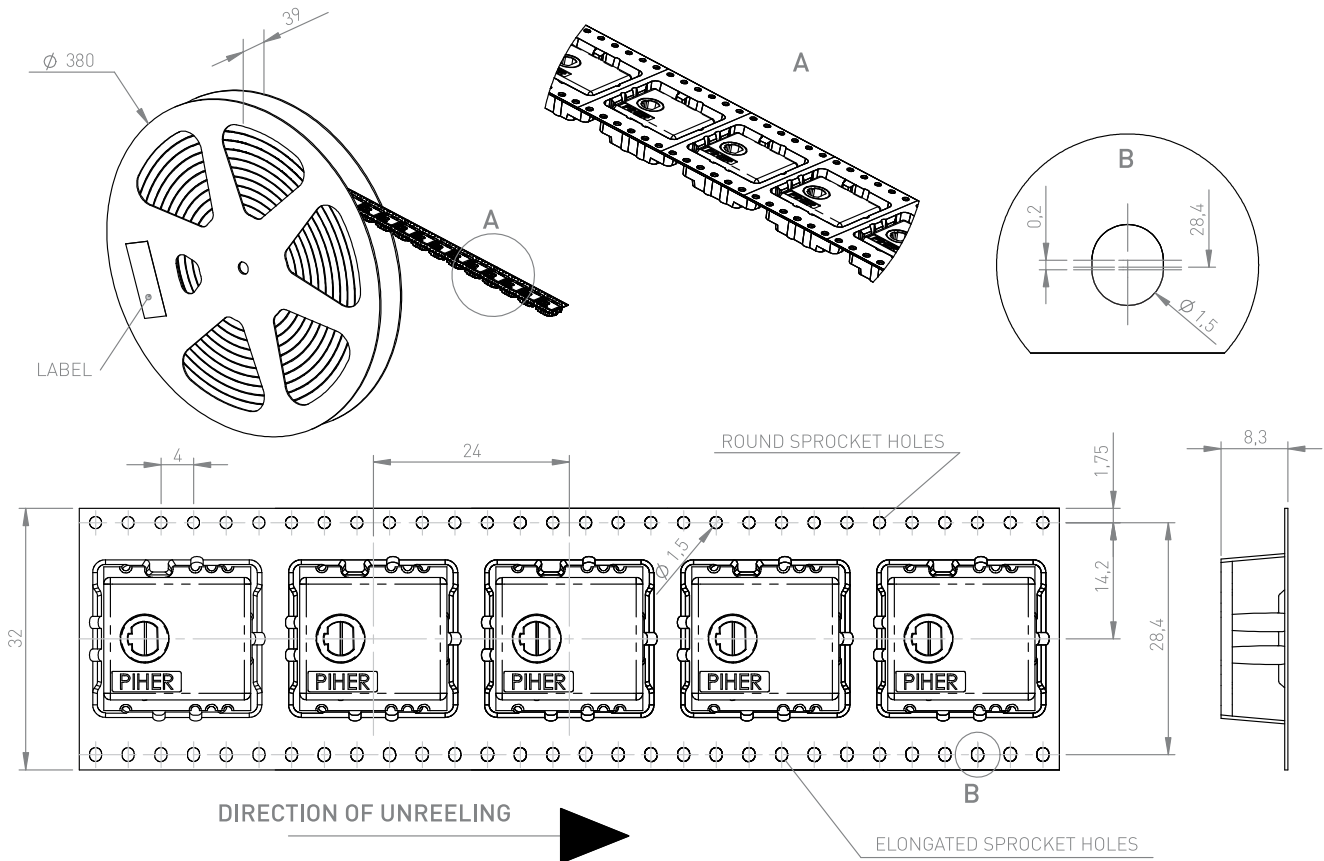
MTS360G2-1A-W090-C0000-ERA360-05K

MTS360G2-1A-W180-C0072-ERA180-05K



### PACKAGING

Embossed Tape (400 pcs / reel)



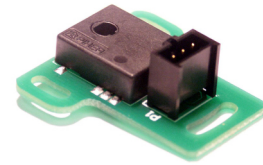
For more information visit: [www.pihernet](http://www.pihernet)

# MTS-360

## Miniature Hall-Effect Through-Shaft Position Sensor

### FOR MORE OPTIONAL FEATURES CONTACT PIHER SENSING SYSTEMS

- ▶ Special output slopes and protocols
- ▶ Full redundant version with switches
- ▶ Fast versions
- ▶ Connectors (see MTS-360PCB)
- ▶ IP sealing
- ▶ Shaft interfaces



Sensor + PCB + connector combination

### OUR ADVANTAGE

- ▶ Leading-edge innovative position sensing solutions
  - ▷ Contactless (Hall-effect and Inductive Technology)
  - ▷ Contacting (Potentiometers, Printed Electronics)
- ▶ Engineering design-in support
- ▶ All our products can be customized to fit target application and customer requirement
- ▶ Capability to move seamlessly from development to true high-volume production
- ▶ A global footprint with global engineering and commercial support
- ▶ One-stop shop not limited to position sensors (temperature, pressure, gas,...) through group collaboration
- ▶ Flexibility and entrepreneurship of a medium-sized company with the backing of Amphenol Corporation



Please always use the latest updated datasheets and 3D models published on our website.

#### Disclaimer:

The product information in this catalog is for reference purposes. Please consult for the most up to date and accurate design information. Piher Sensors & Controls S.A., its affiliates, agents, and employees, and all persons acting on its or their behalf (collectively, "Piher"), disclaim any and all liability for any errors, inaccuracies or incompleteness contained herein or in any other disclosure relating to any product described herein. Piher disclaims any and all liability arising out of the use or application of any product described herein or of any information provided herein to the maximum extent permitted by law. The product specifications do not expand or otherwise modify Piher's terms and conditions of sale, including but not limited to the warranty expressed therein, which apply to these products. No license, express or implied, by estoppel or otherwise, to any intellectual property rights is granted by this document or by any conduct of Piher. The products shown herein are not designed for use in medical, life-saving, or life-sustaining applications unless otherwise expressly indicated. Customers using or selling Piher products not expressly indicated for use in such applications do so entirely at their own risk and agree to fully indemnify Piher for any damages arising or resulting from such use or sale. Please contact authorized Piher personnel to obtain written terms and conditions regarding products designed for such applications. Product names and markings noted herein may be trademarks of their respective owners. Information contained in and/or attached to this catalogue may be subject to export control regulations of the European Community, USA, or other countries. Each recipient of this document is responsible to ensure that usage and/or transfer of any information contained in this document complies with all relevant export control regulations. If you are in any doubt about the export control restrictions that apply to this information, please contact the sender immediately. For any Piher Exports, Note: All products / technologies are EAR99 Classified commodities. Exports from the United States are in accordance with the Export Administration Regulations. Diversion contrary to US law is prohibited.

### CONTACT

**Piher Sensing Systems**  
Polígono Industrial Municipal  
Vial T2, Nº22  
31500 Tudela  
Spain

[sales@piher.net](mailto:sales@piher.net)

Europe: +34 948 820 450  
Americas: +1 636 251 0855  
Asia Pacific: +65 9641 8886  
India: +91 9538 686 586

Rev-2611 2021 © 2021 Piher Sensors & Controls S.A.