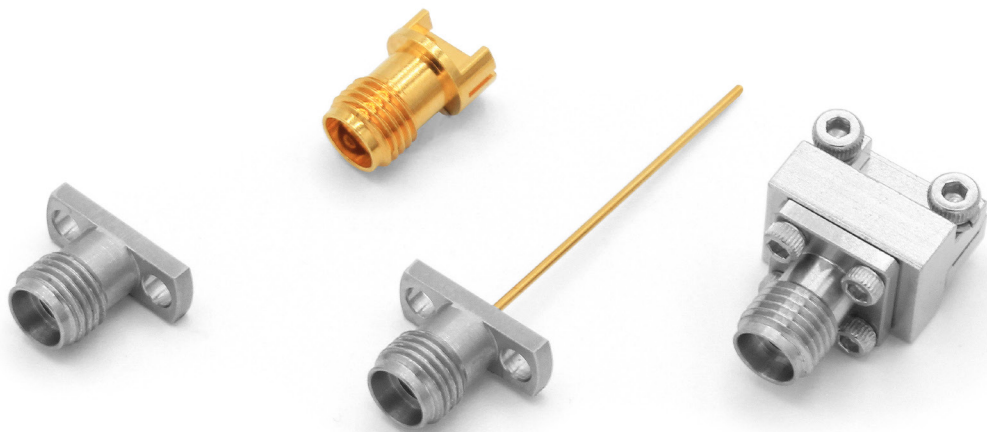


The 2.92mm (K) connector range operate mode-free up to 40GHz and are ideal for high-frequency module and T&M applications. These connectors are also known as K connector, K Type, SMK adapter.

Bulgin's High-quality 2.92mm connectors are constructed with beryllium copper contacts, brass or stainless-steel bodies. These connectors have a thicker wall than a standard SMA and also mate with the SMA and 3.50mm connector offerings.



Key Features:

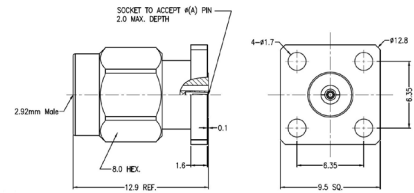
- 50-ohm Impedance
- Insulation resistance >5000MΩ
- Durability >500 Cycles
- Available in Male and Female Threads
- Available in Plug or Jack
- Beryllium Copper Contact Pin
- Body Material available in Stainless Steel Passivation and Brass

2.92mm Series Socket 4 Hole Flange



RF292A4PAAE

- ⊕ Max Voltage 250V
- ⊕ Operating Temperature -40C to +85C
- ⊕ Frequency Range 0-40GHz
- ⊕ VSWR <1.30
- ⊕ Dielectric withstanding Voltage >750V
- ⊕ Available with Extended PTFE



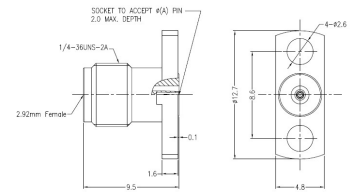
| Part Number | Plug or Jack | Flange Mount Length | Mount Hole Distance | Socket Diameter |
|-------------|--------------|---------------------|---------------------|-----------------|
| RF292A4JCCA | Jack | 12.70mm | 8.60mm | 0.23mm |
| RF292A4JCCB | Jack | 12.70mm | 8.60mm | 0.30mm |
| RF292A4JCCC | Jack | 12.70mm | 8.60mm | 0.38mm |
| RF292A4JCCE | Jack | 12.70mm | 8.60mm | 0.51mm |
| RF292A4JAAA | Jack | 9.50mm | 6.35mm | 0.23mm |
| RF292A4JAAB | Jack | 9.50mm | 6.35mm | 0.30mm |
| RF292A4JAAC | Jack | 9.50mm | 6.35mm | 0.38mm |
| RF292A4JAAE | Jack | 9.50mm | 6.35mm | 0.51mm |
| RF292A4PCCA | Plug | 12.70mm | 8.60mm | 0.23mm |
| RF292A4PCCB | Plug | 12.70mm | 8.60mm | 0.30mm |
| RF292A4PCCC | Plug | 12.70mm | 8.60mm | 0.38mm |
| RF292A4PCCE | Plug | 12.70mm | 8.60mm | 0.51mm |
| RF292A4PAAA | Plug | 9.50mm | 6.35mm | 0.23mm |
| RF292A4PAAB | Plug | 9.50mm | 6.35mm | 0.30mm |
| RF292A4PAAC | Plug | 9.50mm | 6.35mm | 0.38mm |
| RF292A4PAAE | Plug | 9.50mm | 6.35mm | 0.51mm |

2.92mm Series Socket 2 Hole Flange



RF292A2JCCA

- ⊕ Max Voltage 250V
- ⊕ Operating Temperature -40C to +85C
- ⊕ Frequency Range 0-40GHz
- ⊕ VSWR <1.30
- ⊕ Dielectric withstanding Voltage >750V
- ⊕ Available with Extended PTFE



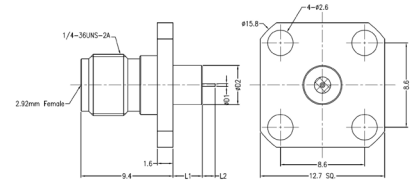
| Part Number | Plug or Jack | Flange Mount Length | Mount Hole Distance | Socket Diameter |
|-------------|--------------|---------------------|---------------------|-----------------|
| RF292A2JEGA | Jack | 15.80mm | 12.20mm | 0.23mm |
| RF292A2JEGB | Jack | 15.80mm | 12.20mm | 0.30mm |
| RF292A2JEGC | Jack | 15.80mm | 12.20mm | 0.38mm |
| RF292A2JEGE | Jack | 15.80mm | 12.20mm | 0.51mm |
| RF292A2JCCA | Jack | 12.70mm | 8.60mm | 0.23mm |
| RF292A2JCCB | Jack | 12.70mm | 8.60mm | 0.30mm |
| RF292A2JCCC | Jack | 12.70mm | 8.60mm | 0.38mm |
| RF292A2JCCE | Jack | 12.70mm | 8.60mm | 0.51mm |
| RF292A2JDFA | Jack | 14.00mm | 10.20mm | 0.23mm |
| RF292A2JDFB | Jack | 14.00mm | 10.20mm | 0.30mm |
| RF292A2JDFC | Jack | 14.00mm | 10.20mm | 0.38mm |
| RF292A2JDFE | Jack | 14.00mm | 10.20mm | 0.51mm |
| RF292A2PEGA | Plug | 15.80mm | 12.20mm | 0.23mm |
| RF292A2PEGB | Plug | 15.80mm | 12.20mm | 0.30mm |
| RF292A2PEGC | Plug | 15.80mm | 12.20mm | 0.38mm |
| RF292A2PEGE | Plug | 15.80mm | 12.20mm | 0.51mm |
| RF292A2PCEA | Plug | 12.70mm | 8.90mm | 0.23mm |
| RF292A2PCEB | Plug | 12.70mm | 8.90mm | 0.30mm |
| RF292A2PCEC | Plug | 12.70mm | 8.90mm | 0.38mm |
| RF292A2PCEE | Plug | 12.70mm | 8.90mm | 0.51mm |

2.92mm Series Pin with Extended PTFE 4 Hole Flange



RF292A2JCCADGA

- Max Voltage 250V
- Operating Temperature -40C to +85C
- Frequency Range 0-40GHz
- VSWR <1.30
- Dielectric withstanding Voltage >750V
- Available with Extended PTFE
- Flange Mount Length 12.70mm
- Mount Hole Distance 8.60mm



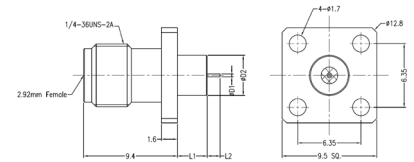
| Part Number | Plug or Jack | Pin Diameter | Pin Length | Extended PTFE Dia | Extended PTFE Length |
|----------------|--------------|--------------|------------|-------------------|----------------------|
| RF292A4JCCADGA | Jack | 0.30mm | 1.50mm | 4.00mm | 1.40mm |
| RF292A4JCCADGB | Jack | 0.30mm | 1.50mm | 4.00mm | 3.00mm |
| RF292A4JCCCGH | Jack | 0.60mm | 1.27mm | 4.00mm | 10.10mm |
| RF292A4JCCADAA | Jack | 0.30mm | 1.50mm | 1.67mm | 1.40mm |
| RF292A4JCCADAB | Jack | 0.30mm | 1.50mm | 1.67mm | 3.00mm |

2.92mm Series Pin with Extended PTFE 4 Hole Flange



RF292A2JAAADGA

- Max Voltage 250V
- Operating Temperature -40C to +85C
- Frequency Range 0-40GHz
- VSWR <1.30
- Dielectric withstanding Voltage >750V
- Available with Extended PTFE
- Flange Mount Length 9.50mm
- Mount Hole Distance 6.35 mm



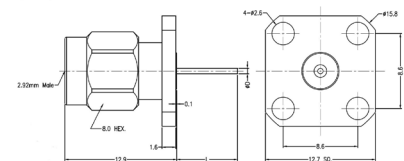
| Part Number | Plug or Jack | Pin Diameter | Pin Length | Extended PTFE Dia | Extended PTFE Length |
|----------------|--------------|--------------|------------|-------------------|----------------------|
| RF292A4JAAADGA | Jack | 0.30mm | 1.50mm | 4.00mm | 1.40mm |
| RF292A4JAAADGB | Jack | 0.30mm | 1.50mm | 4.00mm | 3.00mm |
| RF292A4JAAACGH | Jack | 0.60mm | 1.27mm | 4.00mm | 10.10mm |
| RF292A4JAAADAA | Jack | 0.30mm | 1.50mm | 1.67mm | 1.40mm |
| RF292A4JAAADAB | Jack | 0.30mm | 1.50mm | 1.67mm | 3.00mm |

2.92mm Series Pin without Extended PTFE 4 Hole Flange



RF292A4PCCDK

- Max Voltage 250V
- Operating Temperature -40C to +85C
- Frequency Range 0-40GHz
- VSWR <1.30
- Dielectric withstanding Voltage >750V
- Available with Extended PTFE



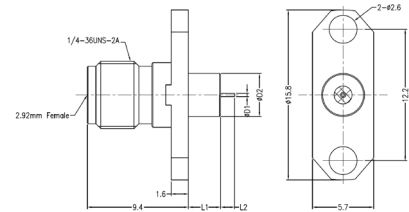
| Part Number | Plug or Jack | Flange Mount Length | Pin Diameter | Pin Length |
|--------------|--------------|---------------------|--------------|------------|
| RF292A4JCCAL | Jack | 12.70mm | 0.30mm | 7.00mm |
| RF292A4JCCDK | Jack | 12.70mm | 0.64mm | 6.84mm |
| RF292A4JCCDP | Jack | 12.70mm | 0.64mm | 10.92mm |
| RF292A4JCCES | Jack | 12.70mm | 0.75mm | 30.00mm |
| RF292A4JAAAL | Jack | 9.50mm | 0.30mm | 7.00mm |
| RF292A4JAADK | Jack | 9.50mm | 0.64mm | 6.84mm |
| RF292A4JAADP | Jack | 9.50mm | 0.64mm | 10.92mm |
| RF292A4JAAES | Jack | 9.50mm | 0.75mm | 30.00mm |
| RF292A4PCCDK | Plug | 12.70mm | 0.64mm | 6.84mm |
| RF292A4PCCDP | Plug | 12.70mm | 0.64mm | 10.92mm |
| RF292A4PAADK | Plug | 9.50mm | 0.64mm | 6.84mm |
| RF292A4PAADP | Plug | 9.50mm | 0.64mm | 10.92mm |

2.92mm Series Pin with Extended PTFE 2 Hole Flange



RF292A2JEGADGA

- ⊕ Max Voltage 250V
- ⊕ Operating Temperature -40C to +85C
- ⊕ Frequency Range 0-40GHz
- ⊕ VSWR <1.30
- ⊕ Dielectric withstanding Voltage >750V
- ⊕ Available with Extended PTFE
- ⊕ Flange Mount Length 15.80mm
- ⊕ Mount Hole Distance 12.20mm



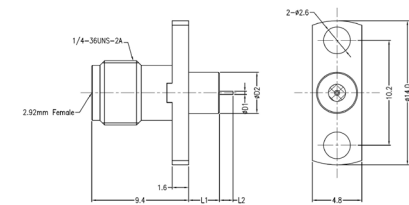
| Part Number | Plug or Jack | Pin Diameter | Pin Length | Extended PTFE Dia | Extended PTFE Length |
|----------------|--------------|--------------|------------|-------------------|----------------------|
| RF292A2JEGADGA | Jack | 0.30mm | 1.50mm | 4.00mm | 1.40mm |
| RF292A2JEGADGB | Jack | 0.30mm | 1.50mm | 4.00mm | 3.00mm |
| RF292A2JEGCCGH | Jack | 0.60mm | 1.27mm | 4.00mm | 10.10mm |
| RF292A2JEGADAA | Jack | 0.30mm | 1.50mm | 1.67mm | 1.40mm |
| RF292A2JEGADAB | Jack | 0.30mm | 1.50mm | 1.67mm | 3.00mm |

2.92mm Series Pin with Extended PTFE 2 Hole Flange



RF292A2JDFADGA

- ⊕ Max Voltage 250V
- ⊕ Operating Temperature -40C to +85C
- ⊕ Frequency Range 0-40GHz
- ⊕ VSWR <1.30
- ⊕ Dielectric withstanding Voltage >750V
- ⊕ Available with Extended PTFE
- ⊕ Flange Mount Length 14.00mm
- ⊕ Mount Hole Distance 10.20mm



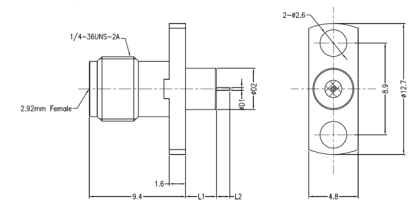
| Part Number | Plug or Jack | Pin Diameter | Pin Length | Extended PTFE Dia | Extended PTFE Length |
|----------------|--------------|--------------|------------|-------------------|----------------------|
| RF292A2JDFADGA | Jack | 0.30mm | 1.50mm | 4.00mm | 1.40mm |
| RF292A2JDFADGB | Jack | 0.30mm | 1.50mm | 4.00mm | 3.00mm |
| RF292A2JDFCCGH | Jack | 0.60mm | 1.27mm | 4.00mm | 10.10mm |
| RF292A2JDFADAA | Jack | 0.30mm | 1.50mm | 1.67mm | 1.40mm |
| RF292A2JDFADAB | Jack | 0.30mm | 1.50mm | 1.67mm | 3.00mm |

2.92mm Series Pin with Extended PTFE 2 Hole Flange



RF292A2JCEADGA

- ⊕ Max Voltage 250V
- ⊕ Operating Temperature -40C to +85C
- ⊕ Frequency Range 0-40GHz
- ⊕ VSWR <1.30
- ⊕ Dielectric withstanding Voltage >750V
- ⊕ Available with Extended PTFE
- ⊕ Flange Mount Length 12.70mm
- ⊕ Mount Hole Distance 8.90mm



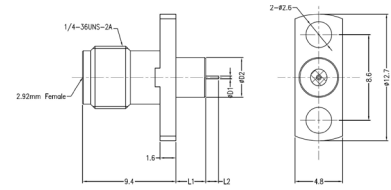
| Part Number | Plug or Jack | Pin Diameter | Pin Length | Extended PTFE Dia | Extended PTFE Length |
|----------------|--------------|--------------|------------|-------------------|----------------------|
| RF292A2JCEADGA | Jack | 0.30mm | 1.50mm | 4.00mm | 1.40mm |
| RF292A2JCEADGB | Jack | 0.30mm | 1.50mm | 4.00mm | 3.00mm |
| RF292A2JCECCGH | Jack | 0.60mm | 1.27mm | 4.00mm | 10.10mm |
| RF292A2JCEADAA | Jack | 0.30mm | 1.50mm | 1.67mm | 1.40mm |
| RF292A2JCEADAB | Jack | 0.30mm | 1.50mm | 1.67mm | 3.00mm |

2.92mm Series Pin with Extended PTFE 2 Hole Flange



RF292A2JCCADGA

- ⊕ Max Voltage 250V
- ⊕ Operating Temperature -40C to +85C
- ⊕ Frequency Range 0-40GHz
- ⊕ VSWR <1.30
- ⊕ Dielectric withstanding Voltage >750V
- ⊕ Available with Extended PTFE
- ⊕ Flange Mount Length 12.70mm
- ⊕ Mount Hole Distance 8.60mm



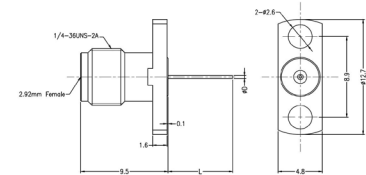
| Part Number | Plug or Jack | Pin Diameter | Pin Length | Extended PTFE Dia | Extended PTFE Length |
|----------------|--------------|--------------|------------|-------------------|----------------------|
| RF292A2JCCADGA | Jack | 0.30mm | 1.50mm | 4.00mm | 1.40mm |
| RF292A2JCCADGB | Jack | 0.30mm | 1.50mm | 4.00mm | 3.00mm |
| RF292A2JCCCGH | Jack | 0.60mm | 1.27mm | 4.00mm | 10.10mm |
| RF292A2JCCADAA | Jack | 0.30mm | 1.50mm | 1.67mm | 1.40mm |
| RF292A2JCCADAB | Jack | 0.30mm | 1.50mm | 1.67mm | 3.00mm |

2.92mm Series Pin without Extended PTFE 2 Hole Flange



RF292A2JEGAL

- ⊕ Max Voltage 250V
- ⊕ Operating Temperature -40C to +85C
- ⊕ Frequency Range 0-40GHz
- ⊕ VSWR <1.30
- ⊕ Dielectric withstanding Voltage >750V
- ⊕ Available with Extended PTFE



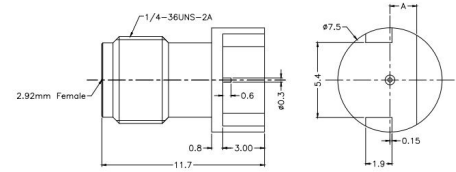
| Part Number | Plug or Jack | Flange Mount Length | Mount Hole Distance | Pin Diameter | Pin Length |
|--------------|--------------|---------------------|---------------------|--------------|------------|
| RF292A2JEGAL | Jack | 15.80mm | 12.20mm | 0.30mm | 7.00mm |
| RF292A2JEGDK | Jack | 15.80mm | 12.20mm | 0.64mm | 6.84mm |
| RF292A2JEGDP | Jack | 15.80mm | 12.20mm | 0.64mm | 10.92mm |
| RF292A2JEGES | Jack | 15.80mm | 12.20mm | 0.75mm | 30.00mm |
| RF292A2JCCAL | Jack | 12.70mm | 8.60mm | 0.30mm | 7.00mm |
| RF292A2JCCDK | Jack | 12.70mm | 8.60mm | 0.64mm | 6.84mm |
| RF292A2JCCDP | Jack | 12.70mm | 8.60mm | 0.64mm | 10.92mm |
| RF292A2JCCES | Jack | 12.70mm | 8.60mm | 0.75mm | 30.00mm |
| RF292A2JDFAL | Jack | 14.00mm | 10.20mm | 0.30mm | 7.00mm |
| RF292A2JDFDK | Jack | 14.00mm | 10.20mm | 0.64mm | 6.84mm |
| RF292A2JDFDP | Jack | 14.00mm | 10.20mm | 0.64mm | 10.92mm |
| RF292A2JDFES | Jack | 14.00mm | 10.20mm | 0.75mm | 30.00mm |
| RF292A2JCEAL | Jack | 12.70mm | 8.90mm | 0.30mm | 7.00mm |
| RF292A2JCEDK | Jack | 12.70mm | 8.90mm | 0.64mm | 6.84mm |
| RF292A2JCEDP | Jack | 12.70mm | 8.90mm | 0.64mm | 10.92mm |
| RF292A2JCEES | Jack | 12.70mm | 8.90mm | 0.75mm | 30.00mm |
| RF292A2PEGDK | Plug | 15.80mm | 12.20mm | 0.64mm | 6.84mm |
| RF292A2PEGDP | Plug | 15.80mm | 12.20mm | 0.64mm | 10.92mm |
| RF292A2PDFDK | Plug | 14.00mm | 10.20mm | 0.64mm | 6.84mm |
| RF292A2PDFDP | Plug | 14.00mm | 10.20mm | 0.64mm | 10.92mm |
| RF292A2PCEDK | Plug | 12.70mm | 8.90mm | 0.64mm | 6.84mm |
| RF292A2PCEDP | Plug | 12.70mm | 8.90mm | 0.64mm | 10.92mm |

2.92mm Series Edge Launch Connector



RF292CP

- Max Voltage 250V
- Operating Temperature -40C to +85C
- Frequency Range 0-40GHz
- VSWR <1.30
- Dielectric withstanding Voltage >750V
- Only available in Brass with Gold Plating



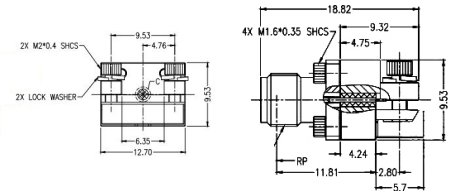
| Part Number | Plug or Jack | PCB Thickness |
|-------------|--------------|---------------|
| RF292CPA | Plug | 0.61mm |
| RF292CPB | Plug | 0.87mm |
| RF292CPC | Plug | 1.78mm |
| RF292CPD | Plug | 1.88mm |

2.92mm Series End Launch Connector



RF292EJ

- Max Voltage 250V
- Operating Temperature -55C to +125C
- Frequency Range 0-40GHz
- VSWR <1.50
- Dielectric withstanding Voltage >750V



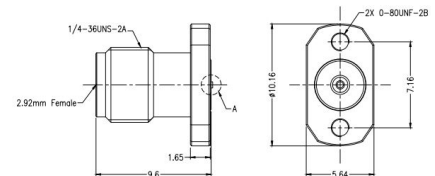
| Part Number | Plug or Jack |
|-------------|--------------|
| RF292EJ | Jack |
| RF292EP | Plug |

2.92mm Series Compression Mount Connector



RF292DJB

- Max Voltage 250V
- Operating Temperature -55C to +125C
- Frequency Range 0-40GHz
- VSWR <1.25
- Dielectric withstanding Voltage >750V



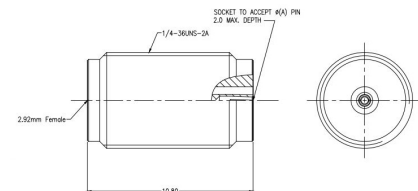
| Part Number | Plug or Jack | Stripline or Microstrip Line |
|-------------|--------------|------------------------------|
| RF292DJB | Jack | Stripline |
| RF292DJA | Jack | Microstrip Line |

2.92mm Series Straight Connector



RF292AJA

- Max Voltage 250V
- Operating Temperature -65C to +165C
- Frequency Range 0-40GHz
- VSWR <1.30
- Dielectric withstanding Voltage >750V



| Part Number | Plug or Jack | Flange Mount Length | STA 142, UFB, GORE, 1401 |
|-------------|--------------|---------------------|--------------------------|
| RF292AJA | Jack | 0.23mm | - |
| RF292AJB | Jack | 0.30mm | - |
| RF292AJC | Jack | 0.38mm | - |
| RF292AJE | Jack | 0.51mm | - |
| RF292APG | Plug | - | Yes |
| RF292AJG | Jack | - | Yes |

Electrical:

| | |
|----------------------------|-------------------|
| Insulation Resistance: | >5000M Ω m |
| Impedance: | 50 Ω m |
| Centre Contact Resistance: | <3.0m Ω ms |
| Outer Contact Resistance: | <2.0m Ω ms |

Mechanical:

| | |
|---------------------------|------------------|
| Centre Contact Retention: | >20N |
| Coupling Torque: | 0.80Nm to 1.10Nm |
| Coupling Torque RPC N: | 1.36Nm |
| Cycles: | >500 |

Material

| | |
|------------|---|
| Body: | Passivation of Stainless Steel, Brass with Gold plating |
| Contact: | Beryllium Copper |
| Insulator: | UNFILLED ULTEM 1000 |
| RoHS: | Compliant |