



Connectors > D-Shaped Connectors > D-Sub Connectors > PCB D-Sub Connectors



Connector & Housing Type: **Receptacle**

Connector System: **Cable-to-Board**

Number of Positions: **15**

Centerline (Pitch): **2.29 mm [.09 in]**

Number of Rows: **3**

Features

Product Type Features

Grounding Indents	Without
Grounding Straps	Without
Footprint	8.89 mm[.35 in]
Shell Type	Front Metal Shell
Connector & Housing Type	Receptacle
Connector System	Cable-to-Board
D-Sub Shell Size	1
Sealable	No
Connector & Contact Terminates To	Printed Circuit Board
Product Type	Connector

Configuration Features

Number of Positions	15
Number of Rows	3
PCB Mount Orientation	Right Angle
Preloaded	Yes

Body Features

Plastic	No
Insert Material	Copper Alloy
Connector Profile	Standard
Color	Blue

Shell Plating Material	Nickel
Shell Material	SPCC
Color Code	661C
Post Size	.5 mm[.02 in]

Contact Features

Contact Mating Area Plating Material	Gold Flash
Contact Underplating Material	Nickel
PCB Contact Termination Area Plating Material	Tin
Contact Base Material	Phosphor Bronze
Contact Shape & Form	Round
Contact Current Rating (Max)	5 A

Termination Features

Grounding Clips	Without
Termination Post Length	2.67 mm[.105 in]

Mechanical Attachment

Boardlock Hole Diameter	3.2 mm[.126 in]
Panel Mount Feature	Without
PCB Mount Retention	With
PCB Mount Retention Type	Boardlock
Mating Retention	With
Mating Retention Type	Female Screwlocks, 4-40 UNC
Connector Mounting Type	Board Mount
Boardlock Plating Material	Tin over Nickel
Mounting Hole Diameter	3.18 mm
Boardlock Material	Brass

Housing Features

Centerline (Pitch)	2.29 mm[.09 in]
Housing Material	Thermoplastic
Housing Color	Blue

Dimensions

Row-to-Row Spacing	1.98 mm[.078 in]
PCB Thickness (Recommended)	1.57 mm[.062 in]

Usage Conditions

Operating Temperature Range	-55 – 125 °C[-67 – 257 °F]
-----------------------------	----------------------------

Operation/Application

Circuit Application	Signal
---------------------	--------

Industry Standards

UL Flammability Rating	UL 94V-0
------------------------	----------

Packaging Features

Packaging Method	Box & Tray, Tray
------------------	------------------

Packaging Quantity	100
--------------------	-----

Product Compliance

[For compliance documentation, visit the product page on TE.com>](#)

EU RoHS Directive 2011/65/EU	Compliant with Exemptions
EU ELV Directive 2000/53/EC	Compliant with Exemptions
China RoHS 2 Directive MIIT Order No 32, 2016	Restricted Materials Above Threshold
EU REACH Regulation (EC) No. 1907/2006	Current ECHA Candidate List: JUNE 2022 (224) Candidate List Declared Against: JAN 2021 (211) SVHC > Threshold: Pb (4% in Component part) Article Safe Usage Statements: Do not eat, drink or smoke when using this product. Wash thoroughly after handling. Recycle if possible and dispose of the article by following all applicable governmental regulations relevant to your geographic location.
Halogen Content	Not Low Halogen - contains Br or Cl > 900 ppm.
Solder Process Capability	Wave solder capable to 265°C

Product Compliance Disclaimer

This information is provided based on reasonable inquiry of our suppliers and represents our current actual knowledge based on the information they provided. This information is subject to change. The part numbers that TE has identified as EU RoHS compliant have a maximum concentration of 0.1% by weight in homogenous materials for lead, hexavalent chromium, mercury, PBB, PBDE, DBP, BBP, DEHP, DIBP, and 0.01% for cadmium, or qualify for an exemption to these limits as defined in the Annexes of Directive 2011/65/EU (RoHS2). Finished electrical and electronic equipment products will be CE marked as required by Directive 2011/65/EU. Components may not be CE marked. Additionally, the part numbers that TE has identified as EU ELV compliant have a maximum concentration of 0.1% by weight in homogenous materials for lead, hexavalent chromium, and mercury, and 0.01% for cadmium, or qualify for an exemption to these limits as defined in the Annexes of Directive 2000/53/EC (ELV). Regarding the REACH Regulation, the information TE provides on SVHC in articles for this part number is based on the latest European Chemicals Agency (ECHA) 'Guidance on requirements for substances in articles' posted at this URL: <https://echa.europa.eu/guidance-documents/guidance-on-reach>

Also in the Series | RAYCHEM SEB



Bushings & Bobbins(5)

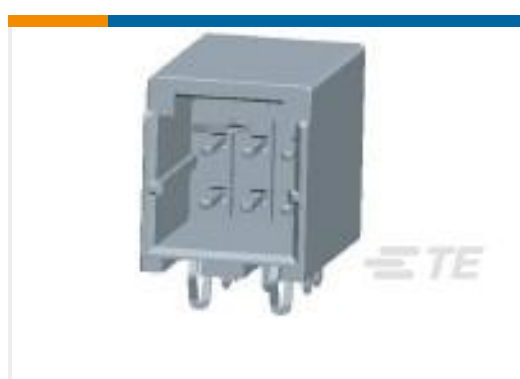


Cable Transitions & Breakouts(1)

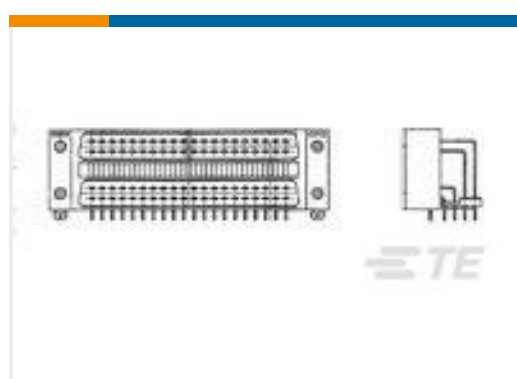
Customers Also Bought



TE Part #1-2349815-2
D3950 REC 8POSN. 1ROW X KEY
MARKED



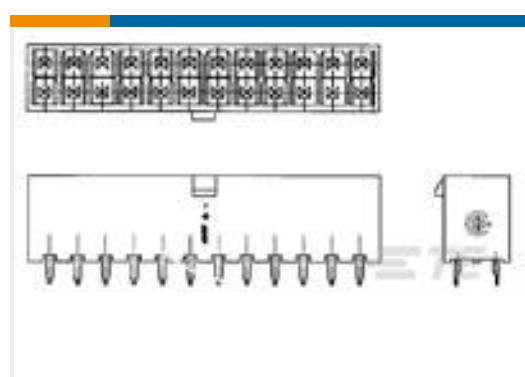
TE Part #1-1871673-3
DYNAMIC 1200D HDR ASSY H 6P
BLACK TIN



TE Part #900412-2
PC I/O RETENTION LEG ASSY 80P



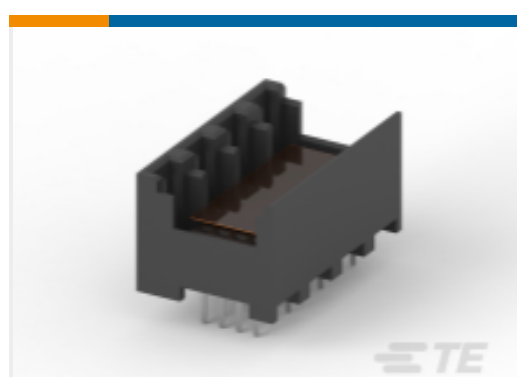
TE Part #1473226-1
SOCKET WITH RING MINI U-M-N-L



TE Part #2-1586038-2
22P VRT HDR VAL-U-LOK V0



TE Part #2229093-1
MOD JACK ASSEMBLY V-TYPE H=21.
7mm



TE Part #2309223-1
RITS CONN.HDR ASSY 4ROW 4P THR
W TAPE



TE Part #ASA021N00210235000
623 PLUG

Documents

Product Drawings

D-Sub 15P, RCPT, R/A, Dip

English

CAD Files

Customer View Model

[ENG_CVM_1-1734344-2_B.3d_igs.zip](#)

English

Customer View Model

[ENG_CVM_1-1734344-2_B.3d_stp.zip](#)

English

Customer View Model

[ENG_CVM_1-1734344-2_B.2d_dxf.zip](#)

English

3D PDF



3D

By downloading the CAD file I accept and agree to the [Terms and Conditions](#) of use.

Product Specifications

[Application Specification](#)

English

Product Environmental Compliance

[TE Material Declaration](#)

English